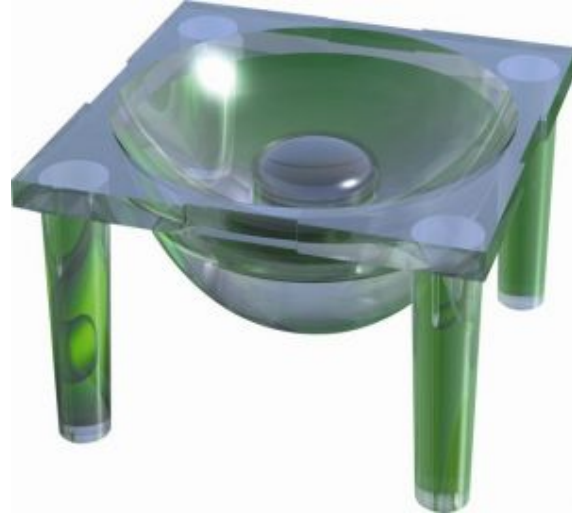



**10.0MM PLAIN TIGHT TIR**

**Status** Production  
**Part no.** 10412  
**Drawing no.** 60483  
**Product type** Optic  
**Type** TIR  
**Pieces** 1  
**Diameter** 10.0  
**Height** 6.00  
**Beam** Plain Tight  
**Flange** Yes  
**Files** Customer drawing (PDF)  
 Customer 3D model (.igs)



LEDs & Performances	Eff.	FWHM	Cd/lm	Spot	Cross-section	Files
Lumileds Rebel Cool White	89.6%	18.4	6.5			10412_Rebel_White_250408.ies
Lumileds Rebel Neutral White	84.0%	17.8	7.9			10412_Rebel_Neutral_White_250408.ies
Lumileds Rebel Warm White	87.6%	16.5	9.3			10412_Rebel_Warm_White_250408.ies
Cree XP-E XLamp® White	91.8%	16.5	9.3			10412_cree_xpe_white_250408.ies
Cree XP-G XLamp® White	91.0%	24	4.6			10412_cree_xpg_white_250408.ies
Osram Oslon SSL Oslon Ultra White	89.2%	18.8	8.0			10412_Oslon_wht_250408.ltd 10412_Oslon_wht_250408.ies
Nichia NCSL 119-H3 Top Emitting Warm White	84.6%	16.2	7.5			10412_Nichia_119_Warm_White_250408.ies
SSC Z5 Cool White	86.5%	16.1	11.3			10412_Seoul_Z5_white_250408.ies
Everlight Shuen Warm White	87.5%	21.8	4.8			10412_Shuen_wwht_250408.ies
Everlight Shuen Cool White	86.2%	20.9	4.6			10412_Shuen_cwht_250408.ies
Lumileds C Luxeon Cool White	85.9%	14.2	12.6			10412_Luxeon_C_white_250408.ies

Carclo Technical Plastics 111 Buckingham Ave, Slough, Berkshire, SL1 4PF ENGLAND  
 Tel: +44 (0)1753 575011 Fax: +44 (0)1753 811359

Lumileds ES Rebel Cool White	88.3%	23.5	4.6			10412_Luxeon_Rebel_ES_cool_white_040311.ies
------------------------------	-------	------	-----	---	--	---

Carclo Technical Plastics endeavours to continuously improve and renew its products; for this reason the technical data and contents of this catalogue may undergo variations without prior notice. For correct and up to date information, Carclo suggest using the Opticselect tool on our website <http://www.carclo-optics.com>.  
Copyright © Carclo 2010

#### Handling instructions

- Do not handle or install lenses without wearing gloves, skin oils may damage the lens or the light transmission.
- Clean lenses with a mild soap and water and dry with a clean soft cloth.
- Do not use any commercial solvents on lenses.
- Mount holders with low Odour epoxy's and allow time for them to out gas to stop lenses fogging.

Please note that flow lines, weld lines, surface scratches and small black or white inclusions within the lenses are acceptable if the optical performance of the lens is within the specification described to +/-10%. FWHM-Full (beam) Width as measured at one Half of Maximum intensity, information shown in the catalogue are based on our laboratory's tests.

All rights reserved. No part of this publication may be copied, reproduced in any form or by any means, electronic, mechanical, photocopying, recording or otherwise, illustrations not to be removed, without our prior permission. Carclo Technical Plastics reserves the right to make changes at any time in order to supply the best products possible.

