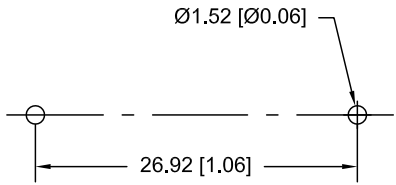
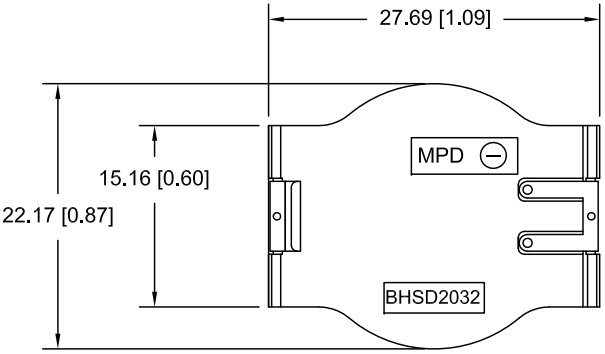
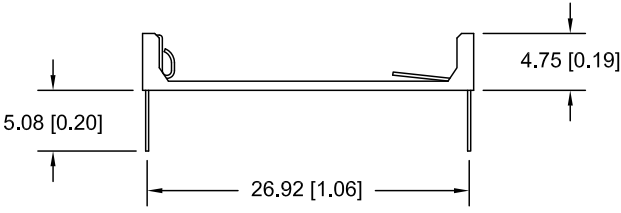


Date	SYM	REVISION RECORD	AUTH	DR.	CK.




PCB LAYOUT



SPECIFICATIONS:

- * Material- LCP Zenite 6130, color white
- * Contacts : Phosphor Bronze C5191, Gold flash, 1u - 3u thickness
- * ROHS COMPLIANT

Tolerance (Inches)	 Memory Protection Devices, Inc 200 Broad Hollow Road, Farmingdale, New York 11735		
Decimal ±.5 (.020)		Scale	Drawn By B.S.
Fractional ± .8 (.030)	Title	BASE, CR2032 THROUGH HOLE BATTERY	
Angular ± 3°	Date 01/28/11	Drawing Number BHSD-2032-PC	
		Approved By T.B.	