

REMARKS : 1) * ----- REFER TO COVER PAGE

2) ** ----- X.XX ≡ 2.54 (FOR PIN LENGTH ≥ 3.20 & ≤ 10.00mm.)
 ** ----- X.XX ≡ 1.75 (FOR PIN LENGTH > 10.00 & ≤ 19.50mm.)

| | | | | | |
|-------------------|-----------|----------------------------|---|----------------------------------|------------|
| VARITRONIX LTD. | | TOL : 40:15 IF NOT SPECIFY | | 3 rd ANGLE PROJECTION | |
| Dimension : mm | | DD NOT SCALE DRAWING | | | |
| DWGNO : | VI-508-DP | REV : | 0 | Drawn by : | PQJN |
| Checked by : ERIC | | SIGN : | | Date : | 2001-05-17 |

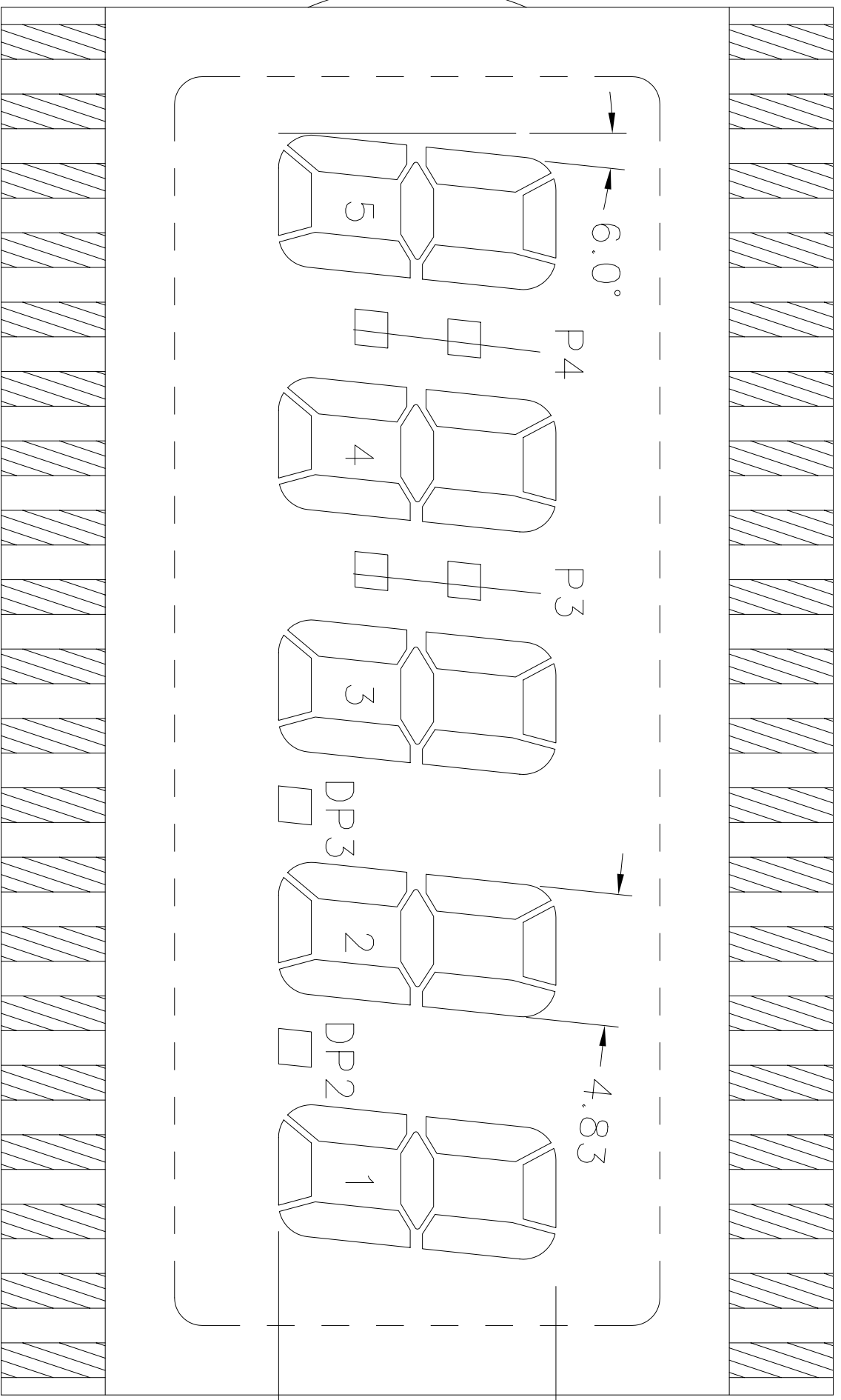
DWG.NO. : VI-508-DP (REV.0)

PIN40

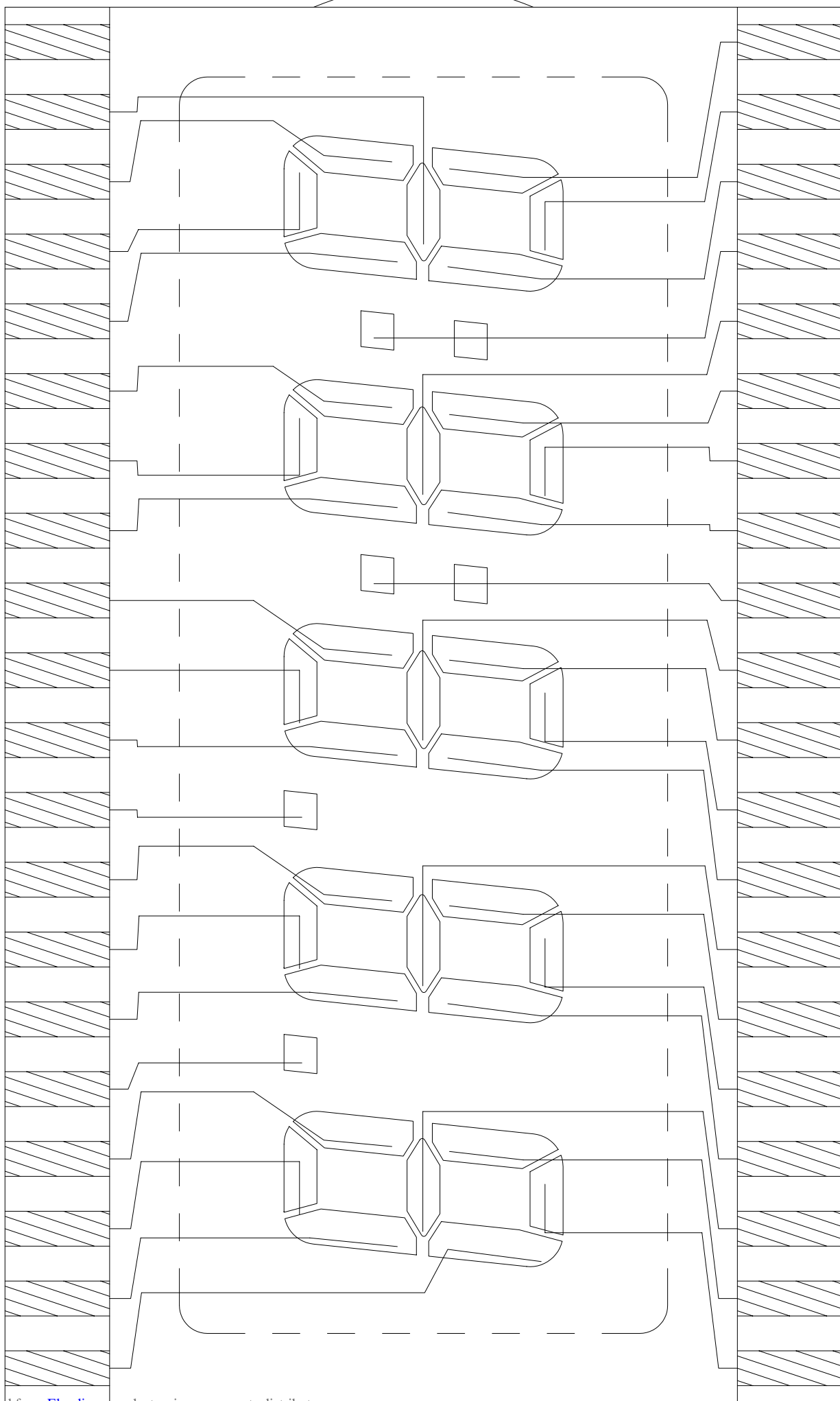
PIN21

PIN1

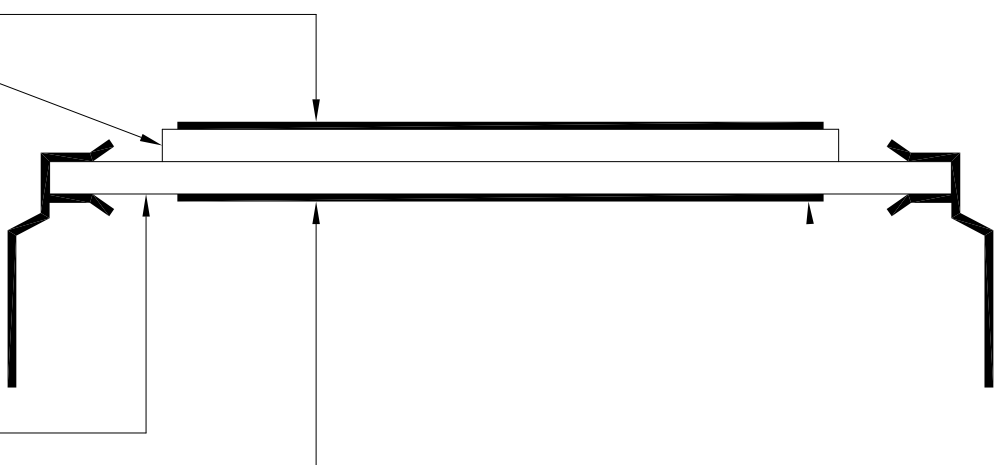
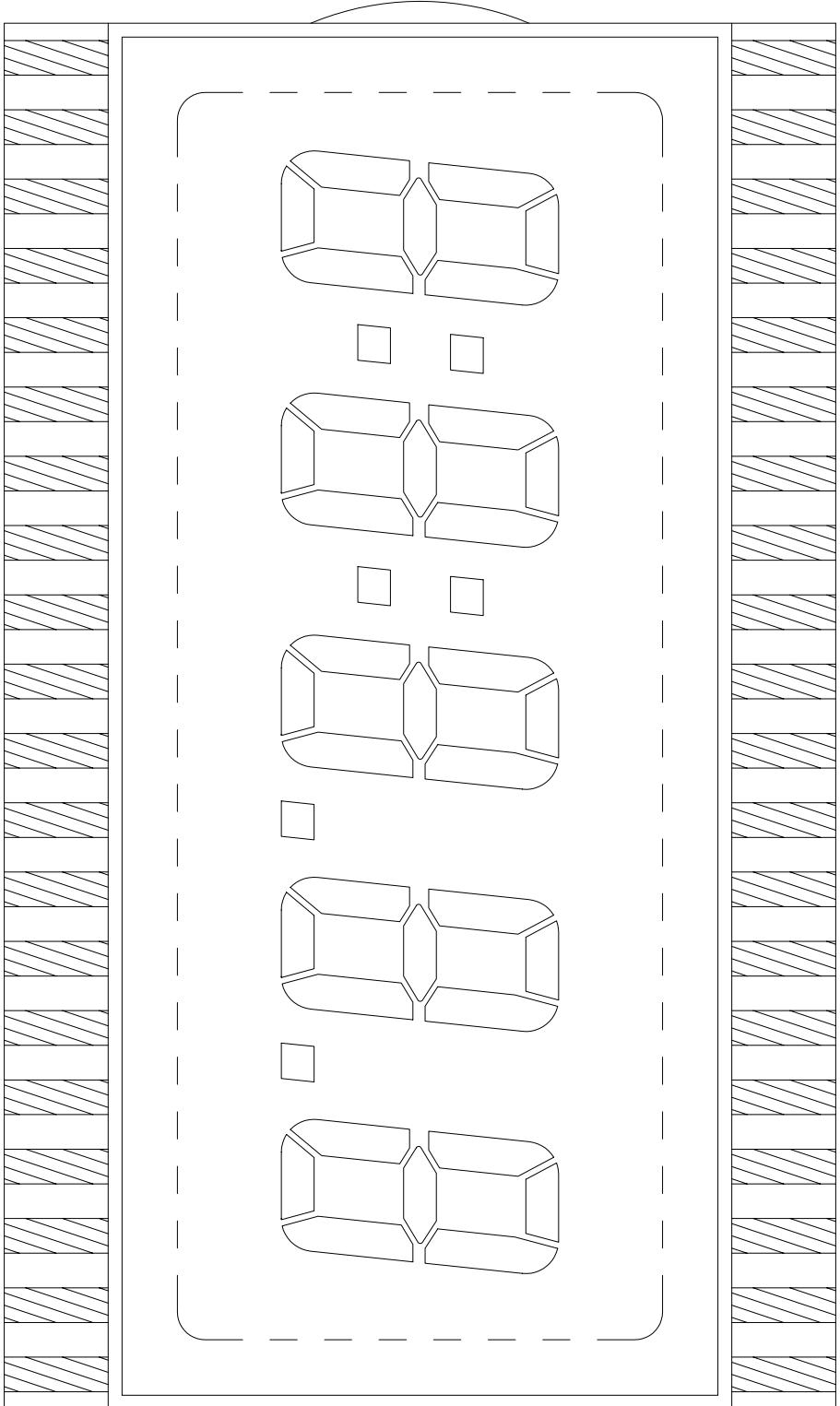
PIN20



DWG.NO. : VI-508-DP (REV.0)
SEGMENT TRACKING



DWG.NO. : VI-508-DP (REV.0)



FRONT POLARIZER
FRONT GLASS
BACK GLASS
BACK POLARIZER

DWG.NO. : VI-508-DP (REV.0)

| PIN | SEG | PIN | SEG |
|-----|-----|-----|-----|
| 1 | COM | 21 | 1A |
| 2 | 5G | 22 | 1F |
| 3 | 5E | 23 | 1G |
| 4 | 5D | 24 | 2B |
| 5 | 5C | 25 | 2A |
| 6 | 4E | 26 | 2F |
| 7 | 4D | 27 | 2G |
| 8 | 4C | 28 | 3B |
| 9 | 3E | 29 | 3A |
| 10 | 3D | 30 | 3F |
| 11 | 3C | 31 | 3G |
| 12 | DP3 | 32 | P3 |
| 13 | 2E | 33 | 4B |
| 14 | 2D | 34 | 4A |
| 15 | 2C | 35 | 4F |
| 16 | DP2 | 36 | 4G |
| 17 | 1E | 37 | P4 |
| 18 | 1D | 38 | 5B |
| 19 | 1C | 39 | 5A |
| 20 | 1B | 40 | 5F |