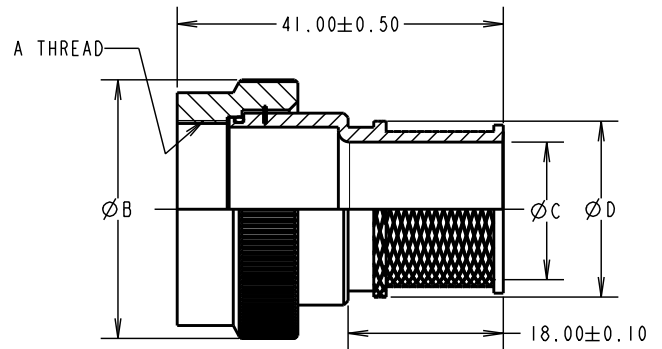


# Customer Information Sheet

DRAWING No.: C90-00X-XXXX      IF IN DOUBT - ASK      ©      NOT TO SCALE      THIRD ANGLE PROJECTION      ALL DIMENSIONS IN mm

**SPECIFICATIONS:**

**MATERIAL:**  
 SHELL: ALUMINIUM ALLOY  
 O-RING: SILICONE  
**FINISH:**  
 SHELL: 5-12µ ZINC NICKEL BLACK PASSIVATE OVER 8-12µ NICKEL



**NOTES:**

1. USE 'BAND-IT' TIE DEX MICRO BAND TOOL FOR BAND CRIMPING.
2. TOLERANCES ARE ±0.10 UNLESS OTHERWISE STATED.
3. FOR SPRING ADAPTOR ASSEMBLY INSTRUCTIONS SEE IS-31.

SHELL SIZE	A THREAD	B MAX	C MAX	D MAX
10SL	5/8-24UNEF	23.00	7.92	15.56
12S	11/16-24UNEF	26.00	7.92	15.56
14S	3/4-20UNEF	30.50	11.12	18.76

ORDER CODE: **C90-00X-XXXX**

TERMINATION STYLE: \_\_\_\_\_

1 = BAND  
 2 = SPRING

SHELL SIZE = 10SL, 12S, 14S

SM	4	16.09.10	10940
NAME	ISS.	DATE	C/NOTE
APPROVED: S. MCCULLAGH			
CHECKED:		R. ADDE	
DRAWN:		R. ADDE	
CUSTOMER REF.:			
ASSEMBLY DRG:			



<b>HARWIN USA</b> TEL: 603 893 5376 FAX: 603 893 5396 mis@harwin.com	<b>HARWIN Europe (UK)</b> TEL: 023 9231 4545 FAX: 023 9231 4590 mis@harwin.co.uk	<b>HARWIN Asia</b> TEL: +65 6 779 4909 FAX: +65 6 779 3868 mis@harwin.com.sg
---	---	---

THIS DRAWING AND ANY INFORMATION OR DESCRIPTIVE MATTER SET OUT HEREON ARE CONFIDENTIAL AND COPYRIGHT PROPERTY OF THE HARWIN GROUP AND MUST NOT BE DISCLOSED, LOANED, COPIED OR USED FOR MANUFACTURING, TENDERING OR FOR ANY OTHER PURPOSE WITHOUT THEIR WRITTEN PERMISSION.

**TOLERANCES**  
 X = ±1mm  
 X.X = ±0.25mm  
 X.XX = ±0.10mm  
 X.XXX = ±0.01mm  
 ANGLES = ±5°  
 UNLESS STATED

**MATERIAL:**  
 SEE ABOVE

**FINISH:**  
 SEE ABOVE

**S/AREA:** mm<sup>2</sup>

**TITLE:**  
 SCREENING BRAID ADAPTOR

**DRAWING NUMBER:**  
**C90-00X-XXXX**

SHT 2 OF 2