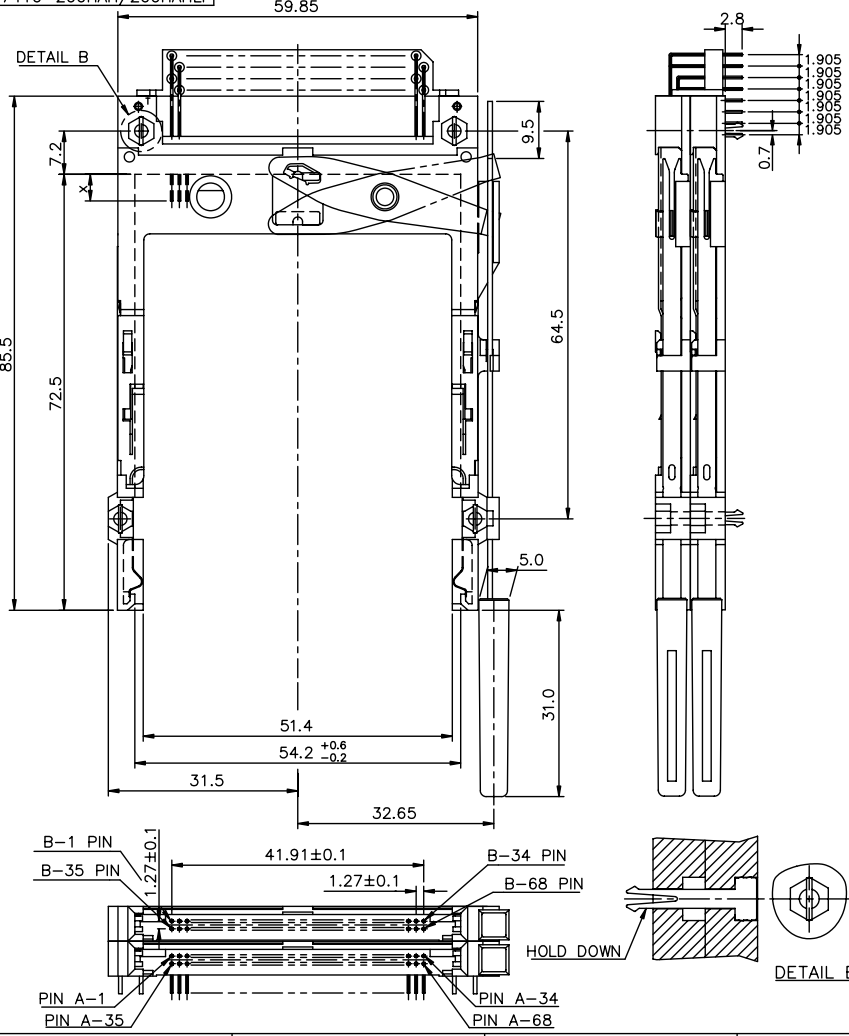


Tous droits attribution réservés. Reproduction ou communication à des tiers sans autorisation écrite du propriétaire. Copyright BERG ELECTRONICS S.A. Droits de reproduction BERG ELECTRONICS S.A.

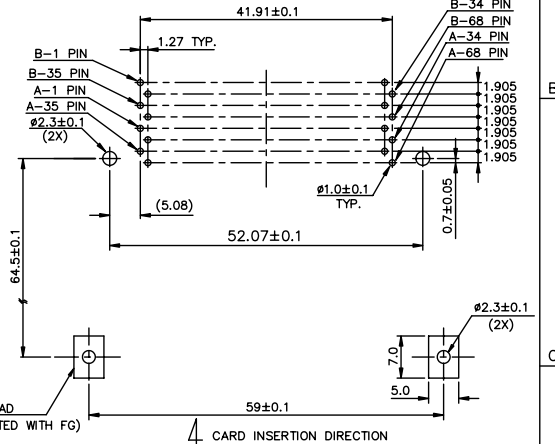
All rights strictly reserved. Reproduction or issue to third parties in any form without the written authority from the proprietor. Copyright BERG ELECTRONICS S.A.

PRODUCT NO.  
57410-200HAH/200HAHLF



- NOTES:
- EJECT FORCE : 3.5 Kg MAX.
  - EJECT TRAVEL: 8.0mm
  - MATERIAL
    - 3.1 HEADER ASS'Y :
      - PLASTIC : HOUSING ...LCP UL94V-0 NATURAL
      - LOCATOR ...G.F. 6/6 NYLON UL94-V0 BLACK
    - 3.2 EJECT MECHANISM ASS'Y :
      - PLASTIC : GUIDE: POLYPHTHARAMID UL94V-0 BLACK
      - PUSH BUTTON: POLYPHTHARAMID UL94V-0 BLACK
      - PLATE : STAINLESS
      - EMI CONTACT: PHOSPHOR BRONZE
    - 4. FINISH (PIN)
      - UNDER PLATING : 0.5µm MIN. Ni
      - CONTACT AREA : 0.1µm MIN. GOLD OVER 0.5µm MIN. Pd-Ni
      - SOLDER TAIL : 2.5µm MIN. Sn-Pb
      - 5. DIM "X" : 2.5µm MIN. PURE Sn ( FOR \*\*\*\*\*LF )

4.25±0.1	3.5±0.1	5.0±0.1
OTHERS	36,67	1,17,34,35,51,68

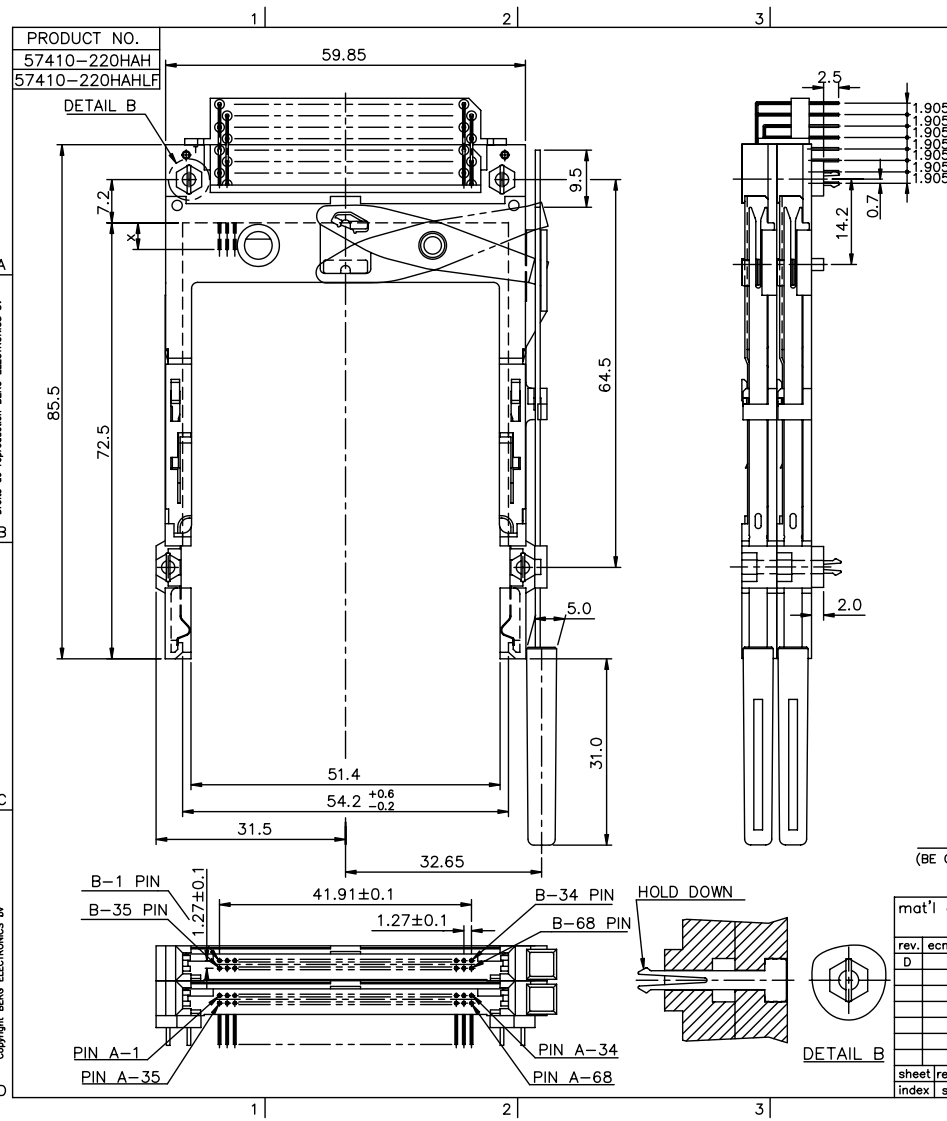


mat'l code		tolerance unless otherwise specified	CUSTOMER COPY	 www.fciconnect.com	title DOUBLE DECK R/A EJECTOR TYPE 1/2/3	product family PCMCIA	code 57410
rev.	ecn no.	dr	date				
A	T10082	WL	03/18/01	linear	±0.30	projection	size
B	T10348	WL	12/05/01	angles	± 2°	projection	size
C	T20166	WL	05/30/02	angles	± 2°	projection	size
D	N05-0204	WB	07/12/08	dr	WENDY CHEN 03/14/01	unit	mm/inch
				enqr	MINERVA WANG 03/14/01	scale	1.5:1
				chr	JOSEPH HSIA 03/14/01	scale	1.5:1
				appd	JOSEPH HSIA 03/14/01	scale	1.5:1
sheet	revision	D	D				
index	sheet	1	2				

PDM: Rev:D STATUS: Released Printed: Oct 12, 2010

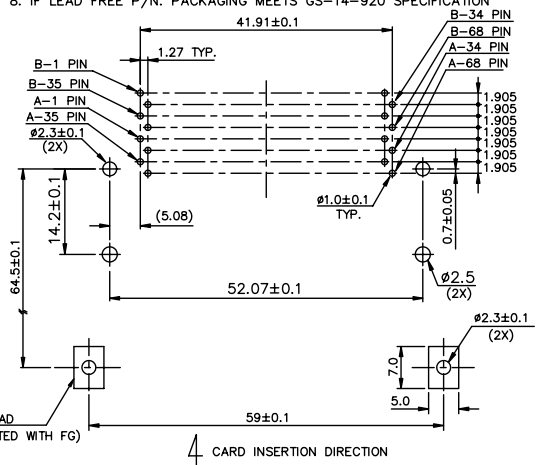
Tous droits attachement réservés. Reproduction ou communication à des tiers sans autorisation écrite du propriétaire. FCI ELECTRONICS. Droits de reproduction BERG ELECTRONICS bv

All rights strictly reserved. Reproduction or issue to third parties in any form without the written authority from the proprietor. FCI ELECTRONICS. Copyright BERG ELECTRONICS bv



- NOTES:
- EJECT FORCE : 3.5 Kg MAX.
  - EJECT TRAVEL: 8.0mm
  - MATERIAL
  - HEADER ASS'Y :  
PLASTIC : HOUSING ...LCP UL94V-0 NATURAL  
LOCATOR ...G.F. 6/6 NYLON UL94-V0 BLACK
  - PIN : COPPER ALLOY
  - EJECT MECHANISM ASS'Y :  
PLASTIC : GUIDE: POLYPHTHARAMID UL94V-0 BLACK  
PUSH BUTTON: POLYPHTHARAMID UL94V-0 BLACK
  - PLATE : STAINLESS  
EMI CONTACT: PHOSPHOR BRONZE
  - FINISH (PIN)  
UNDER PLATING : 0.5µm MIN. Ni  
CONTACT AREA : 0.1µm MIN. GOLD OVER 0.5µm MIN. Pd-Ni  
SOLDER TAIL : 2.5µm MIN. Sn-Pb  
OTHERS : 2.5µm MIN. PURE Sn ( FOR -\*\*\*\*\*LF )

4.25±0.1	3.5±0.1	5.0±0.1
OTHERS	36,67	1,17,34,35,51,68



mat'l code		tolerance unless otherwise specified		CUSTOMER COPY		FCI		www.fciconnect.com	
rev.	ecn no.	dr	date	linear	±0.30	projection	title		
D				angles	± 2°	↑	DOUBLE DECK R/A EJECTOR TYPE 1/2/3		
				dr	WENDY CHEN 12/05/01	unit	product family		code
				enqr	MINERVA WANG 12/05/01	mm/inch	PCMCIA		
				chr	YUEN CHU 12/05/01	scale	size		sheet
				appd	JENN TSAO 12/05/01	1.5:1	A3		2 of
sheet	revision								
index	sheet								