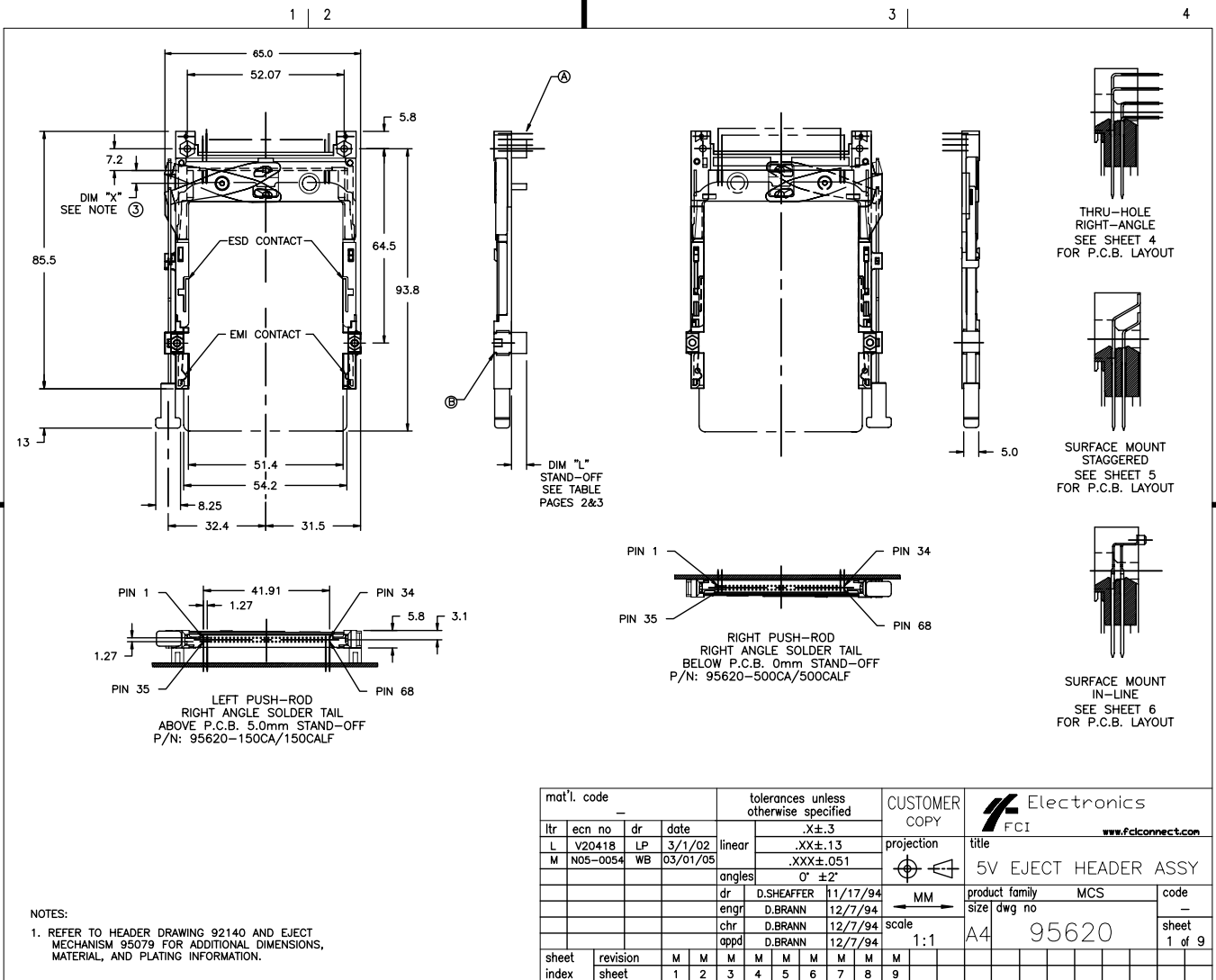


Tous droits strictement réservés. Reproduction ou communication à des tiers  
interdite sous quelque forme que ce soit sans autorisation écrite du propriétaire.  
Propriété de c FCI. Droits de reproduction FCI.

All rights strictly reserved. Reproduction or issue to third parties in any  
form whatever is not permitted without written authority from the proprietor.  
Property of FCI. Copyright FCI.

FCI



1 2

ACAD

PDM: Rev:M

STATUS Released 2.6 Printed: Oct 12, 2014

DESCRIPTION: ABOVE P.C.B., DECK AND PUSH-ROD LOCATION ARE AS VIEWED BY USER.

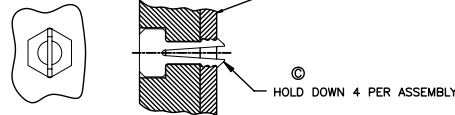
PRODUCT NO. 95620-XXXXX	PUSH ROD LOCATION	SOLDER TAIL ⑤	STAND-OFF HEIGHT DIM "L"	EJ. HEADER ASSY 92140-XXX ④	EJ. MECHANISM ASSY 95079-XXXX ⑥	SOLDERABLE HOLD DOWN (4) ③	MOUNTING STYLE TO PCB AND PUSH-ROD LOCATION	USED WITH/COMMENTS
000CA	RIGHT	R/A	0.0	000	00CA			
000CAH ⑦	RIGHT	R/A	0.0	000	00CA	93925-001		
001CA	RIGHT	SMT-STG	0.0	001	00CA			
002CA	RIGHT	SMT-IL	0.0	002	00CA			
020CA	RIGHT	R/A	2.0	040	02CA			
040CA	RIGHT	R/A	4.0	010	04CA			
050CA	RIGHT	R/A	5.0	020	05CA			
050CAH ⑦	RIGHT	R/A	5.0	020	05CA	93925-004		
100CA	LEFT	R/A	0.0	000	10CA			
100CAH ⑦	LEFT	R/A	0.0	000	10CA	93925-001		
101CA	LEFT	SMT-STG	0.0	001	10CA			
102CA	LEFT	SMT-IL	0.0	002	10CA			
120CA	LEFT	R/A	2.0	040	12CA			
140CA	LEFT	R/A	4.0	010	14CA			
150CA	LEFT	R/A	5.0	020	15CA			
005CA	RIGHT	R/A	0.0	005	00CA			95620-000CA or -100CA
025CA	RIGHT	R/A	0.0	045	00CA			95620-020CA or -120CA
105CA	LEFT	R/A	0.0	005	10CA			95620-000CA or -100CA
125CA	LEFT	R/A	0.0	045	10CA			95620-020CA or -120CA

- 6 BOARD KEEP OUT ZONE- PAGE 9
- ⑦ SOLDERABLE HOLD DOWN

NOTES:

- MATERIAL:
  - 1.1 HEADER ASSY:
    - PLASTIC HOUSING: LCP UL94V-0 BLACK - ABOVE PCB
    - LCP UL94V-0 NATURAL (WHITE) - BELOW PCB
    - PIN: PHOSPHOR BRONZE
  - 1.2 EJECT MECHANISM ASSY:
    - PLASTIC GUIDE: POLYPHTHARAMID UL94V-0 BLACK
    - PLASTIC PUSH-ROD BUTTON: POLYPHTHARAMID UL94V-0 BLACK
    - COVER PLATE, EJECT PLATE, LINK ARM,
    - PUSH ROD: STAINLESS STEEL
    - EMI CONTACT: PHOSPHOR BRONZE
- FINISH (PIN)
  - UNDER PLATING: 0.5um Ni
  - CONTACT AREA: 0.1um GOLD OVER
  - 0.5um Pd-Ni
  - SOLDER TAIL: 2.5um Sn-Pb
- DIM "X"
 

4.25±.1	3.5±.1	5.0±.1
OTHERS	36,67	1,17,34,35,51,68
- RECOMMENDED HOLD DOWN - 2mm SCREWS (95121-XXX)AND HEXNUTS (92869-001). RECOMMENDED SCREW TORQUE: 1.0 TO 1.5 MAX in-lbs. (1.2-1.7 cm-kgs).
- SOLDER TAIL KEY/PCB LAYOUT:
  - R/A = RIGHT ANGLE PIN-THROUGH-HOLE-PAGE 6
  - SMT-STG = STAGGERED SURFACE MOUNT-PAGE 7
  - SMT-IL = SURFACE MOUNT IN-LINE (SINGLE ROW)-PAGE 8



mat'l. code		tolerances unless otherwise specified		CUSTOMER COPY		Electronics FCI www.fciconnect.com	
ltr	ecn no	dr	date	linear	.X±.3	projection	title
M				linear	.XX±.13		5V EJECT HEADER ASSY
				angles	.XXX±.051		
				dr	G.CLEMENS 12/20/99	MM	code
				enrg	D.BRANN 12/20/99	size	dwg no
				chr	D.BRANN 12/20/99	scale	1:1
				appd	D.BRANN 12/20/99	A4	95620
sheet	revision						sheet
index	sheet						2 of

Tous droits strictement reserves. Reproduction ou communication a des tiers interdite sous quelque forme que ce soit sans autorisation ecrite du proprietaire. Propriete de c FCI. Droits de reproduction FCI.

All rights strictly reserved. Reproduction or issue to third parties in any form whatever is not permitted without written authority from the Proprietor. Property of FCI. Copyright FCI.

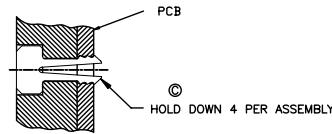
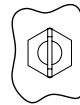
DESCRIPTION: ABOVE P.C.B., DECK AND PUSH-ROD LOCATION ARE AS VIEWED BY USER.

PRODUCT NO. 95620-XXXXX	PUSH ROD LOCATION	SOLDER TAIL (5)	STAND-OFF HEIGHT DIM "L"	EJ. HEADER ASSY 92140-XXX (A)	EJ. MECHANISM ASSY 95079-XXXX (B)	SOLDERABLE HOLD DOWN (4) (C)	MOUNTING STYLE TO PCB AND PUSH-ROD LOCATION	USED WITH/COMMENTS
000CALF	RIGHT	R/A	0.0	000LF	00CA			
000CAHLF (1)	RIGHT	R/A	0.0	000LF	00CA	93925-001		
001CALF	RIGHT	SMT-STG	0.0	001LF	00CA			
002CALF	RIGHT	SMT-IL	0.0	002LF	00CA			
020CALF	RIGHT	R/A	2.0	040LF	02CA			
040CALF	RIGHT	R/A	4.0	010LF	04CA			
050CALF	RIGHT	R/A	5.0	020LF	05CA			
050CAHLF (1)	RIGHT	R/A	5.0	020LF	05CA	93925-004		
100CALF	LEFT	R/A	0.0	000LF	10CA			
100CAHLF (1)	LEFT	R/A	0.0	000LF	10CA	93925-001		
101CALF	LEFT	SMT-STG	0.0	001LF	10CA			
102CALF	LEFT	SMT-IL	0.0	002LF	10CA			
120CALF	LEFT	R/A	2.0	040LF	12CA			
140CALF	LEFT	R/A	4.0	010LF	14CA			
150CALF	LEFT	R/A	5.0	020LF	15CA			
005CALF	RIGHT	R/A	0.0	005LF	00CA			95620-000CALF or -100CALF
025CALF	RIGHT	R/A	0.0	045LF	00CA			95620-020CALF or -120CALF
105CALF	LEFT	R/A	0.0	005LF	10CA			95620-000CALF or -100CALF
125CALF	LEFT	R/A	0.0	045LF	10CA			95620-020CALF or -120CALF

NOTES:

- MATERIAL:
  - HEADER ASSY:
    - PLASTIC HOUSING: LCP UL94V-0 BLACK - ABOVE PCB
    - LCP UL94V-0 NATURAL (WHITE) - BELOW PCB
    - PIN: PHOSPHOR BRONZE
  - EJECT MECHANISM ASSY:
    - PLASTIC GUIDE: POLYPHTHARAMID UL94V-0 BLACK
    - PLASTIC PUSH-ROD BUTTON: POLYPHTHARAMID UL94V-0 BLACK
    - COVER PLATE, EJECT PLATE, LINK ARM, PUSH ROD: STAINLESS STEEL
    - EMI CONTACT: PHOSPHOR BRONZE
- FINISH (PIN)
  - UNDER PLATING: 0.5um Ni
  - CONTACT AREA: 0.1um GOLD OVER
  - SOLDER TAIL: 0.5um Pd-Ni
  - 2.5um Sn-Pb
- RECOMMENDED HOLD DOWN - 2mm SCREWS (95121-XXX)AND HEXNUTS (92869-001). RECOMMENDED SCREW TORQUE: 1.0 TO 1.5 MAX in-lbs. (1.2-1.7 cm-kgs).
- SOLDER TAIL KEY/PCB LAYOUT:
  - R/A = RIGHT ANGLE PIN-THROUGH-HOLE-PAGE 6
  - SMT-STG = STAGGERED SURFACE MOUNT-PAGE 7
  - SMT-IL = SURFACE MOUNT IN-LINE (SINGLE ROW)-PAGE 8
- IF LEAD FREE P/N, THE HOUSING WILL WITHSTAND EXPOSURE TO 260°C PEAK TEMPERATURE
- IF LEAD FREE P/N, THE PRODUCT MEETS EUROPEAN UNION DIRECTIVES AND OTHER COUNTRY REGULATIONS AS DESCRIBED IN GS-22-008
- IF LEAD FREE P/N, THE PRODUCT MEETS GS-14-920 SPECIFICATION

- BOARD KEEP OUT ZONE- PAGE 9
- SOLDERABLE HOLD DOWN



4.25±.1	3.5±.1	5.0±.1
OTHERS	36.67	1,17,34,35,51,68

mat'l. code		tolerances unless otherwise specified		CUSTOMER COPY		Electronics FCI www.fciconnect.com		
ltr	ecn no	dr	date	linear	.X±.3	projection	title	
M					.XX±.13		5V EJECT HEADER ASSY	
				angles	.XXX±.051		product family	MCS
				dr	G.CLEMENS 12/20/99	MM	size	dwg no
				enrg	D.BRANN 12/20/99	1:1	A4	95620
				chr	D.BRANN 12/20/99	scale	3 of	
				appd	D.BRANN 12/20/99			
sheet index	revision sheet						cage code	

Tous droits strictement reserves. Reproduction ou communication a des tiers interdite sous quelque forme que ce soit sans autorisation ecrite du proprietaire. Propriete de c FCI. Droits de reproduction FCI.

All rights strictly reserved. Reproduction or issue to third parties in any form whatever is not permitted without written authority from the Proprietor. Property of FCI. Copyright FCI.

DESCRIPTION: BELOW P.C.B., DECK AND PUSH-ROD LOCATION ARE AS VIEWED BY USER.

PRODUCT NO. 95620-XXXXX	PUSH ROD LOCATION	SOLDER TAIL ⑤	STAND-OFF HEIGHT DIM "L"	EJ. HEADER ASSY 92140-XXX ①	EJ. MECHANISM ASSY 95079-XXXX ②	SOLDERABLE HOLD DOWN (4) ③	MOUNTING STYLE TO PCB AND PUSH-ROD LOCATION	USED WITH/COMMENTS
500CA	RIGHT	R/A	0.0	500	10CA			
500CAH	RIGHT	R/A	0.0	500	10CA	93925-001		
501CA	RIGHT	SMT-STG	0.0	501	10CA			
502CA	RIGHT	SMT-IL	0.0	502	10CA			
503CA	RIGHT	SMT-IL	0.0	503	10CA			
520CA	RIGHT	R/A	2.0	540	12CA			NO BOARD LOCATORS
540CA	RIGHT	R/A	4.0	510	14CA			
550CA	RIGHT	R/A	5.0	520	15CA			
600CA	LEFT	R/A	0.0	500	00CA			
601CA	LEFT	SMT-STG	0.0	501	00CA			
602CA	LEFT	SMT-IL	0.0	502	00CA			
620CA	LEFT	R/A	2.0	540	02CA			
640CA	LEFT	R/A	4.0	510	04CA			
650CA	LEFT	R/A	5.0	520	05CA			
505CA	RIGHT	R/A	0.0	505	10CA			95620-500CA or -600CA
525CA	RIGHT	R/A	0.0	545	10CA			95620-520CA or -620CA
605CA	LEFT	R/A	0.0	505	00CA			95620-500CA or -600CA
625CA	LEFT	R/A	0.0	545	00CA			95620-520CA or -620CA

NOTES:

- MATERIAL:
  - HEADER ASSY:
    - PLASTIC HOUSING: LCP UL94V-0 BLACK - ABOVE PCB
    - LCP UL94V-0 NATURAL (WHITE) - BELOW PCB
    - PIN: PHOSPHOR BRONZE
  - EJECT MECHANISM ASSY:
    - PLASTIC GUIDE: POLYPHTHARAMID UL94V-0 BLACK
    - PLASTIC PUSH-ROD BUTTON: POLYPHTHARAMID UL94V-0 BLACK
    - COVER PLATE, EJECT PLATE, LINK ARM, PUSH ROD: STAINLESS STEEL
    - EMI CONTACT: PHOSPHOR BRONZE
- FINISH (PIN)
  - UNDER PLATING: 0.5um Ni
  - CONTACT AREA: 0.1um GOLD OVER
  - 0.5um Pd-Ni
  - 2.5um Sn-Pb
- DIM "X"
 

4.25±.1	3.5±.1	5.0±.1
OTHERS 36,67	1,17,34,35,51,88	
- RECOMMENDED HOLD DOWN - 2mm SCREWS (95121-XXX) AND HEXNUTS (92869-001). RECOMMENDED SCREW TORQUE: 1.0 TO 1.5 MAX in-lbs. (1.2-1.7 cm-kgs).
- SOLDER TAIL KEY/PCB LAYOUT:
  - R/A = RIGHT ANGLE PIN-THROUGH-HOLE-PAGE 6
  - SMT-STG = STAGGERED SURFACE MOUNT-PAGE 7
  - SMT-IL = SURFACE MOUNT IN-LINE (SINGLE ROW)-PAGE 8
- BOARD KEEP OUT ZONE-PAGE 9

mat'l. code		tolerances unless otherwise specified		CUSTOMER COPY		 www.fciconnect.com	
ltr	ecn no	dr	date	linear	.X±.3	projection	title
M				angles	.XX±.13	 MM	5V EJECT HEADER ASSY
				dr	.XXX±.051		product family
				enrg	0' ±2'	size	dwg no
				chr		scale	95620
				appd		1:1	sheet 4 of
sheet index	revision sheet						

Tous droits strictement reserves. Reproduction ou communication a des tiers interdite sous quelque forme que ce soit sans autorisation ecrite du propriétaire. Propriete de c FCI. Droits de reproduction FCI.

All rights strictly reserved. Reproduction or issue to third parties in any form whatever is not permitted without written authority from the proprietor. Property of FCI. Copyright FCI.

DESCRIPTION: BELOW P.C.B., DECK AND PUSH-ROD LOCATION ARE AS VIEWED BY USER.

PRODUCT NO. 95620-XXXXX	PUSH ROD LOCATION	SOLDER TAIL ⑤	STAND-OFF HEIGHT DIM "L"	EJ. HEADER ASSY 92140-XXX ①	EJ. MECHANISM ASSY 95079-XXXX ②	SOLDERABLE HOLD DOWN (4) ③	MOUNTING STYLE TO PCB AND PUSH-ROD LOCATION	USED WITH/COMMENTS
500CALF	RIGHT	R/A	0.0	500LF	10CA			
500CAHLF	RIGHT	R/A	0.0	500LF	10CA	93925-001		
501CALF	RIGHT	SMT-STG	0.0	501LF	10CA			
502CALF	RIGHT	SMT-IL	0.0	502LF	10CA			
503CALF	RIGHT	SMT-IL	0.0	503LF	10CA			
520CALF	RIGHT	R/A	2.0	540LF	12CA			NO BOARD LOCATORS
540CALF	RIGHT	R/A	4.0	510LF	14CA			
550CALF	RIGHT	R/A	5.0	520LF	15CA			
600CALF	LEFT	R/A	0.0	500LF	00CA			
601CALF	LEFT	SMT-STG	0.0	501LF	00CA			
602CALF	LEFT	SMT-IL	0.0	502LF	00CA			
620CALF	LEFT	R/A	2.0	540LF	02CA			
640CALF	LEFT	R/A	4.0	510LF	04CA			
650CALF	LEFT	R/A	5.0	520LF	05CA			
505CALF	RIGHT	R/A	0.0	505LF	10CA			95620-500CA or -600CA
525CALF	RIGHT	R/A	0.0	545LF	10CA			95620-520CA or -620CA
605CALF	LEFT	R/A	0.0	505LF	00CA			95620-500CA or -600CA
625CALF	LEFT	R/A	0.0	545LF	00CA			95620-520CA or -620CA

NOTES:

- MATERIAL:
  - 1.1 HEADER ASSY:  
PLASTIC HOUSING: LCP UL94V-0 BLACK - ABOVE PCB  
LCP UL94V-0 NATURAL (WHITE) - BELOW PCB  
PIN: PHOSPHOR BRONZE
  - 1.2 EJECT MECHANISM ASSY:  
PLASTIC GUIDE: POLYPHTHAMID UL94V-0 BLACK  
PLASTIC PUSH-ROD BUTTON: POLYPHTHAMID UL94V-0 BLACK  
COVER PLATE, EJECT PLATE, LINK ARM,  
PUSH ROD: STAINLESS STEEL  
EMI CONTACT: PHOSPHOR BRONZE
- FINISH (PIN)  
UNDER PLATING: 0.5um Ni  
CONTACT AREA: 0.1um GOLD OVER  
0.5um Pd-Ni  
SOLDER TAIL: 2.5um Sn-Pb

- IF LEAD FREE P/N. THE HOUSING WILL WITHSTAND EXPOSURE TO 260°C PEAK TEMPERATURE  
SOLDER TAIL : SMT-IL, SMT-STG CAN RESIST 40 SECONDS IN A CONVECTION,  
INFRA-RED OR VAPOR PHASE REFLOW OVEN.  
SOLDER TAIL : R/A CAN RESIST 10 SECONDS IN A WAVE SOLDER APPLICATION  
WITH A 1.00MM MINIMUM THICK CIRCUIT BOARD.
- IF LEAD FREE P/N. THE PRODUCT MEETS EUROPEAN UNION DIRECTIVES  
AND OTHER COUNTRY REGULATIONS AS DISCRIBLED IN GS-22-008
- LEAD FREE P/N PACKAGING MEETS GS-14-920 SPECIFICATION

⑤ DIM "X"

4.25±.1	3.5±.1	5.0±.1
OTHERS	36,67	1,17,34,35,51,88

- RECOMMENDED HOLD DOWN - 2mm SCREWS (95121-XXX) AND  
HEXNUTS (92869-001). RECOMMENDED SCREW TORQUE: 1.0 TO  
1.5 MAX in-lbs. (1.2-1.7 cm-kgs).

- SOLDER TAIL KEY/PCB LAYOUT:  
R/A = RIGHT ANGLE PIN-THROUGH-HOLE-PAGE 6  
SMT-STG = STAGGERED SURFACE MOUNT-PAGE 7  
SMT-IL = SURFACE MOUNT IN-LINE (SINGLE ROW)-PAGE 8

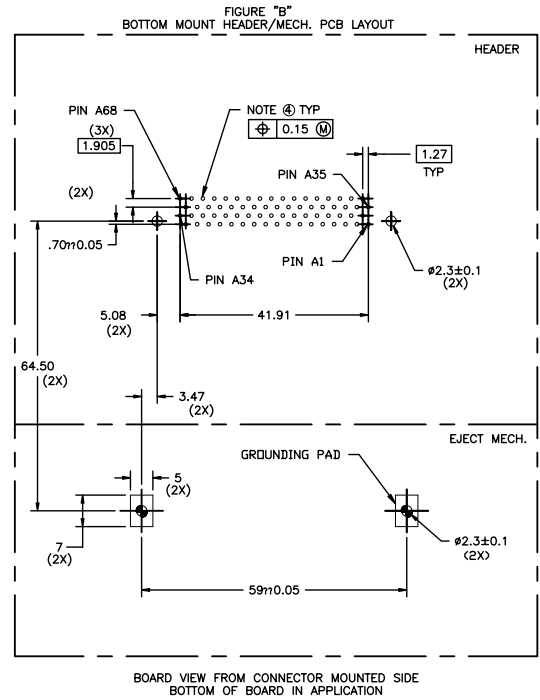
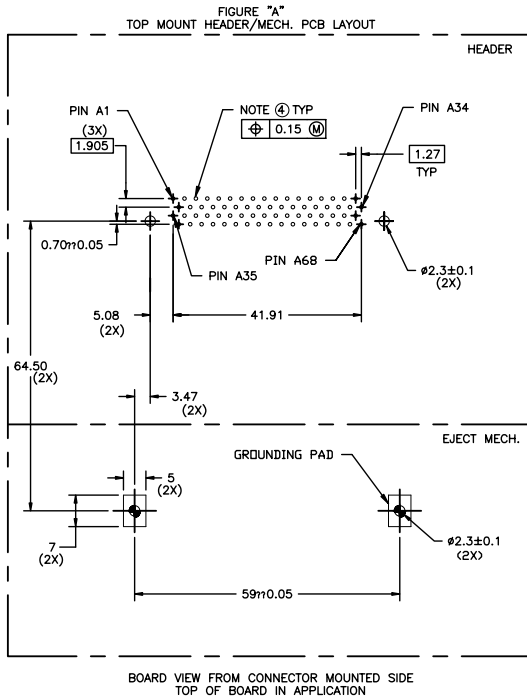
- BOARD KEEP OUT ZONE-PAGE 9

mat'l. code		tolerances unless otherwise specified		CUSTOMER COPY		Electronics FCI www.fciconnect.com	
ltr	ecn no	dr	date	linear	.X±.3	projection	title
M					.XX±.13		5V EJECT HEADER ASSY
				angles	.XXX±.051		product family
				dr	G.CLEMENS 12/20/99	MM	code
				enrg	D.BRANN 12/20/99	size	dwg no
				chr	D.BRANN 12/20/99	scale	95620
				appd	D.BRANN 12/20/99	1:1	sheet
sheet	revision						5 of
index	sheet						

Tous droits strictement reserves. Reproduction ou communication a des tiers interdite sous quelque forme que ce soit sans autorisation ecrite du proprietaire. Propriete de c FCI. Droits de reproduction FCI.

All rights strictly reserved. Reproduction or issue to third parties in any form whatever is not permitted without written authority from the Proprietor. Property of FCI. Copyright FCI.

### Single Mount Right Angle



NOTES:

- 1 ALL TOLERANCES  $\pm 0.15$  UNLESS NOTED.
- 2 KEEP-OUT ZONE FOR HEADERS W/ STAND-OFF OPTIONS SEE SHEET 9 FIGURE A.
- 3 KEEP-OUT ZONE FOR HEADERS W/O STAND-OFF OPTIONS SEE SHEET 9 FIGURE B.
- ④ RECOMMENDED DIAMETER IS  $\phi 1.0$ .  
FOR PROCESSES USING PASTE REFLOW, HOLE MAY BE  
AS SMALL AS  $\phi 0.79$

mat'l. code		tolerances unless otherwise specified		CUSTOMER COPY		 www.fciconnect.com	
ltr	ecn no	dr	date	linear	.X $\pm$ .3	projection	title
M					.XX $\pm$ .13	 MM	5V EJECT HEADER ASSY
				angles	.XXX $\pm$ .051		product family
				dr	G.CLEMENS 12/20/99	size	dwg no
				enrg	D.BRANN 12/20/99	scale	95620
				chr	D.BRANN 12/20/99	1:1	A4
				appd	D.BRANN 12/20/99		
sheet index	revision sheet						cage code
							26
							4

ACAD

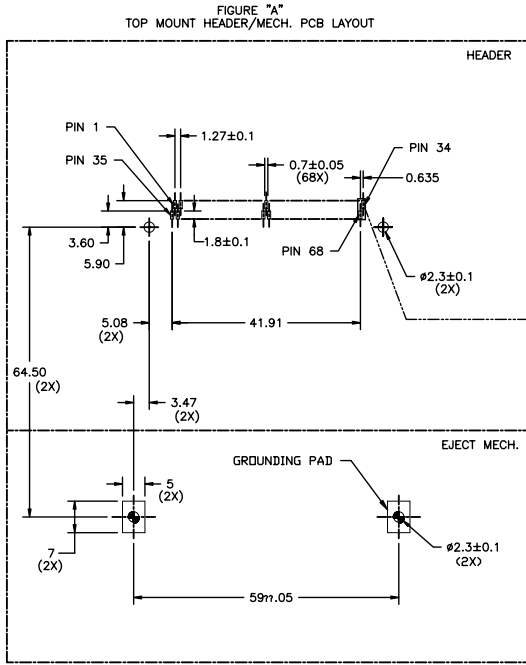
PDM: Rev:M

STATUS Released 2.6 Printed: Oct 12, 2014

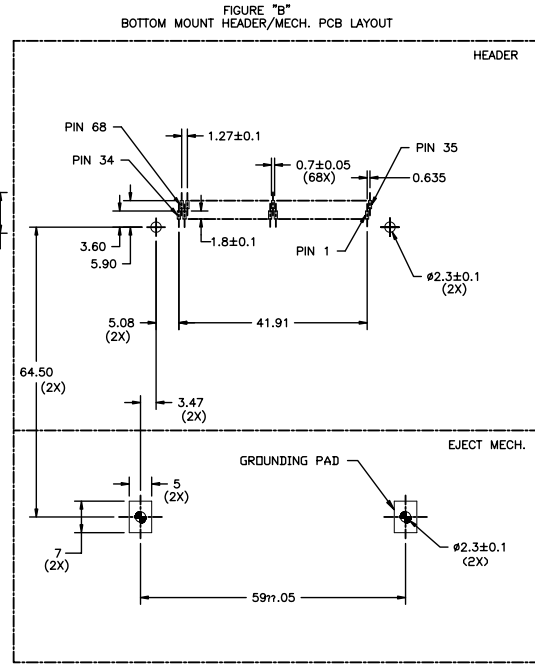
Tous droits strictement reserves. Reproduction ou communication a des tiers  
 interdite sous quelque forme que ce soit sans autorisation ecrite du proprietaire.  
 Propriete de c FCI. Droits de reproduction FCI.

All rights strictly reserved. Reproduction or issue to third parties in any  
 form whatever is not permitted without written authority from the Proprietor.  
 Property of FCI. Copyright FCI.

### Surface Mount 2-Row



BOARD VIEW FROM CONNECTOR MOUNTED SIDE  
TOP OF BOARD IN APPLICATION



BOARD VIEW FROM CONNECTOR MOUNTED SIDE  
BOTTOM OF BOARD IN APPLICATION

NOTES:

- 1 ALL TOLERANCES ±0.15 UNLESS NOTED.
- 2 KEEP-OUT ZONE FOR ASSEMBLIES SHOWN ON SHEET 9 FIGURE B.

mat'l. code		tolerances unless otherwise specified		CUSTOMER COPY		 FCI <a href="http://www.fciconnect.com">www.fciconnect.com</a>	
ltr	ecn no	dr	date	linear	.X±.3	projection	title
M					.XX±.13	 MM	5V EJECT HEADER ASSY
				angles	.XXX±.051		product family
				dr	0° ±2'	size	dwg no
				engr	G.CLEMENS 12/20/99	scale	A4 95620
				chr	D.BRANN 12/20/99	1:1	code
				appd	D.BRANN 12/20/99		sheet
sheet index	revision sheet						7 of

ACAD

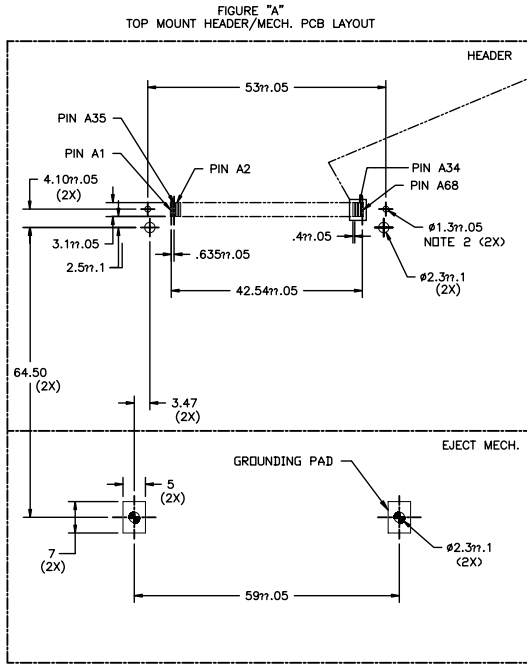
PDM: Rev:M

STATUS Released 2.6 Printed: Oct 12, 2014

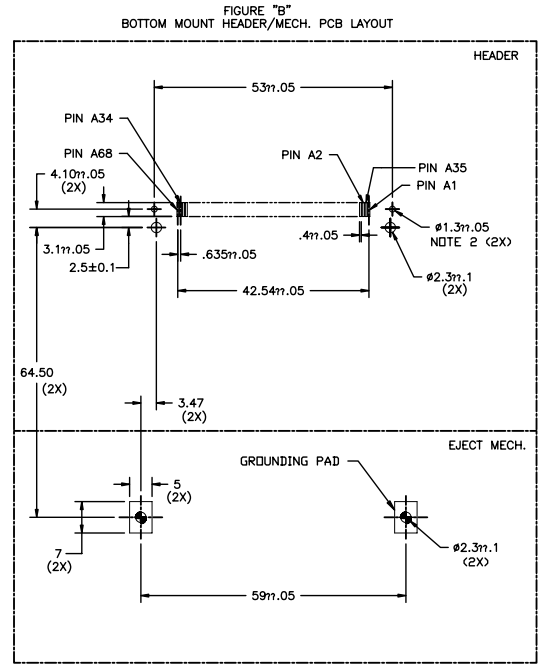
Tous droits strictement réservés. Reproduction ou communication à des tiers  
 interdite sous quelque forme que ce soit sans autorisation écrite du propriétaire.  
 Propriété de c FCI. Droits de reproduction FCI.

All rights strictly reserved. Reproduction or issue to third parties in any  
 form whatever is not permitted without written authority from the proprietor.  
 Property of FCI. Copyright FCI.

### Surface Mount In-Line



BOARD VIEW FROM CONNECTOR MOUNTED SIDE  
TOP OF BOARD IN APPLICATION



BOARD VIEW FROM CONNECTOR MOUNTED SIDE  
BOTTOM OF BOARD IN APPLICATION

NOTES:

- 1 ALL TOLERANCES ±.15 UNLESS NOTED.
- 2 THIS HOLE REQUIRED FOR HEADERS WITH BOARD LOCATOR.
- 3 KEEP-OUT ZONE FOR ASSEMBLIES SHOWN ON SHEET 9 FIGURE B.

mat'l. code		tolerances unless otherwise specified		CUSTOMER COPY		 <a href="http://www.fciconnect.com">www.fciconnect.com</a>	
ltr	ecn no	dr	date	linear	.X±.3	projection	title
M					.XX±.13	 MM	5V EJECT HEADER ASSY
				angles	.XXX±.051		product family
				dr	G.CLEMENS 12/20/99	scale	code
				enrg	D.BRANN 12/20/99	1:1	—
				chr	D.BRANN 12/20/99	size	dwg no
				appd	D.BRANN 12/20/99	A4	95620
sheet index	revision sheet					cage code	sheet 8 of

Tous droits strictement réservés. Reproduction ou communication à des tiers interdite sous quelque forme que ce soit sans autorisation écrite du propriétaire. Propriété de c FCI. Droits de reproduction FCI.

All rights strictly reserved. Reproduction or issue to third parties in any form whatever is not permitted without written authority from the proprietor. Property of FCI. Copyright FCI.