



## Features

- Available sharp click feel with a positive tactile feedback
- Ultra-miniature and lightweight structure suitable for high density mounting
- Very economical with high reliability
- RoHS compliant\*

**OBsolete**  
The SDTM Series is currently available, although not recommended for new designs.

- Insert molding in the contact with special treatment prevents flux buildup during soldering and permits autotipping

## SDTM Series SMD Tact Switch

### Electrical Characteristics

#### Electrical Life

.....50,000 cycles min. for 260 g  
500,000 cycles min. for 100 g, 160 g  
Rating .....DC 12 V, 50 mA  
Contact Resistance .....100 mohms max.  
Insulation Resistance ..100 Mohms min.,  
DC 500 V min.

#### Dielectric Strength

.....AC 250 V for 1 minute  
Contact Arrangement...1 pole 1 position

### Environmental Characteristics

Operation Force .....100 g, 160 g, 260 g  
Tolerance .....±50 g  
Stop Strength...Place the switch vertical,  
a static load of 3 kg shall be  
applied in the direction of actuator  
operation for a period of 15 seconds  
Stroke.....0.25 mm (+0.2 mm, -0.1 mm)  
Temperature Range.....-25 °C to +70 °C  
Vibration Test .....MIL-STD-202F,  
Method 201A  
Frequency .....10-50-10Hz/1minute  
Directions.....X,Y,Z 3 mutually per  
pendicular directions  
Time.....2 hours each direction,  
high reliability  
Shock Test .....MIL-STD-202F,  
Method 213A, Condition A  
Gravity .....50 g (peak value), 11 msec.  
Directions/Time.....6 sides and 3 times  
in each direction

### Physical Characteristics

Cover Materials .....Steel, tin plated  
Base Materials .....Thermoplastic Nylon  
FG 101, UL94V-0  
Actuator Materials .....Thermoplastic  
Nylon UL94V-0  
Color .....Black, brown, red  
Contact Disc. Materials .....Phosphor  
bronze with silver cladding  
Terminal Materials .....Brass with silver  
cladding

### How To Order

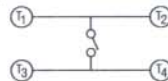
SDT M - 6 10 - K TR

Model .....  
Product Code .....  
M = SMD  
Size .....  
6 = 6 mm  
Height .....  
10 = 4.3 mm  
20 = 5.0 mm  
30 = 7.0 mm  
44 = 7.3 mm (square head)  
48 = 7.3 mm (square head)  
50 = 9.5 mm  
60 = 13 mm  
Actuating Force .....  
K = 100 g (black head)  
N = 160 g (brown head)  
R = 260 g (red head)  
S = 320 g (salmon head)  
Y = 520 g (yellow head)

Packaging Option .....  
TR = Embossed tape\*  
610 = 1000 pcs.  
620 = 900 pcs.  
630 = 700 pcs.  
644, 648 = 500 pcs.  
650 = 380 pcs.  
— = Tube  
All models = 77 pcs.

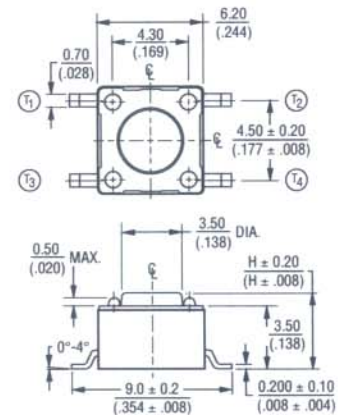
\*not applicable to Model 660.

### CIRCUIT DIAGRAM

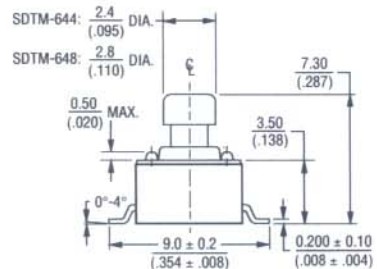
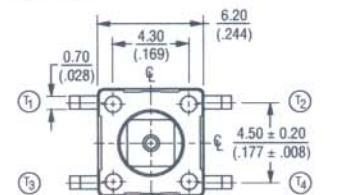


### Product Dimensions

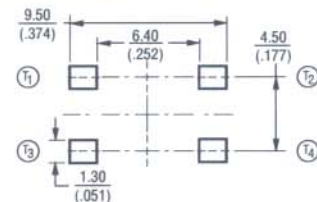
#### SDTM-610/620/630/650/660



#### SDTM-644/648



### RECOMMENDED PCB LAYOUT



DIMENSIONS: MM  
(IN)

TOLERANCES: 0.2  
(.008) EXCEPT WHERE NOTED.

**OBsolete**

\*RoHS Directive 2002/95/EC Jan 27 2003 including Annex.  
Specifications are subject to change without notice.  
Customers should verify actual device performance in their specific applications.

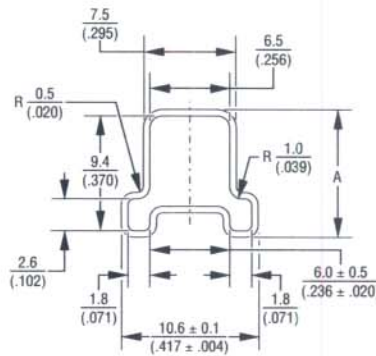
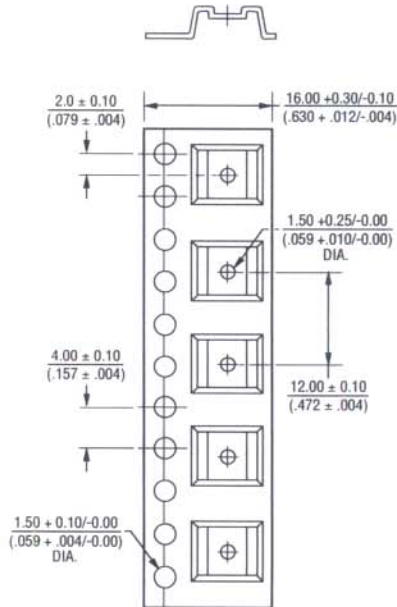
# SDTM Series SMD Tact Switch

**BOURNS®**

## Packaging Specifications

SDTM-610/620/630/644/648/650(TR)

SDTM-610/620/630/644/648/650/660(TUBE)

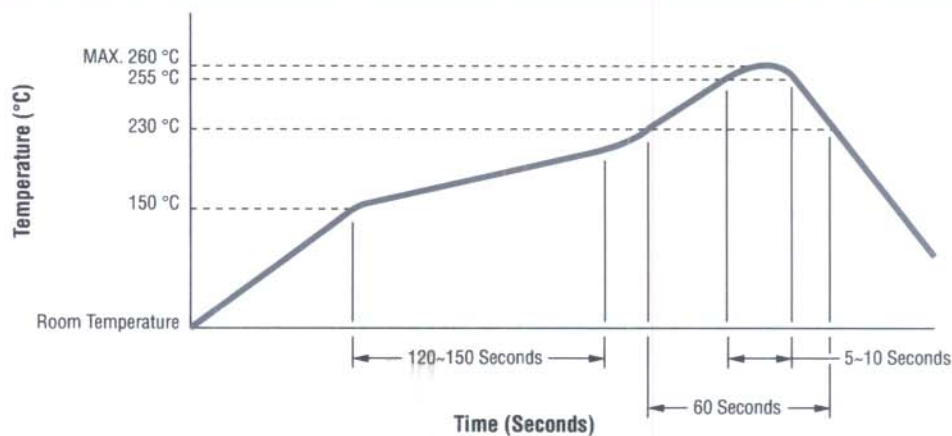


MODEL NO.	DIM. A
SDTM-630, 644, 648	$\frac{10.40}{(.409)}$
SDTM-650, 660	$\frac{15.9 \pm 0.1}{(.626 \pm .004)}$
SDTM-610, 620	$\frac{5.5}{(.217)}$

DIMENSIONS:  $\frac{MM}{(IN)}$   
TOLERANCES:  $\frac{0.2}{(.008)}$  EXCEPT WHERE NOTED.

**OBSOLETE**

## Reflow Soldering Profile



REV. 08/06

Specifications are subject to change without notice.  
Customers should verify actual device performance in their specific applications.