

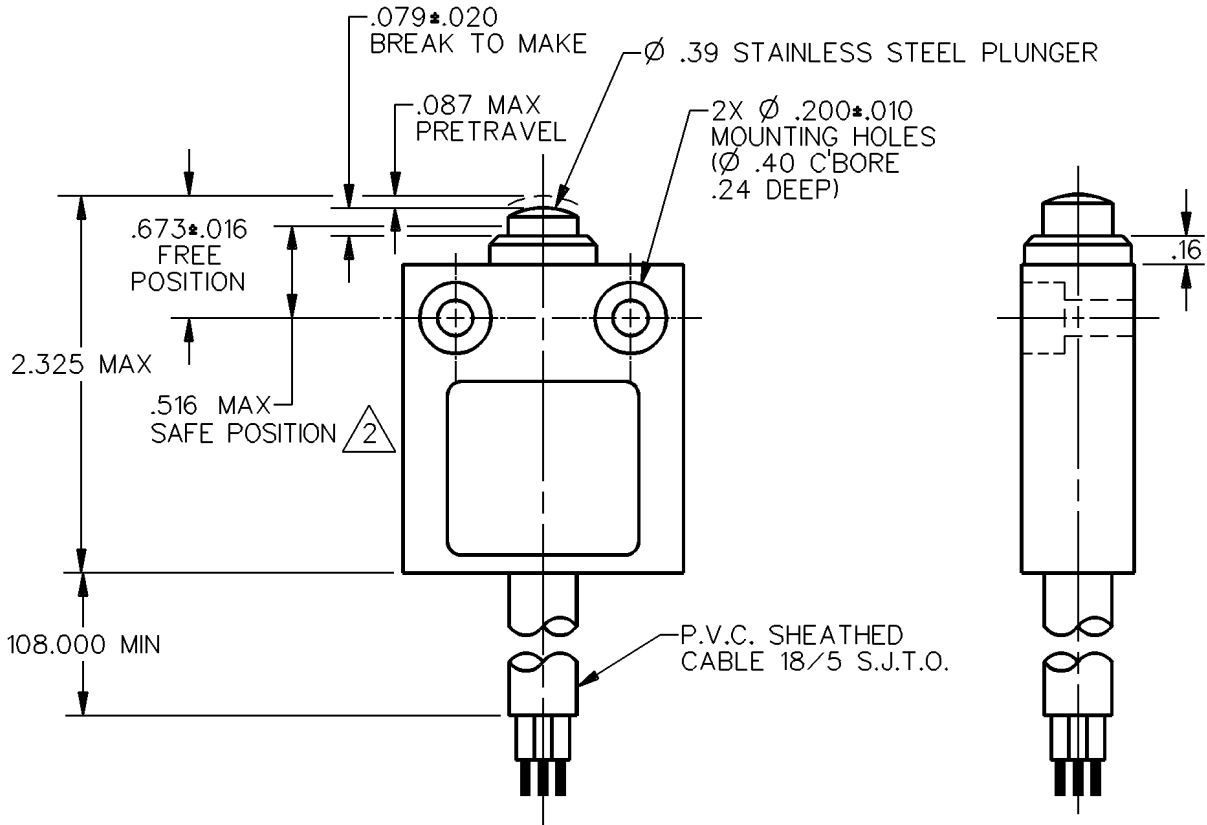
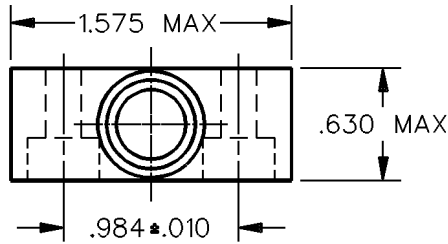
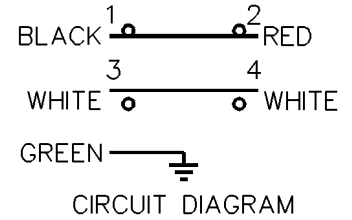
**MICRO SWITCH**  
a Honeywell Division

FED. MFG. CODE 91929

MINIATURE PRECISION  
LIMIT SWITCH

CATALOG LISTING

924CE1-S9



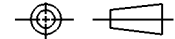
NOTES

- 1 - ZINC HOUSING FINISHED WITH GRAY PAINT
- △ THE MINIMUM PLUNGER TRAVEL PAST BREAK, FOR A SAFE CONTACT GAP IS .060
- 3 - SWITCH PROVIDES BREAK BEFORE MAKE CIRCUITRY

ANSI Y14.5M-1982 APPLIES

THIS DRAWING COVERS A PROPRIETARY ITEM AND IS THE PROPERTY OF MICRO SWITCH, A DIVISION OF HONEYWELL. THIS DRAWING IS NOT TO BE COPIED OR USED WITHOUT THE APPROVAL OF MICRO SWITCH.

THIRD ANGLE PROJECTION



CHARACTERISTICS

OPERATING FORCE — — — 5.1 LB MAX  
OVERTRAVEL — — — — .039 MIN

ELECTRICAL DATA

CONTACT ARRANGEMENT  
S P D T D B

10A-250 VAC  
1/3HP-125 OR 250 VAC



SCALE FULL

DO NOT SCALE PRINT

UNLESS OTHERWISE SPECIFIED TOLERANCES ARE

|                    |       |
|--------------------|-------|
| ONE PLACE (.0)     | ±.030 |
| TWO PLACE (.00)    | ±.015 |
| THREE PLACE (.000) | ±.005 |
| ANGLES             | ±     |

WEIGHT

924CE1-S9  
 M  
 DRAWING NUMBER  
 1  
 ISSUE  
 REVISIONS  
 CHECK  
 CHECK  
 DDM/CAD  
 DRAWN  
 SA V 10 OCT 91  
 CHECK  
 REPLACES  
 RELEASE NO. CO-69061