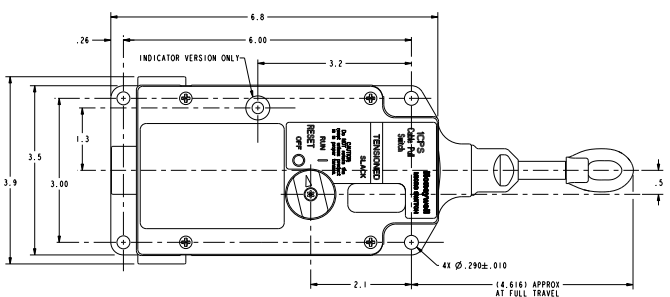


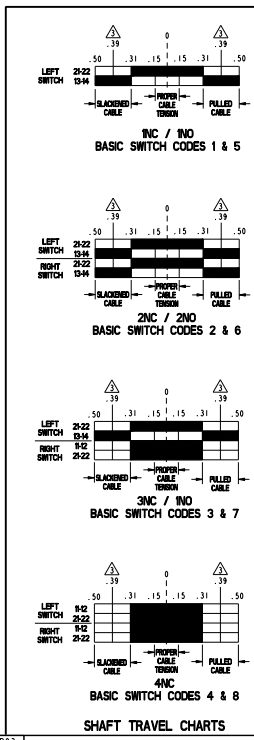
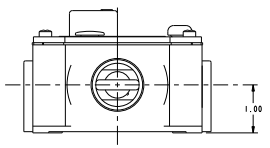
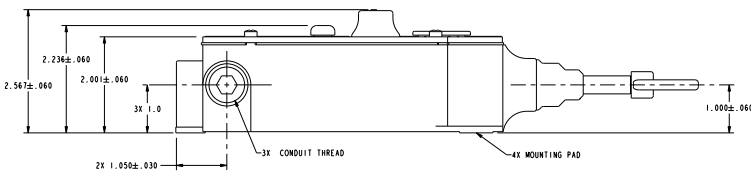
ICPS



BODY CODE	
A	1/2" NPT
B	PG13.5
C	20mm
D	PF 1/2

INDICATOR-PILOT LIGHT CODE	
A	24VDC LED
B	120VAC LED

BASIC SWITCH CODE	
1	1NO - 1NC DIRECT ACTING (SWITCH 1: 1NO - 1NC) (SWITCH 2: NONE)
2	2NO - 2NC DIRECT ACTING (SWITCH 1: 1NO - 1NC) (SWITCH 2: 1NO - 1NC)
3	1NO - 2NC DIRECT ACTING (SWITCH 1: 1NO - 1NC) (SWITCH 2: 2NC)
4	4NC DIRECT ACTING (SWITCH 1: 2NC) (SWITCH 2: 2NC)
5	1NO - 1NC DIRECT ACTING, GOLD PLATED (SWITCH 1: 1NO - 1NC) (SWITCH 2: NONE)
6	2NO - 2NC DIRECT ACTING, GOLD PLATED (SWITCH 1: 1NO - 1NC) (SWITCH 2: 1NO - 1NC)
7	1NO - 2NC DIRECT ACTING, GOLD PLATED (SWITCH 1: 1NO - 1NC) (SWITCH 2: 2NC)
8	4NC DIRECT ACTING, GOLD PLATED (SWITCH 1: 2NC) (SWITCH 2: 2NC)



NOTES
 1 - TWO CONDUIT THREAD PLUGS ARE INCLUDED WITH PRODUCT
 2 - NOMENCLATURE IS PROVIDED FOR IDENTIFICATION OF EXISTING LISTINGS.
 NOT ALL COMBINATIONS ARE AVAILABLE
 POSITIVE OPERATING TO IEC/EN60947-5-1
 FORCE TO MAINTAIN ACTUATION SHAFT AT PROPER TENSION: 25 LBS
 ACTUATION SHAFT OPERATE FORCE: 40 LBS

ELECTRICAL RATING				ENVIRONMENTAL		APPROVALS	
AC		DC		TP 67 NEMA 1, 4, 12 & 13		IEC/EN60947-5-1	
A300	AC15	Q300	DC13	TEMP RANGE: -25°C TO 85°C	UL	CE	IEC/EN60947-5-1
04	14	04	14	TEMP RANGE: -15°F TO 185°F			
(VOLTS)	(AMPS)	(VOLTS)	(AMPS)	STORAGE: -40°C TO 85°C			
120	24	120	2.8	STORAGE: -40°F TO 185°F			
240	5	250	.27	SHOCK: 15G PER IEC 68-2-27			
				VIBRATION: 5G PER IEC 68-2-6			

UNLESS OTHERWISE SPECIFIED TOLERANCES ARE:	DECIMAL	FRACTION	ANGLE	POSITION	DRIVEN	TSM	I1APRO3
NO PLACE	± .040	± 1/32	± 1/16	± .010	± .010	± .010	± .010
NO PLACE	± .015	± 1/64	± 1/16	± .010	± .010	± .010	± .010
NO PLACE	± .005	± 1/64	± 1/16	± .010	± .010	± .010	± .010
NO PLACE	± .005	± 1/64	± 1/16	± .010	± .010	± .010	± .010

Honeywell

SWITCH ASSEMBLY

ICPS SERIES CHART 1

SCALE: FULL WEIGHT

15 OF 1