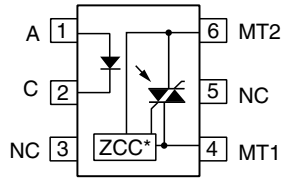
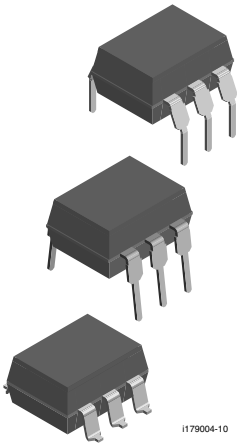


## Optocoupler, Phototriac Output, Zero Crossing



\*Zero crossing circuit



I179030\_3

I179004-10

### DESCRIPTION

The BRT21, BRT22, BRT23 product family consists of AC switch optocouplers with zero voltage detectors with two electrically insulated lateral power ICs which integrate a thyristor system, a photo detector and noise suppression at the output and an IR GaAs diode input.

High input sensitivity is achieved by using an emitter follower phototransistor and a SCR predriver resulting in an LED trigger current of less than 2 mA or 3 mA (DC). Inverse parallel SCRs provide commutating  $dV/dt$  greater than 10  $kV/\mu s$ .

The zero cross line voltage detection circuit consists of two MOSFETS and a photodiode.

The BRT21, BRT22, BRT23 product family isolates low-voltage logic from 120, 230, and 380 VAC lines to control resistive, inductive or capacitive loads including motors, solenoids, high current thyristors or TRIAC and relays.

### FEATURES

- High input sensitivity  $I_{FT} = 1 \text{ mA}$
- $I_{TRMS} = 300 \text{ mA}$
- High static  $dV/dt$  10 000  $V/\mu s$
- Electrically insulated between input and output circuit
- Microcomputer compatible
- Trigger current
  - ( $I_{FT} < 1.2 \text{ mA}$ ) BRT22F, BRT23F,
  - ( $I_{FT} < 2 \text{ mA}$ ) BRT21H, BRT22H, BRT23H
  - ( $I_{FT} < 3 \text{ mA}$ ) BRT21M, BRT22M, BRT23M
- Available surface mount and on on tape and reel
- Zero voltage crossing detector
- Compliant to RoHS Directive 2002/95/EC and in accordance to WEEE 2002/96/EC



RoHS COMPLIANT

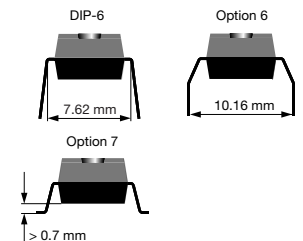
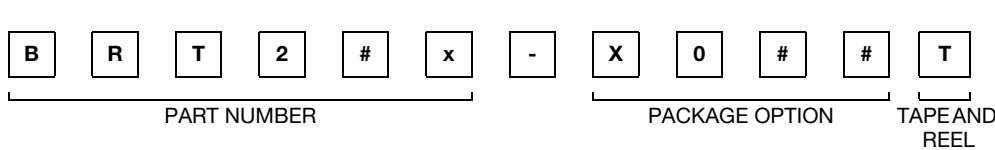
### APPLICATIONS

- Industrial controls
- Office equipment
- Consumer appliances

### AGENCY APPROVALS

- UL file no. E52744 system code J
- DIN EN 60747-5-2 (VDE 0844)
- DIN EN 60747-5-5 (pending) available with option 1

### ORDERING INFORMATION



AGENCY CERTIFIED/ PACKAGE	$V_{DRM} \text{ (V)}$								
	$\leq 400$		$\leq 600$			$\leq 800$			
UL	$I_{FT} = 2 \text{ mA}$	$I_{FT} = 3 \text{ mA}$	$I_{FT} = 1.2 \text{ mA}$	$I_{FT} = 2 \text{ mA}$	$I_{FT} = 3 \text{ mA}$	$I_{FT} = 1.2 \text{ mA}$	$I_{FT} = 2 \text{ mA}$	$I_{FT} = 3 \text{ mA}$	
DIP-6	BRT21H	BRT21M	BRT22F	BRT22H	BRT22M	BRT23F	BRT23H	BRT23M	
DIP-6, 400 mil, option 6	-	-	BRT22F-X006	-	-	BRT23F-X006	BRT22H-X006	-	
SMD-6, option 7	BRT21H-X007	-	BRT22F-X007 <sup>(1)</sup>	BRT22H-X007 <sup>(1)</sup>	-	BRT23F-X007 <sup>(1)</sup>	BRT23H-X007 <sup>(1)</sup>	BRT23M-X007T	
SMD-6, option 9	-	-	BRT22F-X009T <sup>(1)</sup>	-	-	BRT23F-X009T	-	-	

# BRT21, BRT22, BRT23



Vishay Semiconductors Optocoupler, Phototriac Output, Zero Crossing

AGENCY CERTIFIED/ PACKAGE	$V_{DRM}$ (V)							
	$\leq 400$		$\leq 600$			$\leq 800$		
UL, VDE	$I_{FT} = 2 \text{ mA}$	$I_{FT} = 3 \text{ mA}$	$I_{FT} = 1.2 \text{ mA}$	$I_{FT} = 2 \text{ mA}$	$I_{FT} = 3 \text{ mA}$	$I_{FT} = 1.2 \text{ mA}$	$I_{FT} = 2 \text{ mA}$	$I_{FT} = 3 \text{ mA}$
DIP-6	-	-	BRT22F-X001	BRT22H-X001	-	-	BRT23H-X001	-
DIP-6, option 16	BRT21H-X016	BRT21M-X016	BRT22F-X016	BRT22H-X016	BRT22M-X016	-	BRT22H-X016	BRT23M-X016
SMD-6, option 17	-	-	BRT22F-X017T	BRT22H-X017	-	-	-	-
SMD-6, option 18	-	-	-	-	-	-	BRT23H-X018T	-

## Note

(1) Also available in tube, do not put T on the end.

ABSOLUTE MAXIMUM RATINGS <sup>(1)</sup> ( $T_{amb} = 25 \text{ }^\circ\text{C}$ , unless otherwise specified)						
PARAMETER	TEST CONDITION	PART	SYMBOL	VALUE	UNIT	
<b>INPUT</b>						
Reverse voltage	$I_R = 10 \text{ } \mu\text{A}$		$V_R$	6	V	
Forward current			$I_F$	60	mA	
Surge current			$I_{FSM}$	2.5	A	
Power dissipation			$P_{diss}$	100	mW	
Derate from 25 °C				1.33	mW/°C	
<b>OUTPUT</b>						
Peak off-state voltage	$I_{D(RMS)} = 70 \text{ } \mu\text{A}$	BRT21	$V_{DM}$	400	V	
		BRT22	$V_{DM}$	600	V	
		BRT23	$V_{DM}$	800	V	
RMS on-state current			$I_{TM}$	300	mA	
Single cycle surge current				3	A	
Power dissipation			$P_{diss}$	600	mW	
Derate from 25 °C				6.6	mW/°C	
<b>COUPLER</b>						
Isolation test voltage (between emitter and detector, climate per DIN 500414, part 2, Nov. 74)	$t = 1 \text{ s}$		$V_{ISO}$	5300	$V_{RMS}$	
Pollution degree (DIN VDE 0109)				2		
Creepage distance				$\geq 7$	mm	
Clearance distance				$\geq 7$	mm	
Comparative tracking index per DIN IEC 112/VDE 0303 part 1, group IIIa per DIN VDE 6110			CTI	$\geq 175$		
Isolation resistance	$V_{IO} = 500 \text{ V}, T_{amb} = 25 \text{ }^\circ\text{C}$		$R_{IO}$	$\geq 10^{12}$	$\Omega$	
	$V_{IO} = 500 \text{ V}, T_{amb} = 100 \text{ }^\circ\text{C}$		$R_{IO}$	$\geq 10^{11}$	$\Omega$	
Storage temperature range			$T_{stg}$	- 40 to + 150	°C	
Ambient temperature range			$T_{amb}$	- 40 to + 100	°C	
Soldering temperature <sup>(2)</sup>	max. $\leq 10 \text{ s}$ dip soldering $\geq 0.5 \text{ mm}$ from case bottom		$T_{sld}$	260	°C	

## Notes

(1) Stresses in excess of the absolute maximum ratings can cause permanent damage to the device. Functional operation of the device is not implied at these or any other conditions in excess of those given in the operational sections of this document. Exposure to absolute maximum ratings for extended periods of the time can adversely affect reliability.

(2) Refer to reflow profile for soldering conditions for surface mounted devices (SMD). Refer to wave profile for soldering conditions for through hole devices (DIP).



<b>ELECTRICAL CHARACTERISTICS</b> ( $T_{amb} = 25\text{ }^{\circ}\text{C}$ , unless otherwise specified)						
PARAMETER	TEST CONDITION	SYMBOL	MIN.	TYP.	MAX.	UNIT
<b>INPUT</b>						
Forward voltage	$I_F = 10\text{ mA}$	$V_F$		1.16	1.35	V
Reverse current	$V_R = 6\text{ V}$	$I_R$		0.1	10	$\mu\text{A}$
Capacitance	$f = 1\text{ MHz}, V_F = 0\text{ V}$	$C_O$		25		pF
Thermal resistance, junction to ambient		$R_{thJA}$		750		K/W
<b>OUTPUT</b>						
Off-state voltage	$I_{D(RMS)} = 70\text{ }\mu\text{A}$	$V_{D(RMS)}$	424	460		V
Repetitive peak off-state voltage	$I_{DRM} = 100\text{ }\mu\text{A}$	$V_{DRM}$	600			V
Off-state current	$V_D = V_{DRM}, T_{amb} = 100\text{ }^{\circ}\text{C}, I_F = 0\text{ mA}$	$I_{D(RMS)}$		10	100	$\mu\text{A}$
On-state voltage	$I_T = 300\text{ mA}$	$V_{TM}$		1.7	3	V
On-state current	$PF = 1, V_{T(RMS)} = 1.7\text{ V}$	$I_{TM}$			300	mA
Surge (non-repetitive), on-state current	$f = 50\text{ Hz}$	$I_{TSM}$			3	A
Trigger current temp. gradient		$\Delta I_{FT1}/\Delta T_j$		7	14	$\mu\text{A/K}$
		$\Delta I_{FT2}/\Delta T_j$		7	14	$\mu\text{A/K}$
Inhibit voltage temp. gradient		$\Delta V_{DINH}/\Delta T_j$		-20		mV/K
Off-state current in inhibit state	$I_F = I_{FT1}, V_{DRM}$	$I_{DINH}$		50	200	$\mu\text{A}$
Holding current		$I_H$		65	500	$\mu\text{A}$
Latching current	$V_T = 2.2\text{ V}$	$I_L$		5		mA
Zero cross inhibit voltage	$I_F = \text{rated } I_{FT}$	$V_{IH}$		15	25	V
Turn-on time	$V_{RM} = V_{DM} = V_{D(RMS)}$	$t_{on}$		35		$\mu\text{s}$
Turn-off time	$PF = 1, I_T = 300\text{ mA}$	$t_{off}$		50		$\mu\text{s}$
Critical rate of rise of off-state voltage	$V_D = 0.67 V_{DRM}, T_j = 25\text{ }^{\circ}\text{C}$	$dV/dt_{cr}$	10 000			V/ $\mu\text{s}$
	$V_D = 0.67 V_{DRM}, T_j = 80\text{ }^{\circ}\text{C}$	$dV/dt_{cr}$	5000			V/ $\mu\text{s}$
Critical rate of rise of voltage at current commutation	$V_D = 230 V_{RMS}, I_D = 300\text{ mA}_{RMS}, T_j = 25\text{ }^{\circ}\text{C}$	$dV/dt_{crq}$		8		V/ $\mu\text{s}$
	$V_D = 230 V_{RMS}, I_D = 300\text{ mA}_{RMS}, T_j = 85\text{ }^{\circ}\text{C}$	$dV/dt_{crq}$		7		V/ $\mu\text{s}$
Critical rate of rise of on-state at current commutation	$V_D = 230 V_{RMS}, I_D = 300\text{ mA}_{RMS}, T_j = 25\text{ }^{\circ}\text{C}$	$dI/dt_{crq}$		12		A/ms
Thermal resistance, junction to ambient		$R_{thJA}$		125		K/W
<b>COUPLER</b>						
Critical rate of rise of coupled input/output voltage	$I_T = 0\text{ A}, V_{RM} = V_{DM} = V_{D(RMS)}$	$dV_{IO}/dt$		10 000		V/ $\mu\text{s}$
Common mode coupling capacitance		$C_{CM}$		0.01		pF
Capacitance (input to output)	$f = 1\text{ MHz}, V_{IO} = 0\text{ V}$	$C_{IO}$		0.8		pF
Isolation resistance	$V_{IO} = 500\text{ V}, T_{amb} = 25\text{ }^{\circ}\text{C}$	$R_{is}$		$\geq 10^{12}$		$\Omega$
	$V_{IO} = 500\text{ V}, T_{amb} = 100\text{ }^{\circ}\text{C}$	$R_{is}$		$\geq 10^{11}$		$\Omega$
Trigger current	$V_D = 5\text{ V}, F\text{-versions}$	$I_{FT}$			1.2	mA
	$V_D = 5\text{ V}, H\text{-versions}$	$I_{FT}$			2	mA
	$V_D = 5\text{ V}, M\text{-versions}$	$I_{FT}$			3	mA

**Note**

- Minimum and maximum values are testing requirements. Typical values are characteristics of the device and are the result of engineering evaluation. Typical values are for information only and are not part of the testing requirements.

SAFETY AND INSULATION RATINGS						
PARAMETER	TEST CONDITION	SYMBOL	MIN.	TYP.	MAX.	UNIT
Climatic classification (according to IEC 68 part 1)				40/100/21		
Comparative tracking index		CTI	175		399	
$V_{IOTM}$			6000			V
$V_{IORM}$			630			V
$P_{SO}$					200	mW
$I_{SI}$					400	mA
$T_{SI}$					175	°C
Creepage distance	standard DIP-6		7			mm
Clearance distance	standard DIP-6		7			mm
Creepage distance	400 mil DIP-6		8			mm
Clearance distance	400 mil DIP-6		8			mm

**Note**

- As per IEC 60747-5-2, § 7.4.3.8.1, this optocoupler is suitable for "safe electrical insulation" only within the safety ratings. Compliance with the safety ratings shall be ensured by means of protective circuits.

**POWER FACTOR CONSIDERATIONS**

A snubber is not needed to eliminate false operation of the TRIAC driver because of the high static and commutating  $dV/dt$  with loads between 1.0 and 0.8 power factors. When inductive loads with power factors less than 0.8 are being driven, include a RC snubber or a single capacitor directly across the device to damp the peak commutating  $dV/dt$  spike. Normally a commutating  $dV/dt$  causes a turning-off device to stay on due to the stored energy remaining in the turning-off device.

But in the case of a zero voltage crossing optotriac, the commutating  $dV/dt$  spikes can inhibit one half of the TRIAC from turning on. If the spike potential exceeds the inhibit voltage of the zero cross detection circuit, half of the TRIAC will be held off and not turn-on. This hold-off condition can be eliminated by using a snubber or capacitor placed directly across the optotriac as shown in figure 1. Note that the value of the capacitor increases as a function of the load current.

The hold-off condition also can be eliminated by providing a higher level of LED drive current. The higher LED drive provides a larger photocurrent which causes the phototransistor to turn-on before the commutating spike has activated the zero cross network. Figure 2 shows the relationship of the LED drive for power factors of less than 1.0. The curve shows that if a device requires 1.5 mA for a resistive load, then 1.8 times 2.7 mA) that amount would be required to control an inductive load whose power factor is less than 0.3.

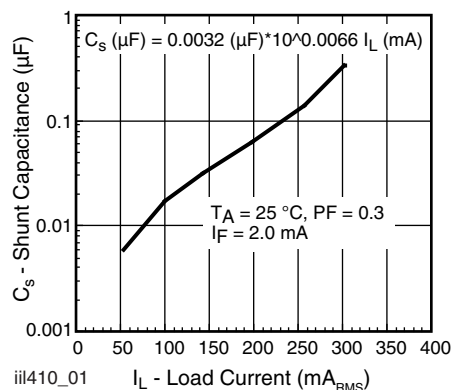


Fig. 1 - Shunt Capacitance vs. Load Current

### TYPICAL CHARACTERISTICS ( $T_{amb} = 25\text{ }^{\circ}\text{C}$ , unless otherwise specified)

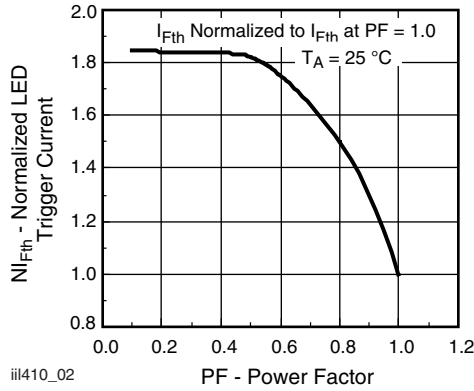


Fig. 2 - Normalized LED Trigger Current vs. Power Factor

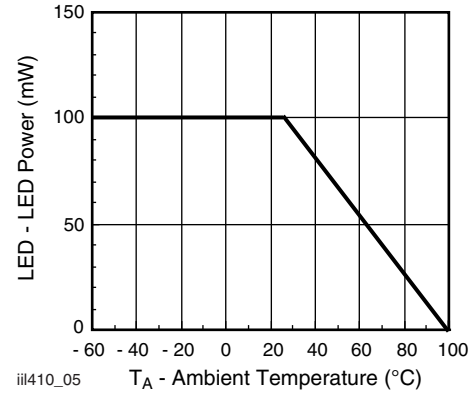


Fig. 5 - Maximum LED Power Dissipation

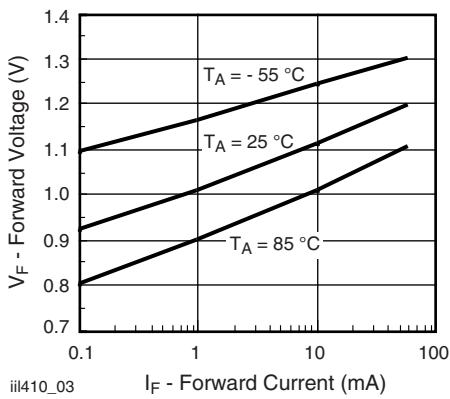


Fig. 3 - Forward Voltage vs. Forward Current

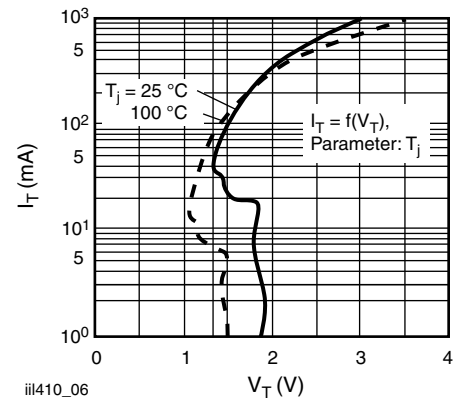


Fig. 6 - Typical Output Characteristics

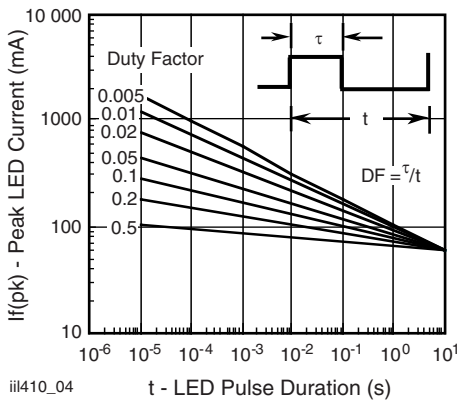


Fig. 4 - Peak LED Current vs. Duty Factor, Tau

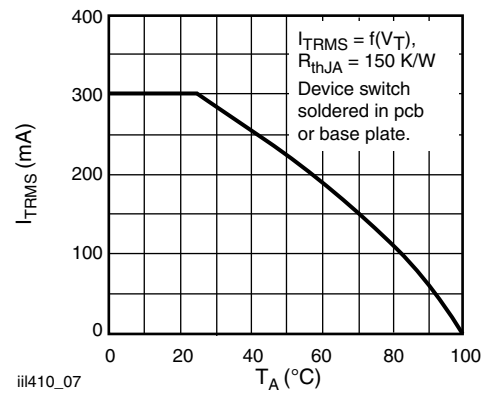
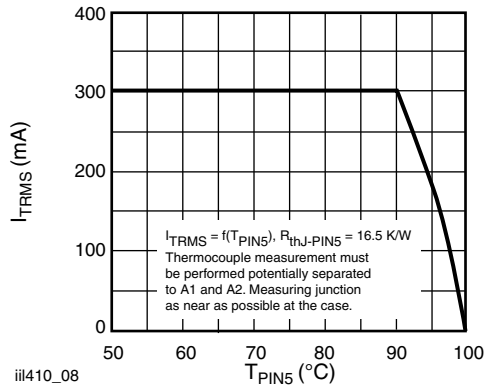
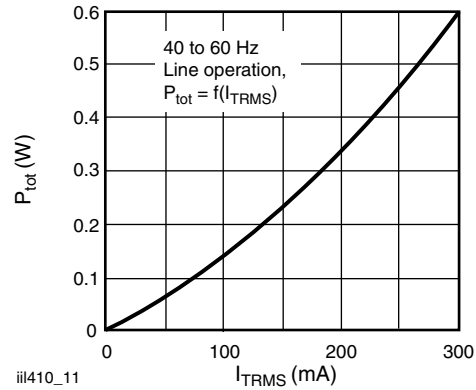


Fig. 7 - Current Reduction



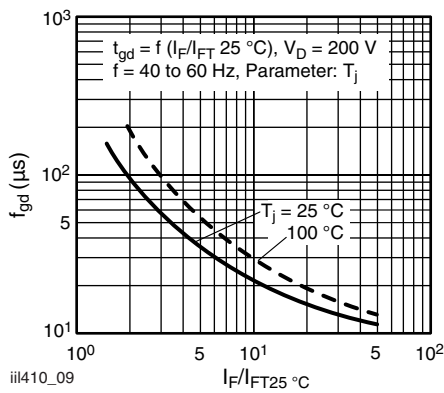
iii410\_08

Fig. 8 - Current Reduction



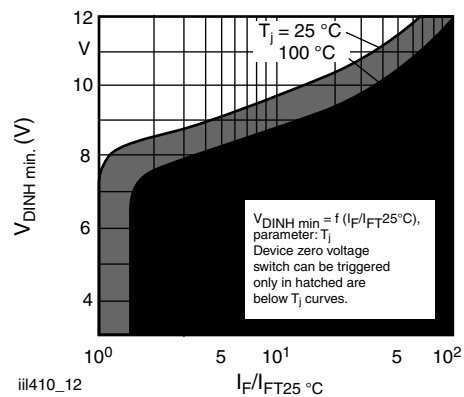
iii410\_11

Fig. 11 - Power Dissipation 40 to 60 Hz Line Operation



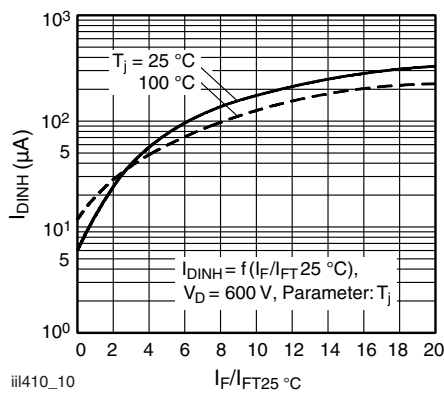
iii410\_09

Fig. 9 - Typical Trigger Delay Time



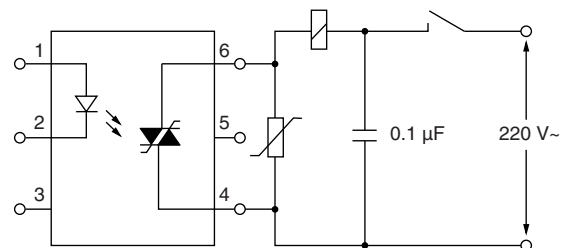
iii410\_12

Fig. 12 - Typical Static Inhibit Voltage Limit



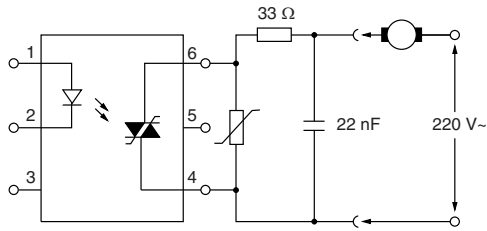
iii410\_10

Fig. 10 - Typical Inhibit Current



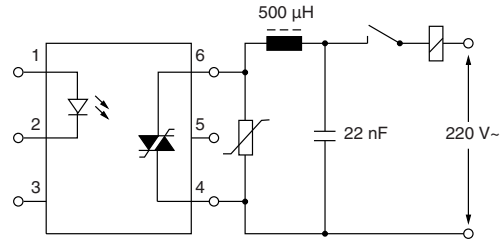
iii410\_13

Fig. 13 - Apply a Capacitor to the Supply Pins at the Load-Side



iii410\_14

Fig. 14 - Connect a Series Resistor to the Output and Bridge Both by a Capacitor



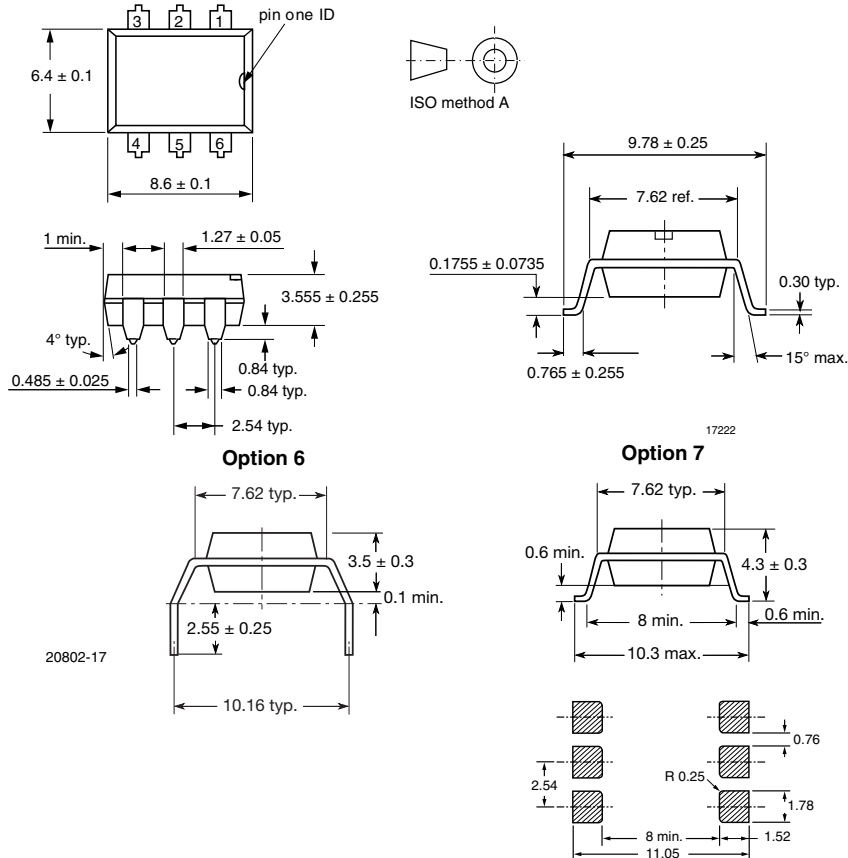
iii410\_15

Fig. 15 - Connect a Choke of Low Winding Cap. in Series, e.g., a Ringcore Choke, with Higher Load Currents

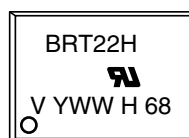
### TECHNICAL INFORMATION

See Application Note for additional information.

### PACKAGE DIMENSIONS in millimeters



### PACKAGE MARKING



21764-86

### Note

- Basic product marking only, refer to option information document number 83713 for option marking



## Disclaimer

All product specifications and data are subject to change without notice.

Vishay Intertechnology, Inc., its affiliates, agents, and employees, and all persons acting on its or their behalf (collectively, "Vishay"), disclaim any and all liability for any errors, inaccuracies or incompleteness contained herein or in any other disclosure relating to any product.

Vishay disclaims any and all liability arising out of the use or application of any product described herein or of any information provided herein to the maximum extent permitted by law. The product specifications do not expand or otherwise modify Vishay's terms and conditions of purchase, including but not limited to the warranty expressed therein, which apply to these products.

No license, express or implied, by estoppel or otherwise, to any intellectual property rights is granted by this document or by any conduct of Vishay.

The products shown herein are not designed for use in medical, life-saving, or life-sustaining applications unless otherwise expressly indicated. Customers using or selling Vishay products not expressly indicated for use in such applications do so entirely at their own risk and agree to fully indemnify Vishay for any damages arising or resulting from such use or sale. Please contact authorized Vishay personnel to obtain written terms and conditions regarding products designed for such applications.

Product names and markings noted herein may be trademarks of their respective owners.