

4

3

2

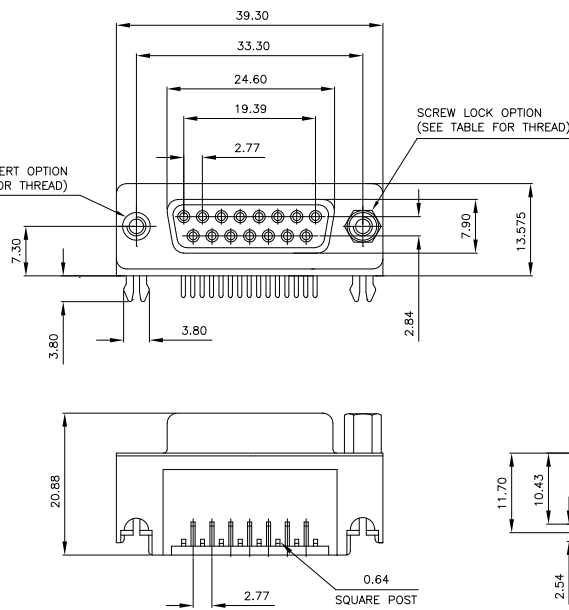
1

THIS DRAWING IS UNPUBLISHED. RELEASED FOR PUBLICATION
 COPYRIGHT - By - ALL RIGHTS RESERVED.

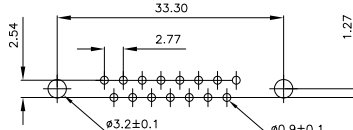
LOC	DIST	REVISIONS			
P	LTR	DESCRIPTION	DATE	DWN	APVD
B2		REVISED PER ECO-11-005150	21MAR11	RK	HMR

- NOTES:
- FOR LOCAL DATA REFER TO YOUR LOCAL TE CONNECTIVITY SALES OFFICE.
 - ALL DIMENSIONS ARE NOMINAL FOR REFERENCE ONLY UNLESS OTHERWISE STATED.
 - MATERIAL :
 HOUSING : THERMOPLASTIC, UL94V-0
 BLACK COLOR
 CONTACTS : PHOSPHOR BRONZE
 SHELL : STEEL
 BOARDLOCK : BRASS
 SCREW : BRASS
 - FINISH :
 CONTACT : 0.38µm MIN. GOLD PLATED ON CONTACT AREA
 2.54µm MIN. TIN PLATED ON SOLDER TAILS
 1.27µm MIN. NICKEL UNDERPLATED OVERALL
 SHELL : 1.52µm MIN. TIN PLATED
 BOARD LOCK : 1.52µm MIN. TIN PLATED
 SCREW : 1.27µm MIN. NICKEL PLATED.
 - CHARACTERISTICS
 CURRENT RATING : 5A
 INSULATION RESISTANCE : 1000MOHMS MIN, 500VDC FOR 2MINS.
 TEMPERATURE RATING : -55DEGC ~ +105DEGC
 VOLTAGE RATING : 250VDC

6. OBSOLETE PARTS: OBSOLETE CIS STREAMLINING PER D.RENAUD/D.SINISI



P.C.B. LAYOUT



15 WAY D SOCKET WITH BOARD LOCKS & 2 x M3 SCREW LOCKS, 0.38µm GOLD, RIGHT ANGLE	4-1634585-2
15 WAY D SOCKET WITH BOARD LOCKS & 2 x 4-40 SCREW LOCKS, 0.38µm GOLD, RIGHT ANGLE	3-1634585-2
15 WAY D SOCKET WITH BOARD LOCKS & 2 x M3 INSERTS, 0.38µm GOLD, RIGHT ANGLE	2-1634585-2
15 WAY D SOCKET WITH BOARD LOCKS & 2 x 4-40 INSERTS, 0.38µm GOLD, RIGHT ANGLE	1-1634585-2

6. OBSOLETE

THIS DRAWING IS A CONTROLLED DOCUMENT.		DWN	15SEP2003	TE TE Connectivity	
DIMENSIONS: mm		CHK	15SEP2003		
TOLERANCES UNLESS OTHERWISE SPECIFIED:		APVD	15SEP2003	NAME	
0 PLC ±		E.WHEELER-KING		15 WAY D-SUB SOCKET WITH BOARD LOCK	
1 PLC ±		PRODUCT SPEC		-	
2 PLC ±		APPLICATION SPEC		-	
3 PLC ±		WEIGHT		-	
4 PLC ±		SIZE		A3	
ANGLES ±		CAGE CODE		00779	
FINISH		DRAWING NO		C=1634585	
MATERIAL		RESTRICTED TO		-	
-		CUSTOMER DRAWING		SCALE NTS SHEET 1 of 2 REV B2	

4

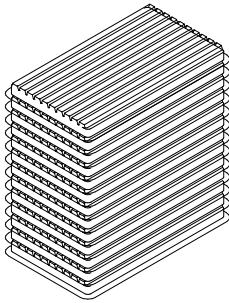
3

2

1

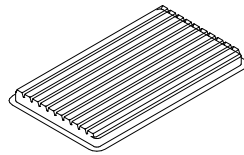
THIS DRAWING IS UNPUBLISHED. RELEASED FOR PUBLICATION
 © COPYRIGHT - By - ALL RIGHTS RESERVED.

LOC		DIST		REVISIONS			
P	LTR	DESCRIPTION		DATE	DWN	APVD	
-	-	SEE SHEET 1		-	-	-	

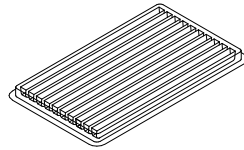


NOTES:
 1. DIMENSION:
 TRAY: L=310, W=220, H=23
 SHIPPING BOX: L=335, W=230, H=320
 2. QUANTITY:
 70 PCS/TRAY
 13 TRAY/SHIPPING BOX

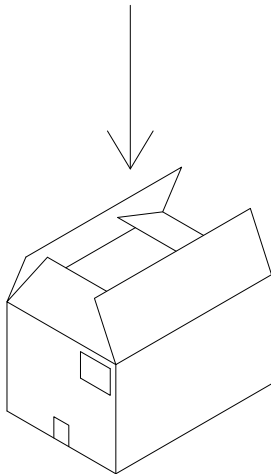
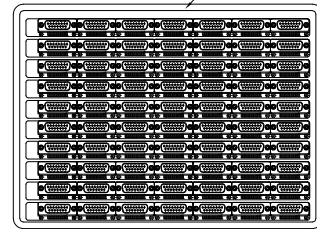
COVER




TRAY



Tray Layout



THIS DRAWING IS A CONTROLLED DOCUMENT.		DWN	15SEP2003			TE Connectivity	
		CHK	15SEP2003				
		APVD	15SEP2003		NAME	15 WAY D-SUB SOCKET WITH BOARD LOCK	
				PRODUCT SPEC			
				APPLICATION SPEC			
				WEIGHT			
				SIZE	CAGE CODE	DRAWING NO	RESTRICTED TO
				A3	00779	1634585	-
				CUSTOMER DRAWING		SCALE	NTS
				SHEET		2 of 2	REV B2