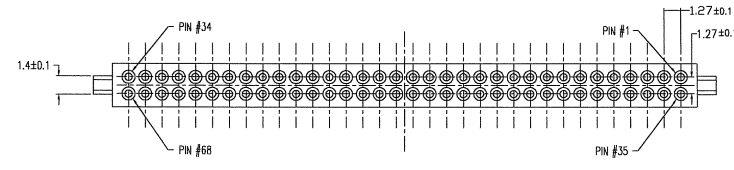
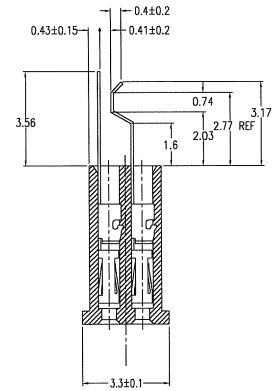
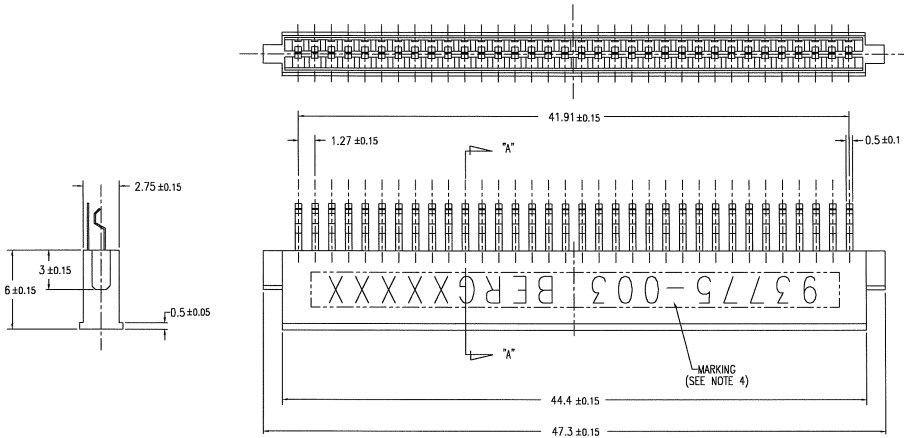
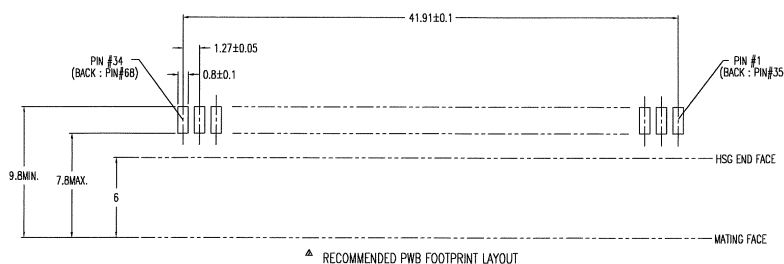


PRODUCT NO.	HOUSING COLOR	PACKAGING	FINISH
93775-003	BLACK	STANDARD TRAY	SEE NOTE ①
93775-003LF	BLACK	STANDARD TRAY	SEE NOTE ②



NOTE

- MATERIAL
CONTACT : BeCu 0.08t
HSG : LCP UL94V-0
FINISH(PLATING)
CONTACT : ALL OVER ----- Ni UNDER 0.5 μm THK.MIN.
SELECTIVE ----- Au PLATING 0.1 μm THK.MIN.
OVER Pd-Ni PLATING.
SOLDER TAIL ----- TIN LEAD 2.5 μm THK. MIN.
- FOR MATING MALE CONN.(HDR./EJECTOR HDR.)
TO APPLY 68POS. MALE CONN.(HDR./EJECTOR HDR.) BASED ON
JEIDA AND PCMCIA SPECIFICATION
- GENERAL TOLERANCE : ±0.25
- MARKING: "93775-003 BERGXXXX" (XXXXX : LOT No.)
- RECOMMENDED PWB THICKNESS : 0.34 TO 0.6
- 93775-003LF FINISH(PLATING)
CONTACT : ALL OVER ----- Ni UNDER 0.5 μm THK.MIN.
SELECTIVE ----- Au PLATING 0.1 μm THK.MIN.
OVER Pd-Ni PLATING.
SOLDER TAIL ----- Au FLASH
- THIS LF SUFFIX PRODUCT MEETS EUROPEAN UNION DIRECTIVES
AND OTHER COUNTRY REGULATIONS AS DESCRIBED IN GS-22-00B.



mat'l. code	surface	tolerance	projection	product family	CODE
---	iso 1302	iso 1302	iso 1302	SBI-F-PCMCIA RECEPTACLE	JP
1	REVISED	KS 1/20/93	micro	JEIDA/PCMCIA	
2	REVISED	KS 1/31/94	linear	68 POS. RECEPTACLE	
A	RELEASED	J40064 KS 2/28/94	0.0XX ±0.25		
B	REVISED	J06-0159 R.S 4/18/06	0.0XX ±0.25	scale 5:1	
C	REVISED	J06-0354 R.S 3/16/06			
sheet index	revision sheet	C			