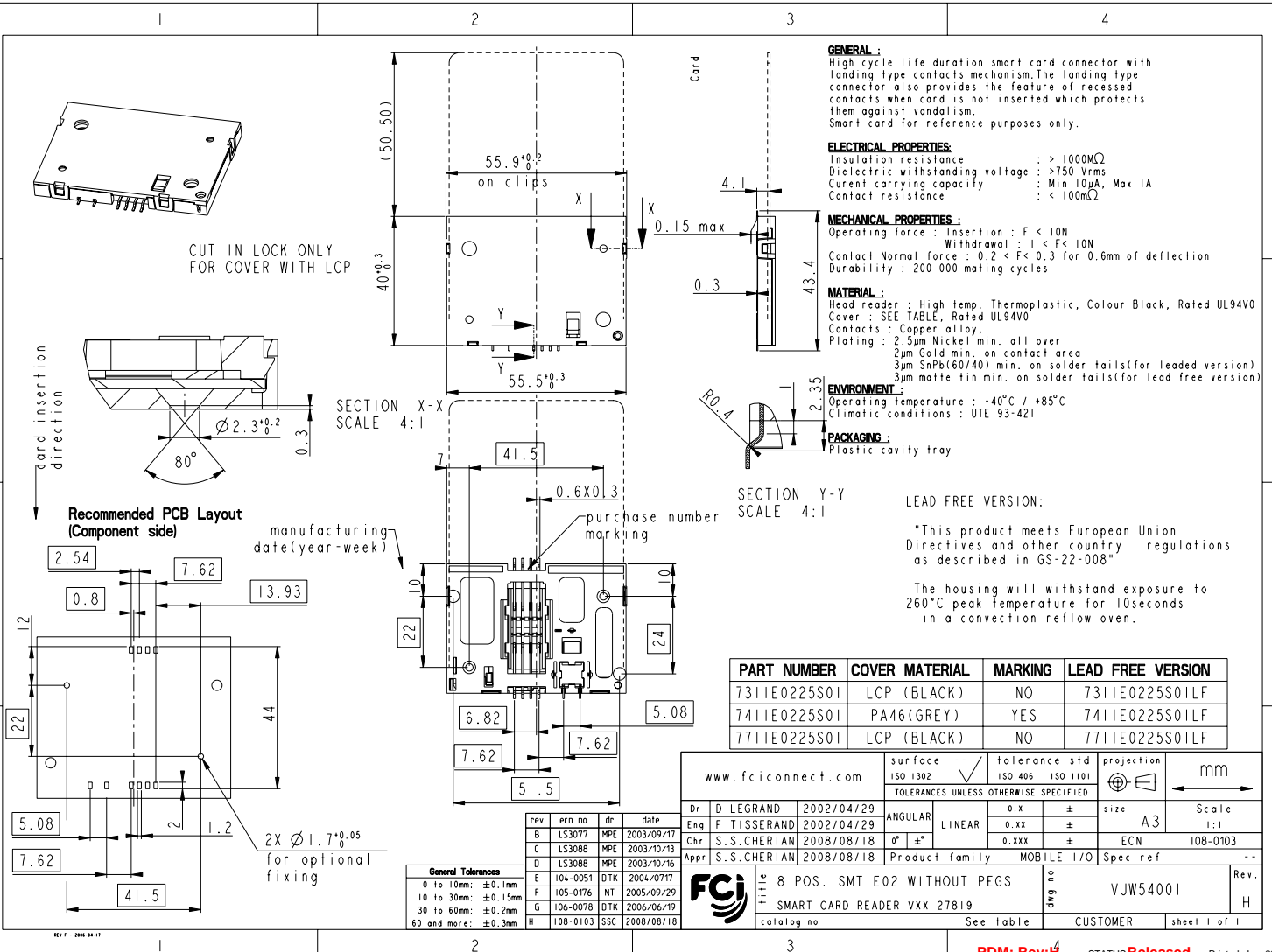


Copyright FCI



**GENERAL:**  
High cycle life duration smart card connector with landing type contacts mechanism. The landing type connector also provides the feature of recessed contacts when card is not inserted which protects them against vandalism.  
Smart card for reference purposes only.

**ELECTRICAL PROPERTIES:**  
Insulation resistance : > 1000MΩ  
Dielectric withstanding voltage : >750 Vrms  
Current carrying capacity : Min 10mA, Max 1A  
Contact resistance : < 100mΩ

**MECHANICAL PROPERTIES:**  
Operating force : Insertion : F < 10N  
Withdrawal : 1 < F < 10N  
Contact Normal force : 0.2 < F < 0.3 for 0.6mm of deflection  
Durability : 200 000 mating cycles

**MATERIAL:**  
Head reader : High temp. Thermoplastic, Colour Black, Rated UL94V0  
Cover : SEE TABLE, Rated UL94V0  
Contacts : Copper alloy,  
Plating : 2.5µm Nickel min. all over  
2µm Gold min. on contact area  
3µm SnPb(60/40) min. on solder tails(for leaded version)  
3µm molte tin min. on solder tails(for lead free version)

**ENVIRONMENT:**  
Operating temperature : -40°C / +85°C  
Climatic conditions : UTE 93-421

**PACKAGING:**  
Plastic cavity tray

**LEAD FREE VERSION:**  
"This product meets European Union Directives and other country regulations as described in GS-22-008"  
The housing will withstand exposure to 260°C peak temperature for 10seconds in a convection reflow oven.

| PART NUMBER  | COVER MATERIAL | MARKING | LEAD FREE VERSION |
|--------------|----------------|---------|-------------------|
| 7311E0225S01 | LCP (BLACK)    | NO      | 7311E0225S01LF    |
| 7411E0225S01 | PA46(GREY)     | YES     | 7411E0225S01LF    |
| 7711E0225S01 | LCP (BLACK)    | NO      | 7711E0225S01LF    |

|                    |                        |                                       |                  |              |          |
|--------------------|------------------------|---------------------------------------|------------------|--------------|----------|
| www.fciconnect.com |                        | surface                               | tolerance std    | projection   | mm       |
| Dr                 | D LEGRAND 2002/04/29   | ISO 1302                              | ISO 406 ISO 1101 |              |          |
| Eng                | F TISSERAND 2002/04/29 | TOLERANCES UNLESS OTHERWISE SPECIFIED |                  |              |          |
| Chr                | S.S.CHERIAN 2008/08/18 | ANGULAR                               | 0.X ±            | size         | Scale    |
| Appr               | S.S.CHERIAN 2008/08/18 | LINEAR                                | 0.XX ±           | A3           | 1:1      |
|                    |                        | 0° ±*                                 | 0.XXX ±          | ECN          | 108-0103 |
|                    |                        | Product family                        | MOBILE I/O       | Spec ref     | --       |
|                    |                        | 8 POS. SMT E02 WITHOUT PEGS           | dwg no           | VJW54001     | Rev.     |
|                    |                        | SMART CARD READER VXX 27819           |                  |              | H        |
| catalog no         |                        | See table                             | CUSTOMER         | sheet 1 of 1 |          |