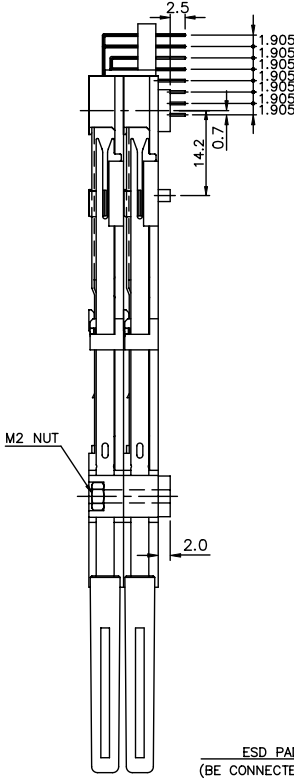
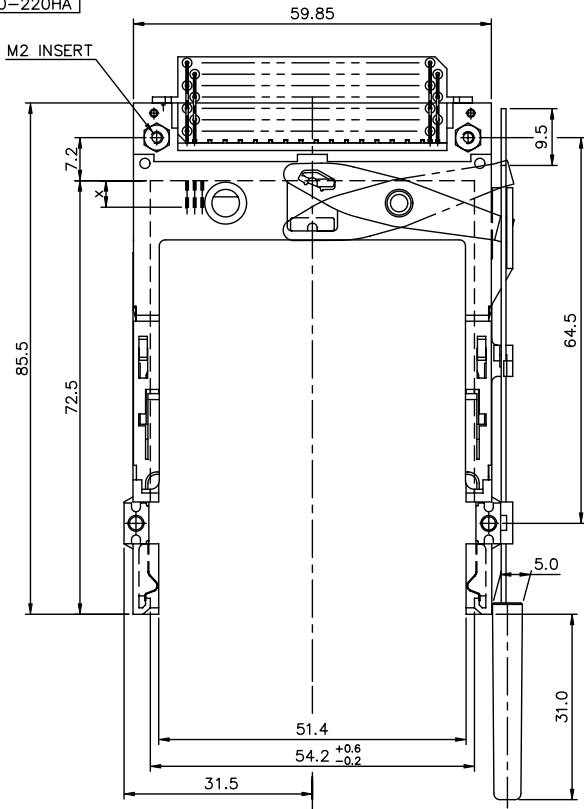
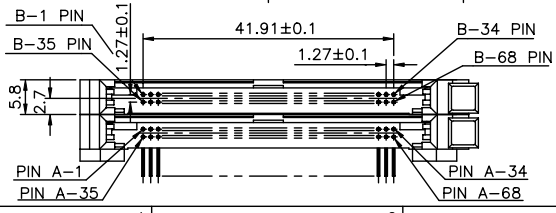
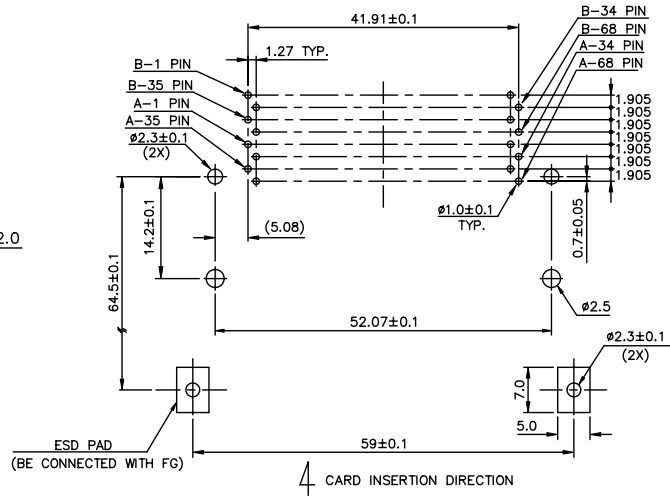


PRODUCT NO.
52360-220HA



- NOTES:
- EJECT FORCE : 3.5 Kg MAX.
 - EJECT TRAVEL: 8.0mm
 - MATERIAL
 - HEADER ASS'Y :
PLASTIC : HOUSING ...LCP UL94V-0 NATURAL
: LOCATOR ...G.F. 6/6 NYLON UL94-VO BLACK
PIN : COPPER ALLOY
 - EJECT MECHANISM ASS'Y :
PLASTIC : GUIDE: POLYPHTHARAMID UL94V-0 BLACK
: BUTTON: POLYPHTHARAMID UL94V-0 BLACK
PLATE : STAINLESS
EMI CONTACT: PHOSPHOR BRONZE
 - FINISH (PIN)
UNDER PLATING : 0.5 μm MIN. Ni
CONTACT AREA : 0.1 μm MIN. GOLD OVER 0.5 μm MIN. Pd-Ni
SOLDER TAIL : 2.5 μm MIN. Sn-Pb

4.25±0.1	3.5±0.1	5.0±0.1
OTHERS	36,67	1,17,34,35,51,68

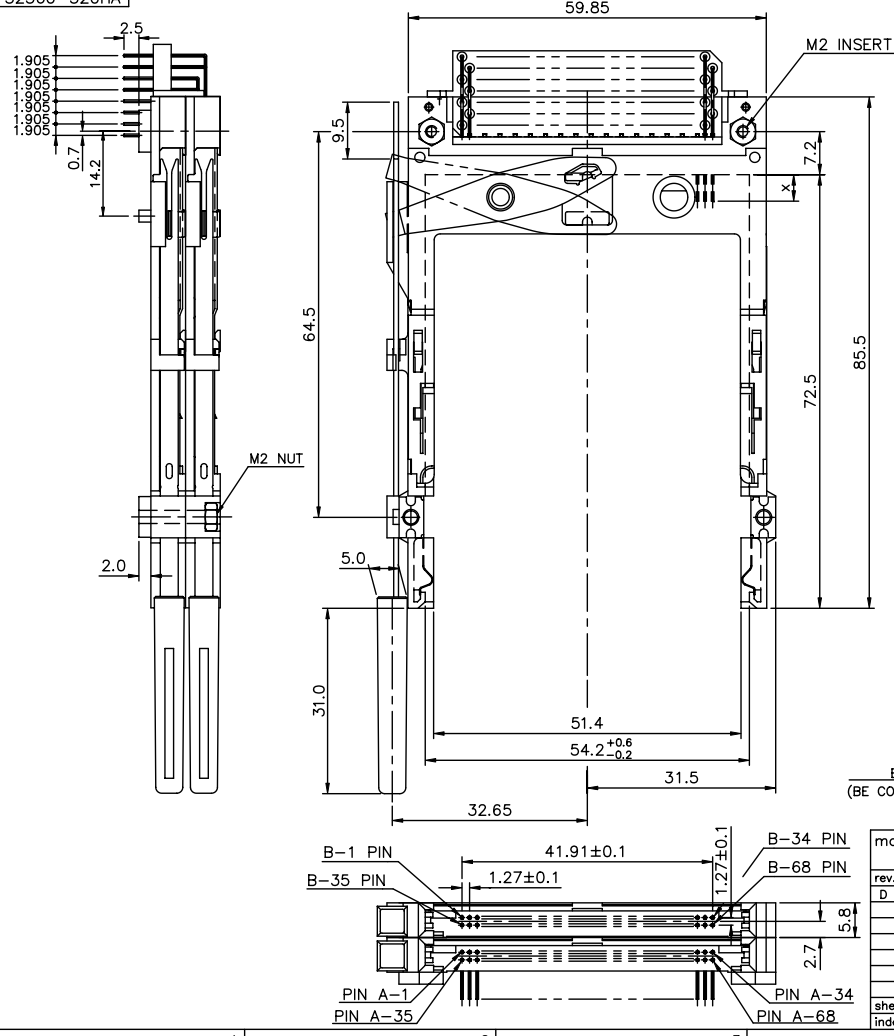


mat'l code		tolerance unless otherwise specified		CUSTOMER COPY		ELECTRONICS	
rev.	ecn no.	dr	date	linear	±0.30	projection	title
A	T90231	WL	06/15/99				DOUBLE DECK R/A EJECTOR
B	T00152	WL	01/14/00				TYPE 1/2/3
C	T10002	WL	01/03/01	angles	± 2°		
D	T20085	WL	03/18/02	dr	WENDY CHEN 06/15/99	unit	product family : PCMCIA
		enrg	STELAR CHU 06/15/99	scale	mm/inch	size	code
		chr	JOSEPH HSA 06/15/99	scale	1.5:1	dwg no.	TWN
		appd	JENN TSAO 06/15/99			52360	sheet
sheet	revision	D	D	D			1 of 3
index	sheet	1	2	3			

PDM: Rev:D STATUS: Released Printed: Oct 12, 2010

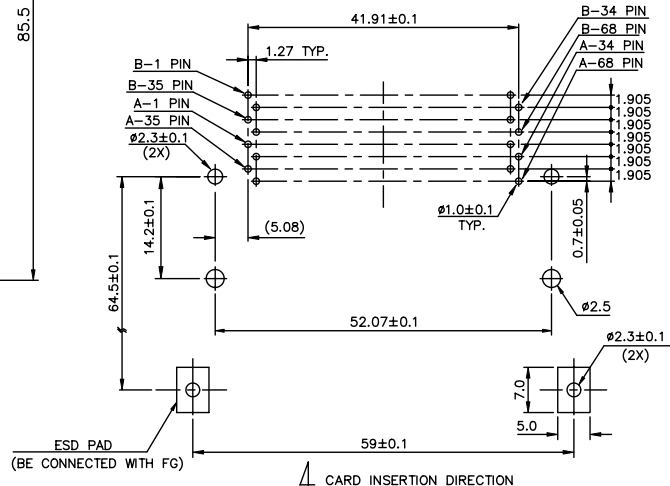
PRODUCT NO.
52360-320HA

Tous droits strictement réservés. Reproduction ou communication o des tiers int
 sous quelque forme que ce soit sans autorisation écrite du propriétaire.
 All rights strictly reserved. Reproduction or issue to third parties in any for
 whatever is not permitted without written authority from the proprietor.
 Copyright BERG ELECTRONICS by



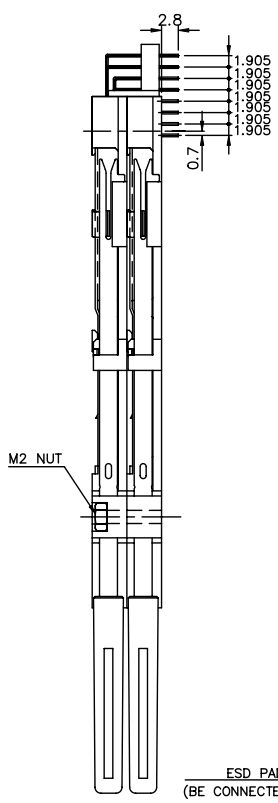
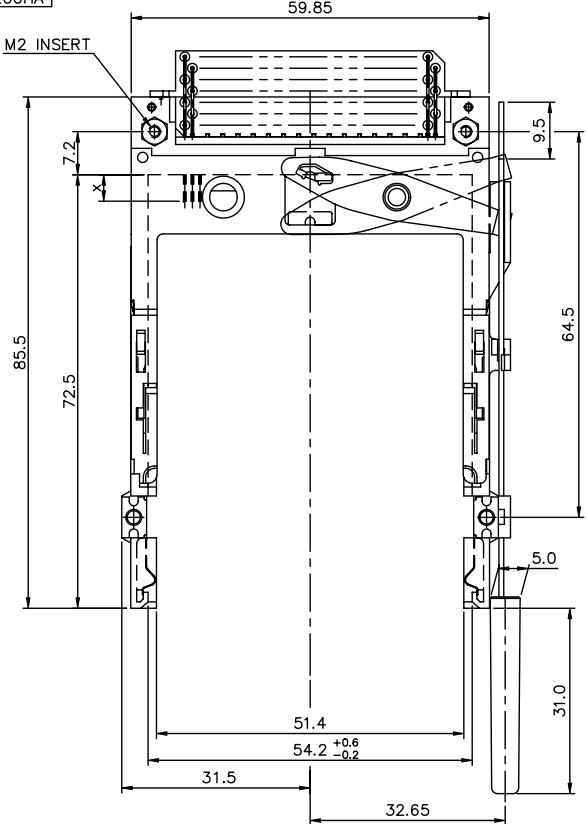
- NOTES:
- EJECT FORCE : 3.5 Kg MAX.
 - EJECT TRAVEL: 8.0mm
 - MATERIAL
 - HEADER ASS'Y :
 PLASTIC : HOUSING ...LCP UL94V-0 NATURAL
 : LOCATOR ...G.F. 6/6 NYLON UL94-VO BLACK
 PIN : COPPER ALLOY
 - EJECT MECHANISM ASS'Y :
 PLASTIC : GUIDE: POLYPHTHARAMID UL94V-0 BLACK
 : BUTTON: POLYPHTHARAMID UL94V-0 BLACK
 PLATE : STAINLESS
 EMI CONTACT: PHOSPHOR BRONZE
 - FINISH (PIN)
 UNDER PLATING : 0.5 μm MIN. Ni
 CONTACT AREA : 0.1 μm MIN. GOLD OVER 0.5 μm MIN. Pd-Ni
 SOLDER TAIL : 2.5 μm MIN. Sn-Pb

4.25±0.1	3.5±0.1	5.0±0.1
OTHERS	36,67	1,17,34,35,51,68



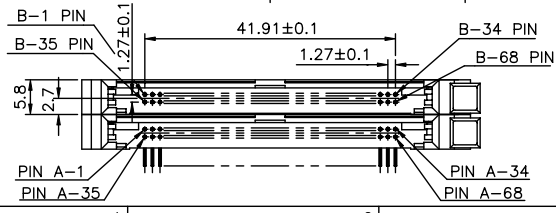
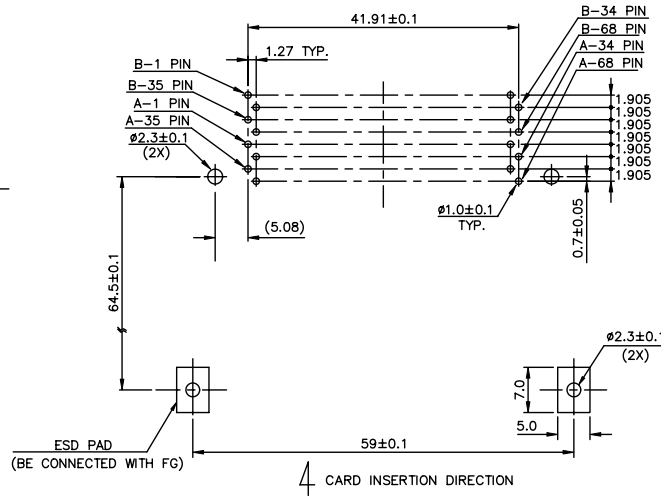
mat'l code		tolerance unless otherwise specified		CUSTOMER COPY		 ELECTRONICS FCI	
rev.	ecn no.	dr	date	linear	±0.30	projection	title
D				angles	± 2°		DOUBLE DECK R/A EJECTOR TYPE 1/2/3
				dr	WENDY CHEN 01/03/01	unit	product family : PCMCIA
				engr	LEIF SHEN 01/03/01	mm/inch	code
				chr	JOSEPH HSA 01/03/01	scale	size
				app	JOSEPH HSA 01/03/01	1.5:1	dwg no.
sheet	revision						A3
index	sheet						52360
							code
							TWN
							sheet
							3 of

PRODUCT NO.
52360-200HA



- NOTES:
- EJECT FORCE : 3.5 Kg MAX.
 - EJECT TRAVEL: 8.0mm
 - MATERIAL
 - HEADER ASS'Y :
PLASTIC : HOUSING ...LCP UL94V-0 NATURAL
: LOCATOR ...G.F. 6/6 NYLON UL94-VO BLACK
PIN : COPPER ALLOY
 - EJECT MECHANISM ASS'Y :
PLASTIC : GUIDE: POLYPHTHARAMID UL94V-0 BLACK
: PUSH ROD: POLYPHTHARAMID UL94V-0 BLACK
PLATE : STAINLESS
EMI CONTACT: PHOSPHOR BRONZE
 - FINISH (PIN)
UNDER PLATING : 0.5 μm MIN. Ni
CONTACT AREA : 0.1 μm MIN. GOLD OVER 0.5 μm MIN. Pd-Ni
SOLDER TAIL : 2.5 μm MIN. Sn-Pb

4.25±0.1	3.5±0.1	5.0±0.1
OTHERS	36,67	1,17,34,35,51,68



mat'l code		tolerance unless otherwise specified		CUSTOMER COPY		ELECTRONICS	
rev.	ecn no.	dr	date	linear	±0.30	projection	title
D				angles	± 2°	⊕	DOUBLE DECK R/A EJECTOR TYPE 1/2/3
				dr	WENDY CHEN/01/14/00	unit	product family : PCMCIA
				engr	LIEF SHEN /01/14/00	mm/inch	code
				chr	JOSEPH HSA /01/14/00	scale	size
				appd	LELAND WANG/01/14/00	1.5:1	dwg no.
sheet	revision						52360
index	sheet						2 of 2

PDM: Rev:D STATUS Released Printed: Oct 12, 2010

All rights strictly reserved. Reproduction or issue to third parties in any form or by any means, electronic or mechanical, including photocopying, recording, or by any information storage and retrieval system, is not permitted without written authority from the proprietor. Copyright © 2010 FCI Electronics by FCI Electronics.