

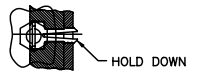
DESCRIPTION: ABOVE AND BELOW P.C.B., DECK AND PUSH-ROD LOCATION ARE AS VIEWED BY USER.

PRODUCT NO. 92882-XXXX NOTE ⑥	PCB SIDE	PUSH ROD LOCATION	SOLDER TAIL ⑤	STAND-OFF HEIGHT DIM "L"	EJ. HEADER ASSY 92856-XXX ④	EJ. MECHANISM ASSY 94307-XXXX ⑥	DIMENSION S	MOUNTING STYLE TO PCB AND PUSH-ROD LOCATION	
000CA	ABOVE	RIGHT	R/A	0.0	000	00CA	13.0		
000CH	ABOVE	RIGHT	R/A	0.0	000	00CH	13.0		
000DA	ABOVE	RIGHT	R/A	0.0	000	00DA	15.6		
001CA	ABOVE	RIGHT	SMT-STG	0.0	001	00CA	13.0		
002CA	ABOVE	RIGHT	SMT-IL	0.0	002	00CA			
020CA	ABOVE	RIGHT	R/A	2.0	040	02CA			
040CA	ABOVE	RIGHT	R/A	4.0	010	04CA			
050CA	ABOVE	RIGHT	R/A	5.0	020	05CA			
070CA	ABOVE	RIGHT	R/A	7.0	070	07CA			
100CA	ABOVE	LEFT	R/A	0.0	000	10CA			
101CA	ABOVE	LEFT	SMT-STG	0.0	001	10CA			
102CA	ABOVE	LEFT	SMT-IL	0.0	002	10CA			
120CA	ABOVE	LEFT	R/A	2.0	040	12CA			
140CA	ABOVE	LEFT	R/A	4.0	010	14CA			
150CA	ABOVE	LEFT	R/A	5.0	020	15CA			
170CA	ABOVE	LEFT	R/A	7.0	070	17CA			
500CA	BELOW	RIGHT	R/A	0.0	500	10CA			
501CA	BELOW	RIGHT	SMT-STG	0.0	501	10CA			
502CA	BELOW	RIGHT	SMT-IL	0.0	502	10CA			
520CA	BELOW	RIGHT	R/A	2.0	540	12CA			
540CA	BELOW	RIGHT	R/A	4.0	510	14CA			
550CA	BELOW	RIGHT	R/A	5.0	520	15CA			
600CA	BELOW	LEFT	R/A	0.0	500	00CA			
601CA	BELOW	LEFT	SMT-STG	0.0	501	00CA			
602CA	BELOW	LEFT	SMT-IL	0.0	502	00CA			
620CA	BELOW	LEFT	R/A	2.0	540	02CA			
640CA	BELOW	LEFT	R/A	4.0	510	04CA			
650CA	BELOW	LEFT	R/A	5.0	520	05CA			

- NOTES:
- MATERIAL:
 - 1.1 HEADER ASSY:
 - PLASTIC HOUSING: LCP UL94V-0 BLACK - ABOVE PCB
 - LCP UL94V-0 NATURAL (WHITE) - BELOW PCB
 - PIN: PHOSPHOR BRONZE
 - 1.2 EJECT MECHANISM ASSY:
 - PLASTIC GUIDE: POLYPHTHARAMID UL94V-0 BLACK
 - PLASTIC PUSH-ROD BUTTON: POLYPHTHARAMID UL94V-0
 - COLOR -00CH BLACK
 - 000CH NATURAL
 - COVER PLATE, EJECT PLATE, LINK ARM, PUSH ROD: STAINLESS STEEL
 - EMI CONTACT: PHOSPHOR BRONZE
 - FINISH (PIN)
 - UNDER PLATING: 0.5um MIN Ni
 - CONTACT AREA: 0.1um MIN GOLD OVER
 - 0.5um MIN Pd-Ni
 - SOLDER TAIL: 2.5um MIN Sn-Pb

- RECOMMENDED HOLD DOWN - 2mm SCREWS (95121) AND NUTS (92869). RECOMMENDED SCREW TORQUE: 1.0 TO 1.5 MAX in-lbs. (1.2-1.7 cm-kgs).
- SOLDER TAIL KEY:
 - R/A = RIGHT ANGLE PIN-THROUGH-HOLE
 - SMT-STG = STAGGERED SURFACE MOUNT
 - SMT-IL = SURFACE MOUNT IN-LINE (SINGLE ROW)

⑥ ADD "H" TO PART NUMBER FOR OPTIONAL HOLD DOWN (2 PER ASSEMBLY IN EJECT MECHANISM).



③ DIM "x"

4.25±.1	3.5±.1	5.0±.1
OTHERS	36.67	1.17,34,35,51,66

mat'l. code		tolerances unless otherwise specified		CUSTOMER COPY		Electronics FCI www.fciconnect.com	
ltr	ecn no	dr	date	linear	projection	title	
A	S40055	LTS	3/15/94	.X±.3		EJECT HEADER ASSY WITH THREADED INSERTS	
B	V70117	RHG	2/17/97	.XX±.13		product family	MCS
C	T60452	RGD	10/14/98	.XXX±.051		size	dwg no
D	T00125	RGD	4/27/00	angles	0° ±2°	scale	1:1
E	V20517	LP	3/15/02	enrg	R.GRAPE	2/17/97	
				chr	D.BRANN	2/17/97	
				appd	D.BRANN	2/17/97	
sheet index	revision	E	E	E	E	E	E
		1	2	3	4	5	6

ACAD

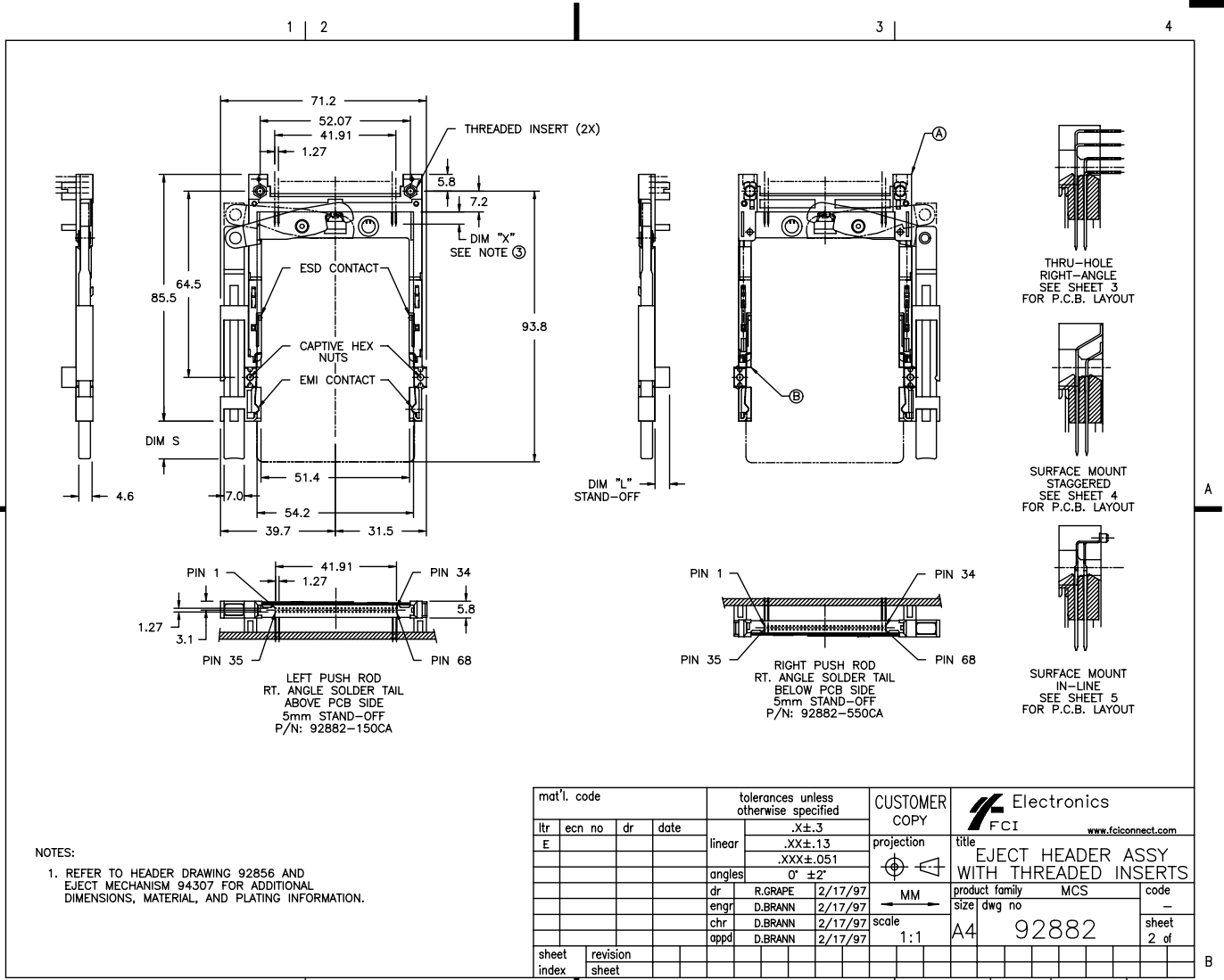
PDM: Rev:E

STATUS: Released
cage code: 22526
Printed: Oct 12, 2010

Tous droits strictement reserves. Reproduction ou communication a des tiers interdite sous quelque forme que ce soit sans autorisation ecrite du proprietaire. Propriete de c FCI. Droits de reproduction FCI.
 All rights strictly reserved. Reproduction or issue to third parties in any form whatever is not permitted without written authority from the proprietor. Property of FCI. Copyright FCI.

Tous droits strictement réservés. Reproduction ou communication à des tiers interdite sous quelque forme que ce soit sans autorisation écrite du propriétaire. Propriété de c FCI. Droits de reproduction FCI.

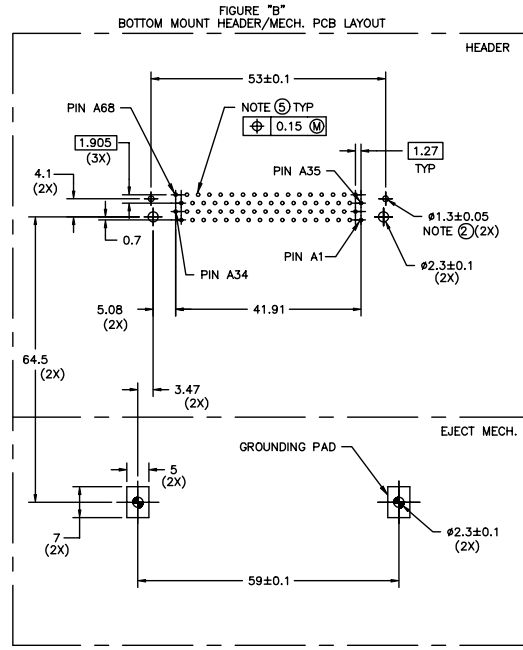
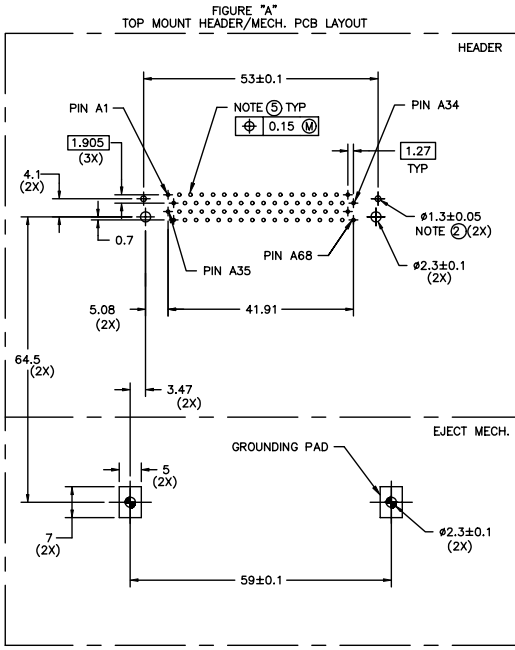
All rights strictly reserved. Reproduction or issue to third parties in any form whatever is not permitted without written authority from the proprietor. Property of FCI. Copyright FCI.



NOTES:
 1. REFER TO HEADER DRAWING 92856 AND EJECT MECHANISM 94307 FOR ADDITIONAL DIMENSIONS, MATERIAL, AND PLATING INFORMATION.

mat'l. code		tolerances unless otherwise specified		CUSTOMER COPY		Electronics www.fciconnect.com	
ltr	ecn no	dr	date	linear	projection	title	
E				.XX±.13		EJECT HEADER ASSY WITH THREADED INSERTS	
				.XXX±.051		product family	MCS
				angles	0° ±2'	size	dwg no
				dr	R.GRAPE 2/17/97	scale	1:1
				enqr	D.BRANN 2/17/97	A4	92882
				chr	D.BRANN 2/17/97		
				appd	D.BRANN 2/17/97		
sheet index	revision sheet						

Single Mount Right Angle



Tous droits strictement réservés. Reproduction ou communication à des tiers interdite sous quelque forme que ce soit sans autorisation écrite du propriétaire. Propriété de c FCI. Droits de reproduction FCI.
 All rights strictly reserved. Reproduction or issue to third parties in any form whatever is not permitted without written authority from the proprietor. Property of FCI. Copyright FCI.

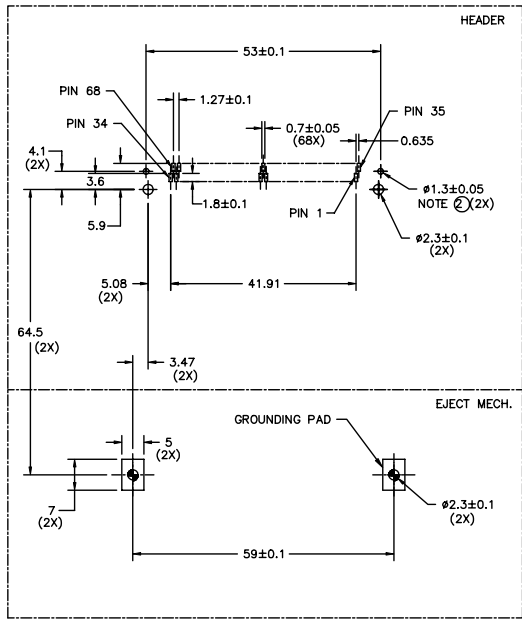
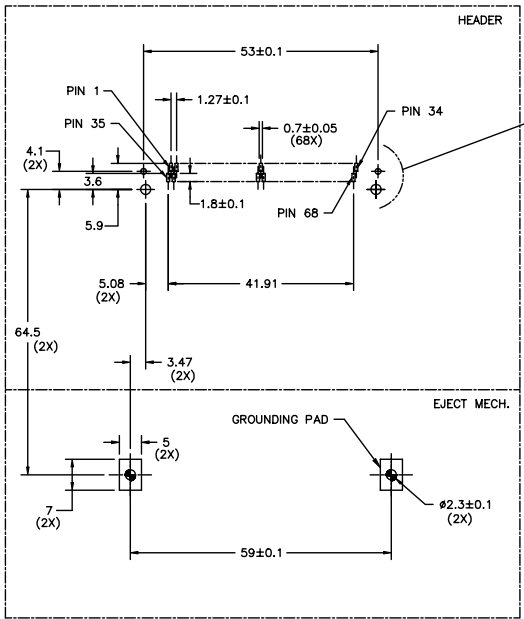
- NOTES:
- 1 ALL TOLERANCES ±0.15 UNLESS NOTED.
 - ② THIS HOLE REQUIRED FOR HEADERS WITH BOARD LOCATOR.
 - 3 KEEP-OUT ZONE FOR HEADERS W\ STAND-OFF OPTIONS SEE SHEET 6 FIGURE A.
 - 4 KEEP-OUT ZONE FOR HEADERS W\O STAND-OFF OPTIONS SEE SHEET 6 FIGURE B.
 - ⑤ RECOMMENDED DIAMETER IS #1.0. FOR PROCESSES USING PASTE REFLOW, HOLE MAY BE AS SMALL AS #0.79

mat'l. code		tolerances unless otherwise specified		CUSTOMER COPY		 FCI Electronics www.fciconnect.com	
ltr	ecn no	dr	date	linear	projection	title	
E					MM	EJECT HEADER ASSY WITH THREADED INSERTS	
				angles	←	product family	code
				dr		MCS	-
				enqr	R.GRAPE 2/17/97	size	sheet
				chr	D.BRANN 2/17/97	dwg no	3 of
				appd	D.BRANN 2/17/97	A4 92882	
sheet index	revision sheet				scale		
					1:1		

Surface Mount Staggered

FIGURE "A"
TOP MOUNT HEADER/MECH. PCB LAYOUT

FIGURE "B"
BOTTOM MOUNT HEADER/MECH. PCB LAYOUT



BOARD VIEW FROM CONNECTOR MOUNTED SIDE
TOP OF BOARD IN APPLICATION

BOARD VIEW FROM CONNECTOR MOUNTED SIDE
BOTTOM OF BOARD IN APPLICATION

- NOTES:
- 1 ALL TOLERANCES ± 0.15 UNLESS NOTED.
 - 2 THIS HOLE REQUIRED FOR HEADERS WITH BOARD LOCATOR.
 - 3 KEEP-OUT ZONE FOR HEADERS W/O STAND-OFF OPTIONS SEE SHEET 6 FIGURE B.

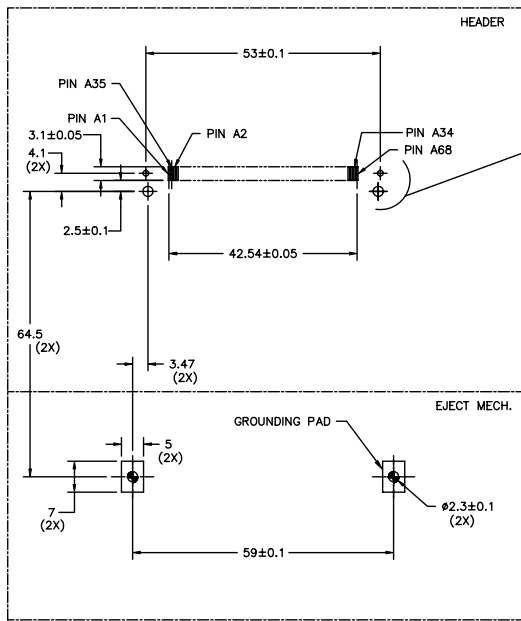
mat'l. code		tolerances unless otherwise specified		CUSTOMER COPY		 www.fciconnect.com	
ltr	ecn no	dr	date	linear	projection	title	
E				.X±.3	 MM	EJECT HEADER ASSY WITH THREADED INSERTS	
				.XXX±.051		product family	MCS
				angles	scale	size	dwg no
				0° ±2°	1:1	A4	92882
				dr			
				R.GRAPE			
				2/17/97			
				enqr			
				D.BRANN			
				2/17/97			
				chr			
				D.BRANN			
				2/17/97			
				appd			
				D.BRANN			
				2/17/97			
sheet index	revision sheet						

Tous droits strictement réservés. Reproduction ou communication à des tiers interdite sous quelque forme que ce soit sans autorisation écrite du propriétaire. Propriété de c FCI. Droits de reproduction FCI.

All rights strictly reserved. Reproduction or issue to third parties in any form whatever is not permitted without written authority from the proprietor. Property of FCI. Copyright FCI.

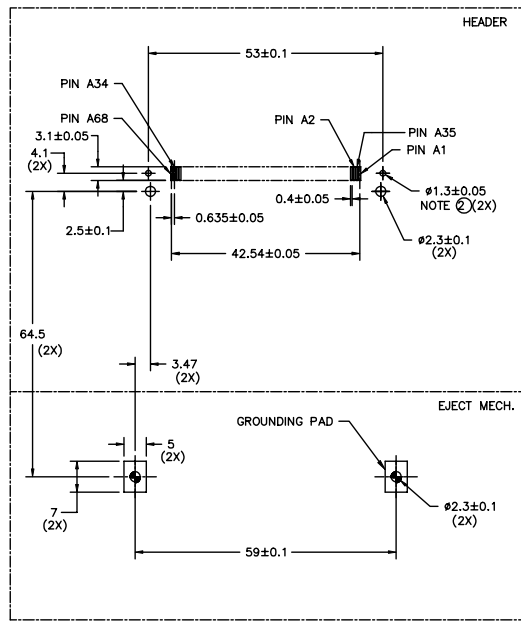
Surface Mount In-Line

FIGURE "A"
TOP MOUNT HEADER/MECH. PCB LAYOUT



BOARD VIEW FROM CONNECTOR MOUNTED SIDE
TOP OF BOARD IN APPLICATION

FIGURE "B"
BOTTOM MOUNT HEADER/MECH. PCB LAYOUT



BOARD VIEW FROM CONNECTOR MOUNTED SIDE
BOTTOM OF BOARD IN APPLICATION

NOTES:

- 1 ALL TOLERANCES ±0.15 UNLESS NOTED.
- 2 THIS HOLE REQUIRED FOR HEADERS WITH BOARD LOCATOR.
- 3 KEEP-OUT ZONE FOR HEADERS W\O STAND-OFF OPTIONS SEE SHEET 6 FIGURE B.

mat'l. code		tolerances unless otherwise specified		CUSTOMER COPY		 FCI Electronics www.fciconnect.com	
ltr	ecn no	dr	date	linear	projection	title	
E				.XX±.13	 MM	EJECT HEADER ASSY WITH THREADED INSERTS	
				.XXX±.051		product family	MCS
				angles	0° ±2°	size	dwg no
				dr	R.GRAPE	2/17/97	scale
				enqr	D.BRANN	2/17/97	1:1
				chr	D.BRANN	2/17/97	A4
				appd	D.BRANN	2/17/97	92882
sheet index	revision sheet						

Tous droits strictement réservés. Reproduction ou communication à des tiers interdite sous quelque forme que ce soit sans autorisation écrite du propriétaire. Propriété de c FCI. Droits de reproduction FCI.
 All rights strictly reserved. Reproduction or issue to third parties in any form whatever is not permitted without written authority from the proprietor. Property of FCI. Copyright FCI.

1 | 2 | 3 | 4

Board Keep Out Zone

FIGURE "A"
KEEP OUT ZONE FOR STANDOFF VERSION

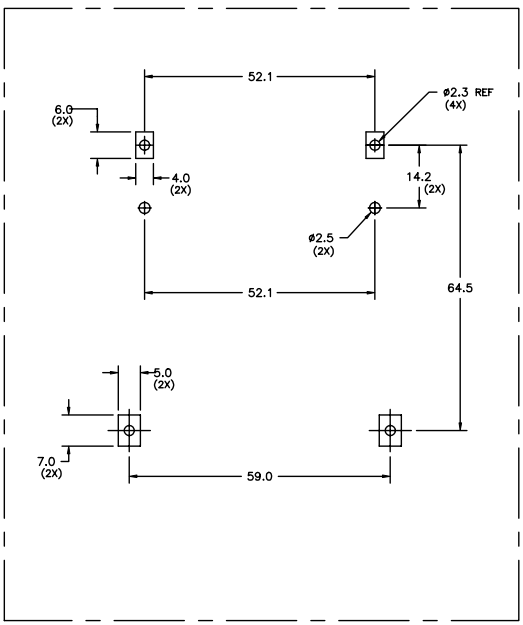
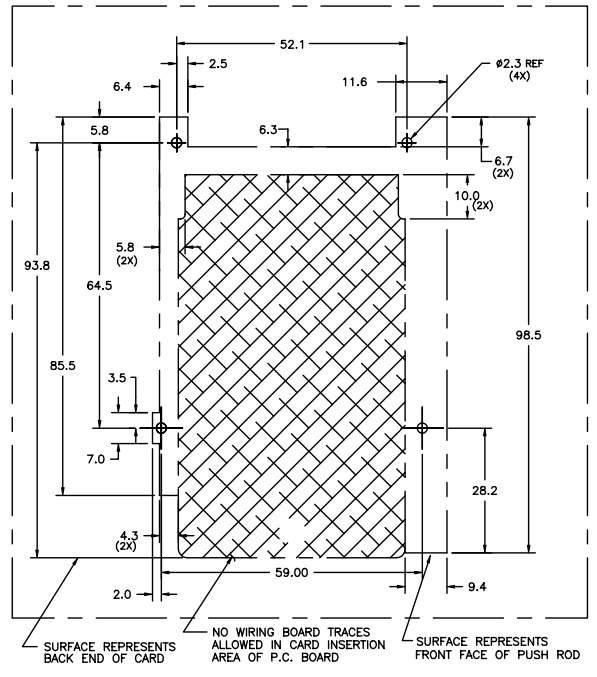


FIGURE "B" NOTE 1
KEEP OUT ZONE FOR NO STANDOFF VERSION
RIGHT HAND PUSHROD VERSION SHOWN
MIRROR IMAGE FOR LEFT HAND PUSHROD



NOTES:
 ① ALL DIMENSIONS SHOWN ARE NOMINAL AND DEFINE THE OUTSIDE SURFACES OF THE MECHANISM. A MINIMUM OF 0.25mm (0.010") CLEARANCE BETWEEN THE MECHANISM AND ANY COMPONENTS IS SUGGESTED.

mat'l. code		tolerances unless otherwise specified		CUSTOMER COPY		 www.fciconnect.com	
ltr	ecn no	dr	date	linear	.X±.3	projection	title
E				linear	.XXX±.051	 MM	EJECT HEADER ASSY WITH THREADED INSERTS
				angles	0° ±2'		product family
				dr	R.GRAPE 2/17/97	scale	1:1
				enqr	D.BRANN 2/17/97	size	A4
				chr	D.BRANN 2/17/97	dwg no	92882
				appd	D.BRANN 2/17/97	code	-
sheet	revision					product family	MCS
index	sheet					size	6 of

1 | 2 | 3 | 4

ACAD PDM: Rev:E cage code 22596 Released Printed: Oct 12, 2010