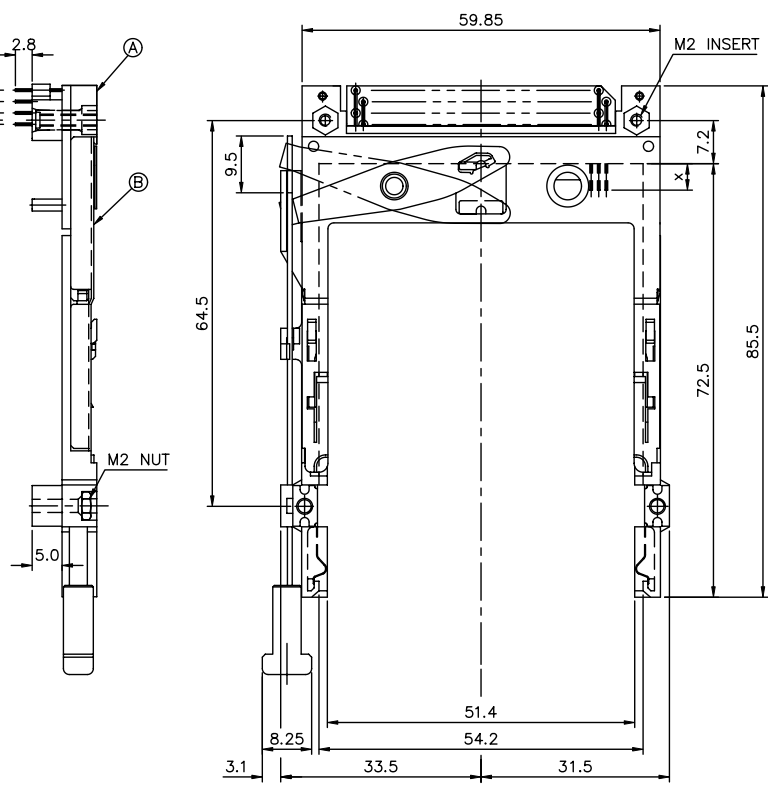


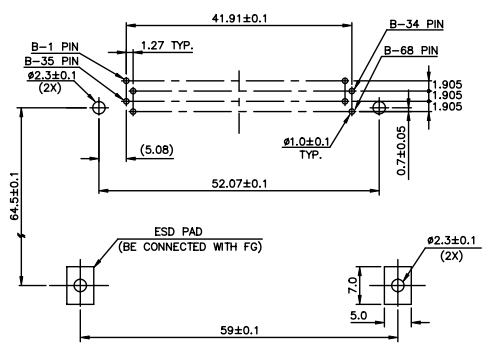
PRODUCT NO.
61573-150CA

All rights strictly reserved. Reproduction or issue to third parties in any form or by any means, electronic or mechanical, including photocopying, recording, or by any information storage and retrieval system, is not permitted without written authority from the proprietor.
 Tous droits strictement réservés. Reproduction ou communication à des tiers sous quelque forme que ce soit, électronique ou mécanique, y compris la photocopie, l'enregistrement ou par tout système de stockage et de récupération d'informations, n'est autorisée que par le propriétaire.
 Copyright © BERG ELECTRONICS BV

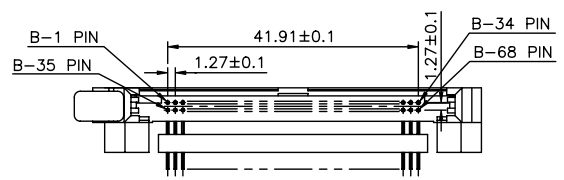


- NOTES:
- EJECT FORCE : 3.5 Kg MAX.
 - EJECT TRAVEL: 8.0mm
 - MATERIAL
 - PART (A) (HEADER ASS'Y)
 PLASTIC : HOUSING ...LCP UL94V-0 BLACK
 : LOCATOR ...G.F. 6/6 NYLON UL94-V0 BLACK
 PIN : PHOSPHOR BRONZE
 - PART (B) (EJECT MECHANISM ASS'Y)
 PLASTIC : GUIDE: POLYPHTHARAMID UL94V-0 BLACK
 : BUTTON: POLYPHTHARAMID UL94V-0 BLACK
 PLATE : STAINLESS
 EMI CONTACT: PHOSPHOR BRONZE
 - FINISH (PIN)
 UNDER PLATING : 0.5 μm MIN. Ni
 CONTACT AREA : 0.1 μm MIN. GOLD OVER 0.5 μm MIN. Pd-Ni
 SOLDER TAIL : 2.5 μm MIN. Sn-Pb

4.25±0.1	3.5±0.1	5.0±0.1
OTHERS	36,67	1,17,34,35,51,68



4 CARD INSERTION DIRECTION



USE THE FOLLOWING P/N FOR OFFICIAL ORDERING

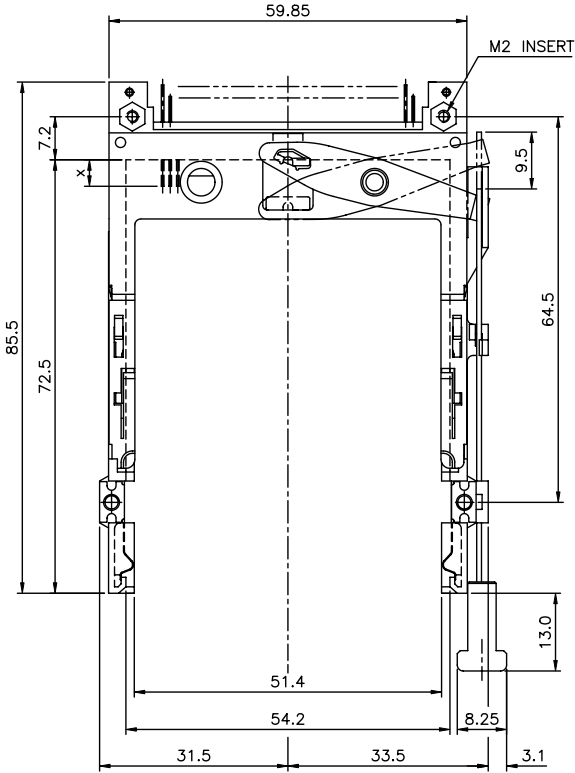
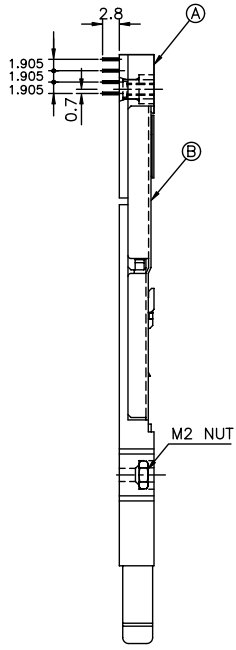
(B)	EJECT MECH ASS'Y	95627-15CA
(A)	HDR ASS'Y	92856-020
	DESCRIPTION	P/N

mat'l code		tolerance unless otherwise specified		CUSTOMER COPY		ELECTRONICS FCI	
rev.	ecn no.	dr	date	linear	±0.30	projection	title
B	I70083	C	M 03/03/97				NARROW BODY FRONT EJECTOR ASS'Y
C	I70304	W	L 07/20/97				TYPE 1/2/3 EJECTOR ASS'Y
D	T80430	W	L 09/24/98	angles	± 2°		
E	T80516	W	L 11/10/98	dr	SHIRLEY HSU 09/03/96	unit	product family : PCMCIA
F	T90015	W	L 01/14/99	enr	JOSEPH HSA 09/03/96	mm/inch	code
G	T90291	W	L 08/05/99	chr	JOSEPH HSA 09/03/96	scale	size
H	T00133	W	L 05/04/00	appd	JENN TSAO 09/03/96	1.5:1	dwg no.
sheet	revision	H	G	G	G	G	G
index	sheet	1	2	3	4	5	6

PDM: Rev:H STATUS Released Printed: Oct 12, 2010

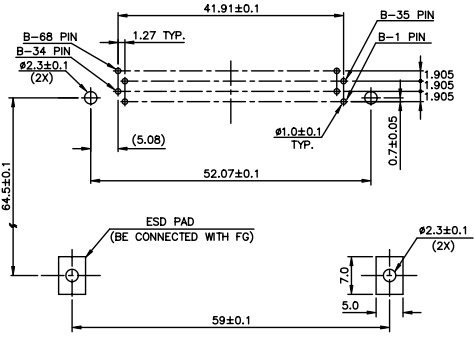
PRODUCT NO.
61573-600CA

1 | 2 | 3 | 4 | 5 | 6

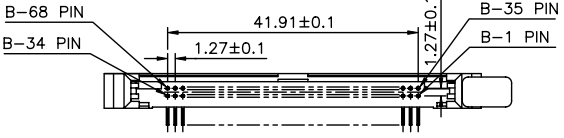


- NOTES:
- EJECT FORCE : 3.5 Kg MAX.
 - EJECT TRAVEL: 8.0mm
 - MATERIAL
 - 3.1 PART Ⓐ (HEADER ASS'Y)
PLASTIC : HOUSING ...LCP UL94V-0 BLACK
PIN : PHOSPHOR BRONZE
 - 3.2 PART Ⓑ (EJECT MECHANISM ASS'Y)
PLASTIC : GUIDE: POLYPHTHARAMID UL94V-0 BLACK
: BUTTON: POLYPHTHARAMID UL94V-0 BLACK
PLATE : STAINLESS
EMI CONTACT: PHOSPHOR BRONZE
 4. FINISH (PIN)
UNDER PLATING : 0.5 μm MIN. Ni
CONTACT AREA : 0.1 μm MIN. GOLD OVER 0.5 μm MIN. Pd-Ni
SOLDER TAIL : 2.5 μm MIN. Sn-Pb
 5. DIM "X"

4.25±0.1	3.5±0.1	5.0±0.1
OTHERS	36,67	1,17,34,35,51,68



4 CARD INSERTION DIRECTION



USE THE FOLLOWING P/N FOR OFFICIAL ORDERING

Ⓑ	EJECT MECH ASS'Y	95627-00CA
Ⓐ	HDR ASS'Y	92856-500
	DESCRIPTION	P/N

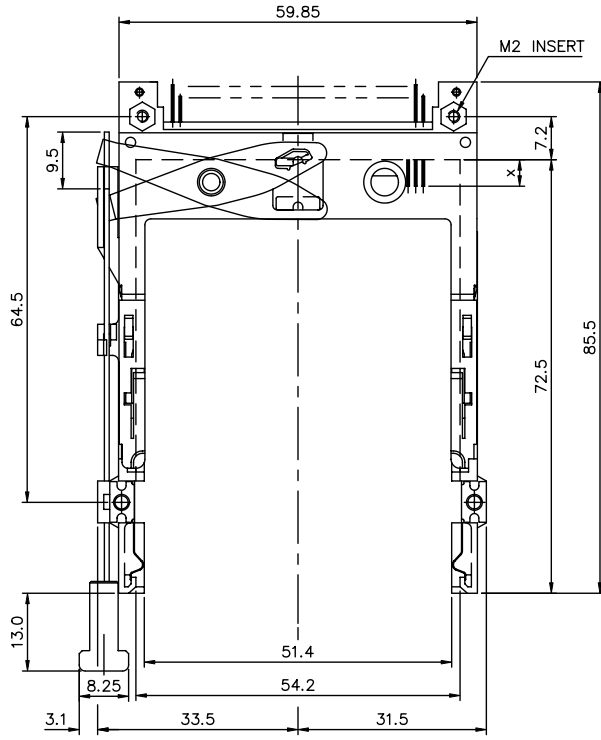
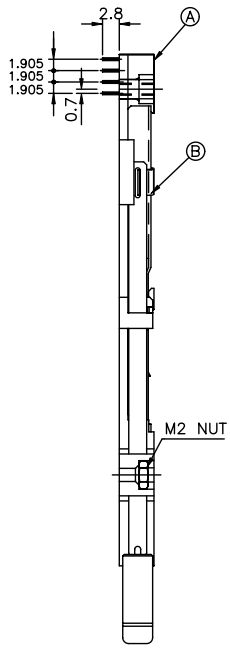
mat'l code		tolerance unless otherwise specified		CUSTOMER COPY		ELECTRONICS FCI	
rev.	ecn no.	dr	date	linear	±0.30	projection	title
G				angles	± 2°	⊕	NARROW BODY FRONT EJECT TYPE 1/2/3 EJECTOR ASS'Y
				dr	SHIRLEY HSJ 09/03/96	unit	product family : PCMCIA
				enrg	JOSEPH HSA 09/03/96	mm/inch	code
				chr	JOSEPH HSA 09/03/96	scale	size
				appd	JENN TSAO 09/03/96	1.5:1	dwg no.
sheet	revision						61573
index	sheet						2 of 2

PDM: Rev:H STATUS Released Printed: Oct 12, 2010

All rights strictly reserved. Reproduction or issue to third parties in any form or by any means, electronic or mechanical, including photocopying, recording, or by any information storage and retrieval system, is not permitted without written authority from the proprietor. Copyright © 2010 FCI Electronics by FCI Electronics.

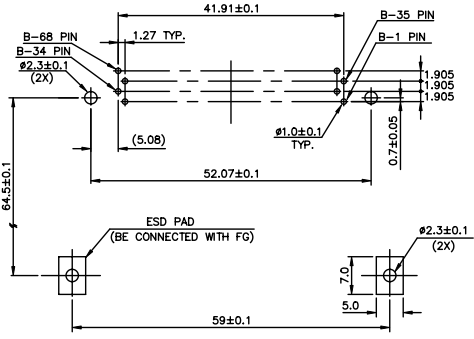
PRODUCT NO.
61573-500CA

1 | 2 | 3 | 4 | 5 | 6

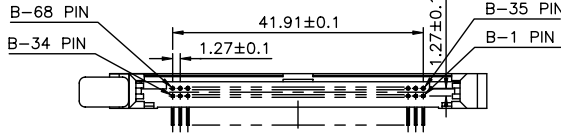


- NOTES:
- EJECT FORCE : 3.5 Kg MAX.
 - EJECT TRAVEL: 8.0mm
 - MATERIAL
 - PART A (HEADER ASS'Y)
PLASTIC : HOUSING ...LCP UL94V-0 BLACK
PIN : PHOSPHOR BRONZE
 - PART B (EJECT MECHANISM ASS'Y)
PLASTIC : GUIDE: POLYPHTHARAMID UL94V-0 BLACK
BUTTON: POLYPHTHARAMID UL94V-0 BLACK
PLATE : STAINLESS
EMI CONTACT: PHOSPHOR BRONZE
 - FINISH (PIN)
UNDER PLATING : 0.5 um MIN. Ni
CONTACT AREA : 0.1 um MIN. GOLD OVER 0.5 um MIN. Pd-Ni
SOLDER TAIL : 2.5 um MIN. Sn-Pb
 - DIM "X"

4.25±0.1	3.5±0.1	5.0±0.1
OTHERS	36,67	1,17,34,35,51,68



4 CARD INSERTION DIRECTION



USE THE FOLLOWING P/N FOR OFFICIAL ORDERING

B	EJECT MECH ASS'Y	95627-10CA
A	HDR ASS'Y	92856-500
	DESCRIPTION	P/N

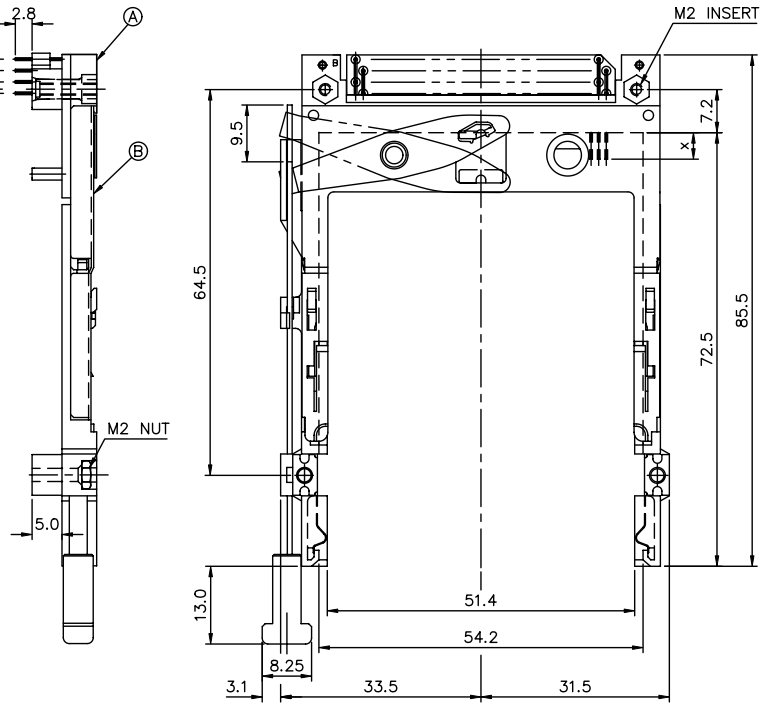
mat'l code		tolerance unless otherwise specified		CUSTOMER COPY		ELECTRONICS FCI	
rev.	ecn no.	dr	date	linear	±0.30	projection	title
G				angles	± 2°		NARROW BODY FRONT EJECT TYPE 1/2/3 EJECTOR ASS'Y
				dr	SHIRLEY HSU 09/03/96	unit	product family : PCMCIA
				enrg	JOSEPH HSA 09/03/96	mm/inch	code
				chr	JOSEPH HSA 09/03/96	scale	size
				appd	JENN TSAO 09/03/96	1.5:1	dwg no.
sheet	revision						61573
index	sheet						3 of 3

PDM: Rev:H STATUS Released Printed: Oct 12, 2010

1 | 2 | 3 | 4 | 5 | 6

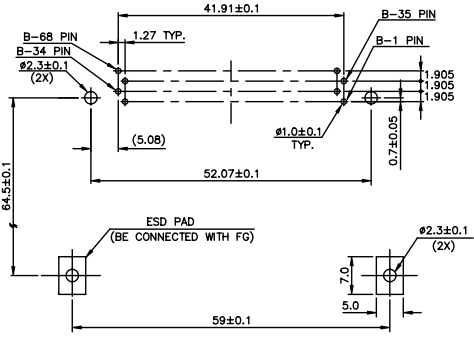
PRODUCT NO.
61573-550CA

All rights strictly reserved. Reproduction or issue to third parties in any form or by any means, electronic or mechanical, including photocopying, recording, or by any information storage and retrieval system, is not permitted without written authority from the proprietor.
 Tous droits strictement réservés. Reproduction ou communication à des tiers sous quelque forme que ce soit, électronique ou mécanique, y compris la photocopie, l'enregistrement ou toute système de stockage et de récupération d'informations, n'est autorisée qu'avec l'autorisation écrite du propriétaire.
 Copyright © BERG ELECTRONICS BV

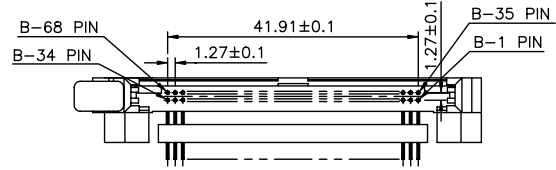


- NOTES:
- EJECT FORCE : 3.5 Kg MAX.
 - EJECT TRAVEL: 8.0mm
 - MATERIAL
 - PART (A) (HEADER ASS'Y)
 PLASTIC : HOUSING ...LCP UL94V-0 BLACK
 : LOCATOR ...G.F. 6/6 NYLON UL94-V0 BLACK
 PIN : PHOSPHOR BRONZE
 - PART (B) (EJECT MECHANISM ASS'Y)
 PLASTIC : GUIDE: POLYPHTHARAMID UL94V-0 BLACK
 : BUTTON: POLYPHTHARAMID UL94V-0 BLACK
 PLATE : STAINLESS
 EMI CONTACT: PHOSPHOR BRONZE
 - FINISH (PIN)
 UNDER PLATING : 0.5 um MIN. Ni
 CONTACT AREA : 0.1 um MIN. GOLD OVER 0.5 um MIN. Pd-Ni
 SOLDER TAIL : 2.5 um MIN. Sn-Pb
 - DIM "X"

4.25±0.1	3.5±0.1	5.0±0.1
OTHERS	36,67	1,17,34,35,51,68



4 CARD INSERTION DIRECTION

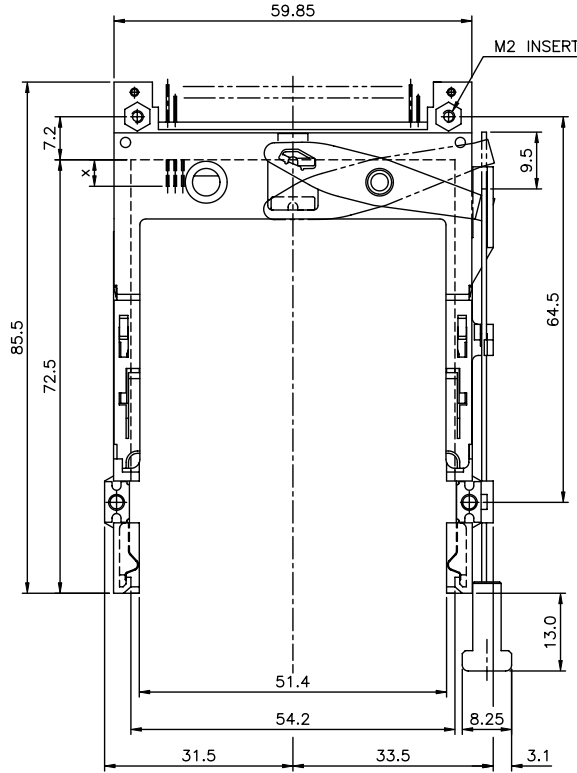
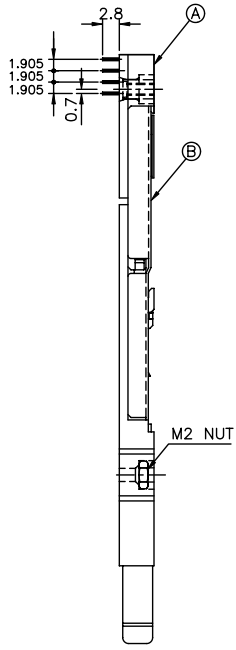


USE THE FOLLOWING P/N FOR OFFICIAL ORDERING

(B)	EJECT MECH ASS'Y	95627-15CA
(A)	HDR ASS'Y	92856-520
	DESCRIPTION	P/N

mat'l code		tolerance unless otherwise specified		CUSTOMER COPY		ELECTRONICS FCI	
rev.	ecn no.	dr	date	linear	±0.30	projection	title
G				angles	± 2°	mm/inch	NARROW BODY FRONT EJECTOR ASS'Y
				dr	WENDY CHEN 07/20/97	unit	TYPE 1/2/3 EJECTOR ASS'Y
				enqr	JOSEPH HSA 07/20/97	mm/inch	product family : PCMCIA
				chr	JOSEPH HSA 07/20/97	scale	size dwg no.
				appd	JENN TSAO 07/20/97	1.5:1	61573
sheet	revision						code
index	sheet						TWN
							sheet
							4 of

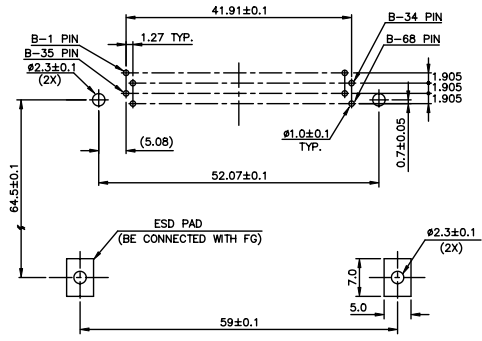
PRODUCT NO.
61573-000CA



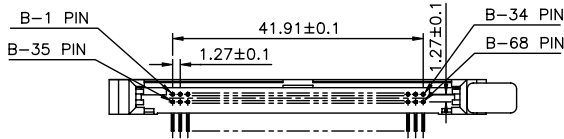
NOTES:

1. EJECT FORCE : 3.5 Kg MAX.
2. EJECT TRAVEL: 8.0mm
3. MATERIAL
- 3.1 PART (A) (HEADER ASS'Y)
PLASTIC : HOUSING ...LCP UL94V-0 BLACK
PIN : PHOSPHOR BRONZE
- 3.2 PART (B) (EJECT MECHANISM ASS'Y)
PLASTIC : GUIDE: POLYPHTHARAMID UL94V-0 BLACK
 : BUTTON: POLYPHTHARAMID UL94V-0 BLACK
PLATE : STAINLESS
EMI CONTACT: PHOSPHOR BRONZE
4. FINISH (PIN)
UNDER PLATING : 0.5 um MIN. Ni
CONTACT AREA : 0.1 um MIN. GOLD OVER 0.5 um MIN. Pd-Ni
SOLDER TAIL : 2.5 um MIN. Sn-Pb
5. DIM "X"

4.25±0.1	3.5±0.1	5.0±0.1
OTHERS	36,67	1,17,34,35,51,68



4 CARD INSERTION DIRECTION



USE THE FOLLOWING P/N FOR OFFICIAL ORDERING

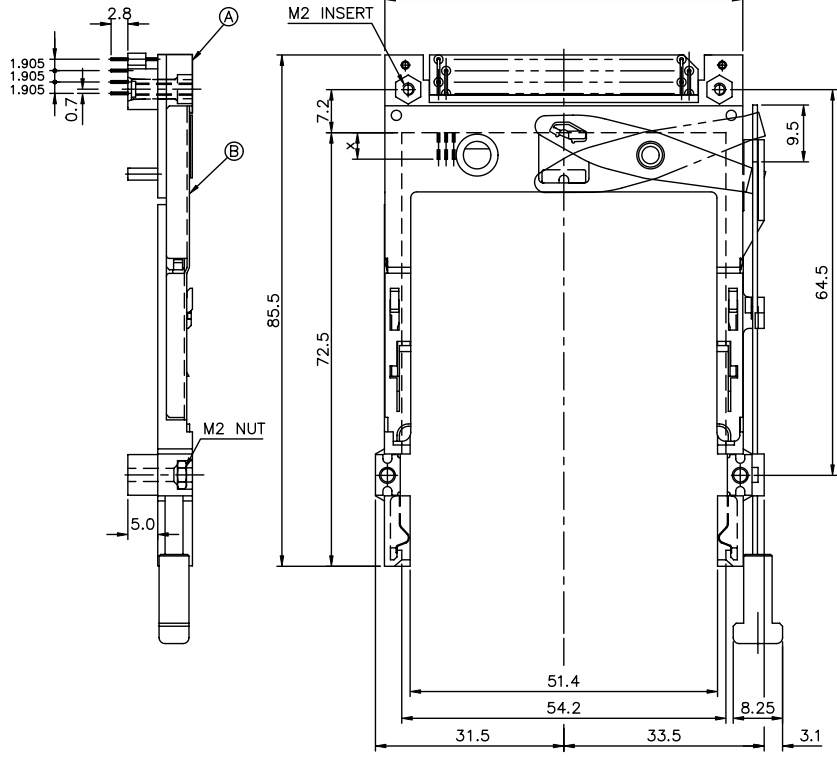
(B)	EJECT MECH ASS'Y	95627-00CA
(A)	HDR ASS'Y	92856-0000
	DESCRIPTION	P/N

mat'l code		tolerance unless otherwise specified		CUSTOMER COPY		ELECTRONICS FCI	
rev. G	ecn no. dr	date	linear	±0.30	projection	title NARROW BODY FRONT EJECT TYPE 1/2/3 EJECTOR ASS'Y	
			angles	± 2°		product family : PCMCIA	
			dr	WENDY CHEN/09/15/98	unit	code	
			enar	JOSEPH HSA/09/15/98	mm/inch	TWN	
			chr	JOSEPH HSA/09/15/98	scale	sheet	
			appd	JENN TSAO/09/15/98	1.5:1	5 of	
sheet index	revision						
	sheet						

PDM: Rev:H STATUS Released Printed: Oct 12, 2010

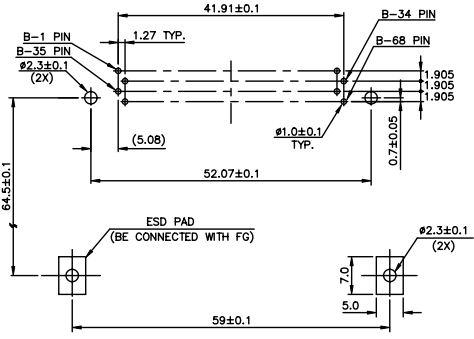
All rights strictly reserved. Reproduction or issue to third parties in any form or by any means, electronic or mechanical, including photocopying, recording, or by any information storage and retrieval system, is not permitted without written authority from the proprietor. Copyright © 2010 FCI Electronics by FCI Electronics.

PRODUCT NO.
61573-050CA



- NOTES:
- EJECT FORCE : 3.5 Kg MAX.
 - EJECT TRAVEL: 8.0mm
 - MATERIAL
 - PART A (HEADER ASS'Y)
PLASTIC : HOUSING ...LCP UL94V-0 BLACK
LOCATOR ...G.F. 6/6 NYLON UL94-V0 BLACK
PIN : PHOSPHOR BRONZE
 - PART B (EJECT MECHANISM ASS'Y)
PLASTIC : GUIDE: POLYPHTHARAMID UL94V-0 BLACK
BUTTON: POLYPHTHARAMID UL94V-0 BLACK
PLATE : STAINLESS
EMI CONTACT: PHOSPHOR BRONZE
 - FINISH (PIN)
UNDER PLATING : 0.5 μm MIN. Ni
CONTACT AREA : 0.1 μm MIN. GOLD OVER 0.5 μm MIN. Pd-Ni
SOLDER TAIL : 2.5 μm MIN. Sn-Pb
 - DIM "X"

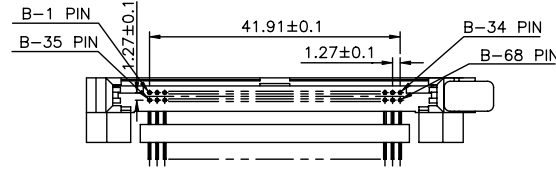
4.25±0.1	3.5±0.1	5.0±0.1
OTHERS	36,67	1,17,34,35,51,68



4 CARD INSERTION DIRECTION

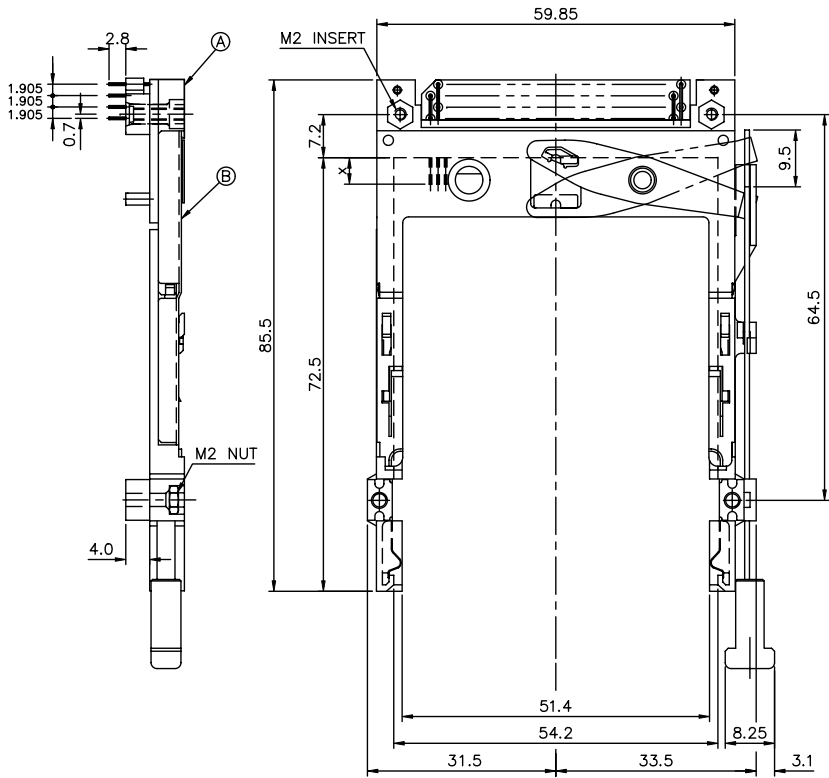
USE THE FOLLOWING P/N FOR OFFICIAL ORDERING

B	EJECT MECH ASS'Y	95627-05CA
A	HDR ASS'Y	92856-020
DESCRIPTION	P/N	



mat'l code	tolerance unless otherwise specified	CUSTOMER COPY	ELECTRONICS FCI	
rev. ecn no. dr date	linear	projection	title	
G	angles ± 2°	mm/inch	NARROW BODY FRONT EJECTOR ASS'Y	
dr WENDY CHEN 11/10/98	unit	scale	product family : PCMCIA	code
enqr JOSEPH HSA 11/10/98	1.5:1	A3	size dwg no.	TWN
chr JOSEPH HSA 11/10/98			61573	sheet 6 of 6
appd JENN TSAO 11/10/98				
sheet revision index sheet				

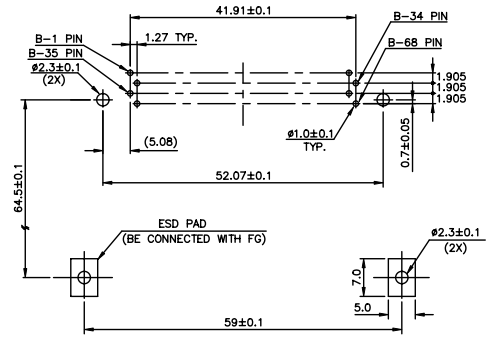
PRODUCT NO.
61573-040CA



NOTES:

- EJECT FORCE : 3.5 Kg MAX.
- EJECT TRAVEL: 8.0mm
- MATERIAL
 - PART (A) (HEADER ASS'Y)
PLASTIC : HOUSING ...LCP UL94V-0 BLACK
: LOCATOR ...G.F. 6/6 NYLON UL94-V0 BLACK
PIN : PHOSPHOR BRONZE
 - PART (B) (EJECT MECHANISM ASS'Y)
PLASTIC : GUIDE: POLYPHTHARAMID UL94V-0 BLACK
: BUTTON: POLYPHTHARAMID UL94V-0 BLACK
PLATE : STAINLESS
EMI CONTACT: PHOSPHOR BRONZE
- FINISH (PIN)
UNDER PLATING : 0.5 μm MIN. Ni
CONTACT AREA : 0.1 μm MIN. GOLD OVER 0.5 μm MIN. Pd-Ni
SOLDER TAIL : 2.5 μm MIN. Sn-Pb
- DIM "X"

4.25±0.1	3.5±0.1	5.0±0.1
OTHERS	36,67	1,17,34,35,51,68



4 CARD INSERTION DIRECTION

USE THE FOLLOWING P/N FOR OFFICIAL ORDERING

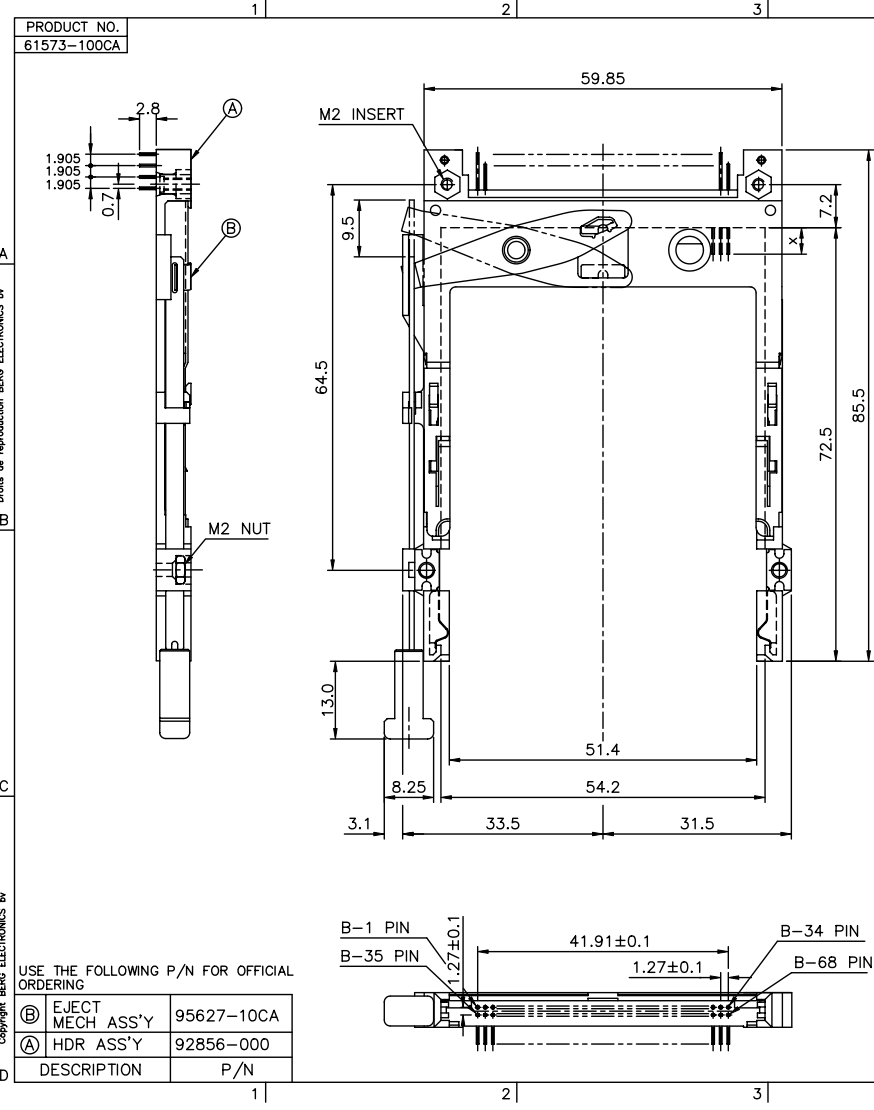
(B)	EJECT MECH ASS'Y	95627-04CA
(A)	HDR ASS'Y	92856-010
	DESCRIPTION	P/N

mat'l code		tolerance unless otherwise specified		CUSTOMER COPY		ELECTRONICS FCI	
rev.	ecn no.	dr	date	linear	±0.30	projection	title
G				angles	± 2°	mm/inch	NARROW BODY FRONT EJECTOR ASS'Y
				dr	WENDY CHEN 11/10/98	unit	TYPE 1/2/3 EJECTOR ASS'Y
				enrg	JOSEPH HSA 11/10/98	mm/inch	product family : PCMCIA
				chr	JOSEPH HSA 11/10/98	scale	size dwg no.
				appd	JENN TSAO 11/10/98	1.5:1	A3 61573
sheet	revision						code
index	sheet						TWN
							sheet
							7 of

All rights strictly reserved. Reproduction or issue to third parties in any form or by any means, electronic or mechanical, including photocopying, recording, or by any information storage and retrieval system, is not permitted without written authority from the proprietor. Copyright © 2010 FCI Electronics by FCI Electronics.

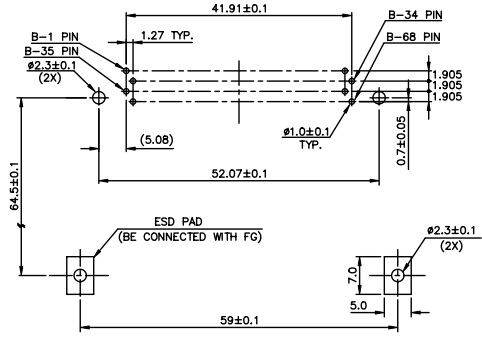
PRODUCT NO.
61573-100CA

All rights strictly reserved. Reproduction or issue to third parties in any form or by any means, without the prior written authorization of the proprietor. Copyright © 2010 FCI. FCI ELECTRONICS BV.



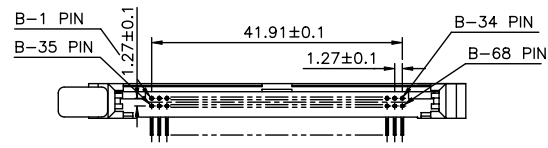
- NOTES:
- EJECT FORCE : 3.5 Kg MAX.
 - EJECT TRAVEL: 8.0mm
 - MATERIAL
 - PART Ⓐ (HEADER ASS'Y)
PLASTIC : HOUSING ...LCP UL94V-0 BLACK
PIN : COPPER ALLOY
 - PART Ⓑ (EJECT MECHANISM ASS'Y)
PLASTIC : GUIDE: POLYPHTHARAMID UL94V-0 BLACK
BUTTON: POLYPHTHARAMID UL94V-0 BLACK
PLATE : STAINLESS
EMI CONTACT: PHOSPHOR BRONZE
 - FINISH (PIN)
UNDER PLATING : 0.5 um MIN. Ni
CONTACT AREA : 0.1 um MIN. GOLD OVER 0.5 um MIN. Pd-Ni
SOLDER TAIL : 2.5 um MIN. Sn-Pb
 - DIM "X"

4.25±0.1	3.5±0.1	5.0±0.1
OTHERS	36,67	1,17,34,35,51,68



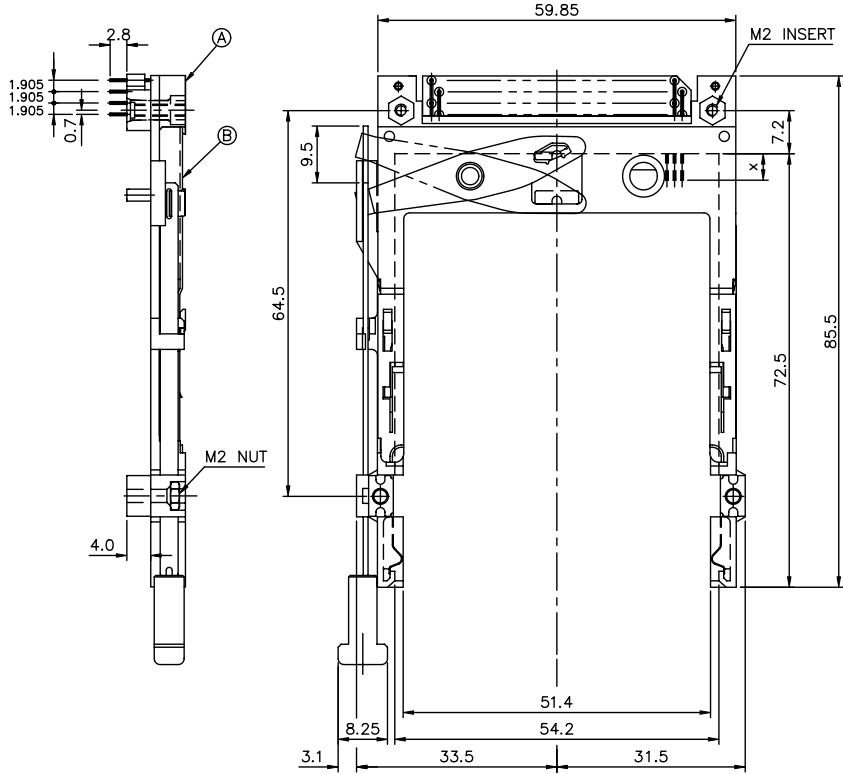
USE THE FOLLOWING P/N FOR OFFICIAL ORDERING

Ⓑ	EJECT MECH ASS'Y	95627-10CA
Ⓐ	HDR ASS'Y	92856-000
	DESCRIPTION	P/N



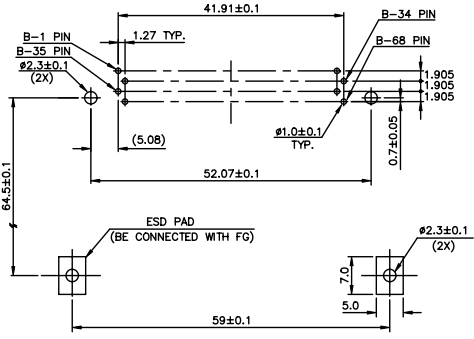
mat'l code		tolerance unless otherwise specified		CUSTOMER COPY		FCI ELECTRONICS	
rev.	ecn no.	dr	date	linear	±0.30	projection	title
G				angles	± 2°	⊕	NARROW BODY FRONT EJECT TYPE 1/2/3 EJECTOR ASS'Y
				dr	WENDY CHEN/08/02/99	unit	product family : PCMCIA
				enrg	JOSEPH HSA/08/02/99	mm/inch	code
				chr	JOSEPH HSA/08/02/99	scale	size
				appd	JENN TSAO/08/02/99	1.5:1	dwg no.
sheet	revision						61573
index	sheet						8 of

PRODUCT NO.
61573-140CA

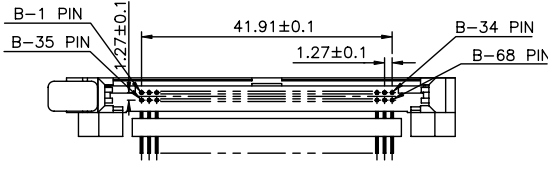


- NOTES:
- EJECT FORCE : 3.5 Kg MAX.
 - EJECT TRAVEL: 8.0mm
 - MATERIAL
 - PART (A) (HEADER ASS'Y)
PLASTIC : HOUSING ...LCP UL94V-0 BLACK
LOCATOR ...G.F. 6/6 NYLON UL94-V0 BLACK
PIN : COPPER ALLOY
 - PART (B) (EJECT MECHANISM ASS'Y)
PLASTIC : GUIDE: POLYPHTHARAMID UL94V-0 BLACK
BUTTON: POLYPHTHARAMID UL94V-0 BLACK
PLATE : STAINLESS
EMI CONTACT: PHOSPHOR BRONZE
 - FINISH (PIN)
UNDER PLATING : 0.5 μm MIN. Ni
CONTACT AREA : 0.1 μm MIN. GOLD OVER 0.5 μm MIN. Pd-Ni
SOLDER TAIL : 2.5 μm MIN. Sn-Pb
 - DIM "X"

4.25±0.1	3.5±0.1	5.0±0.1
OTHERS	36,67	1,17,34,35,51,68



4 CARD INSERTION DIRECTION



USE THE FOLLOWING P/N FOR OFFICIAL ORDERING

(B)	EJECT MECH ASS'Y	95627-14CA
(A)	HDR ASS'Y	92856-010
	DESCRIPTION	P/N

mat'l code		tolerance unless otherwise specified		CUSTOMER COPY		ELECTRONICS	
rev. ecn no. dr date		±0.30		projection		FCI	
H		linear		title		NARROW BODY FRONT EJECTOR ASS'Y	
		angles ± 2°		product family : PCMCIA		code	
		dr WENDY CHEN/05/04/00		size		TWN	
		enrg JOSEPH HSA/05/04/00		dwg no.		sheet	
		chr JOSEPH HSA/05/04/00		scale		9 of	
		app JOSEPH HSA/05/04/00		1.5:1		A3	
sheet revision				61573			
index sheet							