



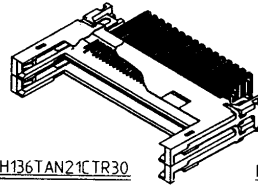
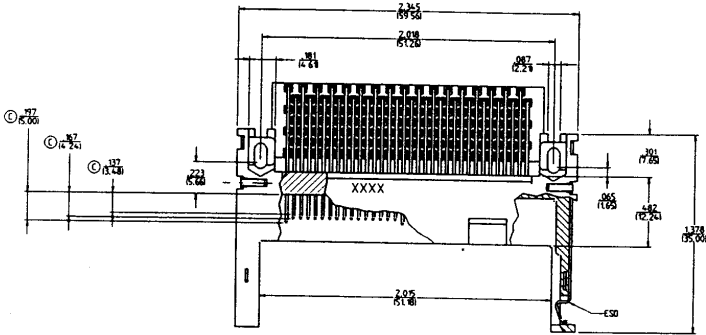








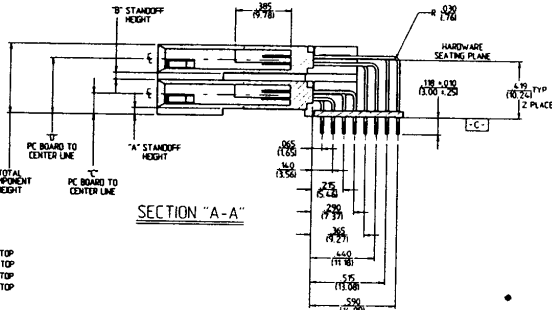
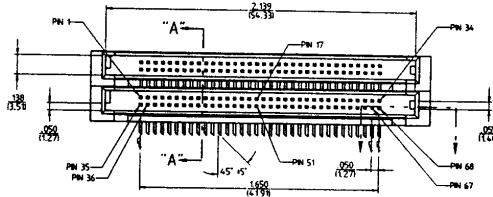
PART DESCRIPTION	DIM "A" STANDOFF HEIGHT	DIM "B" STANDOFF HEIGHT	DIM "C" PC BOARD TO CENTER LINE	DIM "D" PC BOARD TO CENTER LINE	TOTAL COMPONENT HEIGHT
MCH136TAN21CTR30	.054 (1.37)	.047 (1.20)	.146 (3.70)	.397 (10.06)	.495 (12.57)



MCH136TAN21CTR30

MCH 136 T A N 21 C TR30

- MCH - MEMORY CARD HEADER
- NUMBER OF CONTACTS
- MOUNTING STYLE
- T - TOP MOUNT, RIGHT ANGLE
- CONTACT STYLE
- A = THROUGH HOLE
- HEADER STYLE
- N = NO EJECT
- CONTACT PLATING
- TR30
- ESD/SOLDER RETENT CLIP OPTION
- C = ESD, NO SOLDER RETENT CLIP
- INSULATOR BODY STYLE
- Z1 - STANDARD STACKED PROFILE



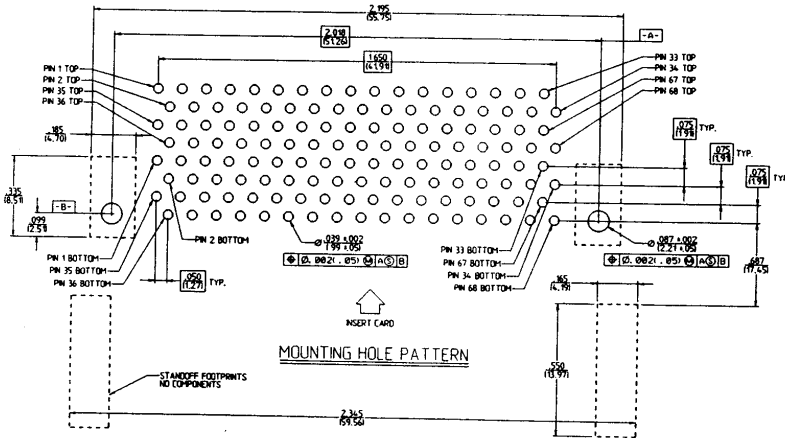
SECTION "A-A"

**HEADER:**

- Power Pins, .197" (5.0mm) long: 1, 17, 34, 35, 51, 68
- Signal Pins, .167" (4.24mm) long: 2-16, 18-33, 37-50, 52-66
- Detect Pins, .137" (3.48mm) long: 36, 67

**NOTES:**

1. All dimensions are in inches. Metric equivalents in parentheses are for reference only.
2. All parts packaged in trays unless requested.
3. Available in bottom mount.
4. Acquire size M2(0-80 UNC) screws for hold down hardware.
5. Plated thru holes shall be linked to the PCB grounding path.



CUSTOMER DRAWING

**Robinson Nugent** 812/945-0211  
812/945-0805 FAX

**MEMPAK MCH136TAN21CTR30**  
136 Position, Top Mount, Right Angle Header  
No Eject, with ESD, No Retent Clip, Stacked

**RN MEMPAK**