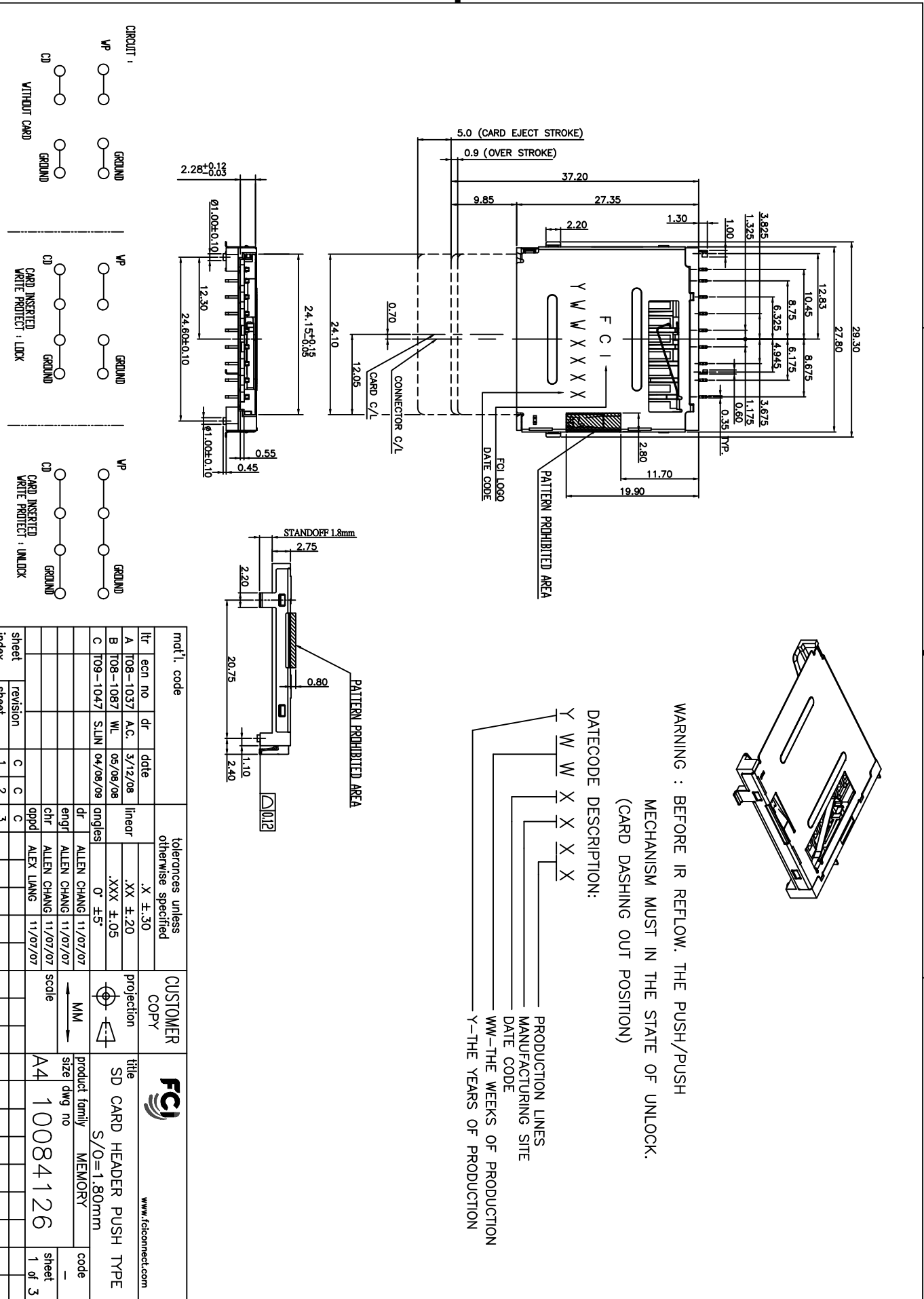




B

A



1 | 2

3 |

4

mat'l code		tolerances unless otherwise specified		CUSTOMER COPY		FCI	
itr	ecn no	dr	ddte	linear	projection	title	www.fciconnect.com
A	T08-1037	A.C.	3/12/08	.XX ±.20	MM	SD CARD HEADER PUSH TYPE	
B	T08-1087	WL	05/08/08	.XXX ±.05	MM	S/O=1.80mm	
C	T09-1047	S.LIN	04/08/09	0° ±5°	MM	MEMORY	
sheet		revision	C	1	C	2	3
Index		sheet	C	1	C	2	3

ACAD

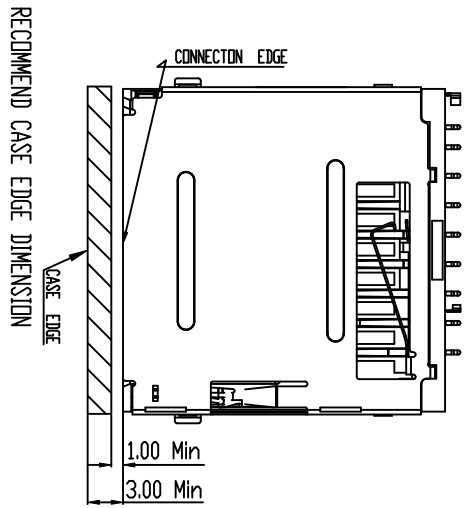
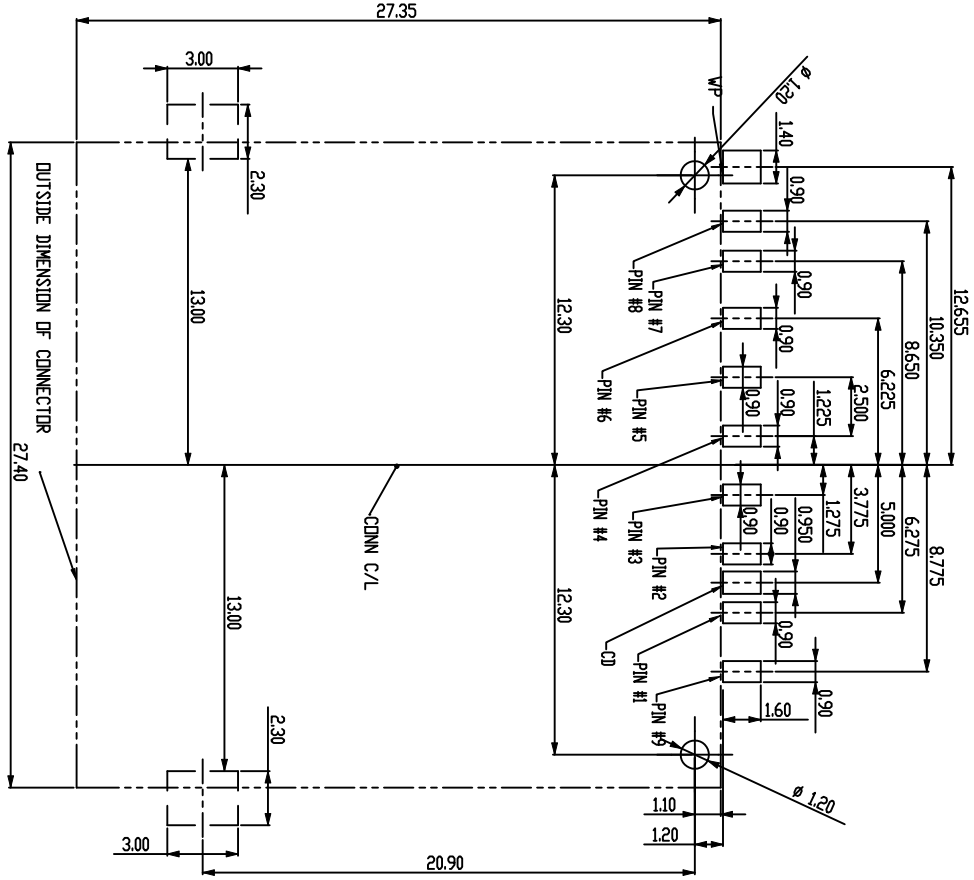
code code
22526

4

B

A

CUSTOMERIZED PCB LAYOUT
 GENERAL TOLERANCE $\pm 0.05\text{mm}$



PIN NO.	DESCRIPTION
#09	DAT 2
#08	DAT 1
#07	DAT 0
#06	VSS 2
#05	CLK
#04	VDD
#03	VSS
#02	CMD
#01	DAT 3

mat'l code	tolerances unless otherwise specified	CUSTOMER COPY	FCI	www.fciconnect.com
itr	linear	projection	MM	title
ecn no	.XX \pm .20	MM	product family	SD CARD HEADER PUSH TYPE
dr	.XXX \pm .05	MM	size	S/O=1.80mm
ddte	0° \pm 5°	scale	dwg no	MEMORY
			11/07/07	code
			11/07/07	code
			11/07/07	code
			11/07/07	code
			11/07/07	code
sheet	revision			code
Index	sheet			sheet
				2 of

1 | 2

1 | 2

3 |

ACAD

3 |

code code
22526

4



1 | 2

3 |

4

NOTES :

1. MATERIAL :
INSULATOR : HIGH TEMP THERMOPLASTIC,UL 94V-0, COLOR : BLACK
NO REGRIND ADDED.
SIGNAL AND CD CONTACTS : COPPER ALLOY.
WP CONTACTS : COPPER ALLOY.
SHIELD: STAINLESS STEEL .
SPRING: STAINLESS STEEL.
LOCK PIN: STAINLESS STEEL.
2. PLATING SPEC:
CONTACT: 50u" Min NICKEL UNDERPLATED ALL OVER,
100u" Min MATTE TIN ON SOLDER TAIL AREA,
SELECTIVE GOLD PLATED ON CONTACT AREA.
3. PRODUCT SPECIFICATION: GS-12-554.
4. PACKAGING SPECIFICATION: GS-14-1278.
5. MULTIMEDIA CARD COMPATIBLE.
6. WP: WRITE PROTECT
CD: CARD DETECT INDICATION
7. LEAD FREE NOTES:
7.1. THE HOUSING WILL WITHSTAND EXPOSURE TO 260°C PEAK
TEMPERATURE FOR 10 SECONDS IN A CONVECTION, IR OR VAPOR
PHASE REFLOW OVEN.
7.2. THIS PRODUCT (10084126-00XLF) MEETS THE EUROPEAN UNION
DIRECTIVE AS DESCRIBED IN GS-22-008.
8. THE PACKAGE IS TRAY.

9. PART NUMBER DESCRIPTIONS:

10084126- 0 0 X LF

LF : LEAD FREE.

CONTACT PLATING :
1 : GOLD FLASH OVER NI.
2 : 10u" Au OVER NI.

1 | 2

3 |

4

mat'l code		tolerances unless otherwise specified		CUSTOMER COPY		FCI		www.fciconnect.com	
ltr	ecn no	dr	ddte	linear	.X ±.30	projection	title	SD CARD HEADER PUSH TYPE	code
C					.XX ±.25	MM	S/O=1.80mm	MEMORY	-
				angles	0° ±5°	scale	product family	A4	sheet
				dr	ALLEN CHANG 11/07/07		size	10084126	3 of
				engr	ALLEN CHANG 11/07/07		dwg no		
				chr	ALLEN CHANG 11/07/07				
				appd	ALEX LIANG 11/07/07				
sheet		revision							
index		sheet							

ACAD

code code
22526