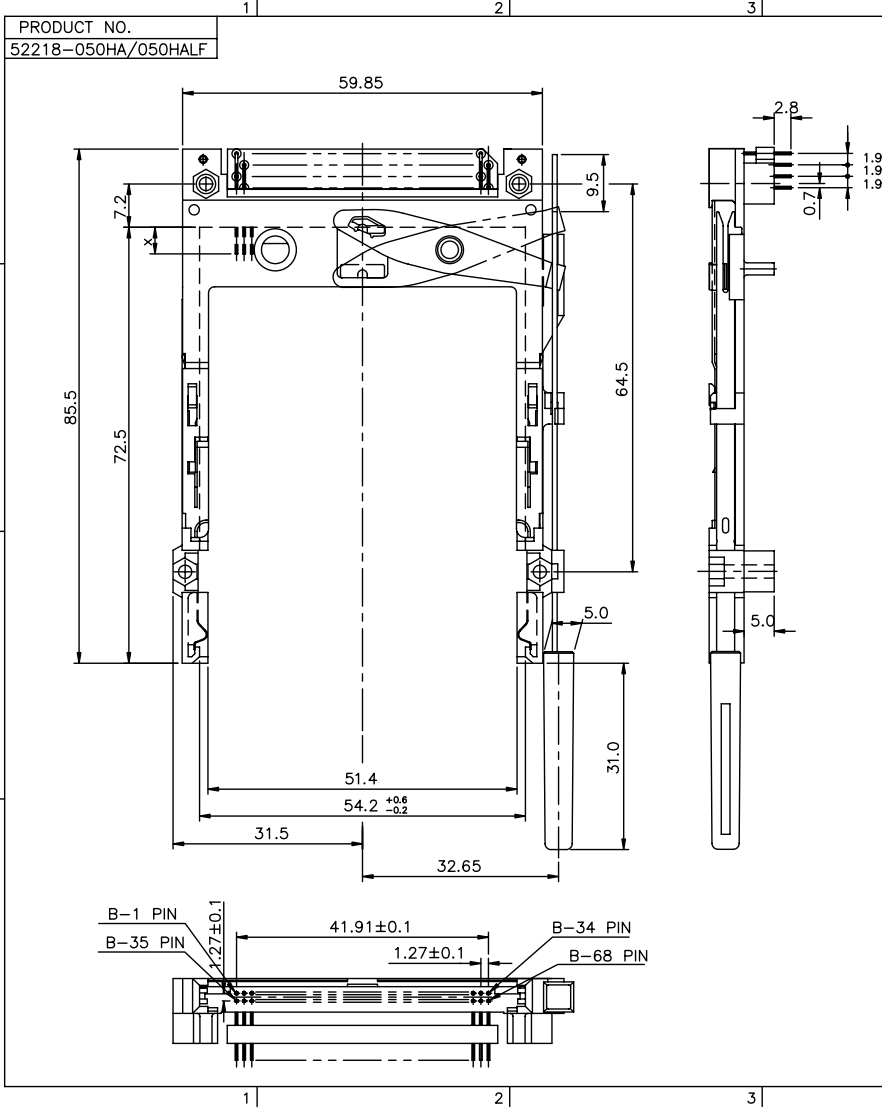


Tous droits strictement réservés. Reproduction ou communication à des tiers sans autorisation écrite du propriétaire. FCI ELECTRONICS. Droits de reproduction BERG ELECTRONICS bv

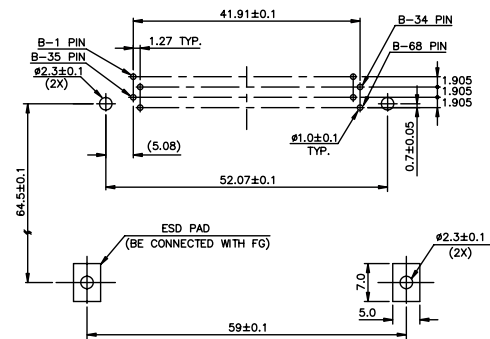
All rights strictly reserved. Reproduction or issue to third parties in any form without the written authority from the proprietor. FCI ELECTRONICS. Copyright BERG ELECTRONICS bv



- NOTES:
- EJECT FORCE : 3.5 Kg MAX.
  - EJECT TRAVEL: 8.0mm
  - MATERIAL
    - HEADER ASS'Y :
      - PLASTIC : HOUSING ...LCP UL94V-0 BLACK
      - LOCATOR ...G.F. 6/6 NYLON UL94-V0 BLACK
      - PIN : COPPER ALLOY
    - EJECT MECHANISM ASS'Y :
      - PLASTIC : GUIDE: POLYPHTHARAMID UL94V-0 BLACK
      - PUSH BUTTON: POLYPHTHARAMID UL94V-0 BLACK
      - PLATE : STAINLESS
      - EMI CONTACT: PHOSPHOR BRONZE
  - FINISH (PIN)
    - UNDER PLATING : 0.5µm MIN. Ni
    - CONTACT AREA : 0.1µm MIN. GOLD OVER 0.5µm MIN. Pd-Ni
    - SOLDER TAIL (TIN LEAD OPTION): 2.5µm MIN. Sn-Pb
    - SOLDER TAIL (LEAD FREE OPTION): 2.5µm MIN. PURE TIN

DIM "X"	4.25±0.1	3.5±0.1	5.0±0.1
OTHERS	36,67	1,17,34,35,51,68	

- IF LEAD FREE P/N. THE HOUSING WILL WITHSTAND EXPOSURE TO 260°C PEAK TEMPERATURE FOR 10 SECONDS IN A WAVE SOLDER APPLICATION WITH A 1.00MM MINIMUM THICK CIRCUIT BOARD.
- LEAD FREE PRODUCT MEETS EUROPEAN UNION DIRECTIVES AND OTHER COUNTRY REGULATIONS AS DISCRIBLED IN GS-22-008
- IF LEAD FREE P/N. PACKAGING MEETS GS-14-920 SPECIFICATION

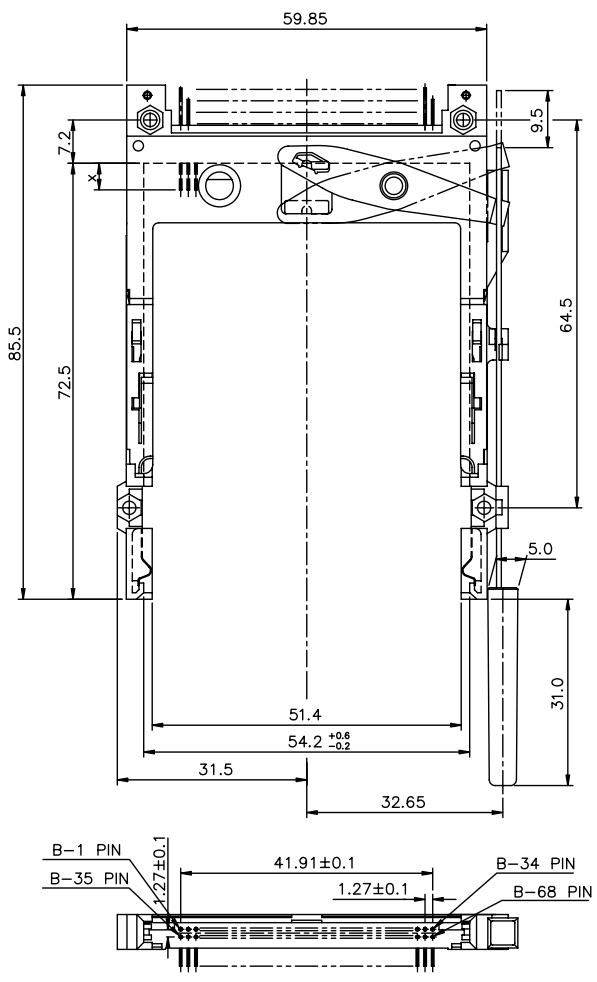


mat'l code		tolerance unless otherwise specified		CUSTOMER COPY		FCI		www.fciconnect.com	
rev.	ecn no.	dr	date	linear	±0.30	projection	title		
A	T90060	WL	02/16/99				NARROW BODY FRONT EJECT		
B	T10194	WL	07/13/91	angles	± 2°		TYPE 1/2/3 EJECTOR ASS'Y		
C	T20166	WL	06/27/92				product family		code
D	T03-0405	WL	09/17/93	dr	WENDY CHEN	01/21/99	unit		size
E	N04-0105	WB	11/26/94	enqr	LEIF SHEN	01/21/99	mm/inch		dwg no.
F	N04-0204	WB	07/12/95	chr	JOSEPH HSIA	01/21/99	scale		sheet
G	N06-0065	MZ	03/17/98	appd	JENN TSAO	01/21/99	1.5:1		1 of 4
sheet	revision	E	E	E	G				
index	sheet	1	2	3	4				

Tous droits strictement réservés. Reproduction ou communication à des tiers sans autorisation écrite du propriétaire. Copyright BERG ELECTRONICS S.A. Droits de reproduction BERG ELECTRONICS S.A.

All rights strictly reserved. Reproduction or issue to third parties in any form without written authority from the proprietor. Copyright BERG ELECTRONICS S.A.

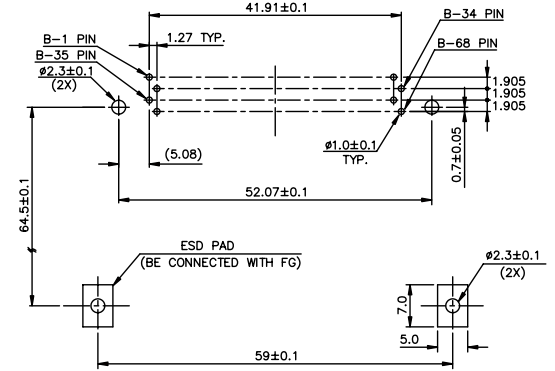
PRODUCT NO.  
52218-000HA/000HALF



NOTES:

- EJECT FORCE : 3.5 Kg MAX.
- EJECT TRAVEL: 8.0mm
- MATERIAL
  - 3.1 HEADER ASS'Y : PLASTIC : HOUSING ...LCP UL94V-0 BLACK
  - PIN : COPPER ALLOY
  - 3.2 EJECT MECHANISM ASS'Y : PLASTIC : GUIDE: POLYPHTHARAMID UL94V-0 BLACK
  - PUSH BUTTON: POLYPHTHARAMID UL94V-0 BLACK
  - PLATE : STAINLESS
  - EMI CONTACT: PHOSPHOR BRONZE
- FINISH (PIN)
  - UNDER PLATING : 0.5µm MIN. Ni
  - CONTACT AREA : 0.1µm MIN. GOLD OVER 0.5µm MIN. Pd-Ni
  - SOLDER TAIL(TIN LEAD OPTION): 2.5µm MIN. Sn-Pb
  - SOLDER TAIL(LEAD FREE OPTION): 2.5µm MIN. PURE TIN

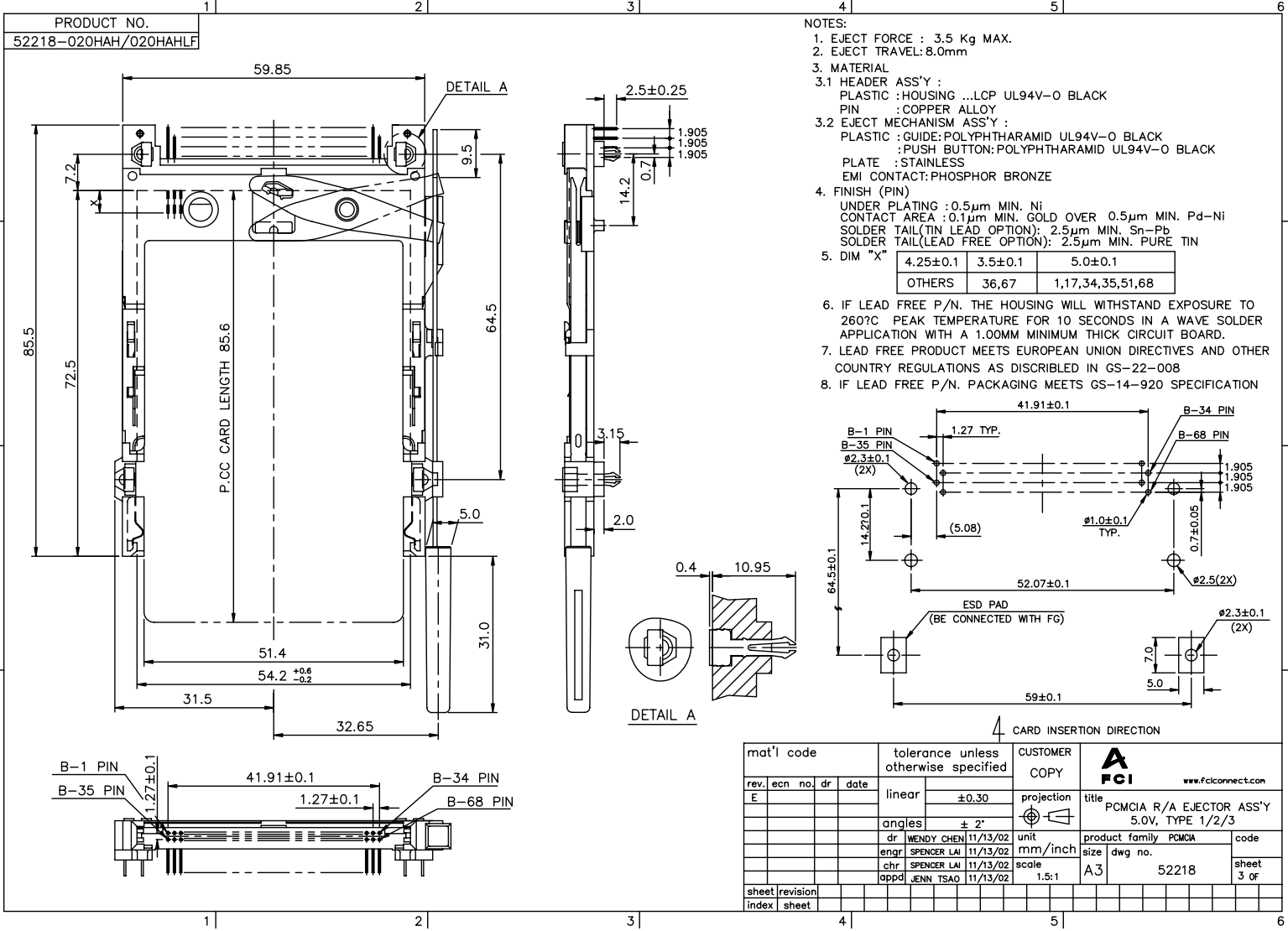
DIM "X"	4.25±0.1	3.5±0.1	5.0±0.1
OTHERS	36,67	1,17,34,35,51,68	



mat'l code				tolerance unless otherwise specified	CUSTOMER COPY	 www.fciconnect.com	
rev.	ecn no.	dr	date	linear	±0.30	projection	title NARROW BODY FRONT EJECTOR TYPE 1/2/3 EJECTOR ASS'Y product family PCMCIA size dwg no. 52218 code sheet 2 of
C				angles	± 2°		
E				dr	WENDY CHEN 07/13/01	unit	
				enqr	MINERVA WANG 07/13/01	mm/inch	
				chr	MINERVA WANG 07/13/01	scale	
				appd	JENN TSAO 07/13/01	1.5:1	
sheet	revision						
index	sheet						

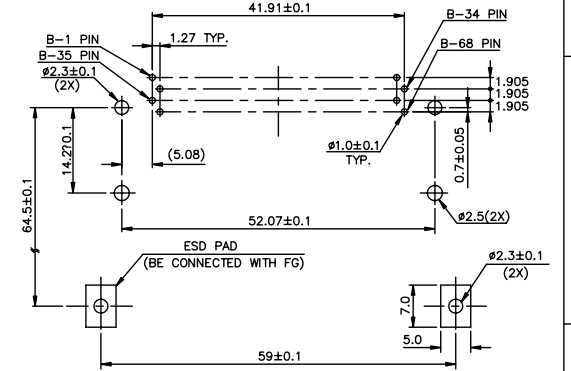
Tous droits strictement réservés. Reproduction ou communication à des tiers sans autorisation écrite du propriétaire. FCI ELECTRONICS. Droits de reproduction BERG ELECTRONICS bv

All rights strictly reserved. Reproduction or issue to third parties in any form without written authority from the proprietor. FCI ELECTRONICS. Copyright BERG ELECTRONICS bv



- PRODUCT NO.  
52218-020HAH/020HAHLF
- NOTES:
- EJECT FORCE : 3.5 Kg MAX.
  - EJECT TRAVEL: 8.0mm
  - MATERIAL
    - 3.1 HEADER ASS'Y :  
PLASTIC : HOUSING ...LCP UL94V-0 BLACK  
PIN : COPPER ALLOY
    - 3.2 EJECT MECHANISM ASS'Y :  
PLASTIC : GUIDE: POLYPHTHARAMID UL94V-0 BLACK  
PUSH BUTTON: POLYPHTHARAMID UL94V-0 BLACK  
PLATE : STAINLESS  
EMI CONTACT: PHOSPHOR BRONZE
  - FINISH (PIN)
    - UNDER PLATING : 0.5µm MIN. Ni
    - CONTACT AREA : 0.1µm MIN. GOLD OVER 0.5µm MIN. Pd-Ni
    - SOLDER TAIL (TIN LEAD OPTION): 2.5µm MIN. Sn-Pb
    - SOLDER TAIL (LEAD FREE OPTION): 2.5µm MIN. PURE TIN

DIM "X"	4.25±0.1	3.5±0.1	5.0±0.1
OTHERS	36,67	1,17,34,35,51,68	

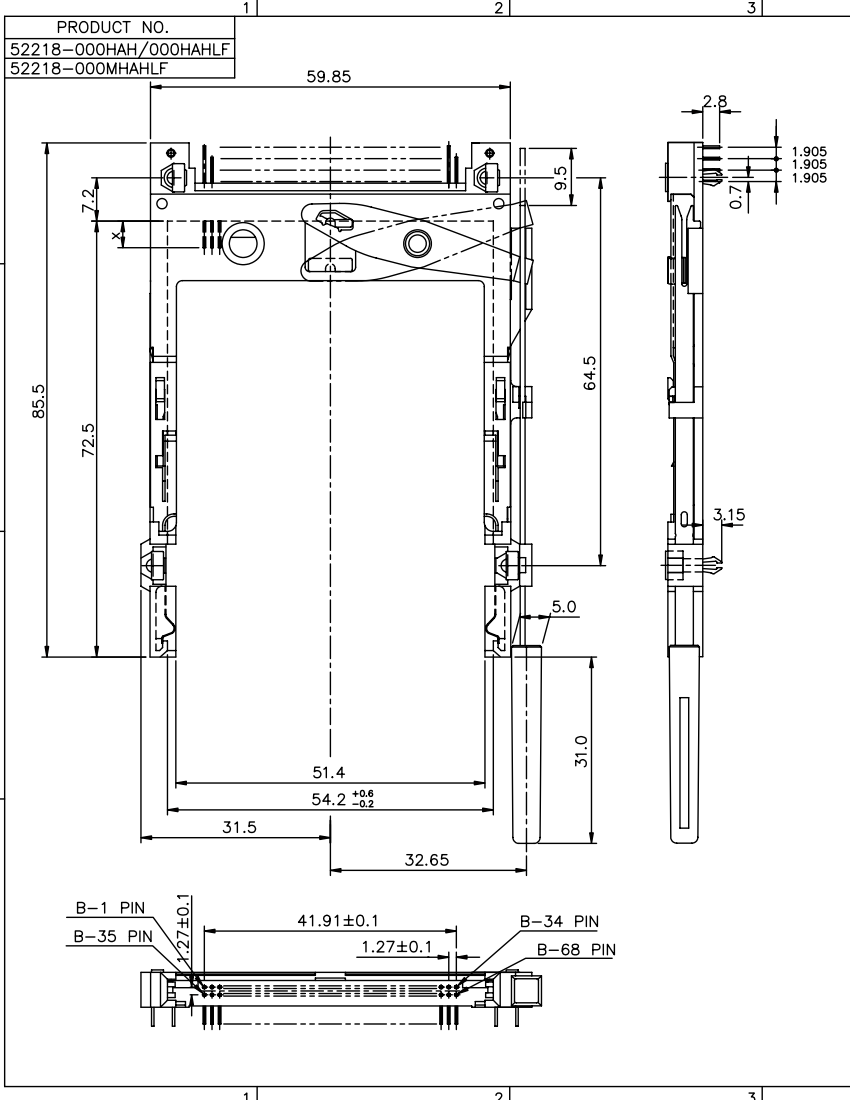


4 CARD INSERTION DIRECTION

mat'l code	tolerance unless otherwise specified	CUSTOMER COPY	<b>FCI</b>	www.fciconnect.com
rev. E	ecm no.	dr	date	linear ±0.30
				angles ± 2°
				dr WENDY CHEN 11/13/02
				engr SPENCER LAI 11/13/02
				chr SPENCER LAI 11/13/02
				appd JENN TSAO 11/13/02
sheet index	revision sheet	projection	title	product family
		↑	PCMCIA R/A EJECTOR ASS'Y 5.0V, TYPE 1/2/3	PCMCIA
		mm/inch	size	code
		scale 1.5:1	A3	52218
				sheet 3 of

Tous droits strictement réservés. Reproduction ou communication à des tiers sans autorisation écrite du propriétaire.  
 All rights strictly reserved. Reproduction or communication to third parties without written authority from the proprietor.  
 Copyright BERG ELECTRONICS S.A.  
 Droits de reproduction BERG ELECTRONICS S.A.

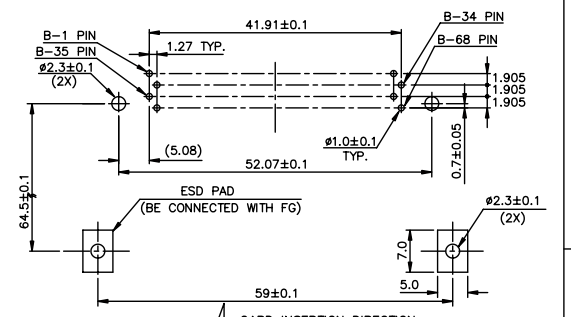
All rights strictly reserved. Reproduction or communication to third parties without written authority from the proprietor.  
 Copyright BERG ELECTRONICS S.A.



- NOTES:
- EJECT FORCE : 3.5 Kg MAX.
  - EJECT TRAVEL: 8.0mm
  - MATERIAL
    - 3.1 HEADER ASS'Y :
      - HOUSING: PLASTIC, UL94V-0 BLACK
      - PIN : COPPER ALLOY
    - 3.2 EJECT MECHANISM ASS'Y :
      - PLASTIC : GUIDE: POLYPHTHAMID UL94V-0 BLACK
      - : PUSH BUTTON: POLYPHTHAMID UL94V-0 BLACK
      - PLATE : STAINLESS
      - EMI CONTACT: COPPY ALLOY
  - FINISH (PIN)
    - UNDER PLATING : 0.5µm MIN. Ni
    - CONTACT AREA : 0.1µm MIN. GOLD OVER 0.5µm MIN. Pd-Ni
    - SOLDER TAIL (TIN LEAD OPTION): 2.5µm MIN. Sn-Pb
    - SOLDER TAIL (LEAD FREE OPTION): 2.5µm MIN. PURE TIN

5. DIM "X"	4.25±0.1	3.5±0.1	5.0±0.1
OTHERS	36,67	1,17,34,35,51,68	

- IF LEAD FREE P/N. THE HOUSING WILL WITHSTAND EXPOSURE TO 260°C PEAK TEMPERATURE FOR 10 SECONDS IN A WAVE SOLDER APPLICATION WITH A 1.00MM MINIMUM THICK CIRCUIT BOARD.
- LEAD FREE PRODUCT MEETS EUROPEAN UNION DIRECTIVES AND OTHER COUNTRY REGULATIONS AS DISCRIBLED IN GS-22-008
- IF LEAD FREE P/N. PACKAGING MEETS GS-14-920 SPECIFICATION
- "M" SHOWS IT IS SPECIAL VERSION, IT IS OPTIONAL AND IN FIRST OF LETTER OF PART NO., 52218-000MHAHLF IS SPECIAL VERSION. 52218-000HAHLF IS NOT SPECIAL VERSION. SPECIAL VERSION DETAIL REFER TO 52219 AND 92140



mat'l code				tolerance unless otherwise specified		CUSTOMER COPY		 www.fciconnect.com	
rev.	ecn no.	dr	date	linear	±0.30	projection	title		
G				angles	± 2°		NARROW BODY FRONT EJECTOR TYPE 1/2/3 EJECTOR ASS'Y		
				dr	WENDY CHEN 07/13/01	unit	product family		code
				enqr	MINERVA WANG 07/13/01	mm/inch	PCMCIA		
				chr	MINERVA WANG 07/13/01	scale	size	dwg no.	sheet
				appd	JENN TSAO 07/13/01	1.5:1	A3	52218	4 of
sheet	revision								
index	sheet								