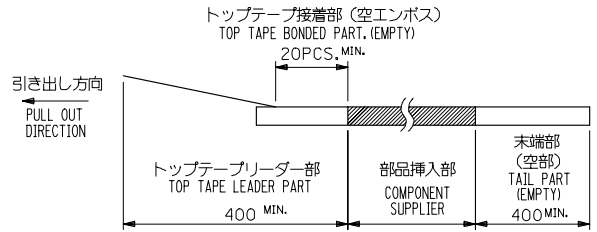
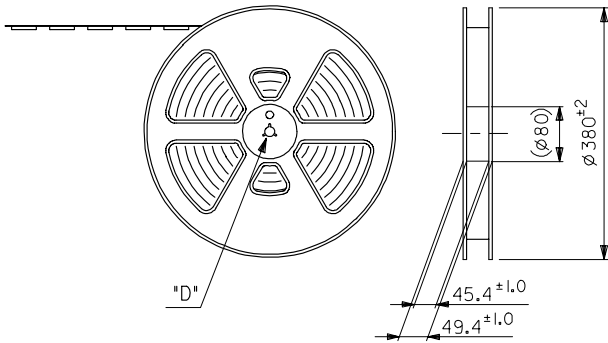


10 9 8 7 6 5 4 3 2 1

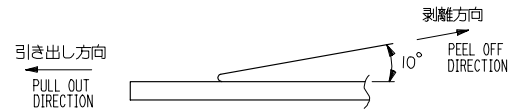
NOTES

1. 製品詳細寸法については、SD図面を参照下さい。
RE DETAILED DIMENSION, SEE SALES DRAWING.
2. 梱包数量：500個/リール
NUMBER OF CONNECTORS : 500PCS/REEL
3. リードテープ長さ LEAD TAPE LENGTH

引き出し方向
PULL OUT DIRECTION



4. トップテープの剥離強度：0.1N～1.3N {10gf～130gf} (剥離方向は下図参照) 尚、本規格値は出荷時に適用。(但し、輸送時に剥離が発生しないこと。)
PEELING OFF FORCE OF TOP TAPE : 0.1N～1.3N {10gf～130gf}
(PEELING DIRECTION AS SHOWN IN FOLLOWING FIG.)
THIS REQUIREMENT SHOULD BE APPLIED AT SHIPMENT.
PEEL OFF SHOULD NOT BE ALLOWED , DURING TRANSPORTATION.



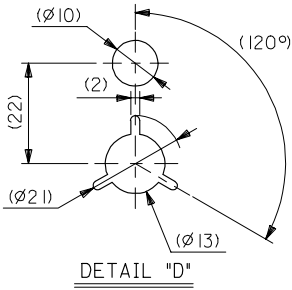
5. 材料 (MATERIAL)

キャリアテープ (CARRIER TAPE) : ポリプロピレン (POLYPROPYLENE)

トップテープ (TOP TAPE) : PET, PE, PEF

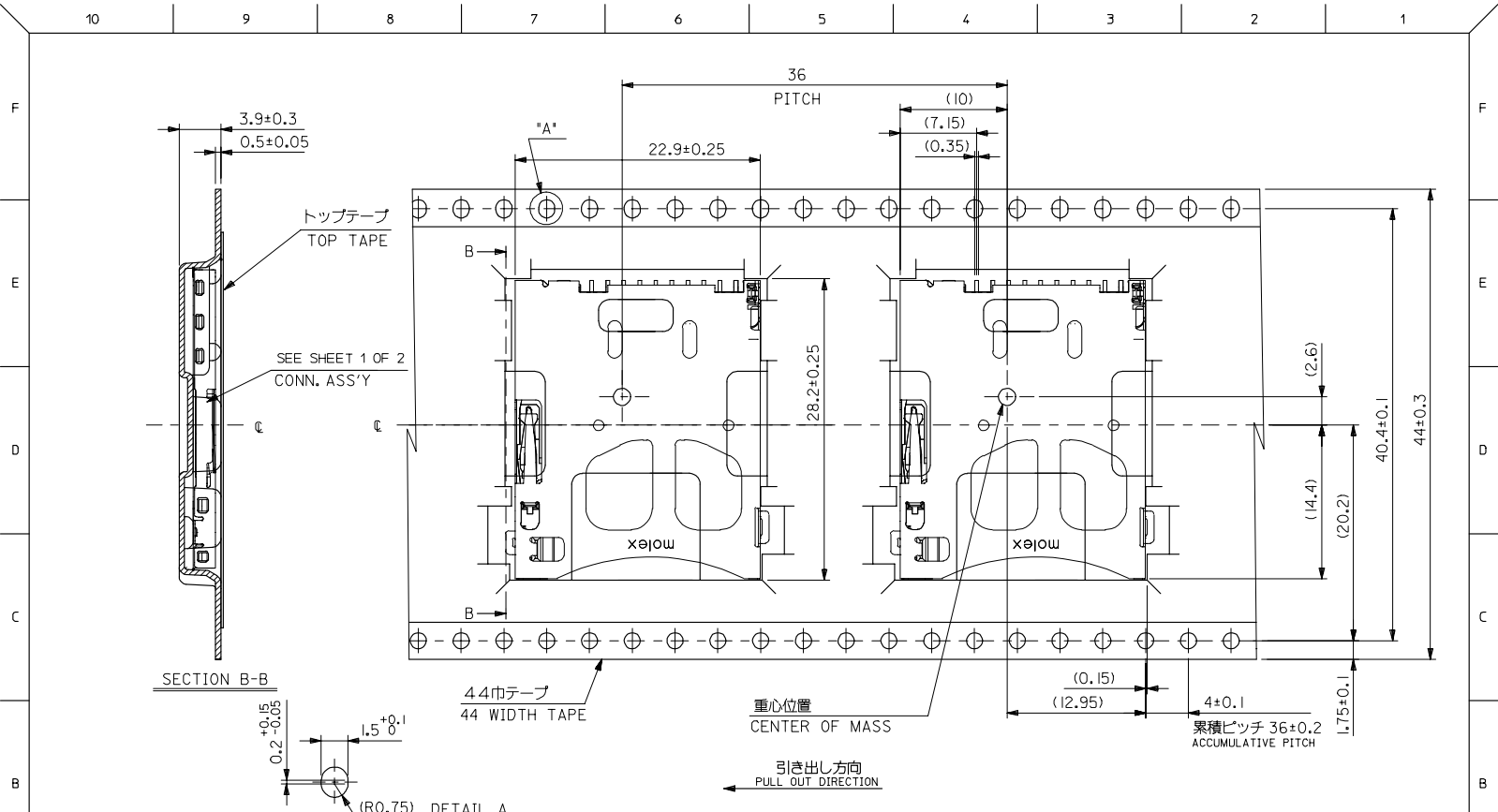
リール (REEL) : ポリスチレン (PS) <リサイクル材を含む>

POLYSTYRENE (PS) <RECYCLE MATERIAL CONTAINED>



500951-1058	500951-1075		
500951-1038	500951-1073	500951-***7*	10
500951-1028	500951-1072		
CONNECTOR NO.	MATERIAL NO.	MODEL NO.	CIRCUIT

REVISED EC NO: J2006-0337 DRWN: YWATANABE 2005/08/01 CHKD: HONITA 2005/08/02 APPR: MIYAZAWA 2005/08/09	GENERAL TOLERANCES (UNLESS SPECIFIED)		DIMENSION STYLE MM ONLY		SCALE ---	DESIGN UNITS METRIC	THIRD ANGLE PROJECTION
	10 UNDER	±0.2	DRAWN BY M. TANAKA	DATE 2005/02/23	TITLE MEMORY STICK DUO CONN. PUSH/PUSH NORMAL & SMALL EMBSTP PKG		
	10 OVER 30 UNDER	±0.25	CHECKED BY N. UKITA	DATE 2005/02/23	MOLEX INCORPORATED		
	30 OVER	±0.3	APPROVED BY N. UKITA	DATE 2005/02/23	MATERIAL NO. SEE CHART	DOCUMENT NO. SD-500951-006	SHEET NO. 1 OF 2
ANGULAR ±3°		DRAFT WHERE APPLICABLE MUST REMAIN WITHIN DIMENSIONS		SIZE A3	THIS DRAWING CONTAINS INFORMATION THAT IS PROPRIETARY TO MOLEX INCORPORATED AND SHOULD NOT BE USED WITHOUT WRITTEN PERMISSION		



REVISED IEC NO. J2006-0337 DRWN: YWATANABE 2005/08/01 CHKD: H. TOMITA 2005/08/02 APPR: J. YAZAWA 2005/08/09 REV. DESCRIPTION	GENERAL TOLERANCES (UNLESS SPECIFIED)		DIMENSION STYLE MM ONLY		SCALE 3:1	DESIGN UNITS METRIC	THIRD ANGLE PROJECTION
	10 UNDER	±0.2	DRAWN BY M. TANAKA	DATE 2005/02/23	TITLE MEMORY STICK DUO CONN. PUSH/PUSH NORMAL & SMALL EMBSTP PKG MOLEX INCORPORATED		
	10 OVER 30 UNDER	±0.25	CHECKED BY N. UKITA	DATE 2005/02/23			
	30 OVER	±0.3	APPROVED BY N. UKITA	DATE 2005/02/23	MOLEX INCORPORATED DOCUMENT NO. SD-500951-006 SHEET NO. 2 OF 2		
ANGULAR	±3°	MATERIAL NO. SEE SHEET 1 OF 2					
DRAFT WHERE APPLICABLE MUST REMAIN WITHIN DIMENSIONS			SIZE A3	THIS DRAWING CONTAINS INFORMATION THAT IS PROPRIETARY TO MOLEX INCORPORATED AND SHOULD NOT BE USED WITHOUT WRITTEN PERMISSION			

10 9 8 7 6 5 4 3 2 1

F

E

D

C

B

A

F

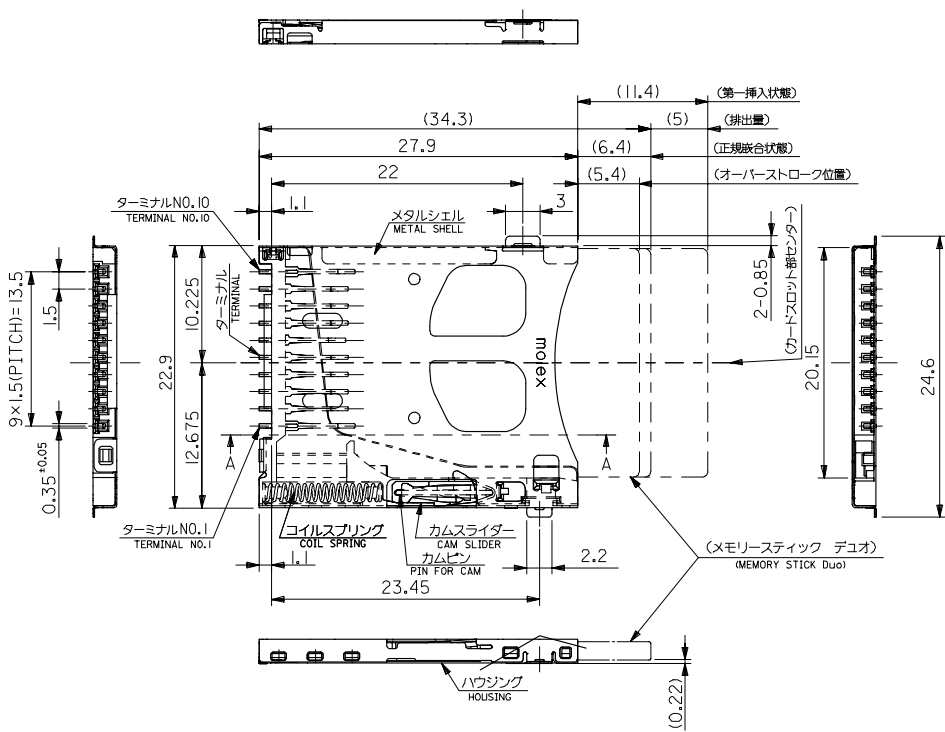
E

D

C

B

A

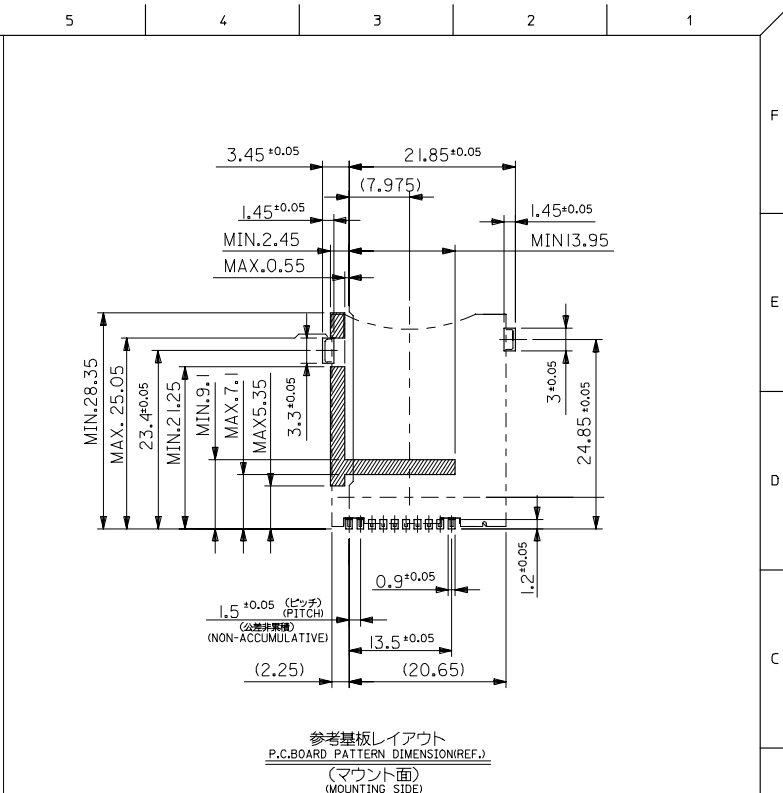
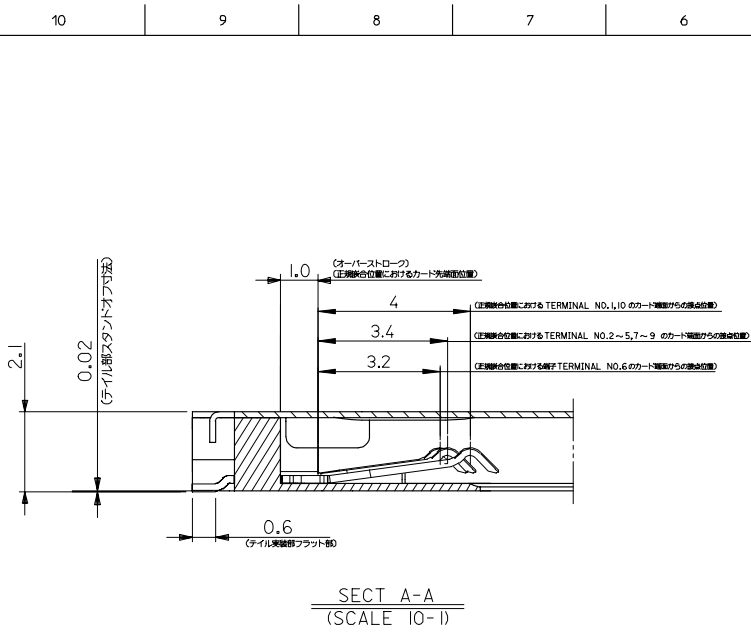


【注記】
NOTES

1. 材料 MATERIAL
 ハウジング : 耐熱性樹脂, UL 94V-0, 色 : 黒
 HOUSING : LCP, UL 94V-0, COLOR : BLACK
 カムスライダ : 耐熱性樹脂, UL 94V-0, 色 : 黒
 CAM SLIDER : LCP, UL 94V-0, COLOR : BLACK
 ターミナル : 銅合金 (t = 0.2)
 TERMINAL : PHOSPHOR BRONZE (t = 0.2)
 メタルシェル : ステンレス鋼 (t = 0.15)
 METAL SHELL : STAINLESS STEEL (t = 0.15)
 コイルスプリング : 鋼線
 COIL SPRING : STEEL WIRE
 カムピン : ステンレス鋼 (φ0.4)
 PIN FOR CAM : STAINLESS STEEL (φ0.4)
2. メッキ仕様 PLATING
 ターミナル TERMINAL
 (接触部) : ニッケル下地 1 μm 以上, 金メッキ 0.5 μm 以上
 Pd-Niメッキ 0.6 μm 以上
 (CONTACT AREA) : Au 0.5 μm MIN., Pd-Ni 0.5 μm MIN.
 (テイル部) : ニッケル下地 1 μm 以上, 銅メッキ 1 μm 以上
 (TAIL AREA) : TN 1 μm MIN., OVER NICKEL 1 μm MIN.
 メタルシェル(全周) : ニッケル下地 1-3 μm, 金, パラジウムコート
 METAL SHELL (ALL AREA) : NICKEL UNDER 1-3 μm, GOLD, PALLADIUM COAT OVER Ni 1-3 μm
 コイルスプリング(全周) : ニッケルメッキ 1-3 μm
 COIL SPRING (ALL AREA) : NICKEL 1-3 μm MIN.
 3. テイル及び挿遊全長の平均値は 0.1 MAX.
 TAIL AND NAIL COPLANARITY TO BE 0.1 MAX.

MATERIAL
注記参照
SEE NOTES

RELEASED		EC NO. J2006-0337		GENERAL TOLERANCES (UNLESS SPECIFIED)		DIMENSION STYLE		SCALE		MODEL NO.		500951-1058		10	
DRAWN: YWATANABE 2005/08/01		CHKD: M TOMITA 2005/08/02		10 UNDER ±0.2		MM ONLY		1:1		500951-w*58		MATERIAL NO.		CIRCUIT	
APPR: JMIYAZAWA 2005/08/09		REV. DESCRIPTION		10 OVER 30 UNDER ±0.25		DRAWN BY DATE		DESIGN UNITS METRIC		THIRD ANGLE PROJECTION		TITLE		MEMORY STICK DUO CONN. PUSH/PUSH NORMAL&SMALL -LEAD FREE-	
0		ANGULAR ±1 °		30 OVER ±0.3		CHECKED BY DATE		MOLLEX		MOLEX INCORPORATED		DOCUMENT NO.		SD-500951-010	
DRAFT WHERE APPLICABLE MUST REMAIN WITHIN DIMENSIONS		SEE CHART		APPROVED BY DATE		MATERIAL NO.		THIS DRAWING CONTAINS INFORMATION THAT IS PROPRIETARY TO MOLEX INCORPORATED AND SHOULD NOT BE USED WITHOUT WRITTEN PERMISSION		SHEET NO.		1 OF 2			



[ランドパターン注記]
P.C.BOARD PATTERN NOTES

- 位置決めボス用の貫通穴(2ヶ所)以外の実線は表面実装用のランド部を示しています。
- 斜線部はランド禁止エリアを示しています。
- 外周の二点線はコネクタ実装時の外形を示しています。

MATERIAL

SEE SHEET 1 OF 2

RELEASED EC NO: J2006-0337 DRWN: YMATAMBE 2005/08/01 CHKD: M TOMITA 2005/08/02 APPR: JMIYAZAWA 2005/08/09	GENERAL TOLERANCES (UNLESS SPECIFIED)		DIMENSION STYLE MM ONLY		SCALE 2:1	DESIGN UNITS METRIC	THIRD ANGLE PROJECTION
	10 UNDER	±0.2	DRAWN BY JMATSUKAWA	DATE 2005/07/29	TITLE MEMORY STICK DUO CONN. PUSH/PUSH NORMAL&SMALL -LEAD FREE-		
	10 OVER 30 UNDER	±0.25	CHECKED BY MTOMITA	DATE 2005/07/29			
	30 OVER	±0.3	APPROVED BY JMIYAZAWA	DATE 2005/07/29	MOLEX INCORPORATED DOCUMENT NO. SD-500951-010		
ANGULAR	±1 °	MATERIAL NO. SEE CHART		SHEET NO. 2 OF 2			
DRAFT WHERE APPLICABLE MUST REMAIN WITHIN DIMENSIONS			SIZE A3	THIS DRAWING CONTAINS INFORMATION THAT IS PROPRIETARY TO MOLEX INCORPORATED AND SHOULD NOT BE USED WITHOUT WRITTEN PERMISSION			