

a

## DUAL AXIS ACCELEROMETER EVALUATION BOARD FOR THE ADXL150 AND ADXL250 ACCELEROMETERS

**ADXL250EB**

### GENERAL DESCRIPTION

The ADXL250EB is a simple evaluation board that contains a surface mounted, dual axis  $\pm 50$  g ADXL250JQC accelerometer, and which allows you to quickly evaluate its performance. The ADXL250EB has a 7 pin 0.1 inch spaced header for access to all power and signal lines that you may attach to a prototyping board (breadboard) or wire via a standard plug. A small prototyping area is available (24 holes) and two holes are provided for mechanical attachment of the ADXL250EB to your application.

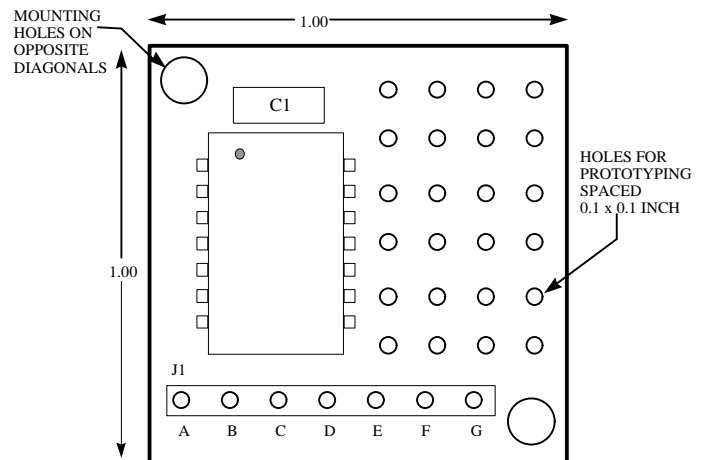
### SPECIAL NOTES ON HANDLING

Note that the ADXL250EB is not reverse polarity protected. Reversing the +Vsupply and Common pins will damage the ADXL250. Dropping the ADXL250EB on a hard surface may generate several thousand g of acceleration, enough to damage the accelerometer. Please refer to the ADXL250 data sheet for information on shock survivability.

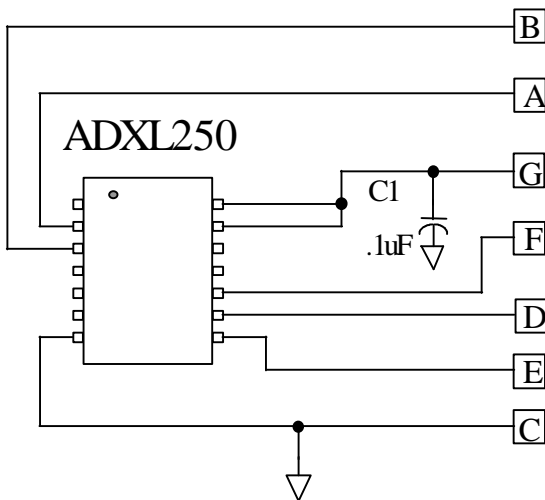
### CIRCUIT DESCRIPTION

The schematic and parts list of the ADXL250EB are shown below. Refer to the ADXL250 data sheet for a complete description of the operation of the accelerometer.

### ADXL250EB Part Layout (Top View)



### ADXL250EB Pin-Out Description



Description	ADXL250EB	ADXL250
Y Out	B	3
Zero g adjust Y	A	2
Vs	G	14
Xout	F	10
Self test	D	9
Zero g adjust X	E	8
Common	C	7

8/17/98, Rev. A