

M3T-FLX100-T/M3T-FLX100-R

Board for converting direction by 90/180°

Function

These boards orient the direction of an emulation pod with an FLX100 (50-pin narrow-pitch connector x 2 pcs.) probe tip by 90/180°.

Application

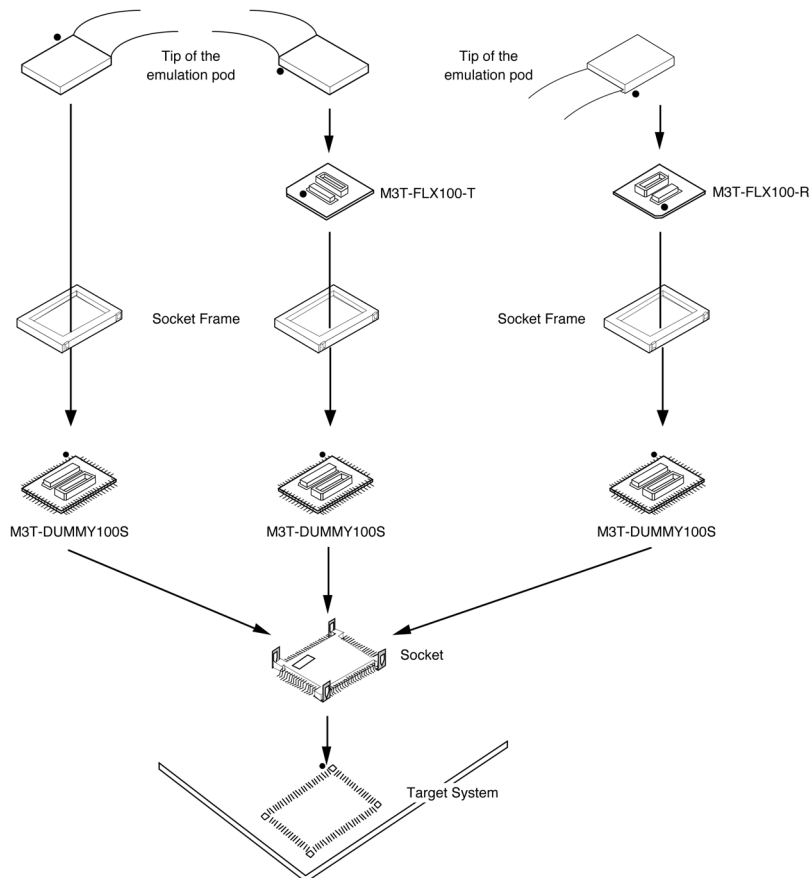
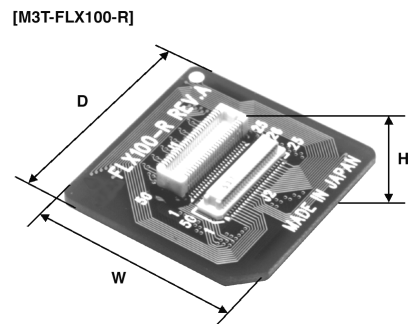
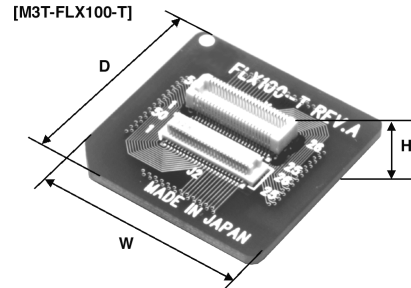
When connecting an emulation pod with an FLX100 probe tip form to a dummy IC (M3T-DUMMY100S) etc. , use the M3T-FLX100-T. It allows the emulation pod to be installed at a position 90° counterclockwise from the corresponding position on the dummy IC. Similarly, the M3T-FLX100-R allows the emulation pod to be installed at a position 180° counterclockwise from the corresponding position on the dummy IC.

Dimensions

30.0(D)×30.0(W)×10.0(H)mm

Usage Example

*The example of when you use the M3T-DUMMY100S is as follows.



* ● : Position of No. 1 pin

[Ordering Information] See Appendix H "Ordering Information".