

San Ace

DC

DC Fan Motor \varnothing 172mm

San Ace 172



"San Ace 172" GV type Sidecut



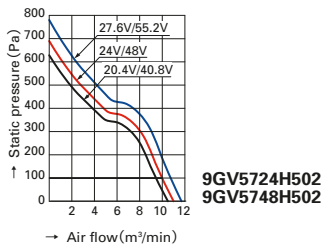
General specifications

- MaterialFrame : Aluminum , Impeller : Plastics
- Expected lifeIt depends on each part numbers (Survival rate: 90% at 60°C, rated voltage, and continuously run in a free air state)
- Motor protection systemCurrent blocking function (with reverse polarity protection)
- Dielectric strength50/60 Hz, 500VAC, 1 minute (between lead conductor and frame)
- Noise measurement methodMeasured at 1m away from the air inlet
- Operating temperature rangeIt depends on each part numbers (Non-condensing)
- Lead wire⊕red, ⊖black
- Mass800g

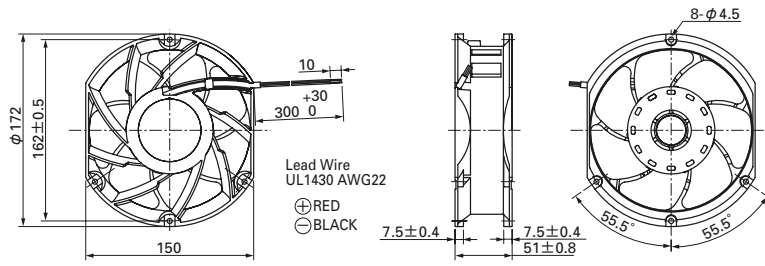
51mm thick Specifications

Model No.	Rated voltage (V)	Operating voltage range (V)	Rated current (A)	Rated input (W)	Rated speed (min ⁻¹)	Air flow (m ³ /min) (CFM)	Static pressure (Pa) (inchH ₂ O)	Noise (dB [A])	Operating temperature range (°C)	Expected life (h)
9GV5724H502	24	20.4~27.6	4.0	96	6,300	11.32 400	690 2.530	74	-10 ~ +70	40,000
9GV5748H502	48	40.8~55.2	2.0	96						

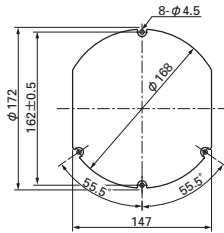
Air flow and static pressure characteristics



Dimensions (unit : mm)



Reference dimension of mounting hole and vent opening (unit : mm)



172mm

Notice

- The products shown in the catalog are subject to Japanese Export Control Law. Diversion contrary to the law of exporting country is prohibited.
- To protect against electrolytic cooling corrosion that may occur in locations of strong electromagnetic noise, we provide fans that are unaffected by electrolytic corrosion. Alternative measures to protect against electrolytic corrosion may include metallic finger guards or other metallic attachments. Please contact us for details.

SANYO DENKI