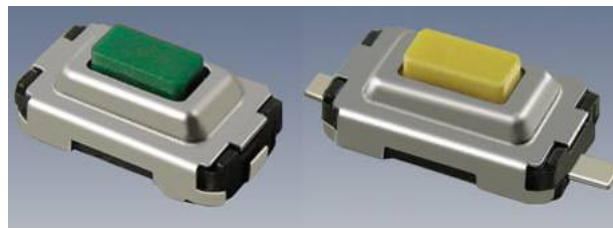


**Model SWT3**  
**Tactile Switches, 6 X 3.5 mm**  
**RoHS Compliant**  
**SMD**



**New Product**

**MODELS AVAILABLE**

Top Actuation G Pin	SWT3-G
Top Actuation G Pin w/ ground	SWT3-X
Top Actuation J Pin	SWT3-J
Top Actuation J Pin w/ ground	SWT3-Z

**ELECTRICAL**

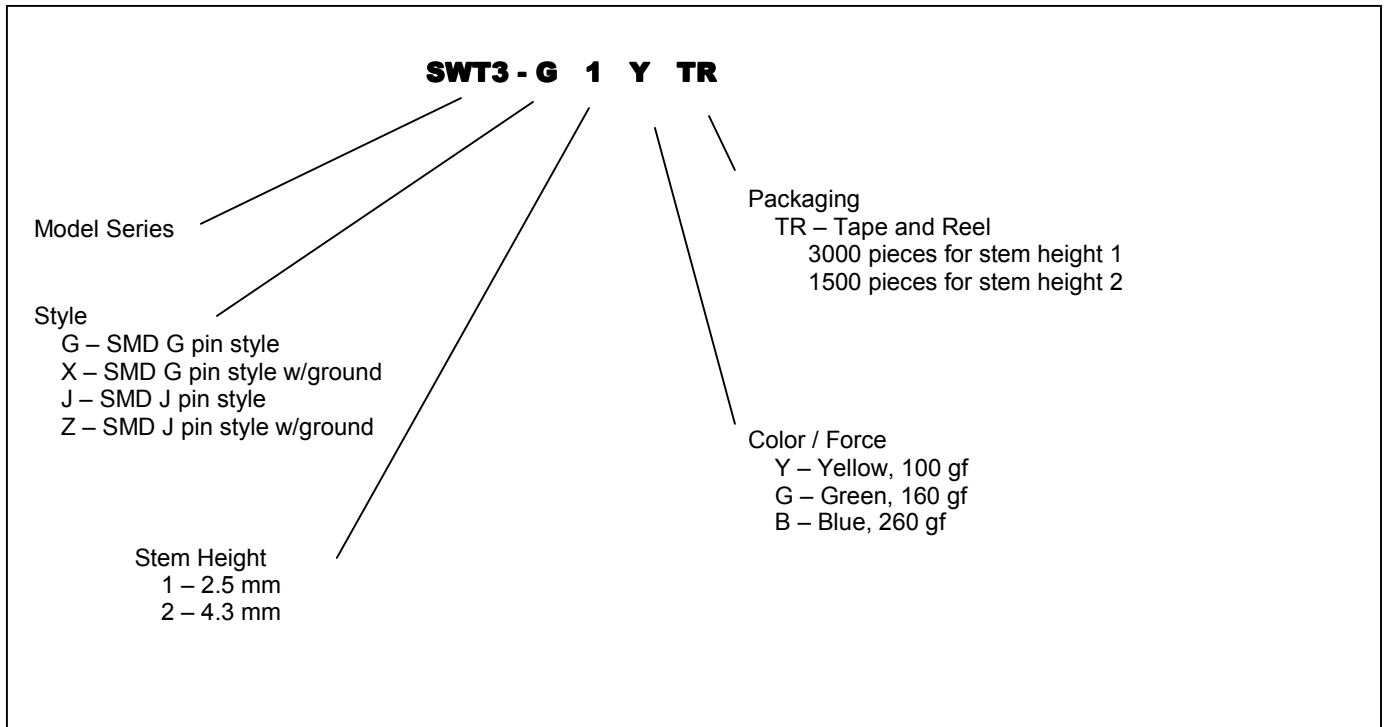
Contact Resistance	100 mΩ
Insulation Resistance	100 M Ω min
Dielectric Strength	AC 250V
Rating	DC 12V, 50 mA
Contact Arrangement	Single throw single pole

**ENVIRONMENTAL**

Life Mechanical	50K Cycles
Operating Force Range (refer to operating force table)	100 gf – 260 gf
Operating Temperature Range	-20°C – 70°C
Storage Temperature Range	-30°C – 80°C
Stop Strength	Vertical Static Load of 3 kgf
Vibration	Mil-STD-202F, Method 201A
Shock	Mil-STD-202F, Method 213B Condition A
Soldering	Recommendations available upon request

# Model SWT3

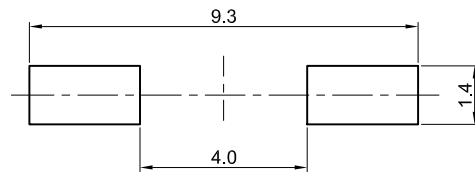
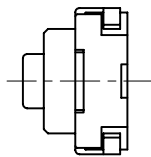
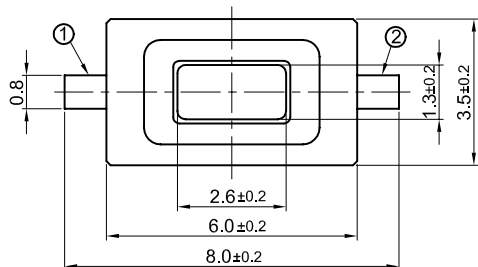
## ORDERING INFORMATION



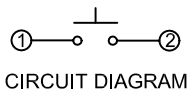
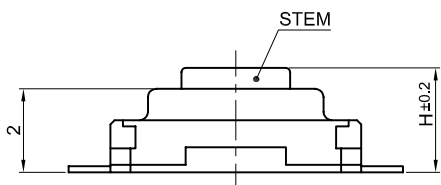
# Model SWT3

## OUTLINE DRAWINGS

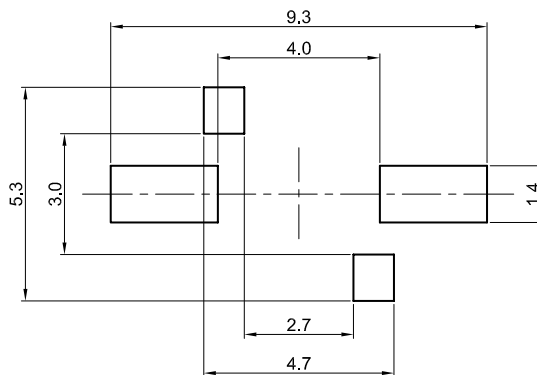
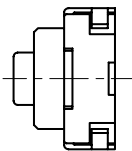
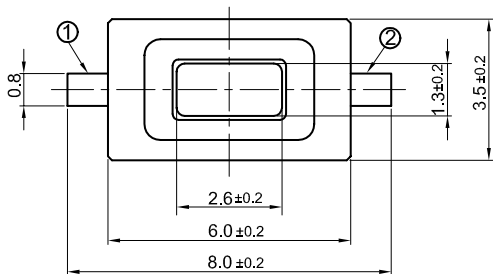
### SWT3-G Top Actuation, G pin



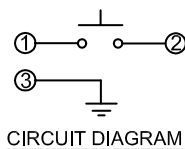
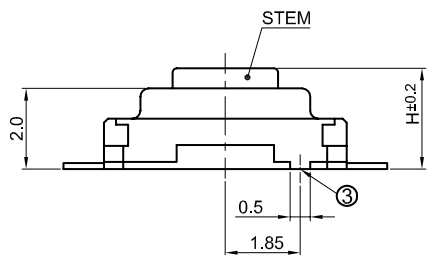
PRINTED CIRCUIT BOARD DIMENSIONS  
(WHEN VIEWED FROM SWITCH MOUNTING SURFACE)



### SWT3-X Top Actuation, G pin with Ground

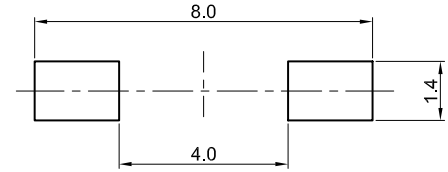
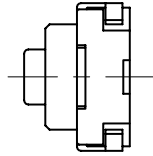
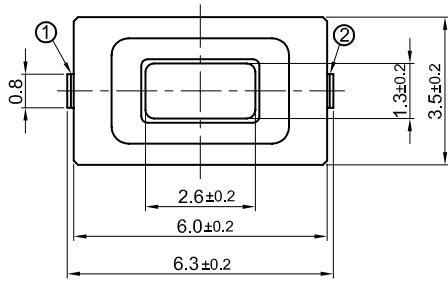


PRINTED CIRCUIT BOARD DIMENSIONS  
(WHEN VIEWED FROM SWITCH MOUNTING SURFACE)

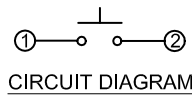
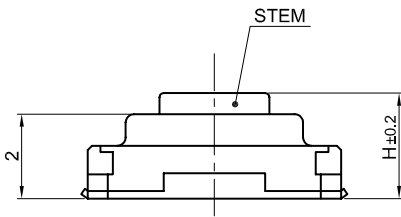


# Model SWT3

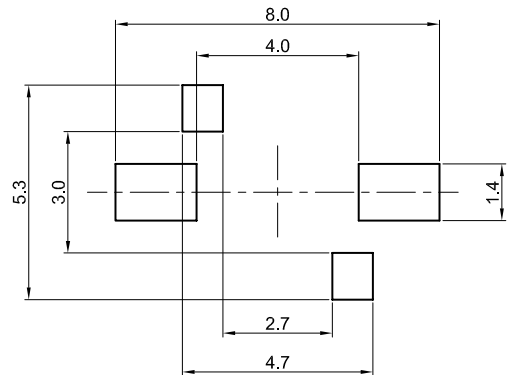
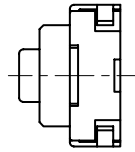
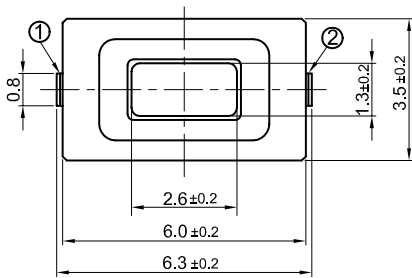
## SWT3-J Top Actuation, J pin



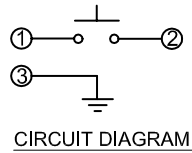
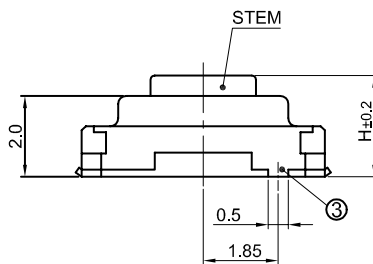
PRINTED CIRCUIT BOARD DIMENSIONS  
(WHEN VIEWED FROM SWITCH MOUNTING FACE)



## SWT3-Z Top Actuation, J pin with Ground



PRINTED CIRCUIT BOARD DIMENSIONS  
(WHEN VIEWED FROM SWITCH MOUNTING FACE)



# Model SWT3

## PACKAGING

