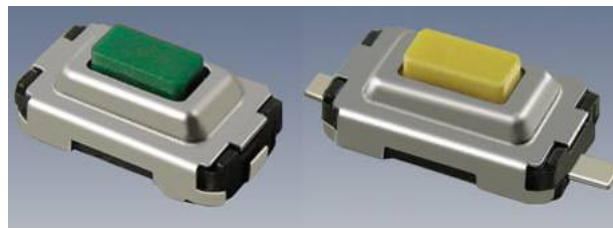


Model SWT3
Tactile Switches, 6 X 3.5 mm
RoHS Compliant
SMD



New Product

MODELS AVAILABLE

| | |
|-------------------------------|--------|
| Top Actuation G Pin | SWT3-G |
| Top Actuation G Pin w/ ground | SWT3-X |
| Top Actuation J Pin | SWT3-J |
| Top Actuation J Pin w/ ground | SWT3-Z |

ELECTRICAL

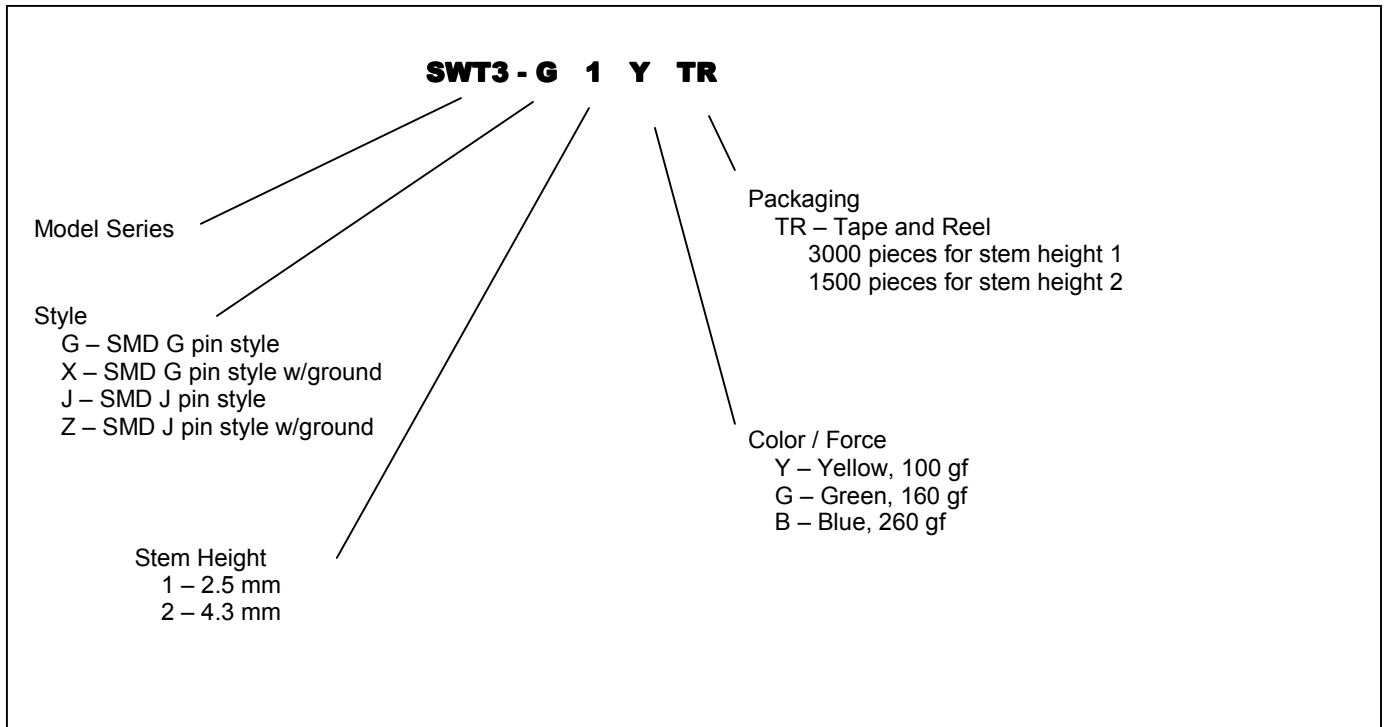
| | |
|-----------------------|--------------------------|
| Contact Resistance | 100 mΩ |
| Insulation Resistance | 100 M Ω min |
| Dielectric Strength | AC 250V |
| Rating | DC 12V, 50 mA |
| Contact Arrangement | Single throw single pole |

ENVIRONMENTAL

| | |
|--|--|
| Life Mechanical | 50K Cycles |
| Operating Force Range (refer to operating force table) | 100 gf – 260 gf |
| Operating Temperature Range | -20°C – 70°C |
| Storage Temperature Range | -30°C – 80°C |
| Stop Strength | Vertical Static Load of 3 kgf |
| Vibration | Mil-STD-202F, Method 201A |
| Shock | Mil-STD-202F, Method 213B Condition A |
| Soldering | Recommendations available upon request |

Model SWT3

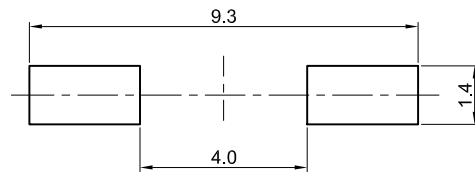
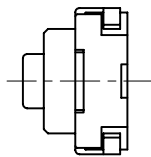
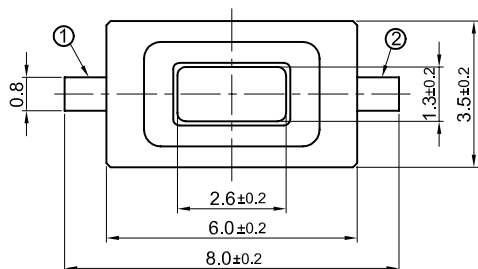
ORDERING INFORMATION



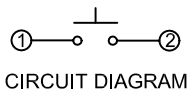
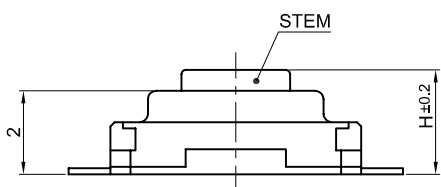
Model SWT3

OUTLINE DRAWINGS

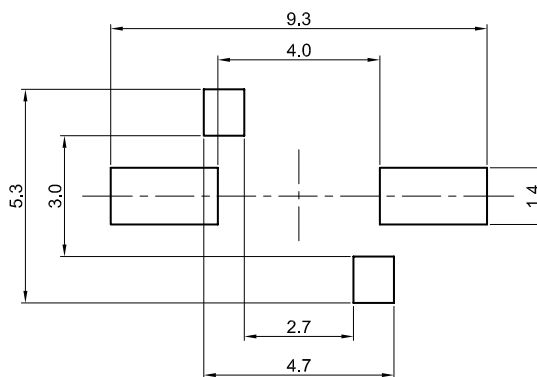
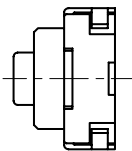
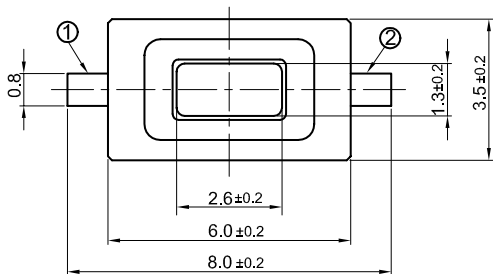
SWT3-G Top Actuation, G pin



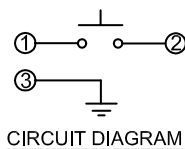
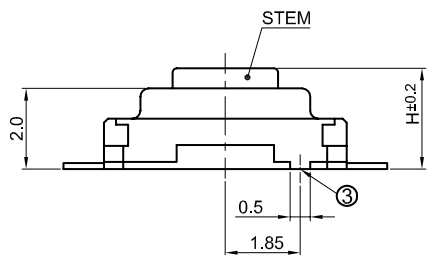
PRINTED CIRCUIT BOARD DIMENSIONS
(WHEN VIEWED FROM SWITCH MOUNTING SURFACE)



SWT3-X Top Actuation, G pin with Ground

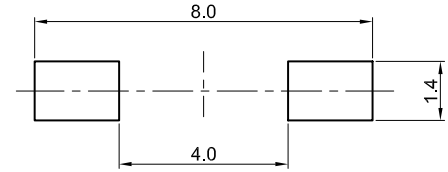
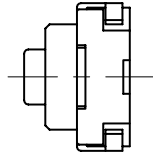
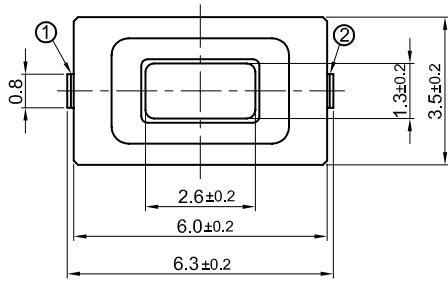


PRINTED CIRCUIT BOARD DIMENSIONS
(WHEN VIEWED FROM SWITCH MOUNTING SURFACE)

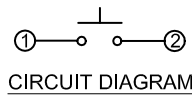
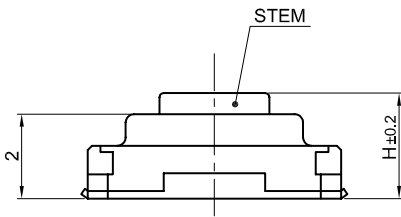


Model SWT3

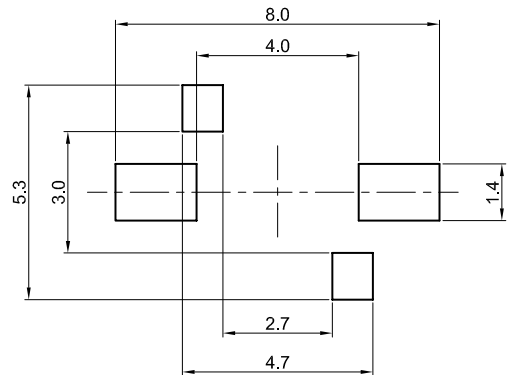
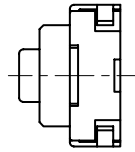
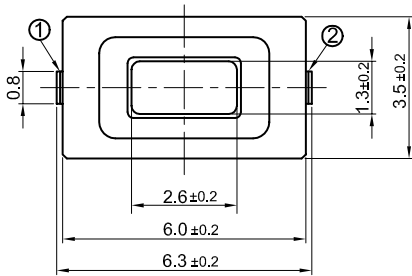
SWT3-J Top Actuation, J pin



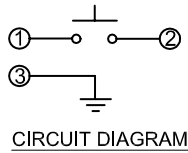
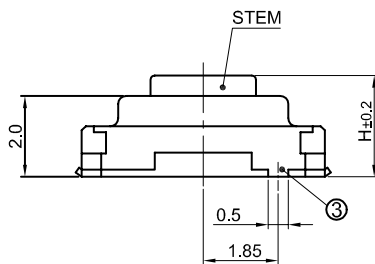
PRINTED CIRCUIT BOARD DIMENSIONS
(WHEN VIEWED FROM SWITCH MOUNTING FACE)



SWT3-Z Top Actuation, J pin with Ground



PRINTED CIRCUIT BOARD DIMENSIONS
(WHEN VIEWED FROM SWITCH MOUNTING FACE)



Model SWT3

PACKAGING

