

## Interactive Catalog Supplements Catalog PDFs

If you need detailed product information, or help choosing the right product for your application, see our [Interactive Catalog](#). Use the [Interactive Catalog](#) to access the most complete and up-to-date information available.

The [Interactive Catalog](#) provides an extensive collection of product specifications, application data, and technical literature that can be searched based on criteria you select.

This PDF catalog information was published in November 2000.



Sensing and Control  
[Interactive Catalog...](#)

**Click this icon to try  
the Interactive Catalog.**

---

**Sensing and Control**  
Honeywell Inc.  
11 West Spring Street  
Freeport, IL 61032

[www.honeywell.com/sensing](http://www.honeywell.com/sensing)

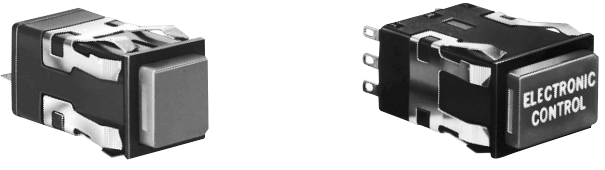
# Manual Switches

## Electronic Control Pushbutton

AML21 Series

INCANDESCENT OR NON-LIGHTED DISPLAY

Electrical Data	page 11
Buttons	page 30/31
Lamps and LEDs	page 46
Accessories	pages 44/45
Mounting Dimensions	pages 47/50



Buttons ordered separately.

- FEATURES**
- 1, 2, or 4 poles.
  - Silver or gold contacts.
  - Full guard bezel option.
  - Momentary or 2-level alternate action (push-on, push-off).
  - UL recognized, CSA certified.
  - Lamps can be furnished installed or ordered separately.
  - Lamp circuit independent of switch circuit.



\*AML21 Series: 1 pole and 2-pole only.

**AML21 ORDER GUIDE**  
**AML21 B**

Housing Type	
<b>Standard Bezel:</b>	
AML21B	Square Non-Lighted
AML21C	Square 1 Lamp Ckt.
AML21E	Rect. Non-Lighted
AML21F	Rect. 1 Lamp Ckt.
AML21G	Rect. 2 Lamp Ckts.
<b>Full Guard Bezel:</b>	
AML21H	Square Non-Lighted
AML21J	Square 1 Lamp Ckt.
AML21K	Rect. Non-Lighted
AML21L	Rect. 1 Lamp Ckt.
AML21M	Rect. 2 Lamp Ckts.

Bezel Color
<b>B</b> Black

Incandescent Lamp Type
<b>A</b> No Lamp Installed
<b>B</b> 6 V Lamp*
<b>C</b> 14 V Lamp*
<b>E</b> 28 V Lamp*

Terminal Type
<b>2</b> .110 × .020 (Solder or Quick-Connect)
<b>3</b> .025 × .025 (Printed Ckt. or Push-On)

Circuitry Codes (Each pole has double-throw)	
Silver Contacts	Mom. Action <b>AA</b> 1-Pole <b>AC</b> 2-Pole <b>CC</b> 4-Pole
	Alt. Action <b>AB</b> 1-Pole <b>AD</b> 2-Pole <b>CD</b> 4-Pole
Gold Contacts	Mom. Action <b>BA</b> 1-Pole <b>BC</b> 2-Pole <b>DC</b> 4-Pole
	Alt. Action <b>BB</b> 1-Pole <b>BD</b> 2-Pole <b>DD</b> 4-Pole
Gold-Plated Silver Contacts	Mom. Action <b>EA</b> 1-Pole <b>EC</b> 2-Pole
	Alt. Action <b>EB</b> 1-Pole <b>ED</b> 2-Pole

\* Lamps will be installed per each lamp circuit specified in the Housing Type.

Example: **AML21BBA2AA**  
Square pushbutton switch housing non-lighted; black bezel; .110 × .020 termination; momentary action; 1-pole, double-throw; silver contacts.

# Manual Switches

## Electronic Control Pushbutton

### LED DISPLAY



Buttons with LED "window" ordered separately.  
LEDs are not replaceable.

### FEATURES

- Identical to AML21 switches, except furnished with high efficiency LED display.
- Rectangular LED's are flush with button surface, providing wide angle indication.
- Optional diode protection for LED's.
- 5 thru 24 VDC LED devices have an internal resistor to maintain current at nominal 20 mA.
- UL recognized, CSA certified.
- LED circuit independent of switch circuit.

Electrical Data	page 11
Buttons	pages 30/31
Lamps and LEDs	page 46
Accessories	pages 44/45
Mounting Dimensions	pages 47/50



\*AML22 Series: 1 pole and 2-pole only.

### AML22 ORDER GUIDE

#### AML22 C

##### Housing Type

**Standard Bezel:**  
**AML22C** Square 1 LED  
**AML22H** Square 1 High-Profile LED (For use with AML52-A buttons)

**Full Guard Bezel:**  
**AML22J** Square 1 LED

#### B

##### Bezel Color

**B**  
Black

#### B

##### LED Color/ Voltage

**Red**  
**B** V\*  
**C** 5V  
**D** 10V  
**E** 15V  
**F** 24V  
**Yellow**  
**H** V\*  
**J** 5V  
**K** 10V  
**L** 15V  
**M** 24V  
**Green**  
**R** V\*  
**S** 5V  
**T** 10V  
**W** 15V  
**X** 24V

#### 2

##### Terminal Type

**2**  
 .110 × .020  
 (Solder or Quick-Connect)

**3**  
 .025 × .025  
 (Printed Ckt., or Push-On)

**8**  
 .110 × .020  
 With Diode Protection for LED

#### AA

##### Circuitry Codes (Each pole has double-throw)

Silver Contacts	Mom. Action <b>AA</b> 1-Pole <b>AC</b> 2-Pole <b>CC</b> 4-Pole
	Alt. Action <b>AB</b> 1-Pole <b>AD</b> 2-Pole <b>CD</b> 4-Pole
Gold Contacts	Mom. Action <b>BA</b> 1-Pole <b>BC</b> 2-Pole <b>DC</b> 4-Pole
	Alt. Action <b>BB</b> 1-Pole <b>BD</b> 2-Pole <b>DD</b> 4-Pole
Gold-Plated Silver Contacts	Mom. Action <b>EA</b> 1-Pole <b>EC</b> 2-Pole
	Alt. Action <b>EB</b> 1-Pole <b>ED</b> 2-Pole

Manuals

\* See LED information for devices without current limiting resistor, page 46.

Example: **AML22CBB2AA**

Square pushbutton switch housing with one LED, black bezel; red LED (without resistor); .110 × .020 termination; momentary action, 1-pole, double-throw; silver contacts.

### CONTACT ARRANGEMENT

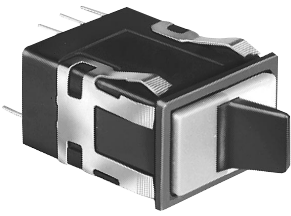
1, 2 or 4 poles: Form C



# Manual Switches

## Electronic Control Paddle

### INCANDESCENT OR NON-LIGHTED DISPLAY



Covers ordered separately.

#### FEATURES

- Silver or gold contacts.
- 1, 2 or 4 poles.
- Toggle type paddle operators permanently installed in rectangular housings.
- Covers for the switch housing may be lighted or unlighted.
- UL recognized, CSA certified.
- Lamps can be furnished installed or ordered separately.
- Lamp circuit independent of switch circuit.

Electrical Data	page 11
Paddle Covers	page 35
Lamps and LEDs	page 46
Accessories	page 45
Mounting Dimensions	pages 47/50

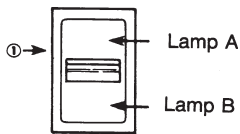


\*AML23 Series: 1 pole and 2-pole only.

### \*AML23 ORDER GUIDE

AML23 E	B	A	2	AA	01
Housing Type	Operator/Bezel Color	Incandescent Lamp Type	Terminal Type	Circuitry Codes	Operating Action
<b>AML23 E</b> Rectangular Non-Lighted  <b>AML23 F</b> Rectangular 1 Lamp Ckt. (A)  <b>AML23 G</b> Rectangular 2 Lamp Ckts. (A & B)	<b>B</b> Black/Black	<b>A</b> No Lamp Installed  <b>B</b> 6 V Lamp*  <b>C</b> 14 V Lamp*  <b>E</b> 28 V Lamp*	<b>2</b> .110 × .020 (Solder or Quick-Connect)  <b>3</b> .025 × .025 (Printed Ckt., or Push-on)	Insert Code letters as shown in Circuitry Chart	Insert Code numbers from Operating Action Chart

\* Lamps will be installed per each lamp circuit specified in the Housing Type.



① The "MICRO SWITCH" identification is shown on this side of the switch housings.

Example: **AML23EBA2AA01**  
 Rectangular non-lighted paddle switch housing; black paddle and bezel; .110 × .020 terminals; with one circuit ON and one circuit OFF in each extreme operator position (maintained).

### CIRCUITRY

Silver Contacts	Gold Contacts	2-Position		3-Position		
AA	BA					
AC	BC					
(Non-illuminated switches only)						
CA	DA					
CC	DC					
(Non-illuminated switches only)						

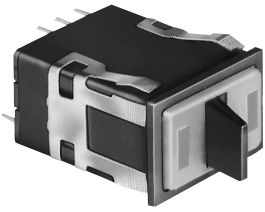
### OPERATING ACTION

2-Position:		
Maint.	01 None	Maint.
Mom.	02 None	Maint.
Maint.	03 None	Mom.
3-Position:		
Maint.	04 Maint.	Maint.
Mom.	05 Maint.	Mom.
Maint.	06 Maint.	Mom.
Mom.	07 Maint.	Maint.

# Manual Switches

## Electronic Control Paddle

### LED DISPLAY



Covers with LED "window" ordered separately.

### FEATURES

- Identical to AML23, except furnished with one or two rectangular high efficiency LED's which give flush display area and wide angle indication.
- Available with or without diode protection for LED's.
- LED circuit independent of switch circuit.

Electrical Data	page 11
Paddle Covers	page 36
Lamps and LEDs	page 46
Accessories	page 45
Mounting Dimensions	pages 47/50

- 5 thru 24 VDC devices have internal resistor to maintain current at nominal 20 mA.
- UL recognized, CSA certified.



\*AML25 Series: 1 pole and 2-pole only.

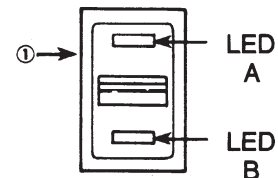
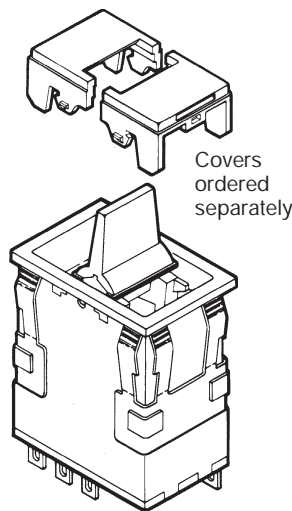
### AML25 ORDER GUIDE

AML25 F	B	B	2	AA	01	R	X
Housing Type	Operator/Bezel Color	LED Voltage	Terminal Type/Diode Protection	Circuitry Codes	Operating Code	LED Color (LED A)	LED Color (LED B)
<b>AML25 F</b> Rectangular 1 LED  <b>AML25 G</b> Rectangular 2 LED's	<b>B</b> Black/Black	<b>B</b> V*  <b>C</b> 5 V  <b>D</b> 10 V  <b>E</b> 15 V  <b>F</b> 24 V	<b>2</b> .110 x .020 (Solder or Q-C)  <b>3</b> .025 x .025 (Printed Ckt., or Push-On)  <b>8</b> .110 x .020 w/Diode protection	Insert code letters as shown in Circuitry Chart  LED version available only with <b>AA</b> <b>BA</b> <b>CA</b> <b>DA</b> circuitry	Insert code numbers from Operating Action Chart	<b>R</b> Red <b>Y</b> Yellow <b>G</b> Green <b>X</b> No LED	<b>R</b> Red <b>Y</b> Yellow <b>G</b> Green <b>X</b> No LED

\* See LED application information for devices without current-limiting resistor, page 46.

Example: **AML25FBB2AA01RX**  
 Rectangular paddle switch; illuminated with one red LED, this device has a black paddle and bezel, and .110 x .020 terminals; with one circuit ON and one circuit OFF in each extreme operator position (maintained).

NOTE: For further information on replacement LED's, call the 800 number.



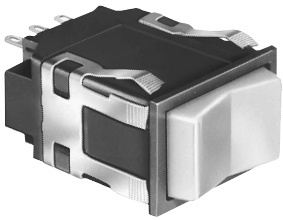
① The "MICRO SWITCH" identification is shown on this side of the switch housings.

Manuals

# Manual Switches

## Electronic Control Rocker

### INCANDESCENT OR NON-LIGHTED DISPLAY



#### FEATURES

- Silver or gold contacts.
- 2 or 3 position operation.
- UL recognized, CSA certified.
- Lamps can be furnished installed or ordered separately.
- Lamp circuit independent of switch circuit.

Electrical Data	page 11
Rockers	page 39
Lamps	page 46
Accessories	pages 44/45
Mounting Dimensions	pages 47/50

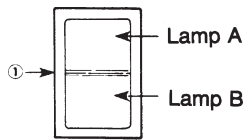


\*AML24 Series: 1 pole and 2-pole only.

Rocker operators ordered separately.

### AML24 ORDER GUIDE

AML24 E	B	A	2	AA	01
<b>Housing Type</b>	<b>Bezel Color</b>	<b>Incandescent Lamp Type</b>	<b>Terminal Type</b>	<b>Circuitry Codes</b>	<b>Operating Action</b>
<b>AML24 E</b> Rectangular Non-Lighted  <b>AML24 F</b> Rectangular 1 Lamp Ckt. (A)  <b>AML24 G</b> Rectangular 2 Lamp Ckts.	<b>B</b> Black	<b>A</b> No Lamp Installed  <b>B</b> 6 V Lamp*  <b>C</b> 14 V Lamp*  <b>E</b> 28 V Lamp*	<b>2</b> .110 × .020 (Solder or Quick-Connect)  <b>3</b> .025 × .025 (Printed Ckt., or Push-on)	Insert Code letters as shown in Circuitry Chart	Insert Code numbers from Operating Action Chart



① The "MICRO SWITCH" identification is shown on this side of the switch housings.

\* Lamps will be installed per each lamp circuit specified in the Housing Type.

#### Example: AML24EBA2AA01

Rectangular non-lighted rocker switch housing; black bezel; .110 × .020 terminals; with one circuit ON and one circuit OFF in each extreme operator position (maintained).

### CIRCUITRY

Silver Contacts	Gold Contacts	2-Position		3-Position			
AA	BA						
AC (Non-illuminated switches only)	BC						
CA	DA						
CC (Non-illuminated switches only)	DC						

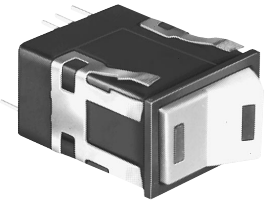
### OPERATING ACTION

<b>2-Position:</b>			
Maint.	01 None	Maint.	Maint.
Mom.	02 None	Maint.	Maint.
Maint.	03 None	Mom.	Mom.
<b>3-Position:</b>			
Maint.	04 Maint.	Maint.	Maint.
Mom.	05 Maint.	Mom.	Mom.
Maint.	06 Maint.	Mom.	Mom.
Mom.	07 Maint.	Maint.	Maint.

# Manual Switches

## Electronic Control Rocker

### LED DISPLAY



Rocker operators ordered separately.  
LEDs are not replaceable.

### FEATURES

- Identical to AML24, except furnished with one or two rectangular high efficiency LED's which give flush display area and wide angle indication.
- Available with or without diode protection for LED's.
- LED circuit independent of switch circuit.

Electrical Data	page 11
Rockers	page 40
Lamps and LEDs	page 46
Accessories	page 45
Mounting Dimensions	pages 47/50

- 5 thru 24 VDC LED devices have internal resistor to maintain current at nominal 20 mA.
- UL recognized, CSA certified.



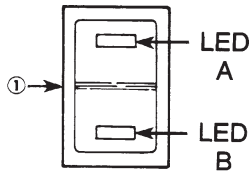
\*AML26 Series: 1 pole and 2-pole only.

### AML26 ORDER GUIDE

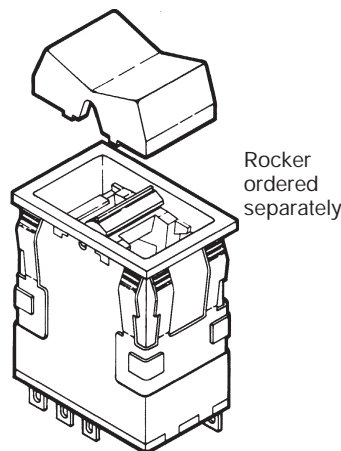
AML26 F	B	B	2	AA	01	R	X
Housing Type	Bezel Color	LED Voltage	Terminal Type/ Diode Protection	Circuitry Codes	Operating Action	LED Color (LED A)	LED Color (LED B)
AML26 F 1 LED	B Black	B V*	2 .110 × .020 (Solder or Quick-Connect)	Insert code letters as shown in Circuitry Chart	Insert code numbers from Operating Action Chart	R Red	R Red
AML26 G 2 LED's		C 5 V	3 .025 × .025 (Printed Ckt., or Push-On)	LED version available only with AA BA CA DA circuitry		Y Yellow	Y Yellow
		D 10 V	8 .110 × .020 w/Diode for LED protection			G Green	G Green
		E 15 V				X No LED	X No LED
		F 24 V					

\* See LED application information for devices without current-limiting resistor, page 46.

Example: **AML26FBB2AA01RX**  
Rectangular rocker switch; illuminated with one LED, this device has a black bezel, .110 × .020 terminals; with one circuit ON and one circuit OFF in each extreme operator position (maintained).



① The "MICRO SWITCH" identification is shown on this side of the switch housings.



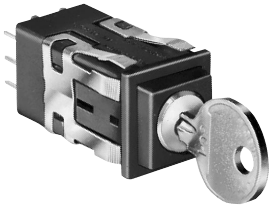
Manuals



# Manual Switches

## Electronic Control Keylock

NON-LIGHTED



**FEATURES**

- Enable control of access to computer peripherals, keyboards, point-of-sale terminals, and security systems which are locked when unattended; and other locations where tampering must be discouraged.
- 2 or 3 positions, maintained (90° throw) and momentary action (60° throw).
- 5-bit key combinations

Electrical Data	page 11
Accessories	pages 44/45
Mounting Dimensions	pages 47/50

- UL recognized, CSA certified.
- Static discharge protection (up to 20 kV when grounded).

**AML27 ORDER GUIDE**

AML27 A	B	K	2	AA	21	BA
<b>Housing Type</b>	<b>Bezel Color</b>	<b>Button Color</b>	<b>Terminal Type</b>	<b>Circuitry Codes (Each pole has double-throw)</b>	<b>Operation Action (Key out in center position, except where noted)</b>	
AML27 A	B	K	2	Silver Contacts: AA 1 pole AC 2 pole	CCW	Center
Square housing	Black	Black	.110 x .020 (Solder or Quick-Connect)	Gold Contacts: BA 1 pole BC 2 pole	Center	CW
Non-Lighted			3		None	21
			.025 x .025 (Printed Circuit or Push-On)		Maint.	Maint.
					None	22*
					Maint.	Maint.
					None	23
					Maint.	Mom.
					Maint.	24
					Mom.	Maint.
					Maint.	25
					Mom.	Mom.
					Maint.	26**
					Maint.	Maint.
					Mom.	27***
					Maint.	Maint.
					Maint.	28***
					Maint.	Maint.
					Maint.	29†
					Maint.	Maint.
					Maint.	30†
					Maint.	Mom.
					Maint.	31††
					Maint.	Mom.

**Key Combinations**

(Two Keys Furnished)

BA	BS
BB	BT
BD	BV
BE	BW

**REPLACEMENT KEYS**

One key per listing.

Key Combination	Key Code	Catalog Listing
BA	110	30PA101-AML
BB	109	30PA102-AML
BD	107	30PA104-AML
BE	106	30PA105-AML
BS	117	30PA117-AML
BT	118	30PA118-AML
BV	119	30PA119-AML
BW	120	30PA120-AML

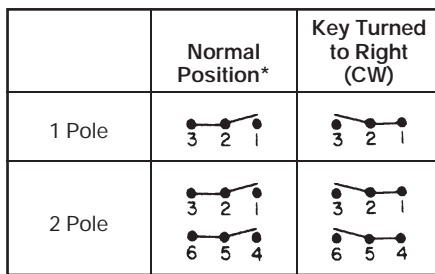
Specify different Key Combinations to acquire different keys, i.e.; AML27ABK2AA21BB and AML27ABK2AA21BE have different keys. AML27ABK2AA21BB and AML27ABK3BC25BB have identical interchangeable keys.  
 Example: **AML27ABK2AC28BB**  
 Square housing; black bezel and button; .110 x .020 terminals; 2-pole double-throw; silver contacts; 3-position maintained and key code "BB".

28 and 29 operating actions should be used with Key Combinations BA and BB.

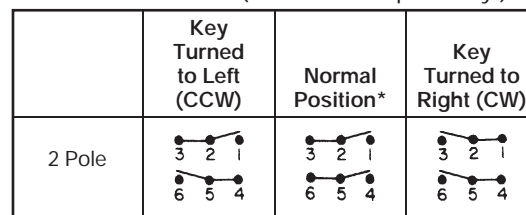
\* Key out in both positions.  
 \*\* Key out in all three positions.  
 \*\*\* Key out in center and CW positions.  
 † Key out in center and CCW positions.  
 †† Key out in CCW only.

**CIRCUITRY**

**2-Position Switches:**



**3-Position Switches (Available in 2-pole only.)**



\* Circuit remains the same with key in or out.