

Interactive Catalog Supplements Catalog PDFs

If you need detailed product information, or help choosing the right product for your application, see our [Interactive Catalog](#). Use the [Interactive Catalog](#) to access the most complete and up-to-date information available.

The [Interactive Catalog](#) provides an extensive collection of product specifications, application data, and technical literature that can be searched based on criteria you select.

This PDF catalog information was published in November 2000.



Sensing and Control
[Interactive Catalog...](#)

**Click this icon to try
the Interactive Catalog.**

Sensing and Control
Honeywell Inc.
11 West Spring Street
Freeport, IL 61032

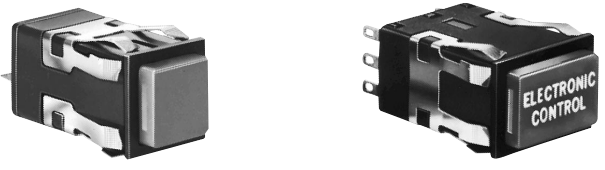
www.honeywell.com/sensing

Manual Switches

Electronic Control Pushbutton

INCANDESCENT OR NON-LIGHTED DISPLAY

| | |
|---------------------|-------------|
| Electrical Data | page 11 |
| Buttons | page 30/31 |
| Lamps and LEDs | page 46 |
| Accessories | pages 44/45 |
| Mounting Dimensions | pages 47/50 |



Buttons ordered separately.

- FEATURES**
- 1, 2, or 4 poles.
 - Silver or gold contacts.
 - Full guard bezel option.
 - Momentary or 2-level alternate action (push-on, push-off).
 - UL recognized, CSA certified.
 - Lamps can be furnished installed or ordered separately.
 - Lamp circuit independent of switch circuit.



*AML21 Series: 1 pole and 2-pole only.

AML21 ORDER GUIDE

| AML21 B | | B | A | 2 | AA |
|---|--|-------------|-------------------------------|---|---|
| Housing Type | | Bezel Color | Incandescent Lamp Type | Terminal Type | Circuitry Codes (Each pole has double-throw) |
| Standard Bezel: AML21B Square Non-Lighted AML21C Square 1 Lamp Ckt. AML21E Rect. Non-Lighted AML21F Rect. 1 Lamp Ckt. AML21G Rect. 2 Lamp Ckts. | | B Black | A No Lamp Installed | 2 .110 × .020 (Solder or Quick-Connect) | Silver Contacts Mom. Action AA 1-Pole AC 2-Pole CC 4-Pole |
| Full Guard Bezel: AML21H Square Non-Lighted AML21J Square 1 Lamp Ckt. AML21K Rect. Non-Lighted AML21L Rect. 1 Lamp Ckt. AML21M Rect. 2 Lamp Ckts. | | | B 6 V Lamp* | | |
| | | | C 14 V Lamp* | Gold Contacts Mom. Action BA 1-Pole BC 2-Pole DC 4-Pole | Alt. Action BB 1-Pole BD 2-Pole DD 4-Pole |
| | | | E 28 V Lamp* | | Gold-Plated Silver Contacts Mom. Action EA 1-Pole EC 2-Pole |

* Lamps will be installed per each lamp circuit specified in the Housing Type.

Example: **AML21BBA2AA**
 Square pushbutton switch housing non-lighted; black bezel; .110 × .020 termination; momentary action; 1-pole, double-throw; silver contacts.

Manual Switches

Electronic Control Pushbutton

LED DISPLAY



Buttons with LED "window" ordered separately. LEDs are not replaceable.

FEATURES

- Identical to AML21 switches, except furnished with high efficiency LED display.
- Rectangular LED's are flush with button surface, providing wide angle indication.
- Optional diode protection for LED's.
- 5 thru 24 VDC LED devices have an internal resistor to maintain current at nominal 20 mA.
- UL recognized, CSA certified.
- LED circuit independent of switch circuit.

| | |
|---------------------|-------------|
| Electrical Data | page 11 |
| Buttons | pages 30/31 |
| Lamps and LEDs | page 46 |
| Accessories | pages 44/45 |
| Mounting Dimensions | pages 47/50 |



*AML22 Series: 1 pole and 2-pole only.

AML22 ORDER GUIDE

AML22 C

| Housing Type |
|--|
| Standard Bezel: AML22C Square 1 LED AML22H Square 1 High-Profile LED (For use with AML52-A buttons) |
| Full Guard Bezel: AML22J Square 1 LED |

| Bezel Color |
|-------------------|
| B Black |

| LED Color/ Voltage |
|--|
| Red B V* C 5V D 10V E 15V F 24V |
| Yellow H V* J 5V K 10V L 15V M 24V |
| Green R V* S 5V T 10V W 15V X 24V |

| Terminal Type |
|--|
| 2 .110 × .020 (Solder or Quick-Connect) |
| 3 .025 × .025 (Printed Ckt., or Push-On) |
| 8 .110 × .020 With Diode Protection for LED |

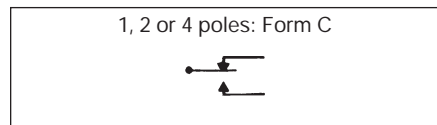
| Circuitry Codes (Each pole has double-throw) | |
|---|--|
| Silver Contacts | Mom. Action AA 1-Pole AC 2-Pole CC 4-Pole |
| | Alt. Action AB 1-Pole AD 2-Pole CD 4-Pole |
| Gold Contacts | Mom. Action BA 1-Pole BC 2-Pole DC 4-Pole |
| | Alt. Action BB 1-Pole BD 2-Pole DD 4-Pole |
| Gold-Plated Silver Contacts | Mom. Action EA 1-Pole EC 2-Pole |
| | Alt. Action EB 1-Pole ED 2-Pole |

Manuals

* See LED information for devices without current limiting resistor, page 46.

Example: **AML22CBB2AA**
 Square pushbutton switch housing with one LED, black bezel; red LED (without resistor); .110 × .020 termination; momentary action, 1-pole, double-throw; silver contacts.

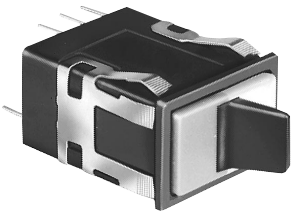
CONTACT ARRANGEMENT



Manual Switches

Electronic Control Paddle

INCANDESCENT OR NON-LIGHTED DISPLAY



Covers ordered separately.

FEATURES

- Silver or gold contacts.
- 1, 2 or 4 poles.
- Toggle type paddle operators permanently installed in rectangular housings.
- Covers for the switch housing may be lighted or unlighted.
- UL recognized, CSA certified.
- Lamps can be furnished installed or ordered separately.
- Lamp circuit independent of switch circuit.

| | |
|---------------------|-------------|
| Electrical Data | page 11 |
| Paddle Covers | page 35 |
| Lamps and LEDs | page 46 |
| Accessories | page 45 |
| Mounting Dimensions | pages 47/50 |

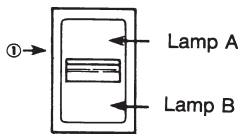


*AML23 Series: 1 pole and 2-pole only.

*AML23 ORDER GUIDE

| AML23 E | B | A | 2 | AA | 01 |
|--|-----------------------------|---|---|--|---|
| Housing Type | Operator/Bezel Color | Incandescent Lamp Type | Terminal Type | Circuitry Codes | Operating Action |
| AML23 E Rectangular Non-Lighted AML23 F Rectangular 1 Lamp Ckt. (A) AML23 G Rectangular 2 Lamp Ckts. (A & B) | B Black/Black | A No Lamp Installed B 6 V Lamp* C 14 V Lamp* E 28 V Lamp* | 2 .110 × .020 (Solder or Quick-Connect) 3 .025 × .025 (Printed Ckt., or Push-on) | Insert Code letters as shown in Circuitry Chart | Insert Code numbers from Operating Action Chart |

* Lamps will be installed per each lamp circuit specified in the Housing Type.



① The "MICRO SWITCH" identification is shown on this side of the switch housings.

Example: **AML23EBA2AA01**
Rectangular non-lighted paddle switch housing; black paddle and bezel; .110 × .020 terminals; with one circuit ON and one circuit OFF in each extreme operator position (maintained).

CIRCUITRY

| Silver Contacts | Gold Contacts | 2-Position | | 3-Position | | |
|---------------------------------|---------------|------------|--|------------|--|--|
| AA | BA | | | | | |
| AC | BC | | | | | |
| (Non-illuminated switches only) | | | | | | |
| CA | DA | | | | | |
| CC | DC | | | | | |
| (Non-illuminated switches only) | | | | | | |

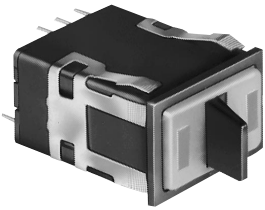
OPERATING ACTION

| 2-Position: | | |
|-------------|--------------|--------|
| Maint. | 01 None | Maint. |
| Mom. | 02 None | Maint. |
| Maint. | 03 None | Mom. |
| 3-Position: | | |
| Maint. | 04 Maint. | Maint. |
| Mom. | 05 Maint. | Mom. |
| Maint. | 06 Maint. | Mom. |
| Mom. | 07 Maint. | Maint. |

Manual Switches

Electronic Control Paddle

LED DISPLAY



Covers with LED "window" ordered separately.

FEATURES

- Identical to AML23, except furnished with one or two rectangular high efficiency LED's which give flush display area and wide angle indication.
- Available with or without diode protection for LED's.
- LED circuit independent of switch circuit.

| | |
|---------------------|-------------|
| Electrical Data | page 11 |
| Paddle Covers | page 36 |
| Lamps and LEDs | page 46 |
| Accessories | page 45 |
| Mounting Dimensions | pages 47/50 |

- 5 thru 24 VDC devices have internal resistor to maintain current at nominal 20 mA.
- UL recognized, CSA certified.



*AML25 Series: 1 pole and 2-pole only.

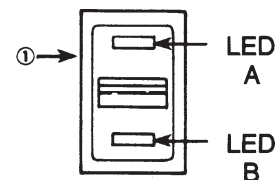
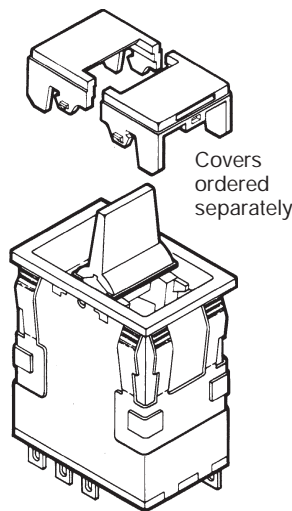
AML25 ORDER GUIDE

| Housing Type | Operator/ Bezel Color | LED Voltage | Terminal Type/ Diode Protection | Circuitry Codes | Operating Code | LED Color (LED A) | LED Color (LED B) |
|--|-------------------------|------------------|---|--|---|--------------------|--------------------|
| AML25 F Rectangular 1 LED | B Black/Black | B V* | 2 .110 x .020 (Solder or Q-C) | Insert code letters as shown in Circuitry Chart | Insert code numbers from Operating Action Chart | R Red | R Red |
| AML25 G Rectangular 2 LED's | | C 5 V | 3 .025 x .025 (Printed Ckt., or Push-On) | LED version available only with AA BA CA DA circuitry | | Y Yellow | Y Yellow |
| | | D 10 V | 8 .110 x .020 w/Diode protection | | | G Green | G Green |
| | | E 15 V | | | | X No LED | X No LED |
| | | F 24 V | | | | | |

* See LED application information for devices without current-limiting resistor, page 46.

Example: **AML25FBB2AA01RX**
Rectangular paddle switch; illuminated with one red LED, this device has a black paddle and bezel, and .110 x .020 terminals; with one circuit ON and one circuit OFF in each extreme operator position (maintained).

NOTE: For further information on replacement LED's, call the 800 number.



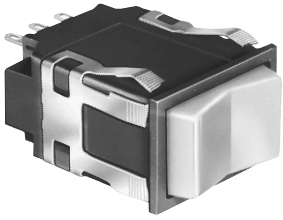
① The "MICRO SWITCH" identification is shown on this side of the switch housings.

Manuals

Manual Switches

Electronic Control Rocker

INCANDESCENT OR NON-LIGHTED DISPLAY



FEATURES

- Silver or gold contacts.
- 2 or 3 position operation.
- UL recognized, CSA certified.
- Lamps can be furnished installed or ordered separately.
- Lamp circuit independent of switch circuit.

| | |
|---------------------|-------------|
| Electrical Data | page 11 |
| Rockers | page 39 |
| Lamps | page 46 |
| Accessories | pages 44/45 |
| Mounting Dimensions | pages 47/50 |

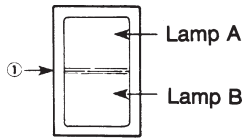


*AML24 Series: 1 pole and 2-pole only.

Rocker operators ordered separately.

AML24 ORDER GUIDE

| AML24 E | B | A | 2 | AA | 01 |
|--|--------------------|--|---|---|---|
| Housing Type | Bezel Color | Incandescent Lamp Type | Terminal Type | Circuitry Codes | Operating Action |
| AML24 E Rectangular Non-Lighted AML24 F Rectangular 1 Lamp Ckt. (A) AML24 G Rectangular 2 Lamp Ckts. | B Black | A No Lamp Installed B 6 V Lamp* C 14 V Lamp* E 28 V Lamp* | 2 .110 × .020 (Solder or Quick-Connect) 3 .025 × .025 (Printed Ckt., or Push-on) | Insert Code letters as shown in Circuitry Chart | Insert Code numbers from Operating Action Chart |



① The "MICRO SWITCH" identification is shown on this side of the switch housings.

* Lamps will be installed per each lamp circuit specified in the Housing Type.

Example: AML24EBA2AA01

Rectangular non-lighted rocker switch housing; black bezel; .110 × .020 terminals; with one circuit ON and one circuit OFF in each extreme operator position (maintained).

CIRCUITRY

| Silver Contacts | Gold Contacts | 2-Position | 3-Position | |
|---------------------------------------|---------------|------------|------------|--|
| AA | BA | | | |
| AC (Non-illuminated switches only) | BC | | | |
| CA | DA | | | |
| CC (Non-illuminated switches only) | DC | | | |

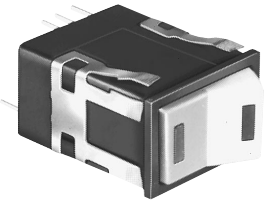
OPERATING ACTION

| 2-Position: | | | |
|--------------------|--------------|--------|--|
| Maint. | 01 None | Maint. | |
| Mom. | 02 None | Maint. | |
| Maint. | 03 None | Mom. | |
| 3-Position: | | | |
| Maint. | 04 Maint. | Maint. | |
| Mom. | 05 Maint. | Mom. | |
| Maint. | 06 Maint. | Mom. | |
| Mom. | 07 Maint. | Maint. | |

Manual Switches

Electronic Control Rocker

LED DISPLAY



Rocker operators ordered separately.
LEDs are not replaceable.

FEATURES

- Identical to AML24, except furnished with one or two rectangular high efficiency LED's which give flush display area and wide angle indication.
- Available with or without diode protection for LED's.
- LED circuit independent of switch circuit.

| | |
|---------------------|-------------|
| Electrical Data | page 11 |
| Rockers | page 40 |
| Lamps and LEDs | page 46 |
| Accessories | page 45 |
| Mounting Dimensions | pages 47/50 |

- 5 thru 24 VDC LED devices have internal resistor to maintain current at nominal 20 mA.
- UL recognized, CSA certified.



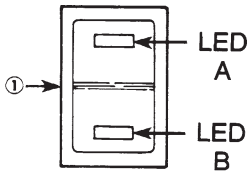
*AML26 Series: 1 pole and 2-pole only.

AML26 ORDER GUIDE

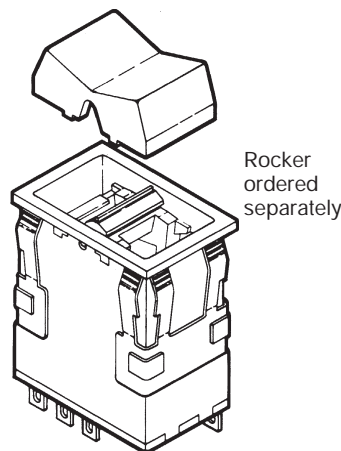
| AML26 F | B | B | 2 | AA | 01 | R | X |
|--------------------|-------------|-------------|--|--|---|-------------------|-------------------|
| Housing Type | Bezel Color | LED Voltage | Terminal Type/ Diode Protection | Circuitry Codes | Operating Action | LED Color (LED A) | LED Color (LED B) |
| AML26 F 1 LED | B Black | B V* | 2 .110 x .020 (Solder or Quick-Connect) | Insert code letters as shown in Circuitry Chart | Insert code numbers from Operating Action Chart | R Red | R Red |
| AML26 G 2 LED's | | C 5 V | 3 .025 x .025 (Printed Ckt., or Push-On) | LED version available only with AA, BA, CA, DA circuitry | | Y Yellow | Y Yellow |
| | | D 10 V | 8 .110 x .020 w/Diode for LED protection | | | G Green | G Green |
| | | E 15 V | | | | X No LED | X No LED |
| | | F 24 V | | | | | |

* See LED application information for devices without current-limiting resistor, page 46.

Example: **AML26FBB2AA01RX**
Rectangular rocker switch; illuminated with one LED, this device has a black bezel, .110 x .020 terminals; with one circuit ON and one circuit OFF in each extreme operator position (maintained).



① The "MICRO SWITCH" identification is shown on this side of the switch housings.

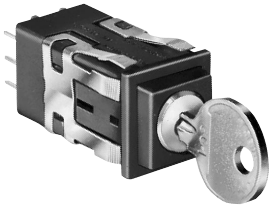


Manuals

Manual Switches

Electronic Control Keylock

NON-LIGHTED



FEATURES

- Enable control of access to computer peripherals, keyboards, point-of-sale terminals, and security systems which are locked when unattended; and other locations where tampering must be discouraged.
- 2 or 3 positions, maintained (90° throw) and momentary action (60° throw).
- 5-bit key combinations

| | |
|---------------------|-------------|
| Electrical Data | page 11 |
| Accessories | pages 44/45 |
| Mounting Dimensions | pages 47/50 |

- UL recognized, CSA certified.
- Static discharge protection (up to 20 kV when grounded).

AML27 ORDER GUIDE

| AML27 A | B | K | 2 | AA | 21 | BA |
|---------------------|--------------------|---------------------|--|---|--|--------|
| Housing Type | Bezel Color | Button Color | Terminal Type | Circuitry Codes (Each pole has double-throw) | Operation Action (Key out in center position, except where noted) | |
| AML27 A | B | K | 2 | Silver Contacts: AA 1 pole AC 2 pole | CCW | Center |
| Square housing | Black | Black | .110 x .020 (Solder or Quick-Connect) | Gold Contacts: BA 1 pole BC 2 pole | Center | CW |
| Non-Lighted | | | 3 | | None | 21 |
| | | | .025 x .025 (Printed Circuit or Push-On) | | Maint. | Maint. |
| | | | | | None | 22* |
| | | | | | Maint. | Maint. |
| | | | | | None | 23 |
| | | | | | Maint. | Mom. |
| | | | | | Maint. | 24 |
| | | | | | Mom. | Maint. |
| | | | | | Maint. | 25 |
| | | | | | Mom. | Mom. |
| | | | | | Maint. | 26** |
| | | | | | Maint. | Maint. |
| | | | | | Mom. | 27*** |
| | | | | | Maint. | Maint. |
| | | | | | Maint. | 28*** |
| | | | | | Maint. | Maint. |
| | | | | | Maint. | 29† |
| | | | | | Maint. | Maint. |
| | | | | | Maint. | 30† |
| | | | | | Maint. | Mom. |
| | | | | | Maint. | 31†† |
| | | | | | Maint. | Mom. |

Key Combinations

(Two Keys Furnished)

| | |
|----|----|
| BA | BS |
| BB | BT |
| BD | BV |
| BE | BW |

REPLACEMENT KEYS

One key per listing.

| Key Combination | Key Code | Catalog Listing |
|-----------------|----------|-----------------|
| BA | 110 | 30PA101-AML |
| BB | 109 | 30PA102-AML |
| BD | 107 | 30PA104-AML |
| BE | 106 | 30PA105-AML |
| BS | 117 | 30PA117-AML |
| BT | 118 | 30PA118-AML |
| BV | 119 | 30PA119-AML |
| BW | 120 | 30PA120-AML |

Specify different Key Combinations to acquire different keys, i.e.; AML27ABK2AA21BB and AML27ABK2AA21BE have different keys. AML27ABK2AA21BB and AML27ABK3BC25BB have identical interchangeable keys.

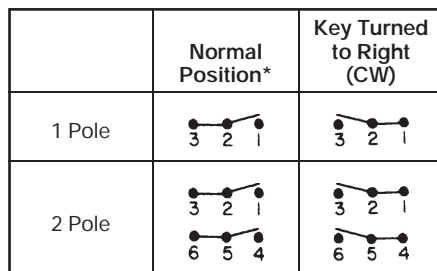
Example: **AML27ABK2AC28BB**
Square housing; black bezel and button; .110 x .020 terminals; 2-pole double-throw; silver contacts; 3-position maintained and key code "BB".

28 and 29 operating actions should be used with Key Combinations BA and BB.

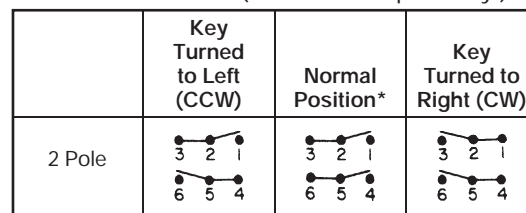
* Key out in both positions.
** Key out in all three positions.
*** Key out in center and CW positions.
† Key out in center and CCW positions.
†† Key out in CCW only.

CIRCUITRY

2-Position Switches:



3-Position Switches (Available in 2-pole only.)



* Circuit remains the same with key in or out.