

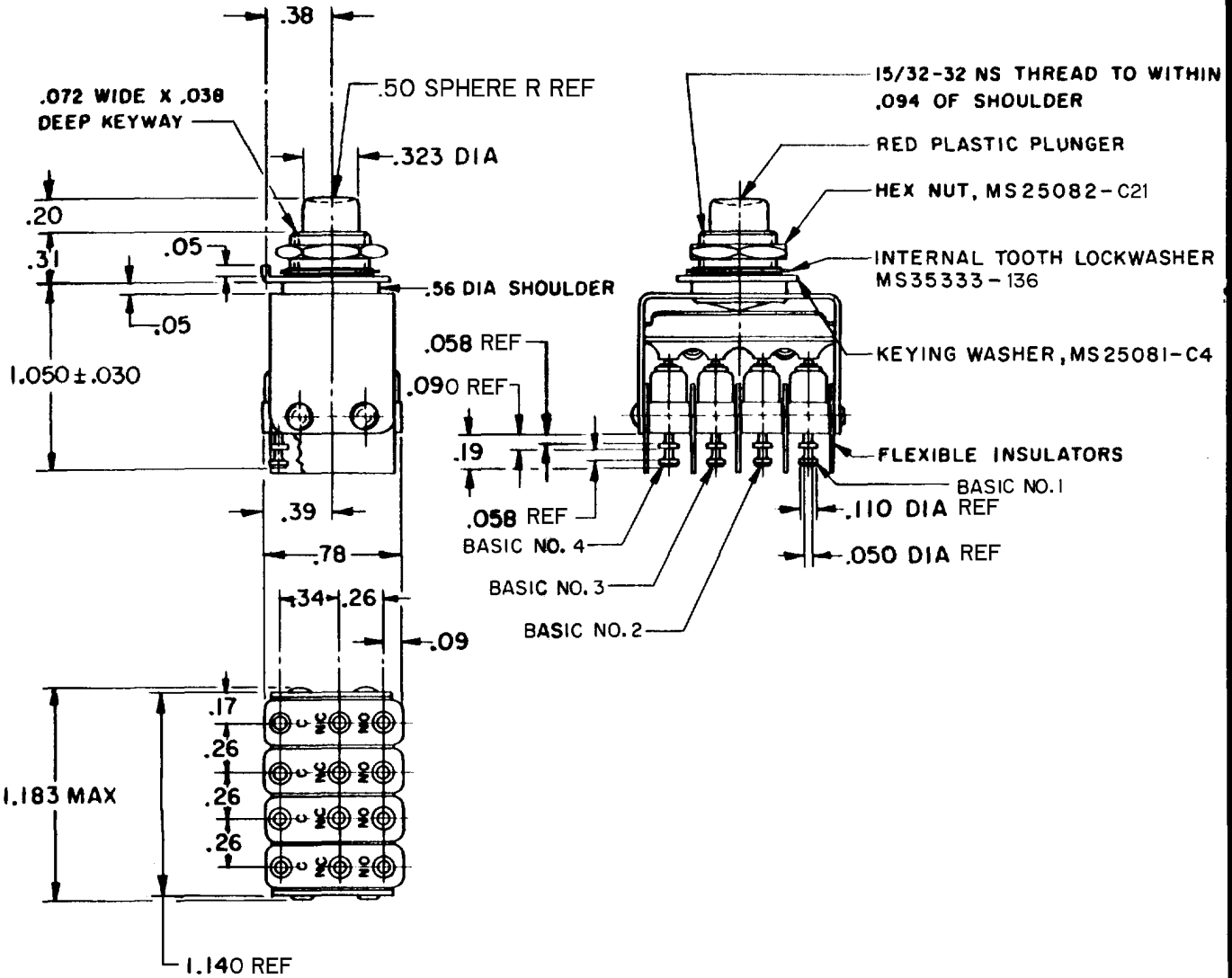
MICRO SWITCH

FREERPORT ILLINOIS, U.S.A
A DIVISION OF HONEYWELL
FED. MFG. CODE 91929

ASSEMBLY- PUSHBUTTON SWITCH

CATALOG LISTING
4PB717-T2

MILITARY P / N
M8805/23-004



NOTES

- 1- UNIT INCLUDES MS25085-2 TYPE BASIC SWITCH (4)
- 2- TERMINALS ARE PLATED FOR SOLDERING
- 3- SWITCHES DO NOT NECESSARILY OPERATE SIMULTANEOUSLY

THIS DRAWING COVERS A PROPRIETARY ITEM AND IS THE PROPERTY OF MICRO SWITCH, A DIVISION OF HONEYWELL. THIS DRAWING IS NOT TO BE COPIED OR USED WITHOUT THE APPROVAL OF MICRO SWITCH.

CHARACTERISTICS		ELECTRICAL DATA			SCALE FULL	
OPERATING FORCE-----	5.5 LB MAX	CONTACT ARRANGEMENT S P D T (4)			DO NOT SCALE PRINT	
TOTAL TRAVEL-----	.100 APPROX				UNLESS OTHERWISE NOTED DIMENSIONS ARE IN INCHES	
		SEA LEVEL		50,000 FT.	TOLERANCES ARE:	
		LOAD	28 VDC	115 VAC	28 VDC	ONE PLACE (.0) ±.030
		RESISTIVE	5	5	5	TWO PLACE (.00) ±.015
		INDUCTIVE	3	5	2.5	THREE PLACE (.000) ±.005
		LAMP	2.4	1.5	2.4	ANGLES ±
						WEIGHT .075 LB MAX

4PB717-T2
 PAGE 1 OF 1
M
 DRAWING NUMBER
8
 ISSUE
 JAF 28 OCT 98
 RELEASE NO. PR785
 CHECK
 EMISSIONS
 A PR785 SRH 26 JUNE 69
 B C026314 SRH 1 SEPT 69
 C C027631 OMW 9 JUN 70
 D C027719 MBS 10 AUG 70
 E C032757 RE R 17 NOV 73
 F CO-93593 PPF 28 OCT 98
 G CO-94273 GJW 15 APR 99
 O MW 19 AUG 68
 DRAWN
 FORMTEK FO-50378-1A