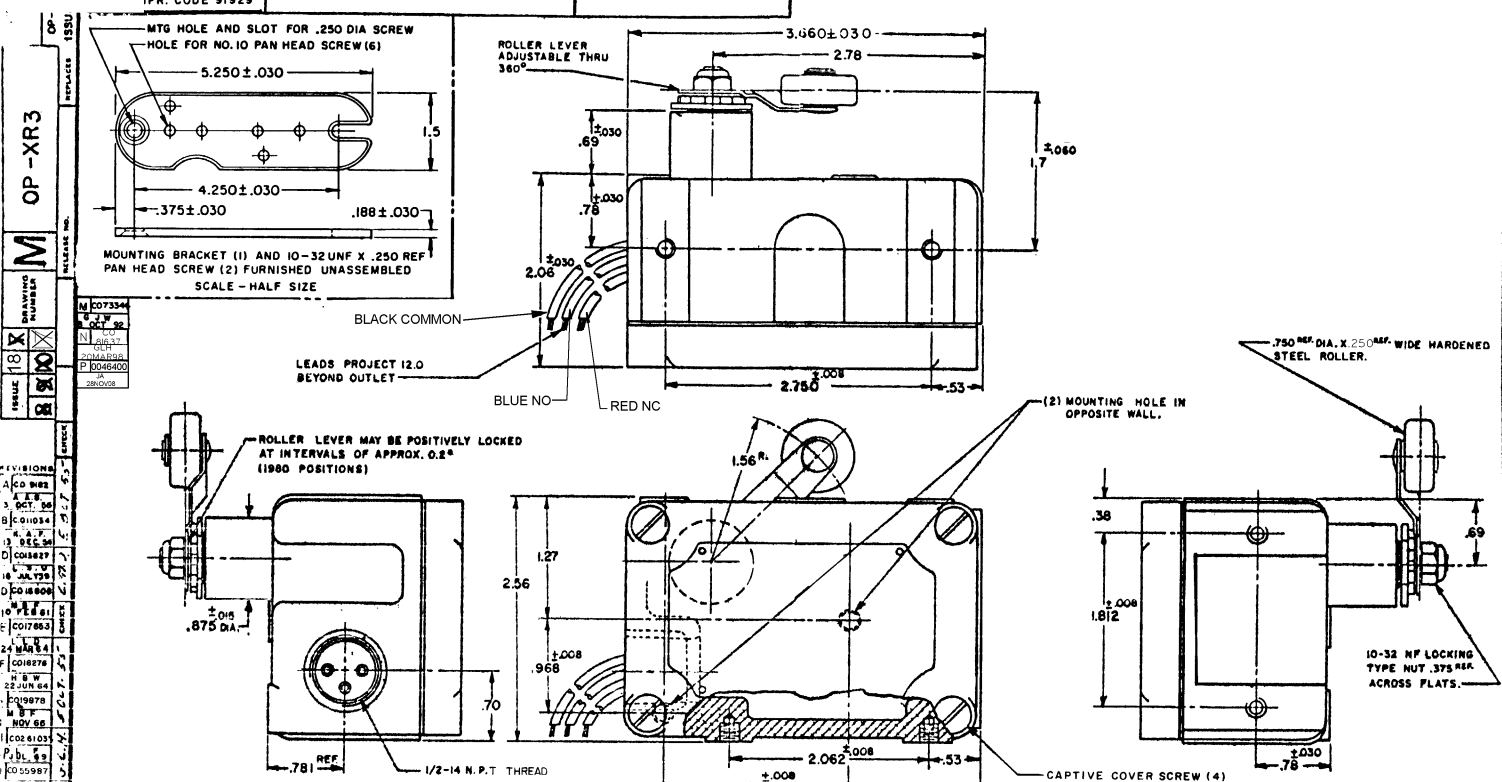


MICRO SWITCH
 IFR. CODE 91929

SWITCH - ENCLOSED

OP-XR3

THIS DRAWING COVERS A PROPRIETARY ITEM AND IS THE PROPERTY OF MICRO SWITCH, A DIVISION OF HONEYWELL. THIS DRAWING IS NOT TO BE COPIED OR USED WITHOUT THE APPROVAL OF MICRO SWITCH.



OP-XR3
 M
 DRAWING NUMBER
 18 X
 8 X
 REVISIONS
 1
 2
 3
 4
 5
 6
 7
 8
 9
 10
 11
 12
 13
 14
 15
 16
 17
 18
 19
 20
 21
 22
 23
 24
 25
 26
 27
 28
 29
 30
 31
 32
 33
 34
 35
 36
 37
 38
 39
 40
 41
 42
 43
 44
 45
 46
 47
 48
 49
 50
 51
 52
 53
 54
 55
 56
 57
 58
 59
 60
 61
 62
 63
 64
 65
 66
 67
 68
 69
 70
 71
 72
 73
 74
 75
 76
 77
 78
 79
 80
 81
 82
 83
 84
 85
 86
 87
 88
 89
 90
 91
 92
 93
 94
 95
 96
 97
 98
 99
 100

CHARACTERISTICS	ELECTRICAL DATA	SCALE FULL
RIGHT HAND ROTATION (CLOCKWISE) OPERATING FORCE --- 3/4 LB. MAX. PRETRAVEL --- .219 MAX. (8°) DO NOT OVERTRAVEL MORE THAN 90° -- RESET -- LEFT HAND ROTATION (COUNTERCLOCKWISE) OPERATING FORCE --- 3/4 LB. MAX. PRETRAVEL --- .219 MAX. (8°) OVERTRAVEL --- .030 MIN. (1°) BASIC SWITCH REPLACEMENT BZ-RX9	CONTACT ARRANGEMENT SINGLE POLE - DOUBLE THROW MAINTAINED CONTACT - L96 - 15 A - 125, 250, OR 480 VAC 1/2 A - 125 VDC; 1/4 A - 250 VDC 1/8 HP - 125 VAC; 1/4 HP - 250 VAC	DO NOT SCALE PRINT UNLESS OTHERWISE SPECIFIED DIMENSIONS ARE IN INCHES TOLERANCES ARE: ONE PLACE (.01) 3.000 TWO PLACE (.001) 3.000 THREE PLACE (.000) 3.000 ANGLES WEIGHT

NOTE -
 1 - (8) MOUNTING SCREW HOLES, 10-32 NF-28 THREADS X .219 REF DEEP
 2 - SEALED CONSTRUCTION PROVIDES SPLASH RESISTANCE.