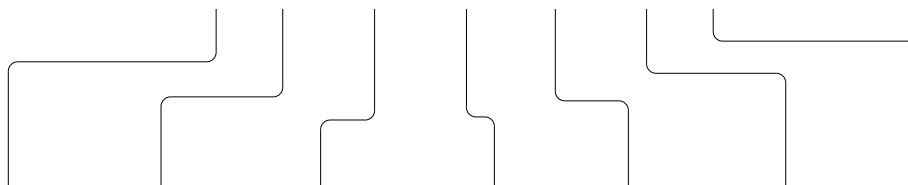


DUAL ENTRY SOLENOID KEY OPERATED SAFETY INTERLOCK NOMENCLATURE

GK



BODY / INDICATOR	CONDUIT / SEAL	BASIC II	HEAD	KEY	TYPE / OVER-RIDE	SOLENOID VOLTAGE
L HEAD TO LEFT - WITH INDICATORS	A 1/2 NPT - VITON SEALS	2 2 SNAP ACTION DPDT	L OPENING TO FRONT AND TOP	6 STRAIGHT	A SOLENOID UNLOCK WITH SCREWDRIVER	1 12 VDC
R HEAD TO RIGHT - WITH INDICATORS	B PG 13.5 - VITON SEALS	3 2 SLOW ACTING SPDT BBM	M OPENING TO RIGHT AND TOP	7 90 DEGREE	S SLOT OVER-RIDE	2 24 VDC
F HEAD TO LEFT - WITHOUT INDICATORS	C 20 MM - VITON SEALS	4 SLOW ACTING 2 NC	N OPENING TO BACK AND TOP	8 UP - DOWN, SPRING LOADED	B SOLENOID UNLOCK WITHOUT OVER-RIDE	3 48 VDC
G HEAD TO RIGHT - WITHOUT INDICATORS	D PF 1/2 - VITON SEALS	10 SLOW ACTING 4 NC	P OPENING TO LEFT AND TOP	9 SIDE - SIDE, SPRING LOADED	S SOLENOID LOCK WITH SCREWDRIVER	4 120 VAC
	E 1/2 NPT - BUNA-N SEALS	12 SLOW ACTING 2 NC - 1 NO BBM		X NO KEY	T SLOT OVER-RIDE	6 240 VAC
	F PG 13.5 - BUNA-N SEALS	14 SLOW ACTING 2 NC - 2 NO BBM - GOLD				
	G 20 MM - BUNA-N SEALS	15 SLOW ACTING 2 NC - 2 NO BBM - GOLD				
	H PF 1/2 - BUNA-N SEALS	16 SLOW ACTING 3 NC - 1 NO BBM				
		30 2 SLOW ACTING 4 NC - GOLD				
		32 2 SLOW ACTING 2 NC - 1 NO BBM - GOLD				
		34 2 SLOW ACTING 2 NC - 2 NO BBM - GOLD				
		36 2 SLOW ACTING 3 NC - 1 NO BBM - GOLD				
		40 2 SLOW ACTING 4 NC				
		42 2 SLOW ACTING 2 NC - 1 NO BBM				
		44 2 SLOW ACTING 2 NC - 2 NO BBM				
		46 2 SLOW ACTING 3 NC - 1 NO BBM				

NOTES

- 1 - ZINC DIECAST BODY AND HEAD WITH STEEL COVER. BODY, HEAD AND COVER FINISHED WITH EPOXY PAINT.
- 2 - PROVIDED WITH PLASTIC SNAP FIT COVER TO PLUG UNUSED KEY ENTRY WINDOW.
- 3 - THE LEFT INDICATOR IS GREEN AND THE RIGHT INDICATOR IS RED. NOT PRESENT ON BODY/INDICATOR CODES F OR G.
- 4 - MAXIMUM OPERATING FREQUENCY (Fmax) : 100 OPS/MIN
- 5 - INSERTION FORCE : 35 N
8 LB
EXTRACTION FORCE : 28 N
6 LB
MAXIMUM SOLENOID LOCKING FORCE : 1000 N
224 LB
- 6 - ROTATE 1/4 TURN CLOCKWISE TO UNLOCK DEVICES WITH HEAD TO LEFT, SOLENOID UNLOCK AND DEVICES WITH HEAD TO RIGHT, SOLENOID LOCK. ROTATE 1/4 TURN COUNTERCLOCKWISE TO UNLOCK DEVICES WITH HEAD TO LEFT, SOLENOID LOCK AND DEVICES WITH HEAD TO RIGHT, SOLENOID UNLOCK.
- 7 - NOT PRESENT ON TYPE/OVER-RIDE CODES B OR T.
- 8 - SWITCH MUST OPERATE BEFORE REACHING MINIMUM INSERTION DISTANCE.
- 9 - T-15 TAMPERPROOF TORX DRIVER BIT PROVIDED.
- 10 - ELECTRICAL RATINGS ARE FOR BASIC SWITCHES.
- 11 - MINIMUM SOLENOID VOLTAGE : 80% DC, 85% AC OF RATED VOLTAGE
MAXIMUM SOLENOID VOLTAGE : 110% OF RATED VOLTAGE
SOLENOID POWER : 12 WATTS NOMINAL
- 12 - SEE PAGES 10, 11, 12 AND 13 FOR CIRCUIT DIAGRAMS
- 13 - NO CHANGES CAN BE MADE TO THIS DRAWING WITHOUT JOINT FREIGHT / WAREHOUSE APPROVAL.
- 14 - THE LEFT INDICATOR IS YELLOW AND THE RIGHT INDICATOR IS RED
- 15 - 10-PIN CONNECTOR, BRAD HARRISON PART NO.3R1006AZ1F010 OR EQUIVALENT OR EQUIVALENT
- 16 - 4-PIN CONNECTOR, WOODHEAD PART NO.80599-19 OR MOLEX PART NO.08631M2
- 17 - 5-PIN CONNECTOR, BRAD HARRISON PART NO.41310 OR EQUIVALENT
- 18 - CONNECTOR INSTALLED IN BOTTOM CONDUIT HOLE
- 19 - CONNECTOR INSTALLED IN SIDE CONDUIT HOLE
- 20 - "S" MARK APPROVAL APPLICABLE ONLY FOR GKLE4XXXX, GKLE46XXXX, GKRE46XXXX AND GKRE48XXXX SERIES ONLY

ELECTRICAL RATING				ENVIRONMENTAL RATINGS		APPROVALS
AC	DC			IP48 NEMA 1, 4, 6P, 12 & 13		
A300	AC 15	Q300	DC 13	TEMP RANGE	-25°C TO 40°C	
Ue	Ie	Ue	Ie	STORAGE	-13°F TO 104°F	
(VOLTS)	(AMPS)	(VOLTS)	(AMPS)		-40°C TO 120°C	
120	6	24	2.9		-40°F TO 248°F	
240	3	125	.55	SHOCK: 50G PER IEC 68-2-27		
		250	.27	VIBRATION: 10G PER IEC 68-2-6		
11b - 10 A						

THIRD ANGLE PROJECTION

SCALE: 1:1

DO NOT SCALE PRINT

TOLERANCES UNLESS OTHERWISE SPECIFIED

THIS DRAWING COVERS A PROPRIETARY ITEM AND IS THE PROPERTY OF MICRO SWITCH, A DIVISION OF HONEYWELL. THIS DRAWING IS NOT TO BE COPIED OR USED WITHOUT THE APPROVAL OF MICRO SWITCH.

THIS DRAWING IS NOT TO BE COPIED OR USED WITHOUT THE APPROVAL OF MICRO SWITCH.

DATE: 08/11/03

DESIGNER: J. J. ...

CHECKED: ...

APPROVED: ...

WEIGHT: 1.5 kg / 3.3 lb

THIS DRAWING COVERS A PROPRIETARY ITEM AND IS THE PROPERTY OF MICRO SWITCH, A DIVISION OF HONEYWELL. THIS DRAWING IS NOT TO BE COPIED OR USED WITHOUT THE APPROVAL OF MICRO SWITCH.

THIS DRAWING IS NOT TO BE COPIED OR USED WITHOUT THE APPROVAL OF MICRO SWITCH.

DATE: 08/11/03

DESIGNER: J. J. ...

CHECKED: ...

APPROVED: ...

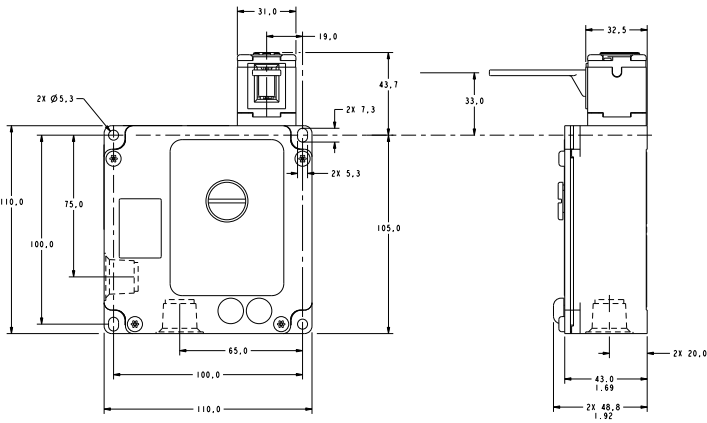
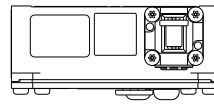
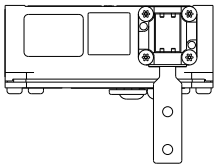
WEIGHT: 1.5 kg / 3.3 lb

ANSI Y14.5M-1982 APPLICABLE

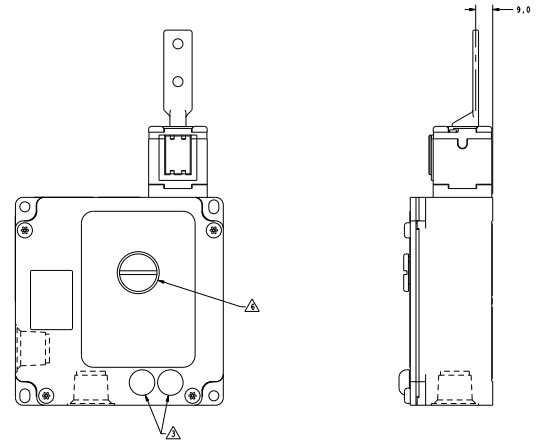
MICRO SWITCH
Honeywell Division

SWITCH - DOOR INTERLOCK

GK SERIES CHART 4



FRONT KEY ENTRY



TOP KEY ENTRY

BODY / INDICATOR CODES R OR G

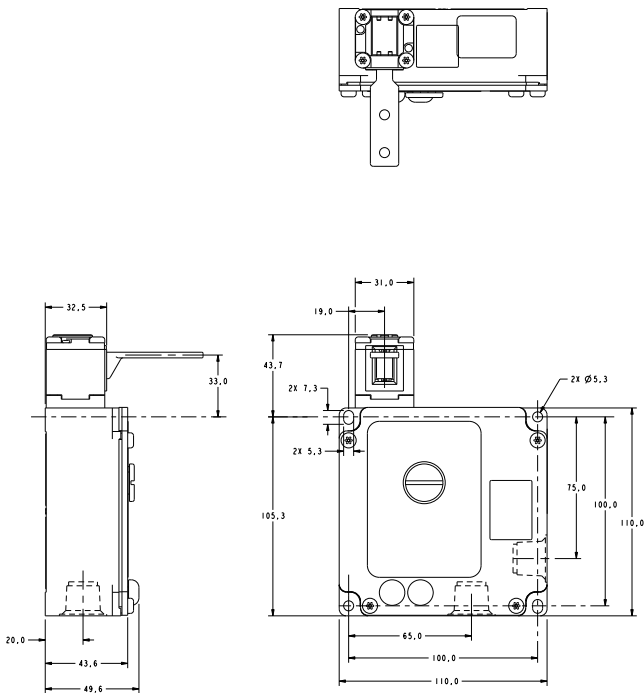
THIS DRAWING COVERS A PROPRIETARY ITEM AND IS THE PROPERTY OF MICRO SWITCH, A DIVISION OF HONEYWELL. THIS DRAWING IS NOT TO BE COPIED OR USED WITHOUT THE APPROVAL OF MICRO SWITCH.
 THE MICRO SWITCH COMPANY
 MICRO SWITCH
 Honeywell Division

SWITCH - DOOR INTERLOCK

GK SERIES CHART 4

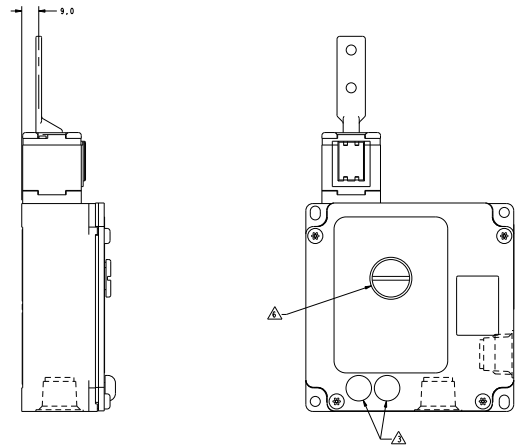
ANSI Y14.5M-1982 APPLIES

FIRST ANGLE PROJECTION	
SCALE	1:1
DO NOT SCALE PRINT	
TOLERANCES	
UNLESS SPECIFIED OTHERWISE ALL DIMENSIONS ARE IN MILLIMETERS	
FINISH	AS MANUFACTURED
UNIT	MILLIMETERS
WEIGHT	1.5 kg / 3.3 lb



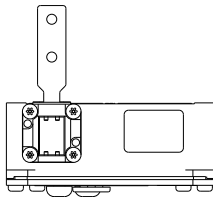
FRONT KEY ENTRY

BODY / INDICATOR CODES L OR F

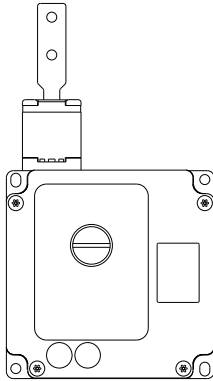


TOP KEY ENTRY

THIS DRAWING COVERS A PROPRIETARY ITEM AND IS THE PROPERTY OF MICRO SWITCH, A DIVISION OF HONEYWELL. THIS DRAWING IS NOT TO BE COPIED OR USED WITHOUT THE APPROVAL OF MICRO SWITCH.																							
SEE HONEYWELL WEBSITE FOR CAD FILE	CONTACT TESTING																						
MICRO SWITCH Honeywell Division	SWITCH - DOOR INTERLOCKING GK SERIES CHART 4																						
ANSI Y14.5M-1982 APPLIES	<table border="1"> <tr> <td colspan="2">FIRST ANGLE PROJECTION</td> </tr> <tr> <td>SCALE</td> <td>1:1</td> </tr> <tr> <td colspan="2">DO NOT SCALE PRINT</td> </tr> <tr> <td colspan="2">TOLERANCES</td> </tr> <tr> <td>UNLESS SPECIFIED OTHERWISE</td> <td>±0.15</td> </tr> <tr> <td>POSITION</td> <td>±0.10</td> </tr> <tr> <td>FORM</td> <td>±0.10</td> </tr> <tr> <td>FINISH</td> <td>±0.10</td> </tr> <tr> <td>ASSEMBLY</td> <td>±0.10</td> </tr> <tr> <td>WELDER UNITS</td> <td>±0.10</td> </tr> <tr> <td>WEIGHT</td> <td>1.5 kg / 3.3 lb</td> </tr> </table>	FIRST ANGLE PROJECTION		SCALE	1:1	DO NOT SCALE PRINT		TOLERANCES		UNLESS SPECIFIED OTHERWISE	±0.15	POSITION	±0.10	FORM	±0.10	FINISH	±0.10	ASSEMBLY	±0.10	WELDER UNITS	±0.10	WEIGHT	1.5 kg / 3.3 lb
FIRST ANGLE PROJECTION																							
SCALE	1:1																						
DO NOT SCALE PRINT																							
TOLERANCES																							
UNLESS SPECIFIED OTHERWISE	±0.15																						
POSITION	±0.10																						
FORM	±0.10																						
FINISH	±0.10																						
ASSEMBLY	±0.10																						
WELDER UNITS	±0.10																						
WEIGHT	1.5 kg / 3.3 lb																						

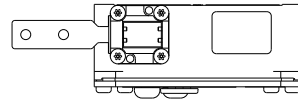
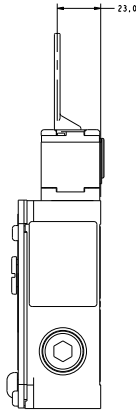


WITH KEY IN FRONT ENTRY POSITION

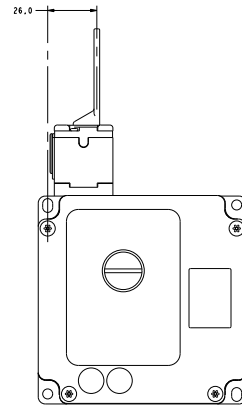


WITH KEY IN TOP ENTRY POSITION

HEAD CODE N

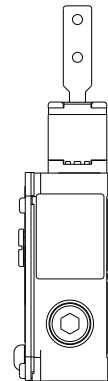


WITH KEY IN FRONT ENTRY POSITION



WITH KEY IN TOP ENTRY POSITION

HEAD CODE P

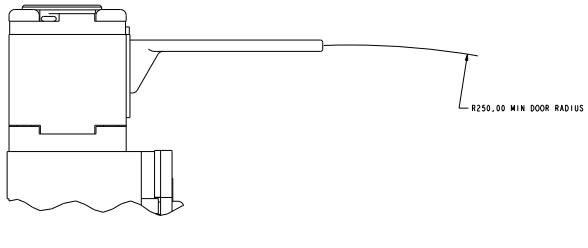
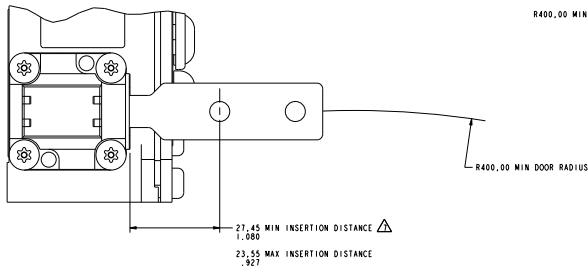
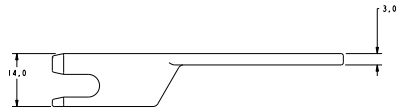
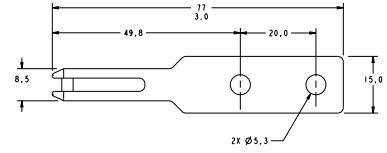


FIRST ANGLE PROJECTION	
SCALE	1:1
DO NOT SCALE PRINT	
TOLERANCES	
UNLESS SPECIFIED OTHERWISE	FRACTIONAL DECIMAL ANGLES
SIZE	FINISH
SMALLER THAN 25.4 (1.0)	AS SHOWN
25.4 TO 50.8 (1.0 TO 2.0)	0.4 (0.0156)
50.8 TO 127 (2.0 TO 5.0)	0.4 (0.0156)
127 TO 254 (5.0 TO 10.0)	0.4 (0.0156)
254 TO 508 (10.0 TO 20.0)	0.4 (0.0156)
508 TO 1270 (20.0 TO 50.0)	0.4 (0.0156)
DIMENSIONAL UNITS	
UNLESS SPECIFIED OTHERWISE	AS SHOWN
WEIGHT 1.5 KG / 3.3 LB	

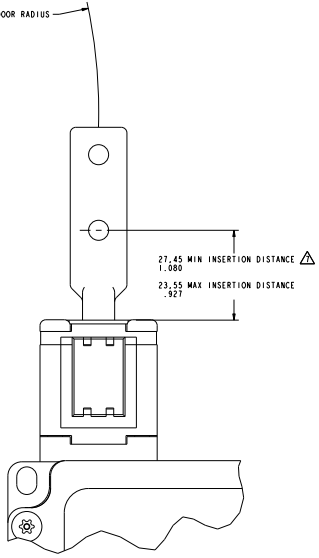
THIS DRAWING COVERS A PROPRIETARY ITEM AND IS THE PROPERTY OF MICRO SWITCH, A DIVISION OF HONEYWELL. THIS DRAWING IS NOT TO BE COPIED OR USED WITHOUT THE APPROVAL OF MICRO SWITCH.
 SEE HOW-TO USE WITH CONTACT LISTING
MICROSWITCH SWITCH - DOOR INTERLOCK
 Honeywell Division **MGK SERIES CHART 4**

ANSI Y14.5M-1982 APPLIES

KEY CODE 6



FRONT KEY ENTRY

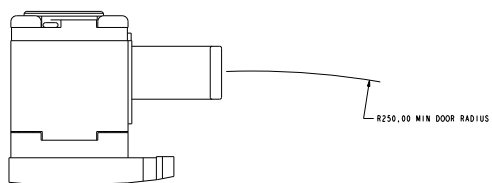
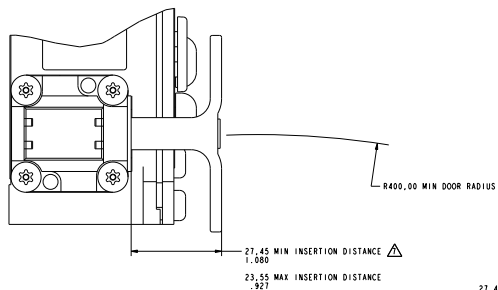
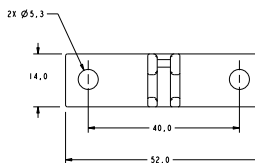
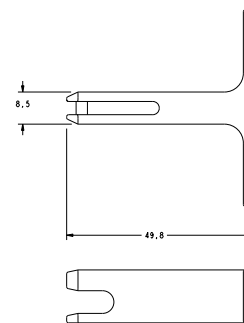


TOP KEY ENTRY

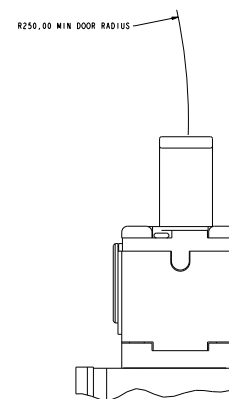
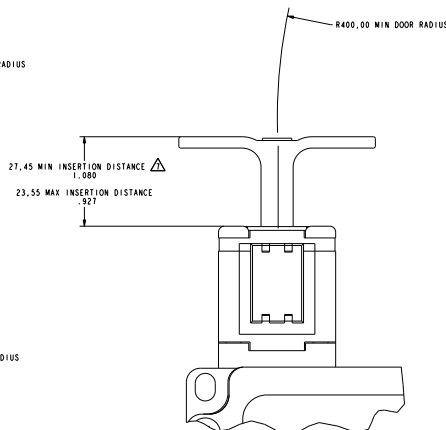
THIS DRAWING COVERS A PROPRIETARY ITEM AND IS THE PROPERTY OF MICRO SWITCH, A DIVISION OF HONEYWELL. THIS DRAWING IS NOT TO BE COPIED OR USED WITHOUT THE APPROVAL OF MICRO SWITCH.
SEE THE CASE FILE FOR CAD FILE INFORMATION.
MIGROSWITCH
Honeywell Division
SWITCH - DOOR INTERLOCK
GK SERIES CHART 4

THIRD ANGLE PROJECTION	
SCALE	DO NOT SCALE PRINT
TOLERANCES	
UNLESS SHOWN OTHERWISE	ALL DIMENSIONS ARE IN MILLIMETERS UNLESS OTHERWISE SPECIFIED
FINISHES	SEE DRAWING
UNLESS SHOWN OTHERWISE	ALL DIMENSIONS ARE IN MILLIMETERS UNLESS OTHERWISE SPECIFIED
WEIGHT	1.5 KG / 3.3 LB

KEY CODE 7



FRONT KEY ENTRY



TOP KEY ENTRY

THIS DRAWING COVERS A PROPRIETARY ITEM AND IS THE PROPERTY OF MICRO SWITCH, A DIVISION OF HONEYWELL. THIS DRAWING IS NOT TO BE COPIED OR USED WITHOUT THE APPROVAL OF MICRO SWITCH.
 THE MICRO SWITCH COMPANY
 MICRO SWITCH
 Honeywell Division

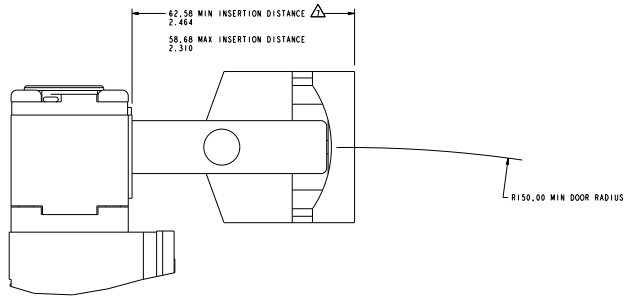
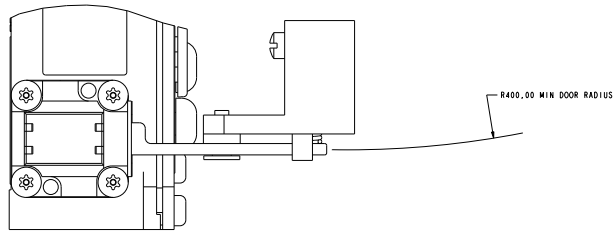
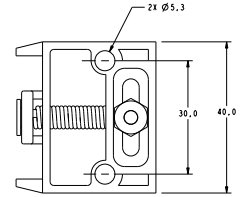
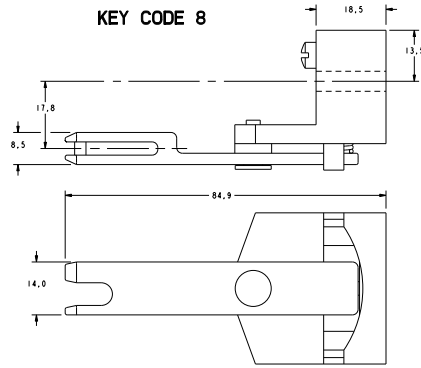
SWITCH - DOOR INTERLOCK

GK SERIES CHART 4

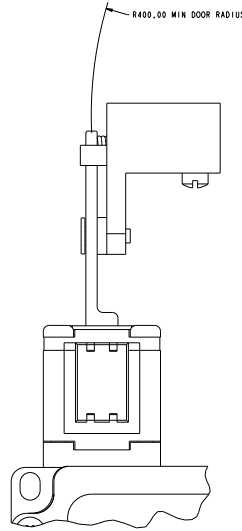
ANSI Y14.5M-1982 APPLIES

THIRD ANGLE PROJECTION	
SCALE	DO NOT SCALE PRINT
TOLERANCES	
UNLESS OTHERWISE SPECIFIED	
FRONT VIEW	±.000
OTHER VIEWS	±.005
FINISH	AS SHOWN
UNLESS OTHERWISE SPECIFIED	AS SHOWN
WEIGHT	1.5867 / 3.318

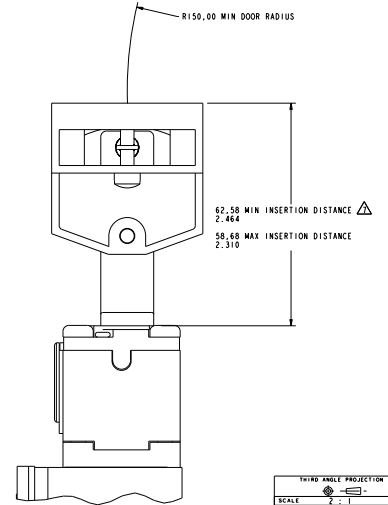
KEY CODE 8



FRONT KEY ENTRY



TOP KEY ENTRY



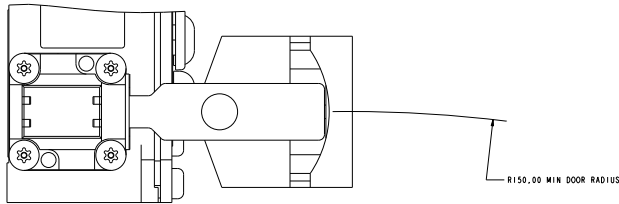
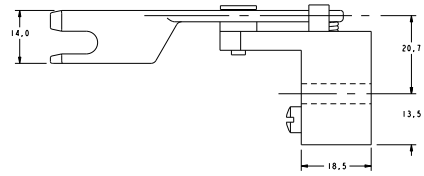
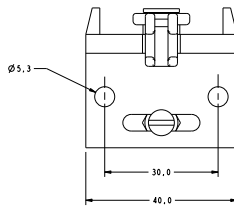
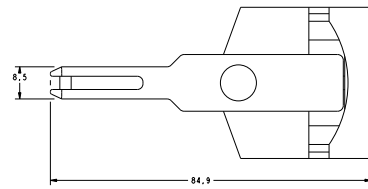
THIRD ANGLE PROJECTION

SCALE	DO NOT SCALE PRINT
TOLERANCES	
UNLESS SHOWN OTHERWISE DIMENSIONS ARE IN MILLIMETERS	
UNITS	
DECIMALS	
FRACTIONS	
ANGLE UNITS	
WEIGHT	

THIS DRAWING COVERS A PROPRIETARY ITEM AND IS THE PROPERTY OF MICRO SWITCH, A DIVISION OF HONEYWELL. THIS DRAWING IS NOT TO BE COPIED OR USED WITHOUT THE APPROVAL OF MICRO SWITCH.
 TYPED COPY ONLY
MICRO SWITCH **SWITCH - DOOR INTERLOCK**
 Honeywell Division **GK SERIES CHART 4**

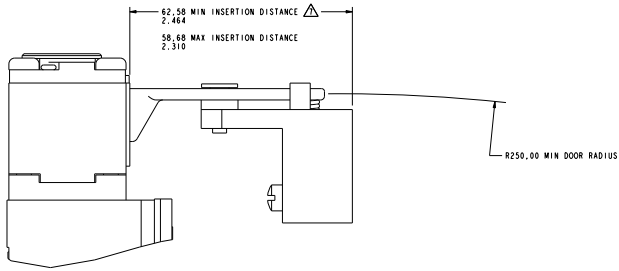
ANSI Y14.5M-1982 APPLIES

KEY CODE 9

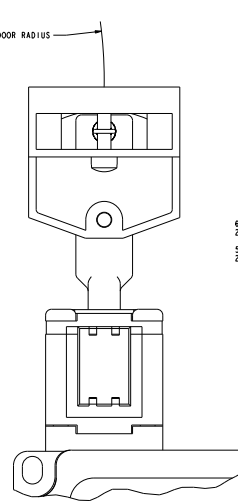


R150.00 MIN DOOR RADIUS

R250.00 MIN DOOR RADIUS



FRONT KEY ENTRY



R250.00 MIN DOOR RADIUS

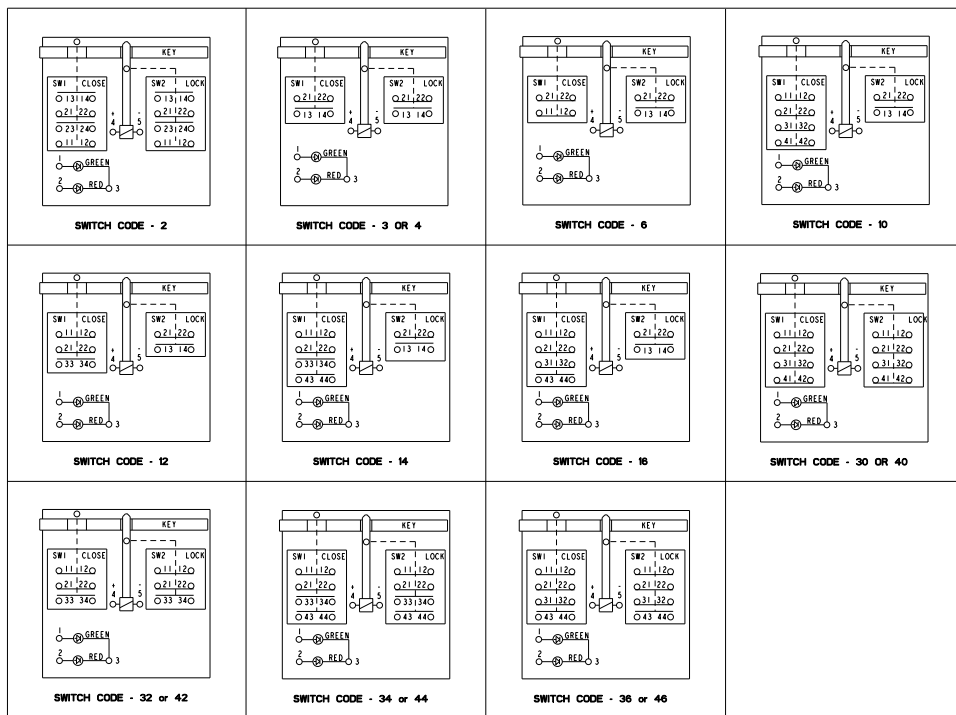
62.58 MIN INSERTION DISTANCE Δ
2.464
58.68 MAX INSERTION DISTANCE
2.310

TOP KEY ENTRY

THIS DRAWING COVERS A PROPRIETARY ITEM AND IS THE PROPERTY OF MICRO SWITCH, A DIVISION OF HONEYWELL. THIS DRAWING IS NOT TO BE COPIED OR USED WITHOUT THE APPROVAL OF MICRO SWITCH.
 MICRO SWITCH
 Honeywell Division
 SWITCH - DOOR INTERLOCK
 GK SERIES CHART 4

ANSI Y14.5M-1982 APPLIES

FIRST ANGLE PROJECTION	
SCALE	1:1
DO NOT SCALE PRINT	
TOLERANCES	
UNLESS SPECIFIED OTHERWISE	
FINISH	AS SHOWN
UNIT	MILLIMETERS
WEIGHT	1.5867 3.318



BODY / INDICATOR CODES - L OR R
 TYPE / OVERRIDE CODES - A OR B
 DIAGRAMS SHOWN WITH KEY INSERTED AND LOCKED

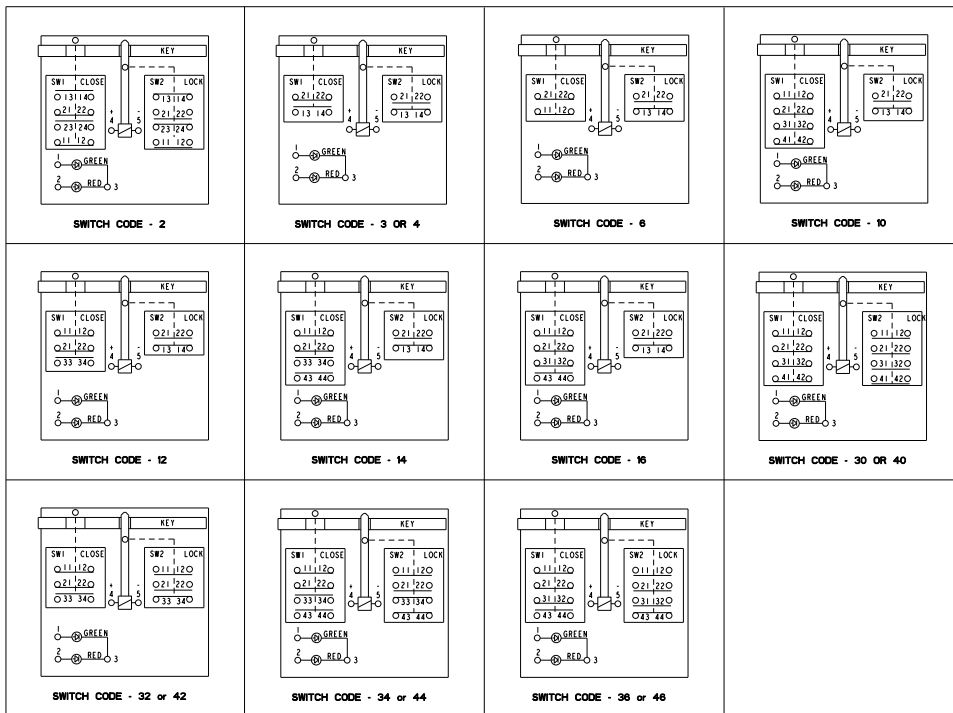
THIS DRAWING COVERS A PROPRIETARY ITEM AND IS THE PROPERTY OF MICRO SWITCH, A DIVISION OF HONEYWELL. THIS DRAWING IS NOT TO BE COPIED OR USED WITHOUT THE APPROVAL OF MICRO SWITCH.
 SEE THE CASE FILE FOR CONTACT LISTING.
MICRO SWITCH
 Honeywell Division

SWITCH - DOOR INTERLOCK

MK SERIES CHART 4

THIRD ANGLE PROJECTION	
SCALE	1:1
DO NOT SCALE PRINT	
TOLERANCES UNLESS OTHERWISE SPECIFIED	
FINISH	AS SHOWN
UNIT	MM
WEIGHT	1.50G / 3.31B

ANSI Y14.5M-1982 APPLIES



BODY / INDICATOR CODES - L OR R
TYPE / OVER-RIDE CODES - S OR T
DIAGRAMS SHOWN WITH KEY INSERTED AND LOCKED

THIRD ANGLE PROJECTION	
SCALE	1:1
DO NOT SCALE PRINT	
TOLERANCES	
UNLESS SPECIFIED OTHERWISE	
DIMENSIONS ARE IN MILLIMETERS UNLESS OTHERWISE SPECIFIED	
DATE	11/11/00
DESIGNED BY	11/11/00
CHECKED BY	11/11/00
APPROVED BY	11/11/00
WEIGHT	1.56g / 3.31g

THIS DRAWING COVERS A PROPRIETARY ITEM AND IS THE PROPERTY OF MICRO SWITCH, A DIVISION OF HONEYWELL. THIS DRAWING IS NOT TO BE COPIED OR USED WITHOUT THE APPROVAL OF MICRO SWITCH.

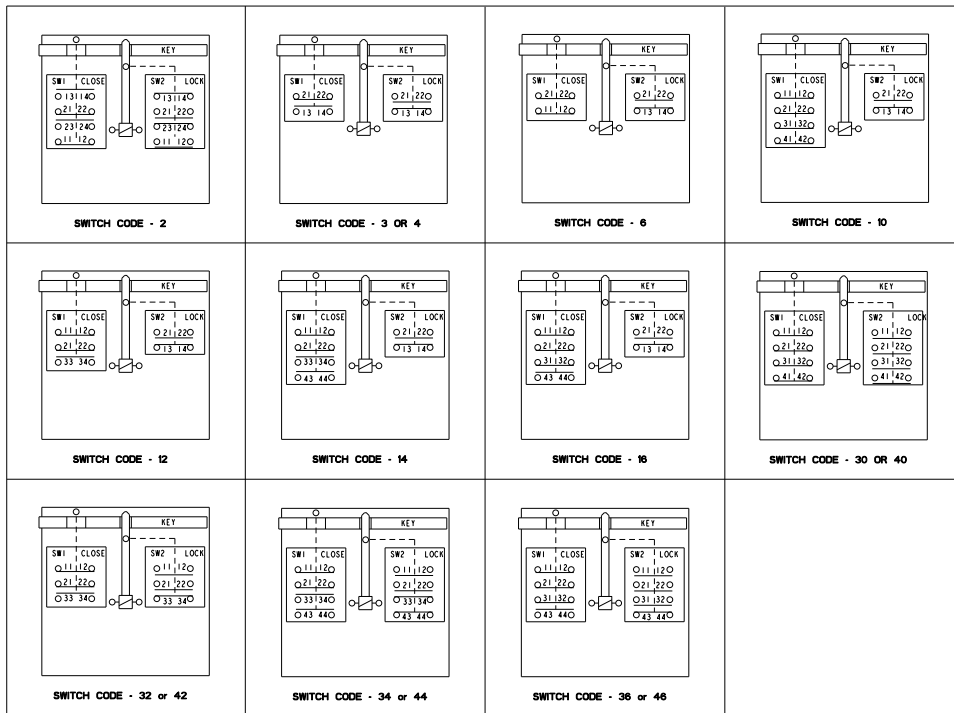
SEE THE CASE FILE FOR OVER-RIDE LISTING

MICRO SWITCH
Honeywell Division

SWITCH - DOOR INTERLOCK

MK SERIES CHART 4

ANSI Y14.5M-1982 APPLIES



BODY / INDICATOR CODES - F OR G
 TYPE / OVERRIDE CODES - S OR T
 DIAGRAMS SHOWN WITH KEY INSERTED AND LOCKED

THIS DRAWING COVERS A PROPRIETARY ITEM AND IS THE PROPERTY OF MICRO SWITCH, A DIVISION OF HONEYWELL. THIS DRAWING IS NOT TO BE COPIED OR USED WITHOUT THE APPROVAL OF MICRO SWITCH.
 7500 WOLF CREEK BLVD
 MICRO SWITCH
 Honeywell Division

SWITCH - DOOR INTERLOCK

MK SERIES CHART 4

THIRD ANGLE PROJECTION	
SCALE	1:1
DO NOT SCALE PRINT	
TOLERANCES	
UNLESS SPECIFIED OTHERWISE REFER TO DRAWING SPECIFICATIONS	
DATE	BY
REV	APP
WEIGHT	1.586 / 3.318

ANSI Y14.5M-1982 APPLIES

MICRO SWITCH
a Honeywell Division
FED. MFG. CODE 91929

CATALOG LISTING
SWITCH-DOOR INTERLOCK

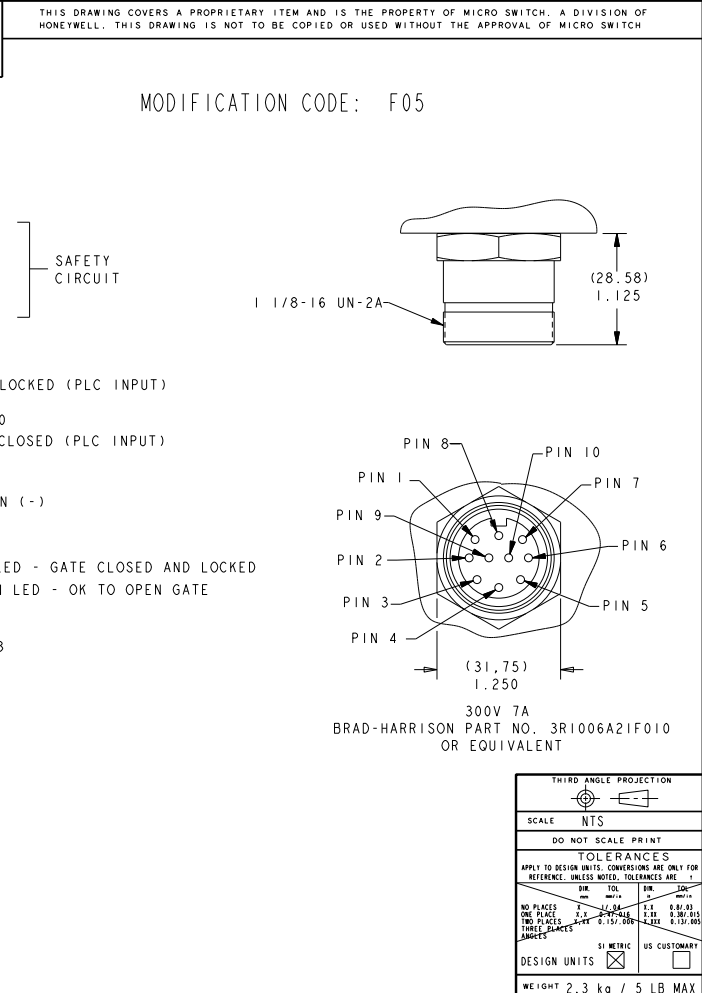
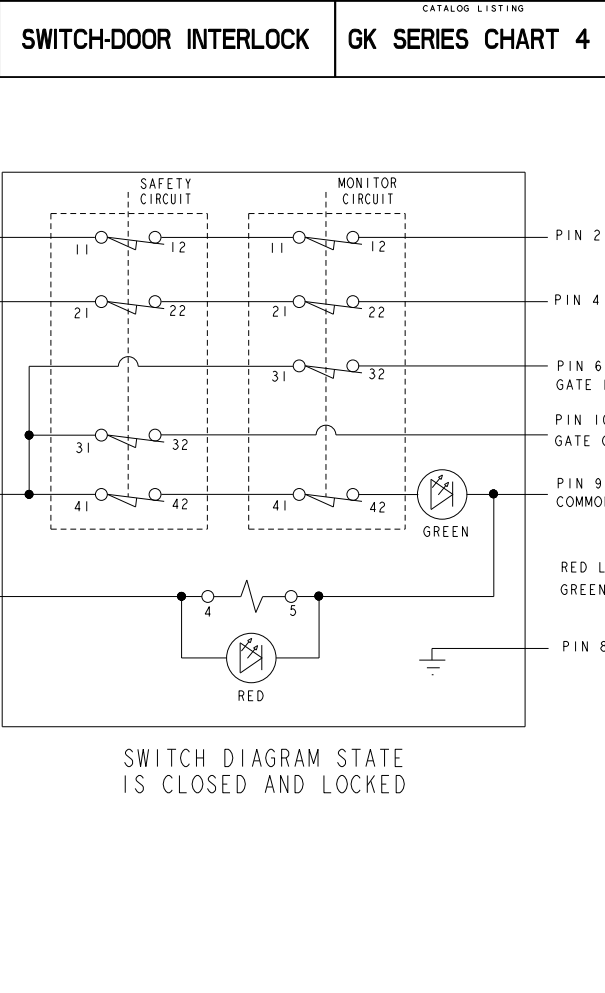
GK SERIES CHART 4

THIS DRAWING COVERS A PROPRIETARY ITEM AND IS THE PROPERTY OF MICRO SWITCH, A DIVISION OF HONEYWELL. THIS DRAWING IS NOT TO BE COPIED OR USED WITHOUT THE APPROVAL OF MICRO SWITCH

MODIFICATION CODE: F05

CATALOG LISTING	GK SERIES CHART 4	ISSUE	52	PAGE 14 OF 16
REVISIONS		DATE	BY	CHK
N 0047583				
SFK				
04FEB09				
9 DEC 99	JAF	9 DEC 99	JK	JK
9 DEC 99	JAF	9 DEC 99	JK	JK
9 DEC 99	JAF	9 DEC 99	JK	JK
9 DEC 99	JAF	9 DEC 99	JK	JK
9 DEC 99	JAF	9 DEC 99	JK	JK
9 DEC 99	JAF	9 DEC 99	JK	JK

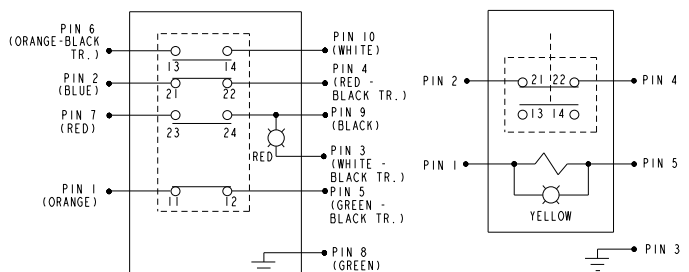
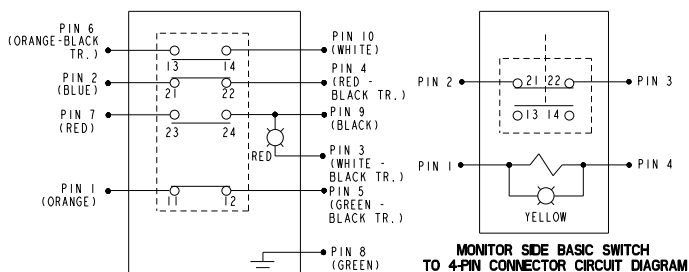
ANSI Y14.5M-1982 APPLIES



MODIFICATION CODE: -FW

DC SOLENOID VOLTAGE DEVICES ⚠

AC SOLENOID VOLTAGE DEVICES ⚠



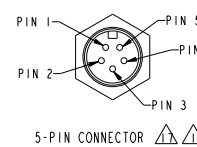
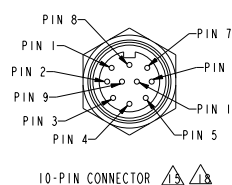
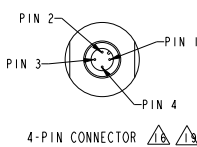
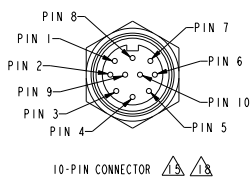
GATE SIDE BASIC SWITCH TO 10-PIN CONNECTOR CIRCUIT DIAGRAM

GATE SIDE BASIC SWITCH TO 10-PIN CONNECTOR CIRCUIT DIAGRAM

MONITOR SIDE BASIC SWITCH TO 5-PIN CONNECTOR CIRCUIT DIAGRAM

DIAGRAMS SHOWN WITH KEY INSERTED AND LOCKED

DIAGRAMS SHOWN WITH KEY INSERTED AND LOCKED



THIRD ANGLE PROJECTION	
SCALE NTS	
DO NOT SCALE PRINT	
TOLERANCES	
APPLY TO DESIGN UNITS. CONVERSIONS ARE ONLY FOR REFERENCE. UNLESS NOTED, TOLERANCES ARE 1/	
FR. PLACES	2.0
AND PLACES	0.5
3-DIGIT PLACES	0.1
ANGLES	0.1

DESIGN UNITS	MM
CUSTOMER	INCH
WEIGHT	2.3 kg / 5 LB MAX

THIS DRAWING COVERS A PROPRIETARY ITEM AND IS THE PROPERTY OF MICRO SWITCH, A DIVISION OF HONEYWELL. THIS DRAWING IS NOT TO BE COPIED OR USED WITHOUT THE APPROVAL OF MICRO SWITCH. CATALOG LISTING

MICROSWITCH
a Honeywell Division

SWITCH - DOOR INTERLOCK

GK SERIES CHART 4

FED. MFG. CODE 91829

ANSI Y14.5M-1982 APPLIES

PTC/CAD 3D
GRT

REV. 15 JANUO 1980

REVISIONS
N 10 15 JANUO 1980

DATE 15 JANUO 1980

DESIGNED BY SAV

CHECKED BY PJS

DATE 15 JANUO 1980

ISSUED BY H

DATE 15 JANUO 1980

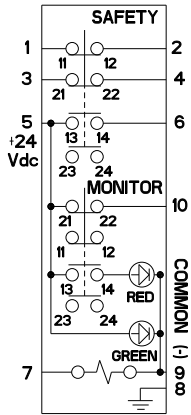
U.S. OF I.E. 16

HONEYWELL

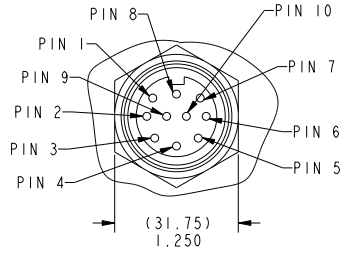
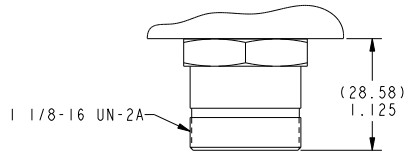
MK SERIES CHART 4

MODIFICATION CODE: F04

GK SERIES CHART 4
52
PAGE 16 OF 16
CATALOG LISTING
ISSUE
PTC/CAD
3D
DRAWN
RS
I7DEC04
CHECK
AK
RS
I7DEC04
CHECK
PRS
04FEB09
CHECK
N
0041583
SK
REFER 09
REVISIONS
RELEASE NO.
REPLACES



SWITCH DIAGRAM STATE IS CLOSED AND LOCKED



300V 7A
BRAD-HARRISON PART NO. 3R1006A21F010
OR EQUIVALENT

ANSI Y14.5M-1982 APPLIES

THIRD ANGLE PROJECTION			
SCALE		NTS	
DO NOT SCALE PRINT			
TOLERANCES			
APPLY TO DESIGN UNITS. CONVERSIONS ARE ONLY FOR REFERENCE, UNLESS NOTED. TOLERANCES ARE:			
	SUR.	TOL.	SUR.
	CAN.	MM+/-	INCHES
NO PLACES	± 0.04	± 0.1	0.01, 0.1
ONE PLACE	± 0.075	± 0.15	0.015, 0.15
TWO PLACES	± 0.01	± 0.025	0.0025, 0.025
THREE PLACES	± 0.0025	± 0.0075	0.00075, 0.0075
ANGLES			
DESIGN UNITS	<input checked="checked" type="checkbox"/> SI METRIC		<input type="checkbox"/> US CUSTOMARY
WEIGHT 2.3 kg / 5 LB MAX			