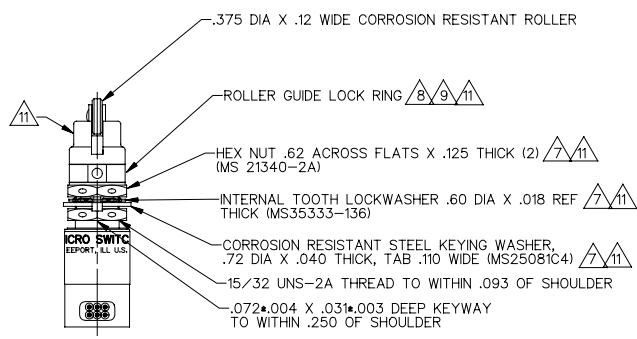
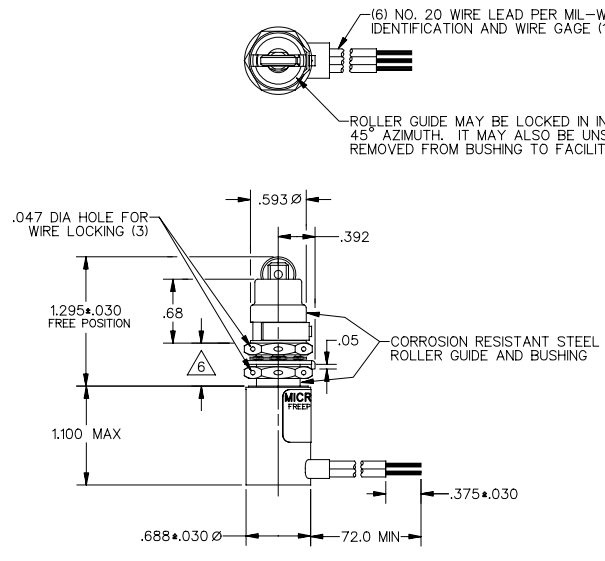
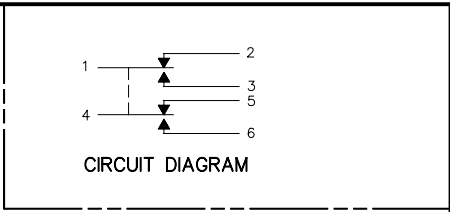


CATALOG LISTING 622HE1-6  
 ISSUE 3  
 REVISIONS  
 A PR15527 17 APR 87  
 B C080047 17 APR 87  
 C 17 JUN 86  
 DDM/CAD  
 DRAWN  
 KEW  
 CHECK GLH  
 13 APR 87  
 CHECK JPM  
 17 APR 87  
 CHECK  
 RELEASE NO. PR-15527  
 REFLECTS  
 PAGE 1 OF 1

**MICRO SWITCH**  
 a Honeywell Division  
 FED. MFG. CODE 91924

**SWITCH-ENCLOSED**

CATALOG LISTING  
**622HE1-6**



- NOTES**
- 1 - CORROSION RESISTANT STEEL ENCLOSURE
  - 2 - SWITCH SEALED PER MIL-S-8805 SYMBOL 5
  - 3 - CIRCUIT DIAGRAM AND CATALOG LISTING ARE SHOWN ON NAMEPLATE
  - 4 - COINCIDENCE OF OPERATING AND RELEASING POINTS: .010 INCH OF PLUNGER TRAVEL
  - 5 - TO ADJUST ROLLER DIRECTION REMOVE ROLLER GUIDE LOCK RING SCREW ROLLER GUIDE TO DESIRED DIRECTION, SECURE BY REPLACING ROLLER GUIDE LOCK RING
  - 6 - ROLLER GUIDE LOCATION CAN VARY BETWEEN .362 AND .520 WHILE MAINTAINING .125 MIN OVERTRAVEL
  - 7 - REPLACEMENT MOUNTING HARDWARE - PACKET 19PA9
  - 8 - REPLACEMENT ROLLER GUIDE AND LOCK RING - PACKET 15PA105
  - 9 - REPLACEMENT LOCK RING - PACKET 15PA107
  - 10 - FOR OPERATION IN TEMPERATURE RANGE OF MINUS 65°F TO PLUS 257°F
  - 11 - HARDWARE MAY BE PACKAGED UNASSEMBLED PER MIL-S-8805

THIS DRAWING COVERS A PROPRIETARY ITEM AND IS THE PROPERTY OF MICRO SWITCH, A DIVISION OF HONEYWELL. THIS DRAWING IS NOT TO BE COPIED OR USED WITHOUT THE APPROVAL OF MICRO SWITCH

| CHARACTERISTICS       |           | ELECTRICAL DATA                           |                        |
|-----------------------|-----------|---|------------------------|
| OPERATING FORCE       | 5 - 12 LB | CONTACT ARRANGEMENT<br>S P D T (2)        |                        |
| FULL OVERTRAVEL FORCE | 30 LB MAX | DO NOT SCALE PRINT                        |                        |
| RELEASE FORCE         | 3 LB MIN  | UNLESS OTHERWISE SPECIFIED TOLERANCES ARE |                        |
| PRETRAVEL             | .040 MAX  | LOAD                                      | 28 VDC                 |
| DIFFERENTIAL TRAVEL   | .020 MAX  | RES                                       | SEA LEVEL & 50,000 FT. |
| OVERTRAVEL            | .125 MIN  | IND                                       | 7                      |
|                       |           | MOTOR                                     | 4                      |

THIRD ANGLE PROJECTION

SCALE FULL

WEIGHT

ANSI Y14.5M-1982 APPLIES