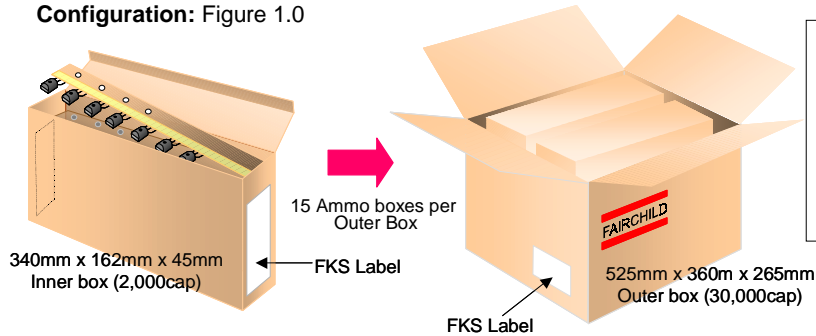


## TO-92L Ammo Tape Data

**FAIRCHILD**  
SEMICONDUCTOR®

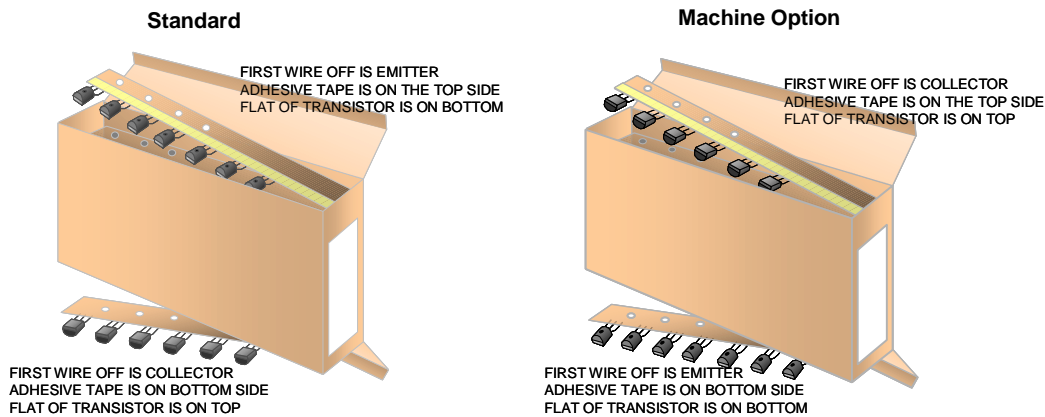
### TO-92L Packaging Configuration: Figure 1.0



#### Packaging Description:

TO-92L parts are shipped normally in ammo tape. These ammo parts in standard option are shipped with 2,000 units per ammo box. This and some other options are further described in the Packaging Information table. These full ammo boxes are individually barcode labeled and placed inside a standard intermediate box (illustrated in figure 1.0) made of recyclable corrugated brown paper. And these boxes are placed inside a barcode labeled shipping box which comes in different sizes depending on the number of parts shipped.

### TO-92L Radial Ammo Packaging Configuration: Figure 2.0



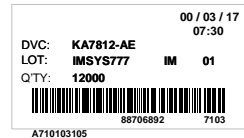
### TO-92L Packaging Configuration: Figure 3.0

TO-92 Packaging Information		
Packaging Option	Standard (no flow code)	Standard (no flow code)
Packaging type	AMMO	BULK
Qty per Reel/Tube/ Bag		500
Inner Box Dimension (mm)	340x162x45	237x167x96
Max qty per Box	2,000	6,000
Outer Box Dimension (mm)	525x360x265	525x360x265
Max qty per Box	30,000	60,000
Weight per unit (gm)	0.3974	0.3974
Note/Comments		

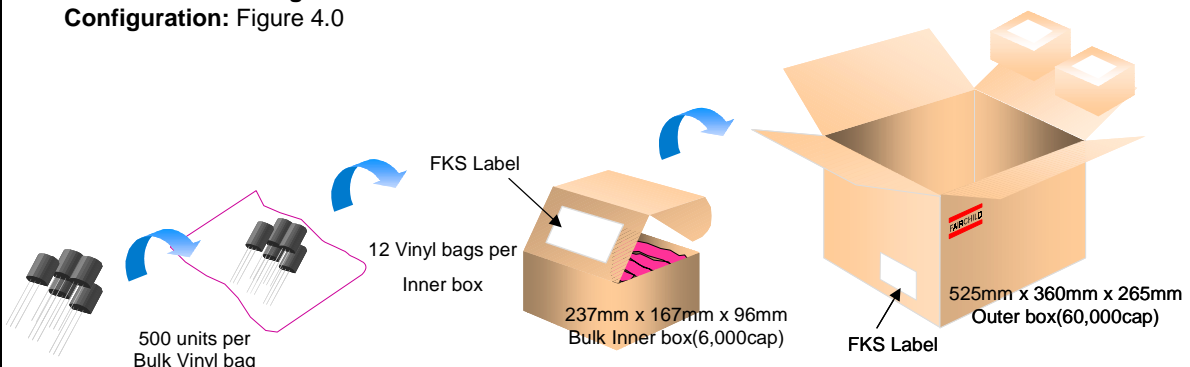
#### Inner Box Bar Code Label Sample



#### Outer Box Bar Code Label Sample

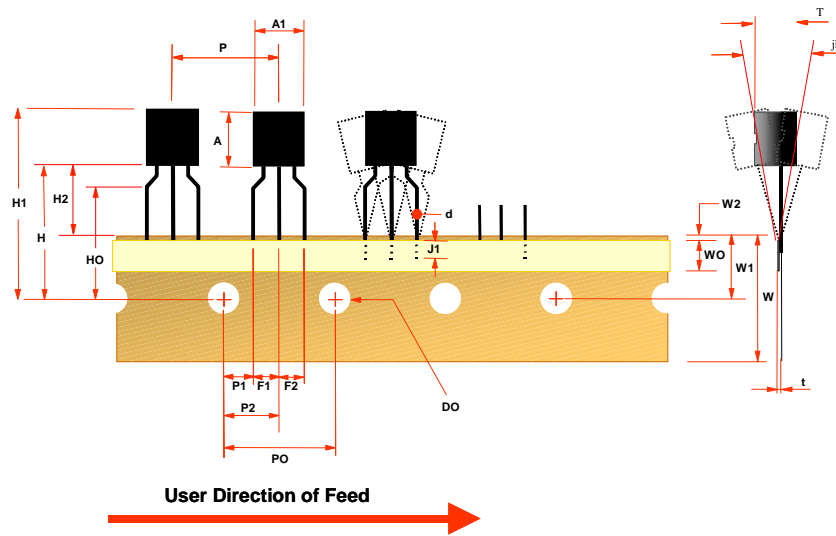


### TO-92L Bulk Packing Configuration: Figure 4.0



# TO-92L Tape and Reel Data, continued

## TO-92L Tape and Reel Taping Dimension Configuration: Figure 7.0



### TO-92L BJT

ITEM DESCRIPTION	SYMBOL	DIMENSION	REMARK
Body Width	A1	4.90 (+ 0.20)	
Body Height	A	8.00 (+/- 0.20)	
Body Thickness	T	3.90 (+/- 0.20)	
Lead-Wire Diameter	d	0.50 (+/- 0.05)	
Pitch of Component	P	12.7 (+/- 1.00)	
Feed Hole Pitch	P0	12.7 (+/- 0.20)	
Hole Center to Component Center	P2	6.35 (+/- 0.50)	In Case of Reel Package +/- 1.00
Lead to Lead Distance	F1,F2	2.50 (+ 0.3, - 0.10)	F1-F2= +/- 0.30
Component Alignment F-R	jh	0.00 (+/- 1.00)	
Tape Width	W	18.00 (+ 1.00, - 0.50)	
Hole-Down Tape Width	W0	6.00 (+/- 0.50)	
Hole Position	W1	9.00 (+/- 0.50)	
Hole-Down Tape Position	W2	1.00 (max)	
Height of Component From Tape Center	H	19.50 (+/- 1.00)	H + A <= H1
Lead-Wire Clinch Height	H0	16.00 (+/- 0.50)	
Component Height	H1	32.35 (max)	
Lead-Wire (Tape Portion)	J1	2.50 (min)	
Feed Hole Diameter	D0	4.00 (+/- 0.20)	
Total Tape Thickness	t	0.70 (+/- 0.20)	
Position of Hole	P1	3.85 (+/- 0.50)	

Note : All dimensions are in millimeters.

### TO-92L MOSFET

ITEM DESCRIPTION	SYMBOL	DIMENSION	REMARK
Body Width	A1	4.90 (+ 0.20)	
Body Height	A	8.00 (+/- 0.20)	
Body Thickness	T	3.90 (+/- 0.20)	
Lead-Wire Diameter	d	0.50 (+/- 0.05)	
Pitch of Component	P	12.7 (+/- 1.00)	
Feed Hole Pitch	P0	12.7 (+/- 0.20)	
Hole Center to Component Center	P2	6.35 (+/- 0.50)	In Case of Reel Package +/- 1.00
Lead to Lead Distance	F1,F2	2.50 (+ 0.3, - 0.10)	F1-F2= +/- 0.30
Component Alignment F-R	jh	0.00 (+/- 1.00)	
Tape Width	W	18.00 (+ 1.00, - 0.50)	
Hole-Down Tape Width	W0	6.00 (+/- 0.50)	
Hole Position	W1	9.00 (+ 1.00, - 0.50)	
Hole-Down Tape Position	W2	1.00 (max)	
Height of Component From Tape Center	H	19.00 (min)	H + A <= H1
Lead-Wire Clinch Height	H0	16.00 (+1.00, - 0.50)	
Component Height	H1	32.30 (max)	
Lead-Wire (Tape Portion)	J1	2.50 (min)	
Feed Hole Diameter	D0	4.00 (+/- 0.20)	
Total Tape Thickness	t	0.70 (+/- 0.20)	
Position of Hole	P1	3.85 (+/- 0.50)	
Pkg to Tape	H2	9.50 (min)	

Note : All dimensions are in millimeters.