

## Re-Configurable 5 Output CMOS TCXO

- Fixed & Re-Configurable Multi-Frequency Oscillator
- Intuitive software and PC interface
- Easily update system
- Software flexible, quick upgrades and changes
- Industry-standard packaging saves on board space
- Mult. outputs 1 pkg vs. mult. osc & assoc. comp.
- Performs well under all conditions

## Applications

- High-end multimedia
- Communications
- Industrial
- A/D converters
- Consumer Applications
- New and innovative products
- Temperature-sensitive applications

Series

**CCT5RC**

Part Numbering Example: CCT5RC 1A 200.0 / 150.0 / 125.0 / 100.0 / 75.0

<b>CCT5RC</b>	<b>1A</b>	<b>200</b>	<b>150</b>	<b>125</b>	<b>100</b>	<b>75</b>
<b>SERIES</b>	<b>PACKAGE STYLE</b>	<b>FREQUENCY A</b>	<b>FREQUENCY B</b>	<b>FREQUENCY C</b>	<b>FREQUENCY D</b>	<b>FREQUENCY E</b>
	1A=14 pin dip 9=9.6x11.4 SMD	0.2 - 200 MHz	0.2 - 200 MHz	0.2 - 200 MHz	0.2 - 200 MHz	25 - 200 MHz

Specifications:	Min	Typ	Max	Unit
<b>Frequency Range:</b>				
Output A CMOS	0.2		200	MHz
Output B CMOS	0.2		200	MHz
Output C CMOS	0.2		200	MHz
Output D CMOS	0.2		200	MHz
Output E CMOS	25		200	MHz
<b>Available Stability Options:</b>	-2.5		2.5	ppm
<b>Supply Voltage:</b>	3.135	3.3	3.465	V
<b>Operating Temperature Range Options:</b>	-40		85	°C
<b>Storage Temperature:</b>	-55		125	°C
<b>Duty Cycle:</b>	40 45		60 55	% %
<b>Start-Up Time:</b>		3	10	mS
<b>Aging (PPM/1st Year):</b> Ta=25C, Vdd=3.3V			±1	
<b>Static Discharge Voltage</b> Mil-Std 883, method 3015	2000			V
<b>Output Load:</b> CMOS, < 40 MHz CMOS, ≥ 40 MHz			30 15	pF pF
<b>Output Level:</b>	CMOS			
<b>Packaging:</b>	25 / Tube Tape & Reel			14 pin SMD

Notes: Recommended .01 µF bypass capacitor from Vcc to GND. Capacitor should be as close to oscillator as possible.

Cardinal Components, Inc.  
155 Route 46 West  
Wayne, NJ 07470



M-54

TEL: (973)785-1333  
E-MAIL: sales@cardinalxtal.com  
WEB: http://www.cardinalxtal.com

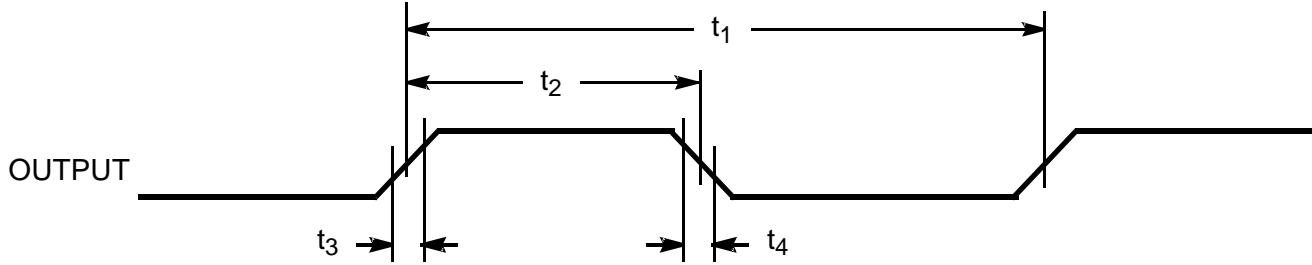
**Electrical Characteristics**

DESCRIPTION		CONDITIONS	MIN	TYP	MAX	UNIT
Ioh	Output High Current	Voh = (L)Vdd - 0.5, (L)Vdd = 3.3 V	12	24		mA
Iol	Output Low Current	Vol = .5, (L)Vdd = 3.3 V	12	24		mA
Vih	High Level Input Voltage	CMOS levels, % of Vdd	0.7			V
Vil	Low-Level Input Voltage	CMOS levels, % of Vdd			0.3	V
Iih	Input High Current	Vin = AVdd - 0.3 V		<1	10	μA
Iil	Input Low Current	Vin = + 0.3 V		<1	10	μA
Ioz	Output Leakage Current	tri-state outputs			10	μA
Idd	Total Power Supply Current	Example 1: 1 output@200 MHz; 1 output@66.666 MHz 1 output@100 MHz; 1 output@50 MHz 1 output@25 MHz Example 2: 1 output@200 Mhz; 1 output@155.52 MHz 1 output@100 Mhz; 1 output@77.76 MHz 1 output@50 Mhz		35		mA
				39		mA
Idds	Shutdown Power Supply Curr	Shutdown active		5	20	μA

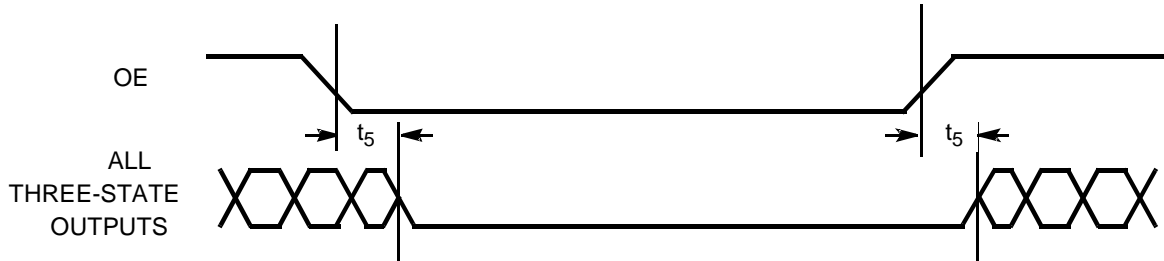
**Output Clock Switching Characteristics**

DESCRIPTION		CONDITIONS	MIN	TYP	MAX	UNIT
1/t1	Output Frequency	Clock output limit, CMOS, Commercial			200	MHz
t3	Rising Edge Slew Rate	Output clock rise time, 20% – 80% Vdd	0.75	1.4		nS
t4	Falling Edge Slew Rate	Output clock fall time, 20% – 80% Vdd	0.75	1.4		nS
t5	Output tri-state timing after SD/OE switches	Time for output to enter/leave tri-state mode		150	300	nS
t6	Clock Jitter measured at Vdd/2	Peak-to-Peak period jitter, CLK outputs		200		pS
	Frequency Switch Time	Change time		2	4	ms

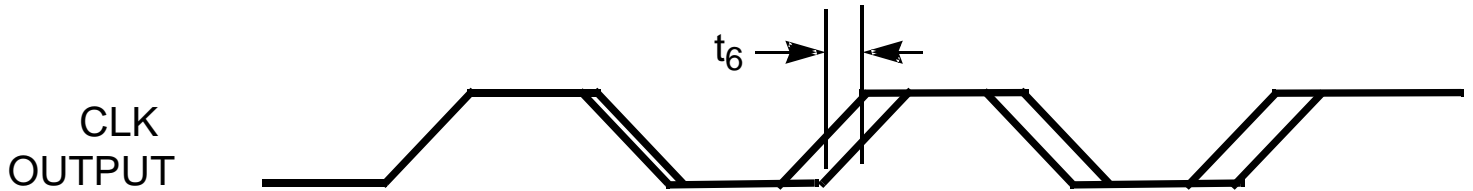
ALL OUTPUTS, DUTY CYCLE, RISE/FALL TIME



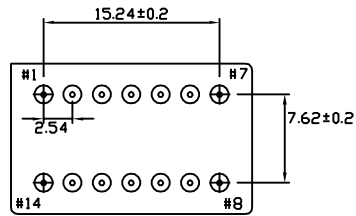
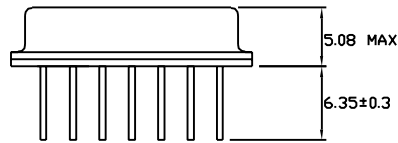
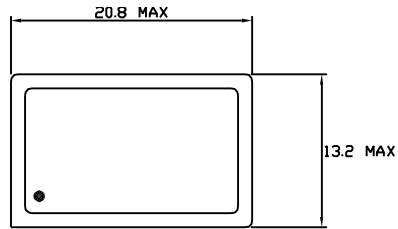
OUTPUT TRI-STATE TIMING



CLK OUTPUT JITTER



DIP

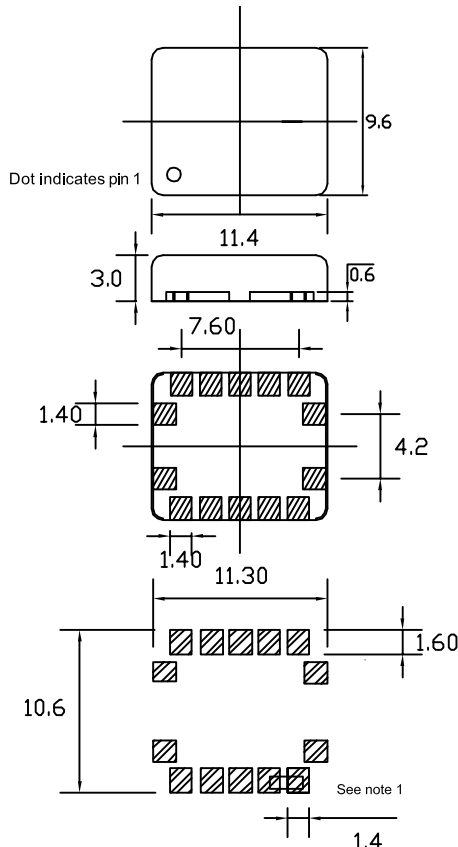


Dimensions are in mm

**PIN FUNCTION**

- PIN 1 OE (CONNECT TO VDD)
- PIN 2 SUSPEND (CONNECT TO GND)
- PIN 3 VDD
- PIN 4 CLK C OUTPUT
- PIN 5 CONNECT TO PIN 6
- PIN 6 CONNECT TO PIN 5
- PIN 7 GND
- PIN 8 FACTORY USE (MAKE NO CONNECTION)
- PIN 9 CLK D OUTPUT
- PIN 10 CLK E OUTPUT
- PIN 11 SDAT
- PIN 12 SCLK
- PIN 13 CLK A OUTPUT
- PIN 14 CLK B OUTPUT

SMD



**PIN FUNCTION**

- PIN 1 FACTORY USE (MAKE NO CONNECTION)
- PIN 2 OE
- PIN 3 VDD
- PIN 4 CLK C OUTPUT
- PIN 5 CONNECT TO PIN 6
- PIN 6 CONNECT TO PIN 5
- PIN 7 GND
- PIN 8 FACTORY USE (MAKE NO CONNECTION)
- PIN 9 CLK D OUTPUT
- PIN 10 CLK E OUTPUT
- PIN 11 SCLK
- PIN 12 SDAT
- PIN 13 CLK A OUTPUT
- PIN 14 CLK B OUTPUT

Dimensions in mm  
Recommended solder pad layout

Note 1:  
For proper operation pin 5 must be connected to pin 6



**Flash Programmability:**

Non-Volatile programming enables easy customization, ultrafast turnaround, performance tweaking, design timing margin testing, inventory control, lower part count, and more secure product supply. In addition, any part in the family can also be programmed multiple times, which reduces programming errors and provides an easy upgrade path for existing designs.

**Feature of the I<sup>2</sup>C-bus:**

- Only two bus lines are required; a serial data line (SDA) and a serial clock line (SCL)
- Each device connected to the bus is software addressable by a unique address and simple master/slave relationship exist at all times; master can operate as a master-transmitter or as master-receivers
- It's a true multi-master bus including collision detection and arbitration to prevent data corruption if two or more master simultaneously initiate data transfer
- Serial 8-bit oriented, bidirectional data transfers can be made at up to 100 Kbit/s in the standard mode, up to 400 kbit/s in the fast-mode, or up to 3.4 Mbit/s in the High-speed mode

**Designer Benefits:**

I<sup>2</sup>C bus compatible In Circuit Reconfigurable Oscillator "ICRO" allow a system design to rapidly progress directly from a functional block diagram to a prototype. Moreover, since they 'clip' directly onto the I<sup>2</sup>C bus without any additional external interfacing, they allow a prototype system to be modified or upgraded simply by 'clipping' or 'unclipping' ICRO to or from the bus.

Here are some of the feature of I<sup>2</sup>C- bus compatible ICRO which are particularly attractive to designer

- Functional blocks on the block diagram correspond with the actual ICRO designs proceed rapidly from block diagram to final schematic
- No need to design bus interfaces because the I<sup>2</sup>C-bus interface is already integrated on the ICRO
- Integrated addressing and data-transfer protocol allow systems to be completely software-defined
- The same ICRO types can often be used in many different applications
- Design-time reduces as designers quickly become familiar with the frequently used functional book represented by I<sup>2</sup>C-bus compatible and ICRO
- ICRO can be added to or remove from system without affecting any other circuits on the bus

In addition to these advantages, the CMOS ICRO in the I<sup>2</sup>C-bus compatible range offer designers special feature which are particularly attractive for portable equipment and battery-backed systems.

**They All Have:**

- Extremely low current consumption
- High Noise immunity
- Wide operating temperature range

**Manufacturer Benefits**

I<sup>2</sup>C-bus compatible ICRO don't only assist designer, they also give a wider range of benefits to the equipment manufacturer because:

- The simple 2-wire serial I<sup>2</sup>C bus minimizes interconnections so ICRO have fewer pins and there are not so many PCB tracks; result- smaller and less expensive PCBs
- The completely integrated I<sup>2</sup>C-bus protocol eliminates the need for address decoders and other 'glue logic'
- The multi-master capability of the I<sup>2</sup>C-bus allows rapid testing and alignment of end-user equipment via external connections to an assembly line
- I<sup>2</sup>C-bus handbook, I<sup>2</sup>C Website: [www.semiconductors.philips.com/I2C](http://www.semiconductors.philips.com/I2C)

