



Fast Recovery Diodes

RF1501TF3S

[Product description]

ROHM's fast recovery diodes are ultra high-speed, low VF, and suited for significant efficiency increase of switching power supply as well as reduction of switching loss.

Features

EHigh-reliability TO-220 package product.

Product specifications

Absolute maximum ratings (Ta=25°C)

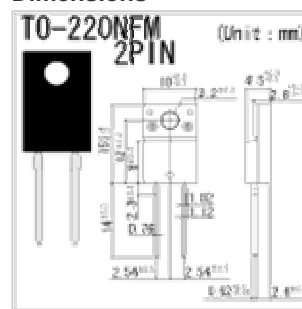
Rated parameters	Standard value	Conditions
Repetitive peak reverse voltage $V_{RM}(V)$	350	
Reverse voltage(DC) $V_R(V)$	300	
Forward current I_F	-	
Average rectified forward current $I_O(A)$	20	
Forward current surge peak $I_{FSM}(A)$	100	60Hz/1cyc
Junction temperature $T_j(^{\circ}C)$	150	
Storage temperature $T_{stg}(^{\circ}C)$	-55 to +150	

Outline

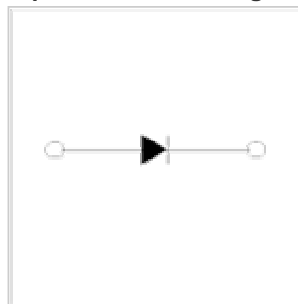


15x10(t=4.5)

Dimensions



Equivalent circuit diagram



*The contents described here are just outline for introduction.

Please obtain the specification sheets from us for thorough check before use.

Copyright © 1997-2010 ROHM CO.,LTD.