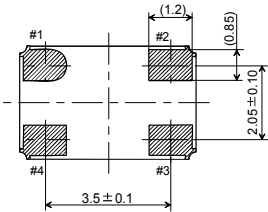
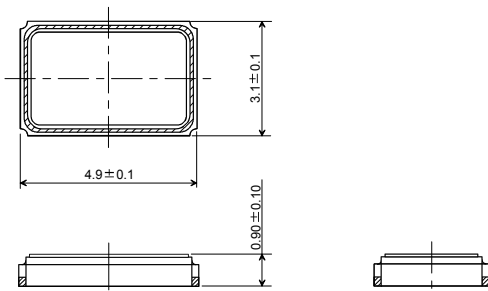
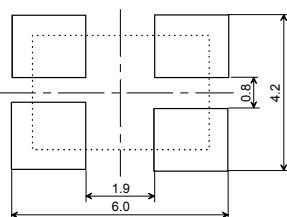


1	NDK Part Number	See table 1
2	NDK Specification Number	STD-CSY-1
3	Type	NX5032SD
4	Electrical Characteristics	
4.1	Nominal Frequency (f_{nom})	See table 1
4.2	Overtone order	Fundamental
4.3	Frequency Tolerance	$\pm 15 \times 10^{-6}$ max. (+25 °C)
4.4	Frequency Versus Temperature Characteristics	$\pm 50 \times 10^{-6}$ max. (-40 ~ +125 °C)
4.5	Equivalent Series Resistance (R_r)	The reference temperature shall be +25 °C
4.6	Shunt Capacitance (C_0)	See table 1
4.7	Maximum Drive Level	NA
5	Measurement Circuit	100 μ W max.
5.1	Frequency Measurement	
5.1.1	Measuring Instrument	π -network
5.1.2	Load Capacitance (C_L)	12 pF
5.1.3	Level of Drive	10 μ W
5.2	Equivalent Resistance Measurement	
5.2.1	Measuring Instrument	π -network
5.2.2	Load Capacitance (C_L)	Series
5.2.3	Level of Drive	10 μ W
6	Operable Temperature Range	-40 ~ +125 °C
7	Storage Temperature Range	-40 ~ +125 °C
8	Dimension	

(Unit: mm)



Reference Land Pattern (Typical)



Top View Terminal land connections

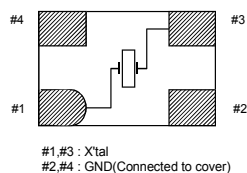


Table1

f_{nom} (MHz)	R_r (Ω) max.	NDK Part Number
9.750	150	NX5032SD-9.750M-STD-CSY-1
9.84375	150	NX5032SD-9.84375M-STD-CSY-1
10.000	120	NX5032SD-10.000M-STD-CSY-1
10.010	120	NX5032SD-10.010M-STD-CSY-1
12.000	120	NX5032SD-12.000M-STD-CSY-1
13.000	120	NX5032SD-13.000M-STD-CSY-1
13.08148	120	NX5032SD-13.08148M-STD-CSY-1
13.125	120	NX5032SD-13.125M-STD-CSY-1
13.225625	120	NX5032SD-13.225625M-STD-CSY-1
13.400	120	NX5032SD-13.400M-STD-CSY-1
13.560	120	NX5032SD-13.560M-STD-CSY-1
14.000	120	NX5032SD-14.000M-STD-CSY-1
14.264063	120	NX5032SD-14.264063M-STD-CSY-1
15.2671875	100	NX5032SD-15.2671875M-STD-CSY-1
16.000	100	NX5032SD-16.000M-STD-CSY-1
16.0132	100	NX5032SD-16.0132M-STD-CSY-1
18.080	100	NX5032SD-18.080M-STD-CSY-1
18.089583	100	NX5032SD-18.089583M-STD-CSY-1
18.370366	100	NX5032SD-18.370366M-STD-CSY-1
19.0625	100	NX5032SD-19.0625M-STD-CSY-1
19.6875	100	NX5032SD-19.6875M-STD-CSY-1
20.000	80	NX5032SD-20.000M-STD-CSY-1
21.948717	80	NX5032SD-21.948717M-STD-CSY-1
22.0586	80	NX5032SD-22.0586M-STD-CSY-1