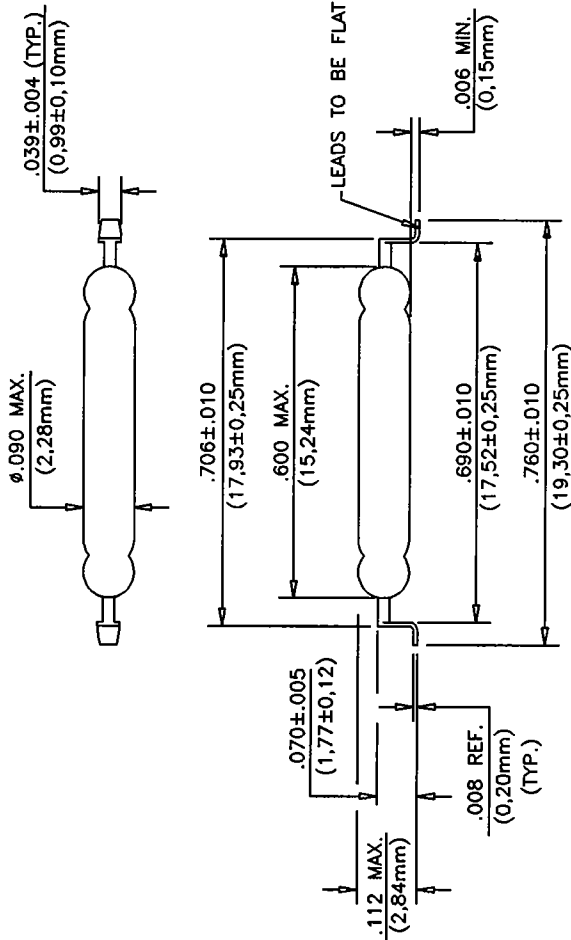
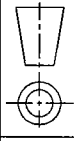


ELECTRICAL RATINGS		
CONTACT FORM	A	
CONTACT RATING	10	
RATING SENSITIVITY	WATTS	20
VOLTAGE	SWITCHING	200
	BREAKDOWN	250
	ARC-QUENCH	200
CURRENT	AMPERES-MAX.	0.5
	AMPERES-MAX.	1.2
RESISTANCE	OHMS-MAX.	0.10
	OHMS-MIN.	10 ¹⁰
CAPACITANCE	PICOFARADS-TYP. 0.2	

OPERATING CHARACTERISTICS	
OPERATE TIME	ms-MAX. 0.5
RELEASE TIME	ms-MAX. 0.2
SHOCK	G'S MAX., 11ms 1/2 SINE WAVE
	100
VIBRATION	G'S MAX., 50-2000 HERTZ
	30
RESONANT FREQUENCY	HERTZ, TYP. 3900
TEMPERATURE STORAGE	OPERATING DEGREES, CELSIUS
	-40 TO +125
	DEGREES, CELSIUS
	-65 TO +125

SEE REED SWITCH CATALOG FOR DEFINITION OF TERMS



MAGNETIC CHARACTERISTICS	
TEST COIL	L4989
STANDARD TOLERANCE	AMPERE TURNS
PULL-IN RANGES BEFORE MOD.	12-23
	17-28
	22-33
	27-38

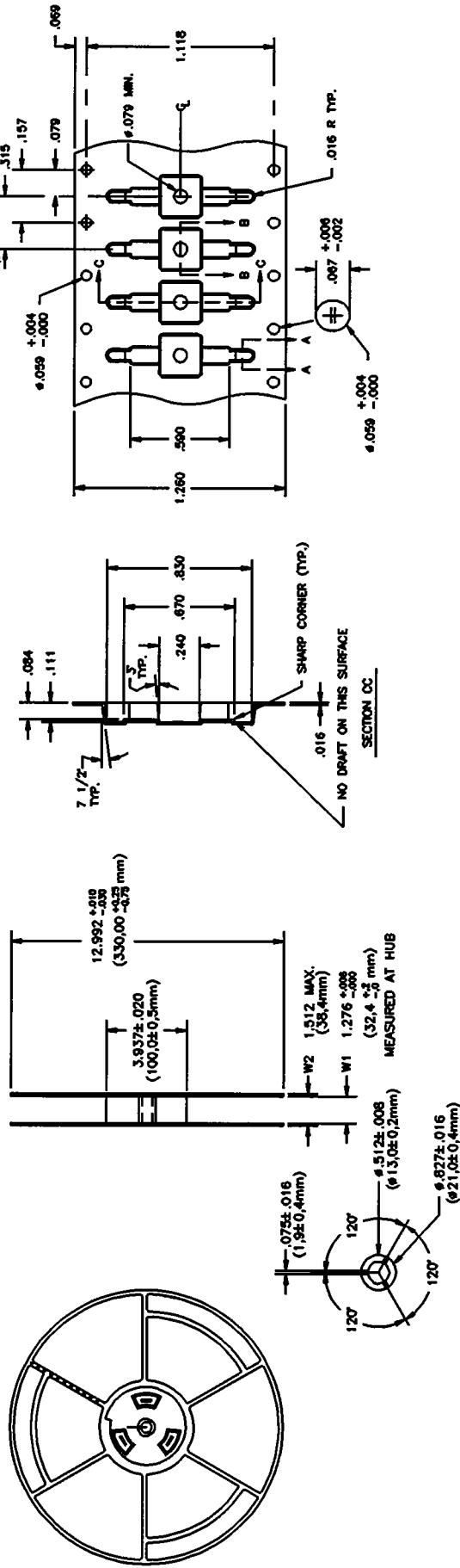
PACKAGING TAPE AND REEL - 3000/REEL
SEE PAGE 2 OF 2 FOR TAPE AND REEL
DETAIL.

TIN PLATED LEADS

© HAMLIN, Incorporated
1996

This design and print is copyright and is the property of HAMLIN, Inc. It must not be copied or permitted to be copied, nor may its contents be divulged to any third party without the prior written permission from the company.

MDSM-4R			
AD	ADD DIM TO OUTSIDE LEG FORM	DCR No.	DCR No. A5406
	A9340	GJ	Dwn. RLB DATE 12/17/96
REV.	DESCRIPTION OF REVISION	BY	DATE
		GJ	11/7/01
		GJ	11/5/01
		APP.	DATE
		GJ	11/7/01
		App'd GJ	DATE 12/18/96
			Page 1 of 2



MATERIAL: ANTISTATIC PS

MDSM-4R

HAMLIN, Inc.

DCR No. A5406

AD	ADD DIM TO OUTSIDE LEG FORM	A9340	GJ	11/5/01	GJ	11/7/01	Dwn.	RLB	DATE	12/17/96
REV.	DESCRIPTION OF REVISION	DCR No.	BY	DATE	APP.	DATE	App'd	GJ	DATE	12/18/96