

# LSISAS1068E PCI Express to 8-Port Serial Attached SCSI Controller

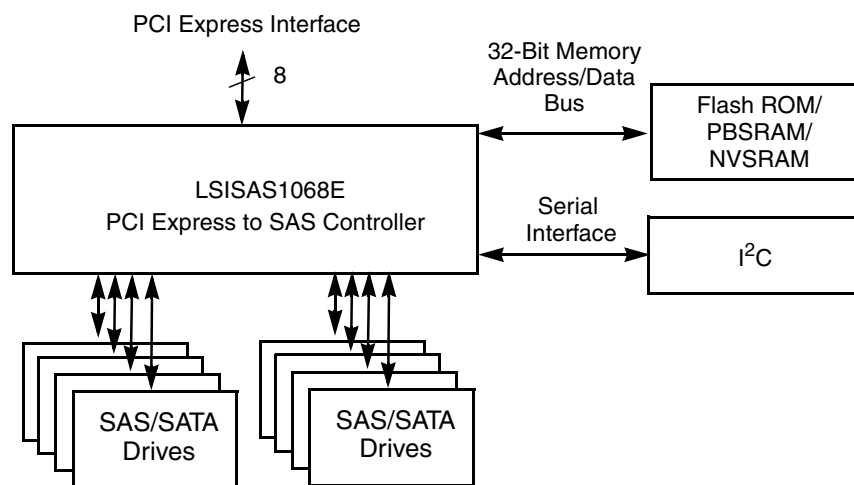


Datasheet  
Version 2.1

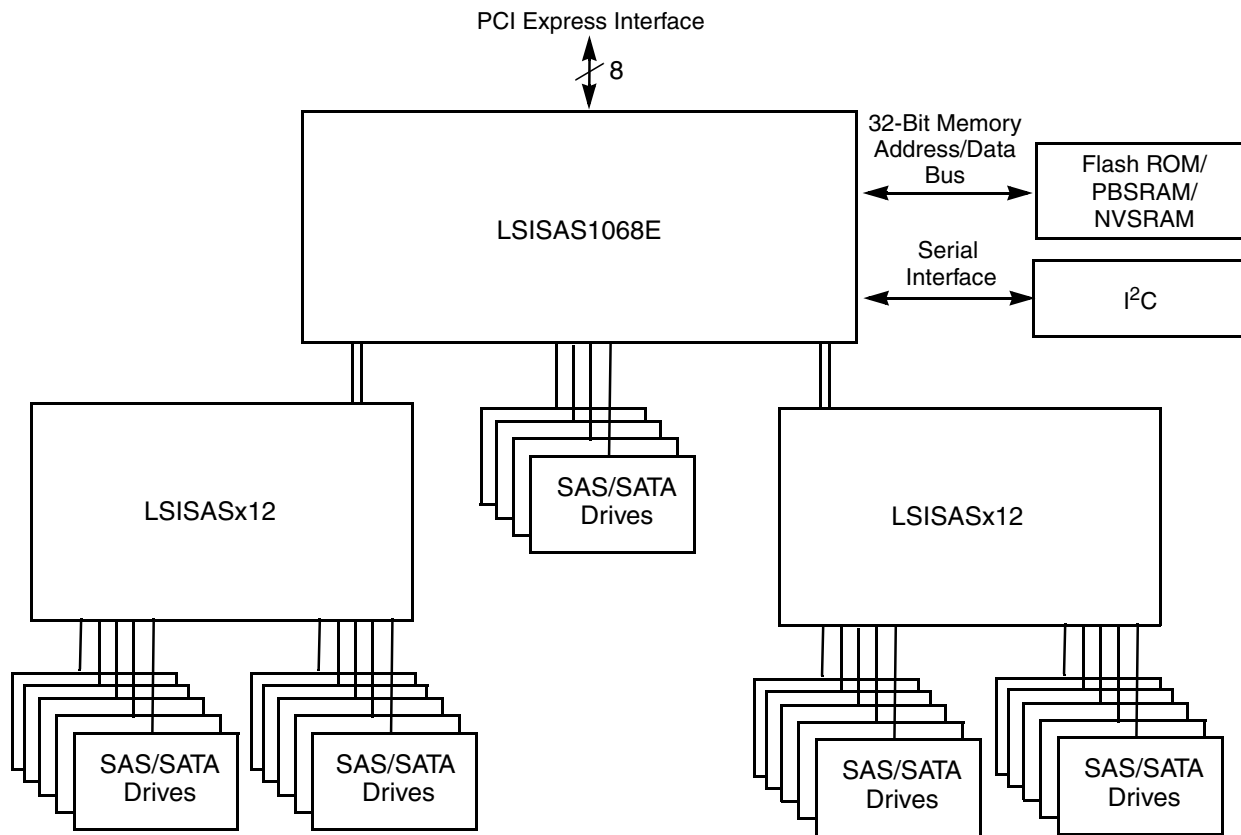
The LSISAS1068E is an eight-port, 3.0 Gbit/s SAS/SATA controller that is compliant with the Fusion-MPT™ (Message Passing Technology) architecture, provides an eight-lane PCI Express interface, and supports Integrated RAID™ technology. The PCI Express software is backward compatible with previous revisions of the PCI bus and PCI-X bus. The LSISAS1068E supports the *PCI Express Base Specification, Revision 1.0a*, the SAS protocol as described in the *Serial Attached SCSI Standard, version 1.1*, and the *Serial ATA Specification, revision 2.5*. [Figure 1](#) and [Figure 2](#) provide examples of LSISAS1068E applications.

The point-to-point interconnect feature of the PCI Express bus limits the electrical load on links, allowing increased transmission and reception frequencies. The PCI Express transmission and reception data rates for each full-duplex interconnect is 2.5 Gbits/s. The LSISAS1068E has eight PCI Express phys, which provide host-side possible maximum transmission and reception rates of 4.0 Gbytes/s. The LSISAS1068E supports x8, x4, and x1 PCI Express link widths, and automatically downshifts if plugged into either a x4 connector or into a x8 connector that is wired as a x4 connector. The serial PCI Express interconnect between devices lowers the number of pins per device, which reduces both the PCI Express board design costs and the overall board design complexity. The serial connection also makes the PCI Express performance highly scalable.

**Figure 1 LSISAS1068E Direct-Connect Example**



**Figure 2 LSISAS1068E Controller and LSISASx12 Expander Example**



PCI Express implements a switch-based technology to interconnect a large number of devices. Communication over the serial interconnect is accomplished using packet-based communication protocol. Quality of Service (QoS) features provide differentiated transmission performance for different applications. Hot Plug/Hot Swap support enables “always-on” systems. Enhanced error handling features, such as end-to-end CRC (ECRC) and Advanced Error Reporting, make PCI Express suitable for robust, high-end server applications. Hot Plug, power management, error handling, and interrupt signaling are accomplished using packet-based messaging rather than sideband signals. This keeps the device pin count low and reduces the system cost.

Each of the eight SAS phys on the LSISAS1068E is capable of SAS/SATA link rates of 3.0 Gbits/s and 1.5 Gbits/s. The user can configure ports as wide or narrow. Narrow ports have one phy per port. Wide ports have two, three, or four phys per port. Each port supports the SSP, SMP, STP, and SATA protocols.

The SAS interface uses the proven SCSI command set to ensure reliable data transfers, while providing the connectivity and flexibility of point-to-point serial data transfers. The SAS interface provides improved performance, simplified cabling, smaller connectors, lower pin count, and lower power requirements when compared to parallel SCSI. SAS controllers leverage an electrical and physical connection interface that is compatible with SATA technology.

The LSI SAS1068E supports the Integrated RAID solution, which is a highly integrated, low-cost RAID implementation. It is designed for systems requiring redundancy and high availability, but not needing a full-featured RAID implementation. Integrated RAID technology supports up to two volumes and ten drives. Each volume can contain up to eight drives. The Integrated RAID solution includes Integrated Mirroring™ (IM) technology, Integrated Mirroring Enhanced (IME), and Integrated Striping™ (IS) technology. IM technology provides physical mirroring of two physical drives, plus a hot spare drive. IME supports three to eight drives plus a hot spare drive. IM technology and IME require an NVSRAM to support write journaling. IS technology enables data striping across up to eight physical drives. The Integrated RAID solution is OS independent, easy to install and configure, supports up to eight drives at RAID Level 0, and does not require a special driver. The runtime operation of the Integrated RAID solution is transparent to the operating system. A single firmware build supports all Integrated RAID capabilities.

The LSI SAS1068E uses the Fusion-MPT architecture, which features a performance based message passing protocol that offloads the host CPU by completely managing all I/Os and minimizes system bus overhead by coalescing interrupts. The proven Fusion-MPT architecture requires only thin, easy-to-develop device drivers that are independent of the I/O bus. LSI Logic provides these device drivers.

To meet its flexibility and data transfer requirements, the LSI SAS1068E uses an ARM966 processor that operates at 225 MHz. LSI manufactures the LSI SAS1068E using Gflx™ technology.

---

## Features

This section lists the features of the LSISAS1068E.

### SSP and SAS Features

This section describes the SSP and SAS features.

- Each phy supports 3.0 Gbit/s and 1.5 Gbit/s SAS data transfers
- Provides a serial, point-to-point, enterprise-level storage interface
- Supports wide transfers consisting of two, three, or four phys from a single Quad Port
- Supports narrow ports consisting of a single phy
- Transfers data using SCSI information units
- Is compatible with SATA target devices

### SATA and STP Features

This section describes the SATA and STP features.

- Each phy supports 3.0 Gbit/s and 1.5 Gbit/s SATA data transfers
- Each phy supports 3.0 Gbit/s and 1.5 Gbit/s STP data transfers
- Allows addressing of multiple SATA targets through an expander
- Allows multiple initiators to address a single target (in a fail-over configuration) through an expander

### PCI Express Features

The LSISAS1068E supports these PCI Express features.

- Provides eight PCI Express phys
- Supports a single-phy (1 lane) link transfer rate up to 2.5 Gbits/s in each direction
- Supports x8, x4, and x1 link widths
- Automatically downshifts to a x4 link width if plugged into a x4 connector or into a x8 connector that is wired as a x4 connector

- Provides a scalable interface
  - Single-lane aggregate bandwidth of up to 0.5 Gbytes/s (500 Mbytes/s)
  - Quad-lane aggregate bandwidth of up to 2.0 Gbytes/s (2000 Mbytes/s)
  - 8-lane aggregate bandwidth of up to 4.0 Gbytes/s (4000 Mbytes/s)
- Offers a maximum payload of 2 Kbytes
- Supports serial, point-to-point interconnections between devices
  - Reduces the electrical load of the connection
  - Enables higher transmission and reception frequencies
- Supports lane reversal and polarity inversion
- Supports PCI Express Hot Plug
- Supports Power Management
  - Supports the PCI Power Management 1.2 specification
  - Supports Active State Power Management, including the L0, L0s, and L1 states, by placing links in a power-savings mode during times of no link activity
- Uses a packetized and layered architecture
- Achieves a high bandwidth per pin with low overhead and low latency
- PCI Express is software compatible with PCI and PCI-X software
  - Leverages existing PCI device drivers
  - Supports the Memory, I/O, and Configuration address spaces
  - Supports memory read/write transactions, I/O read/write transactions, and configuration read/write transactions
- Provides 4 Kbytes of PCI Configuration address space per device
- Supports posted and nonposted transactions
- Provides quality of service (QOS) link configuration and arbitration policies
- Supports Traffic Class 0 and one virtual channel
- Supports Message Signaled Interrupts (both MSI and MSI-X) as well as INTx interrupt signaling for legacy PCI support
- Supports end-to-end CRC (ECRC) and Advanced Error Reporting

## Integration

These features make the LSISAS1068E easy to integrate:

- Leverages the proven Fusion-MPT technology
- PCI Express device can use PCI-based device drivers, which reduces integration challenges and risks
- Provides unequalled performance through the Fusion-MPT architecture
- Reduces time to market with the Fusion-MPT architecture
  - Single driver binary for SAS/SATA, Ultra320 SCSI, and Fibre Channel products
  - One firmware build supports all Integrated RAID capabilities
  - Thin, easy to develop drivers
  - Reduced integration and certification effort

## Usability

These usability features are incorporated into the design:

- Simplifies cabling with point-to-point, serial architecture
- Provides drive spin-up sequencing control
- Provides up to two LED signals for each SAS/SATA phy to indicate drive activity and faults
- Provides a serialized general purpose I/O (SGPIO) interface

## Flexibility

These features increase the flexibility of the LSISAS1068E:

- Supports an 8-bit flash ROM interface, an 8-bit nonvolatile RAM (NVS RAM) interface, and a 32-bit pipelined synchronous burst SRAM (PBSRAM) interface
- Offers a flexible programming interface to tune I/O performance
- Allows mixed connections to SAS or SATA targets
- Allows a grouping of up to four phys from a Quad Port module into a wide port

- Leverages compatible connectors for SAS and SATA connections
- Supports Integrated RAID technology, which provides for Integrated Mirroring technology and/or Integrated Striping technology
- Provides 17 LED signals
- Provides four independent GPIO signals

## Reliability

These features enhance the reliability of the LSISAS1068E:

- Uses proven GigaBlaze<sup>®</sup> transceivers on both the SAS/SATA phys and the PCI Express phys
- Isolates the power and ground of I/O pads and internal chip logic
- Provides ESD protection
- Provides latch-up protection
- Has a high proportion of power and ground pins
- Integrated Mirroring technology provides physical mirroring of the boot volume

## Testability

These features enhance the testability of the LSISAS1068E:

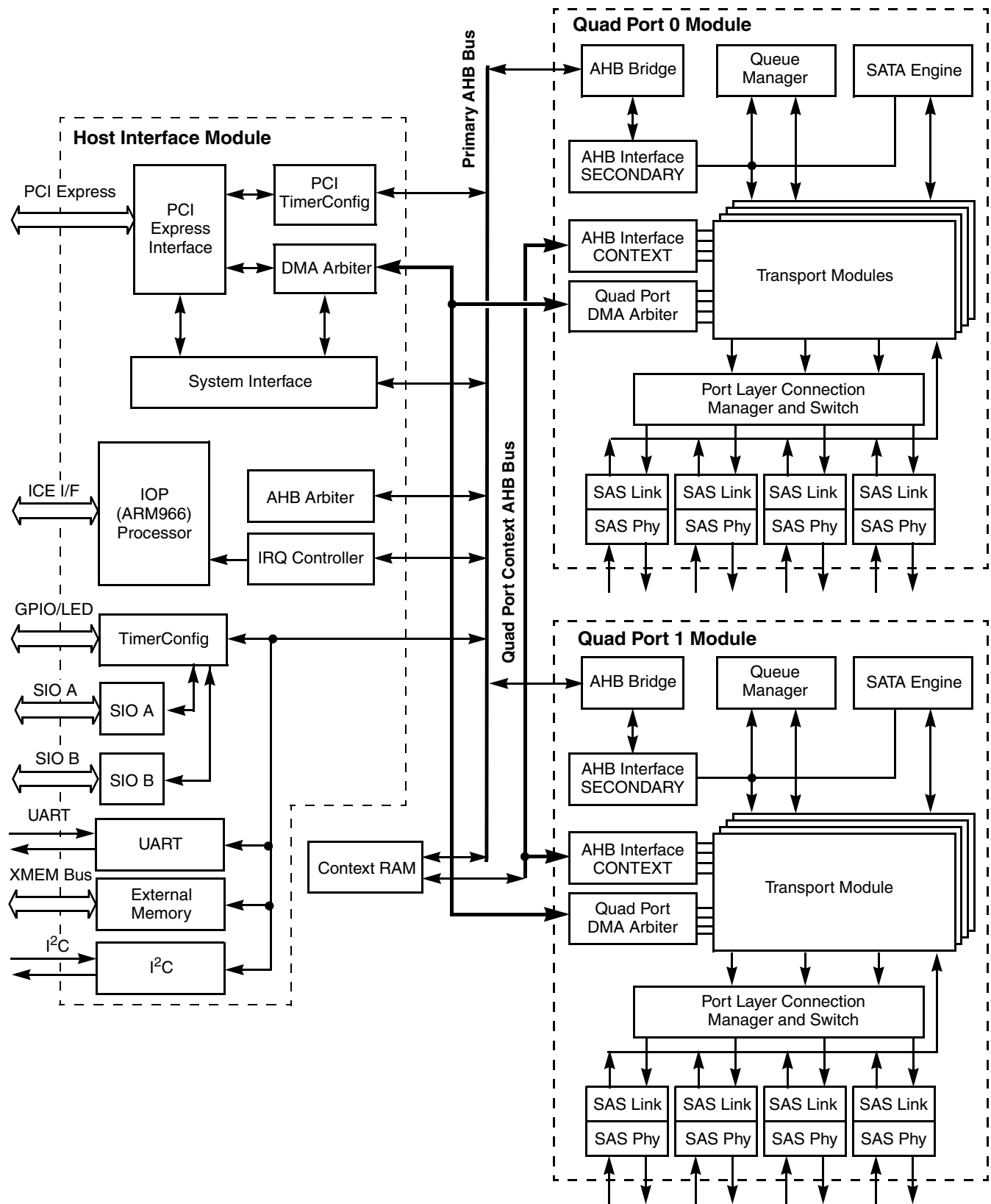
- Offers JTAG boundary scan
- Offers ARM<sup>®</sup> Multi-ICE<sup>®</sup> technology for debugging the ARM966 processor

---

## Block Diagram Description

[Figure 3](#) provides the block diagram for the LSISAS1068E. The following subsections discuss the block diagram. There is a single Host Interface module and two Quad Port modules. The Host Interface module supports the 8-lane PCI Express interface. Each Quad Port module supports four SAS phys.

**Figure 3 LSISAS1068E Block Diagram**





## Host Interface Module

The LSISAS1068E interfaces with the host through the host interface module. The host interface module contains the PCI Express interface, system interface, IOP (ARM966) processor, timer and configuration, DMA arbiter, PCI timer and configuration, SIO A, SIO B, UART, external memory, I<sup>2</sup>C, and UART blocks.

### PCI Express Interface

The PCI Express interface block supports an 8-lane PCI Express interface. This is a high bandwidth, serial interface that features point-to-point interconnects between devices and an advanced packetized and layered protocol architecture. The PCI Express software is backward compatible with previous implementations of the PCI specification.

### System Interface

In combination with the IOP, the system interface supports the Fusion-MPT architecture. The system interface efficiently passes messages between the LSISAS1068E and the host interface using a high-performance, packetized mailbox architecture. The LSISAS1068E system interface takes advantage of PCI Express point-to-point connections, thereby allowing a dedicated connection to each device with no sharing.

### IOP (ARM966) Processor

The LSISAS1068E I/O processor (IOP) controls the system interface and manages the host side of the Fusion-MPT architecture without host processor intervention, which frees the host processor for other tasks.

### Timer and Configuration

This block supports the LSISAS1068E LED and GPIO interfaces. There are 17 LED signals. The GPIO interface contains four independent GPIO signals. This block also supports internal timing adjustments and power-on sense configuration options.

## DMA Arbiter

The LSISAS1068E provides the ability to transfer system memory blocks to and from local memory through the descriptor-based DMA arbiter and router. The DMA channel includes a system DMA FIFO and the internal bus interface logic.

## PCI Timer and Configuration

This PCI timer and configuration module supports the PCI configuration register space and a power-on reset (POR).

## SIO A and SIO B

The LSISAS1068E provides two SGPIO interfaces that are compliant with the SFF-8485 specification. A typical use of the serial I/O (SIO) modules is to control LEDs. The SIO A signals are associated with Quad Port Module 0. The SIO B signals are associated with Quad Port Module 1. The SIO modules are SFF-8485 compliant.

## External Memory

The external memory controller block provides an interface for flash ROM, NVSRAM, and PBRAM devices. The external memory bus provides a 32-bit memory bus, parity checking, and chip select signals for PBRAM, NVSRAM, and flash ROM. The flash ROM and NVSRAM are capable of 8-bit accesses, while the PBRAM is capable of 32-bit accesses.

Most configurations use a flash ROM to store firmware, configuration information, and persistent data information. The LSISAS1068E uses a PBRAM to support super large drive count (SLDC) applications, or to support firmware download boot procedures. In SLDC applications, each LSISAS1068E controller can support up to 1023 drives.

## I<sup>2</sup>C

The LSISAS1068E contains an Inter-IC (I<sup>2</sup>C) block that communicates with peripherals. The I<sup>2</sup>C block operates as either a master or a slave on the bus and sustains data rates up to 400 Kbits/s. The I<sup>2</sup>C block accomplishes byte-wise bidirectional data transfers by using either an interrupt or a polling handshake at the completion of each byte. The I<sup>2</sup>C block controls all bus timing and performs bus-specific sequences.

## UART

The UART provides test and debug access to the LSISAS1068E.

## Quad Port Modules

The Quad Port modules in the LSISAS1068E implement the SSP, SMP, and STP/SATA protocols, and manage the SAS/SATA phys. There are two Quad Port modules in the LSISAS1068E. Each Quad Port module supports four phys. The following subsections describe the Quad Port modules.

### Transport Modules

The transport modules transmit frames to and from the port layer and implement the STP, SSP, and SMP protocols. Each Quad Port module has four instances of the transport module, one for each SAS/SATA phy on the LSISAS1068E. The transport modules also manage DMA transfers.

### Queue Manager

The queue manager is responsible for managing various queue structures that support the SSP, SMP, and SATA/STP protocols. The queue structures are the primary means for the IOP to initiate I/Os to the hardware, and for the hardware to notify the IOP of I/O status.

### SATA Engine

The SATA engine provides information to the transport modules to enable handling of SATA commands. The SATA engine tracks queued commands per device and provides these tags to the SATA transport layer blocks.

### Port Layer Connection Manager and Switch

The port layer connection manager and switch handles transmission requests from the transport modules and originates connection requests to the SAS links. It is also responsible for handling SAS wide port configurations.

### SAS Link

The SAS link layer manages SAS connections between initiator and target ports, data clocking, and CRC checking on transmitted data. The SAS link is also responsible for starting a link reset sequence.

## SAS Phys

The SAS phys interface to the physical layer, perform serial-to-parallel conversion of received data and parallel-to-serial conversion of transmit data, manage phy reset sequences, and perform 8b/10b encoding.

## Quad Port DMA Arbiter

Each quad port module contains a quad port arbiter that interfaces with the host interface DMA arbiter and determines bus priority between the four phys in the quad port for DMA transfers.

## Context RAM

The context RAM is a memory that is shared between the host interface module and the quad port modules. The context RAM holds a portion of the firmware.

---

## Signal Descriptions

The following subsections provide the signal descriptions for the LSISAS1068E. A “/” following the signal indicates an active LOW signal.

### PCI Express Signals

This section describes the PCI Express signals. Refer to the PCI Express specification for detailed signal descriptions.

#### PCI Express System Signals

This section describes the PCI Express system signals.

<b>P_REFCLK_P</b>	<b>PCI Express Differential Clock</b>	<b>Input</b>
	This signal provides half of the PCI Express differential clock input signal.	
<b>P_REFCLK_N</b>	<b>PCI Express Differential Clock</b>	<b>Input</b>
	This signal provides half of the PCI Express differential clock input signal.	
<b>RST/</b>	<b>Reset</b>	<b>Input</b>
	Asserting the RST/ signal causes a reset.	

## PCI Express Data Signals

This section describes the PCI Express transmit and receive signals.

<b>P_RX[7:0]+</b>	<b>PCI Express Receive Differential Data</b>	<b>Input</b>
	P_RX[x]+ provides the positive differential data receiver for PCI Express phy[x].	
<b>P_RX[7:0]–</b>	<b>PCI Express Receive Differential Data</b>	<b>Input</b>
	P_RX[x]– provides the negative differential data receiver for PCI Express phy[x].	
<b>P_TX[7:0]+</b>	<b>PCI Express Transmit Differential Data</b>	<b>Output</b>
	P_TX[x]+ provides the positive differential data transmitter for PCI Express phy[x].	
<b>P_TX[7:0]–</b>	<b>PCI Express Transmit Differential Data</b>	<b>Output</b>
	P_TX[x]– provides the negative differential data transmitter for PCI Express phy[x].	

## SAS Signals

This section describes the SAS interface signals.

<b>REFCLK_P, REFCLK_N</b>		<b>Input</b>
	These pins provide the serial differential clock. Connect a 75 MHz oscillator with an accuracy of at least $\pm 50$ ppm to these pins. To use a single-ended crystal, tie the crystal to REFCLK_P and tie REFCLK_N to a resistor termination.	
<b>RTRIM</b>	<b>Resistor Reference</b>	<b>Analog</b>
	This pin provides the analog resistor reference for the GigaBlaze transceivers. The resistor provides a reference to calibrate the 50 $\Omega$ termination.	
<b>RX[7:0]–</b>	<b>Receive Negative Differential Data</b>	<b>Input</b>
	RX[x]– provides the negative differential data receiver for SAS/SATA phy[x].	
<b>RX[7:0]+</b>	<b>Receive Positive Differential Data</b>	<b>Input</b>
	RX[x]+ provides the positive differential data receiver for SAS/SATA phy[x].	
<b>TX[7:0]–</b>	<b>Transmit Negative Differential Data</b>	<b>Output</b>
	TX[x]– provides the negative differential data transmit signal for SAS/SATA phy[x].	

<b>TX[7:0]+</b>	<b>Transmit Positive Differential Data</b> TX[x]+ provides the positive differential data transmit signal for SAS/SATA phy[x].	<b>Output</b>
-----------------	---	---------------

## I<sup>2</sup>C and UART Signals

This section describes the I<sup>2</sup>C and UART signals.

<b>ISTWI_CLK</b>	<b>I<sup>2</sup>C Clock</b> This signal provides the I <sup>2</sup> C clock signal.	<b>Input/Output</b>
<b>ISTWI_DATA</b>	<b>I<sup>2</sup>C Data</b> This signal provides the I <sup>2</sup> C data signal.	<b>Input/Output</b>
<b>UART_RX</b>	<b>UART Receive</b> This signal provides the UART receive signal.	<b>Input</b>
<b>UART_TX</b>	<b>UART Transmit</b> This signal provides the UART transmit signal.	<b>Output</b>

## Memory Interface Signals

This section describes the memory interface signals.

<b>MCLK</b>	<b>Memory Clock</b> All synchronous RAM control/data signals reference the rising edge of this clock.	<b>Output</b>
<b>ADSC/</b>	<b>Address-Strobe-Controller</b> Asserting this active LOW signal initiates read, write, or chip deselect cycles.	<b>Output</b>
<b>ADV/</b>	<b>Advance</b> Asserting this active LOW signal increments the burst address counter of the selected synchronous SRAM.	<b>Output</b>
<b>MAD[31:0]</b>	<b>Multiplexed Address/Data</b> These signals provide the address and data bus for the PBSRAM, flash ROM, and NVSRAM. These signals also provide Power-On Sense configuration functions to the LSISAS1068E. These signals are internally pulled LOW.	<b>Input/Output</b>
<b>MADP[3:0]</b>	<b>Memory Parity</b> These signals provide parity checking for MAD[31:0]. These signals are internally pulled HIGH.	<b>Input/Output</b>

<b>MOE[1:0]/</b>	<b>Memory Output Enables</b>	<b>Output</b>
	Asserting these active LOW signals enable the selected PBSRAM, flash ROM, or NVSRAM device to drive data. MOE1/ enables PBSRAM and flash ROM devices. MOE0/ enables NVSRAM devices. MOE[1:0]/ allow interleaved PBSRAM configurations.	
<b>MWE[1:0]/</b>	<b>Memory Write Enables</b>	<b>Output</b>
	The LSISAS1068E uses these active LOW bank write signals for interleaved PBSRAM configurations.	
<b>BWE[3:0]/</b>	<b>Memory Byte Write Enables</b>	<b>Output</b>
	Asserting these active LOW, byte-lane write signals enable partial word writes to the PBSRAM. BWE[3]/ and BWE[2]/ enable partial word writes to the flash ROM and the NVSRAM if FLASH_CS/ or NVSRAM_CS/ is asserted.	
<b>NVSRAM_CS/</b>	<b>NVSRAM Chip Select</b>	<b>Output</b>
	Asserting this active LOW signal selects the NVSRAM device.	
<b>PBSRAM_CS/</b>	<b>RAM Chip Select</b>	<b>Output</b>
	Asserting this active LOW signal selects the PBSRAM devices. The LSISAS1068E uses the PBSRAM to support firmware download boot and SLDC applications.	
<b>FLASH_CS/</b>	<b>Flash Chip Select</b>	<b>Output</b>
	Asserting this active LOW signal selects the flash ROM. The LSISAS1068E maps flash ROM address space into system memory space.	

## SIO Signals

This section describes the SIO A and SIO B signals. SIO A is associated with Quad Port 0. SIO B is associated with Quad Port 1.

<b>SIO_CLK_A</b>	<b>SIO Clock</b>	<b>Input/Output</b>
	This signal provides the clock signal for SIO A.	
<b>SIO_CLK_B</b>	<b>SIO Clock</b>	<b>Input/Output</b>
	This signal provides the clock signal for SIO B.	

<b>SIO_DIN_A</b>	<b>SIO Data In A</b>	<b>Input</b>
	This signal provides the data input signal to the SIO interface for Quad Port 0.	
<b>SIO_DIN_B</b>	<b>SIO Data In B</b>	<b>Input</b>
	This signal provides the data input signal to the SIO interface for Quad Port 1.	
<b>SIO_DOUT_A</b>	<b>SIO Data Out A</b>	<b>Output</b>
	This signal provides the data output signal to the SIO bus from Quad Port 0. This signal controls the Quad Port 0 LED drives.	
<b>SIO_DOUT_B</b>	<b>SIO Data Out B</b>	<b>Output</b>
	This signal provides the data output signal to the SIO bus from Quad Port 1. This signal controls the Quad Port 1 LED drives.	
<b>SIO_END_A</b>	<b>SIO End Control</b>	<b>Input/Output</b>
	The SIO module drives this output to end control of the SIO bus.	
<b>SIO_END_B</b>	<b>SIO End Control</b>	<b>Input/Output</b>
	The SIO module drives this output to end control of the SIO bus.	

## Configuration and General Purpose Signals

This section describes the configuration and general purpose pins.

<b>TST_RST/</b>	<b>Test Reset</b>	<b>Input</b>
	Asserting this signal forces the chip into a Power-On-Reset (POR) state. This signal has an internal pull-up. The LSISAS1068E does <i>not</i> have an internal POR.	
<b>REFCLK_B</b>	<b>ARM Reference Clock</b>	<b>Input</b>
	This pin provides the ARM reference clock.	
<b>MODE[7:0]</b>	<b>Mode Select</b>	<b>Input</b>
	This 8-bit bus defines operational and test modes for the chip. These pins have internal pull-downs.	
<b>FAULT_LED[7:0]/</b>	<b>Fault LED</b>	<b>Input/Output</b>
	These output signals indicate a SAS link fault.	



<b>ACTIVE_LED[7:0]/</b>	<b>Activity LED</b> These output signals indicate SAS link activity.	<b>Input/Output</b>
<b>GPIO[3:0]</b>	<b>General Purpose I/O</b> These signals provide general purpose input/output signals. These signals have internal pull-ups.	<b>Input/Output</b>
<b>HB_LED/</b>	<b>Heartbeat LED</b> Firmware intermittently asserts this signal to indicate that the IOP is operational.	<b>Output</b>

## JTAG and Test Signals

This section describes the JTAG and test signals.

<b>FSELA</b>	<b>Clock Select</b> This is a test signal. Pull this signal LOW.	<b>Input</b>
<b>SCAN_ENABLE</b>	<b>Scan Enable</b>	<b>Input</b>
<b>SCAN_MODE</b>	<b>Scan Mode</b>	<b>Input</b>
<b>TCK</b>	<b>JTAG Debug Clock</b>	<b>Input</b>
<b>TRST/</b>	<b>JTAG Debug Reset</b>	<b>Input</b>
<b>TDI</b>	<b>JTAG Debug Test Data In</b>	<b>Input</b>
<b>TDO</b>	<b>JTAG Debug Test Data Out</b>	<b>Output</b>
<b>TMS</b>	<b>JTAG Debug Test Mode Select</b>	<b>Input</b>
<b>TCK_ICE</b>	<b>Multi-ICE Debug Clock</b>	<b>Input</b>
<b>RTCK_ICE</b>	<b>Multi-ICE Debug Return Clock</b>	<b>Output</b>
<b>TRST_ICE/</b>	<b>Multi-ICE Debug Reset</b>	<b>Input</b>
<b>TDI_ICE</b>	<b>Multi-ICE Debug Test Data In</b>	<b>Input</b>
<b>TDO_ICE</b>	<b>Multi-ICE Debug Test Data Out</b>	<b>Output</b>
<b>TMS_ICE</b>	<b>Multi-ICE Debug Test Mode Select</b>	<b>Input</b>
<b>IDDT</b>	<b>IDDQ Test Mode Enable</b> This signal is active HIGH.	<b>Input</b>

<b>TN/</b>	<b>3-State Output Enable Control</b> This signal is active LOW.	<b>Input</b>
<b>PROCMON</b>	<b>Process Monitor Test Output Driver</b>	<b>Output</b>
<b>TDIODE_P</b>	<b>Anode Connection of the Thermal Diode</b>	<b>Input</b>
<b>TDIODE_VSS</b>	<b>Cathode Connection of the Thermal Diode</b>	<b>Output</b>

## Power and Ground Signals

This section describes the power and ground signals.

<b>REFPLL_VDD</b>	These signals provide 1.2 V power.	<b>Power</b>
<b>REFPLL_VSS</b>	These signals provide ground.	<b>Ground</b>
<b>VDD2</b>	These signals provide 1.2 V core power.	<b>Power</b>
<b>VDDIO33</b>	These signals provide 3.3 V I/O power.	<b>Power</b>
<b>VSS</b>	These signals provide ground.	<b>Ground</b>
<b>RX_VSS[7:0], RXB_VSS[7:0], TX_VSS[7:0], TXB_VSS[7:0]</b>	These signals provide ground for the SAS GigaBlaze core.	<b>Ground</b>
<b>RX_VDD[7:0], RXB_VDD[7:0], TX_VDD[7:0], TXB_VDD[7:0]</b>	These signals provide 1.2 V power for the SAS GigaBlaze core.	<b>Power</b>
<b>P_RX_VDD[7:0], P_RXB_VDD[7:0], P_TX_VDD[7:0], P_TXB_VDD[7:0]</b>	These signals provide 1.2 V power for the PCI Express GigaBlaze core.	<b>Power</b>
<b>P_RX_VSS[7:0], P_RXB_VSS[7:0], P_TX_VSS[7:0], P_TXB_VSS[7:0]</b>	These signals provide ground for the PCI Express GigaBlaze core.	<b>Ground</b>

---

## Pin Listing

[Table 1](#) provides the signal listing by signal name. [Table 2](#) provides the signal listing by pin name. [Figure 4](#) provides a BGA pinout diagram.

**Table 1 LSISAS1068E Pin Assignments Listed by Signal Name<sup>1</sup>**

Signal	Pin	Signal	Pin	Signal	Pin	Signal	Pin	Signal	Pin
ACTIVE_LED[0]	/H1	MOE1/	N24	N/C	Y22	P_TX_VSS4	AB14	RX5+	B8
ACTIVE_LED[1]	H2	MWE0/	T23	N/C	AA1	P_TX_VSS5	AC16	RX6-	B7
ACTIVE_LED[2]	G1	MWE1/	P24	N/C	AA5	P_TX_VSS6	Y18	RX6+	B6
ACTIVE_LED[3]	H3	N/C	B14	N/C	AA6	P_TX_VSS7	AB19	RX7-	C3
ACTIVE_LED[4]	K4	N/C	C24	N/C	AB13	P_TX0-	AE2	RX7+	B3
ACTIVE_LED[5]	K3	N/C	C25	N/C	AB26	P_TX0+	AF2	RXB_VDD0	C23
ACTIVE_LED[6]	K2	N/C	D3	N/C	AC12	P_TX1-	AE5	RXB_VDD1	C19
ACTIVE_LED[7]	M4	N/C	D23	N/C	AC13	P_TX1+	AE4	RXB_VDD2	F17
ADSC/	V22	N/C	E1	N/C	AC24	P_TX2-	AF5	RXB_VDD3	E15
ADV/	V23	N/C	E3	N/C	AD1	P_TX2+	AF6	RXB_VDD4	A12
BWE[0]/	T21	N/C	E	N/C	AD3	P_TX3-	AE9	RXB_VDD5	C10
BWE[1]/	U24	N/C	E22	N/C	AD13	P_TX3+	AF9	RXB_VDD6	E9
BWE[2]/	R23	N/C	E23	N/C	AE3	P_TX4-	AF15	RXB_VDD7	G8
BWE[3]/	W25	N/C	E24	N/C	AE13	P_TX4+	AF16	RXB_VSS0	F21
FAULT_LED[0]/	N1	N/C	F1	N/C	AF13	P_TX5-	AF18	RXB_VSS1	F19
FAULT_LED[1]/	N3	N/C	F6	NVSRAM_CS/	N26	P_TX5+	AE18	RXB_VSS2	E17
FAULT_LED[2]/	M1	N/C	F22	P_REFCLK_N	AD14	P_TX6-	AF21	RXB_VSS3	G16
FAULT_LED[3]/	L1	N/C	F23	P_REFCLK_P	AE14	P_TX6+	AF22	RXB_VSS4	F13
FAULT_LED[4]/	N4	N/C	G20	P_RX_VDD0	AB6	P_TX7-	AE23	RXB_VSS5	F11
FAULT_LED[5]/	N2	N/C	G21	P_RX_VDD1	AC7	P_TX7+	AE22	RXB_VSS6	G10
FAULT_LED[6]/	P1	N/C	H5	P_RX_VDD	2 AC9	P_TXB_VDD0	Y7	RXB_VSS7	C7
FAULT_LED[7]/	N5	N/C	H6	P_RX_VDD3	AE10	P_TXB_VDD1	AD8	SCAN_ENABLE	E4
FSCLA	E2	N/C	H21	P_RX_VDD4	AC15	P_TXB_VDD2	AB10	SCAN_MODE	F5
FLASH_CS/	P25	N/C	H23	P_RX_VDD5	AD18	P_TXB_VDD3	AA12	SIO_CLK_A	H22
GPIO[0]	V4	N/C	H25	P_RX_VDD6	AC19	P_TXB_VDD4	AF14	SIO_CLK_B	G22
GPIO[1]	Y1	N/C	J1	P_RX_VDD7	AB21	P_TXB_VDD5	AA16	SIO_DIN_A	J21
GPIO[2]	W3	N/C	J2	P_RX_VSS0	AB7	P_TXB_VDD6	AB18	SIO_DIN_B	G23
GPIO[3]	AB1	N/C	J3	P_RX_VSS1	AA9	P_TXB_VDD7	AA20	SIO_DOUT_A	D25
HB_LED/	P4	N/C	J4	P_RX_VSS2	AD9	P_TXB_VSS0	AC4	SIO_DOUT_B	D24
IDDT	AB4	N/C	J5	P_RX_VSS3	AB12	P_TXB_VSS1	AB8	SIO_END_A	E25
ISTWI_CLK	G26	N/C	J22	P_RX_VSS4	AA15	P_TXB_VSS2	AA10	SIO_END_B	D26
ISTWI_DATA	K21	N/C	K1	P_RX_VSS5	AC17	P_TXB_VSS3	AC11	TCK	AB2
MAD[0]	J26	N/C	K5	P_RX_VSS6	AA18	P_TXB_VSS4	AA14	TCK_ICE	U3
MAD[1]	H26	N/C	K6	P_RX_VSS7	AC22	P_TXB_VSS5	AB16	TDI	AC1
MAD[2]	K24	N/C	L4	P_RX0-	AF4	P_TXB_VSS6	AE19	TDI_ICE	T5
MAD[3]	J24	N/C	L5	P_RX0+	AF3	P_TXB_VSS7	AB20	TDIODE_P	V26
MAD[4]	J23	N/C	L6	P_RX1-	AE7	PBSRAM_CS/	R21	TDIODE_VSS	T22
MAD[5]	M26	N/C	L22	P_RX1+	AE6	PROCMON	AA4	TDO	AC2
MAD[6]	M23	N/C	M5	P_RX2-	AF8	REFCLK_B	B13	TDO_ICE	V3
MAD[7]	J25	N/C	M6	P_RX2+	AE8	REFCLK_N	D12	TMS	AC3
MAD[8]	K25	N/C	M21	P_RX3-	AF11	REFCLK_P	C13	TMS_ICE	U4
MAD[9]	L26	N/C	M22	P_RX3+	AF10	REFPLL_VDD	D13	TN/	AD2
MAD[10]	L23	N/C	N6	P_RX4-	AE17	REFPLL_VSS	A13	TRST/	Y4
MAD[11]	K23	N/C	N21	P_RX4+	AF17	RESERVED	H24	TRST_ICE/	W1
MAD[12]	K26	N/C	N22	P_RX5-	AF20	RESERVED	K22	TST_RST/	C2
MAD[13]	N23	N/C	N25	P_RX5+	AF19	RESERVED	P3	TX_VDD0	A23
MAD[14]	R26	N/C	P2	P_RX6-	AE21	RESERVED	P5	TX_VDD1	D18
MAD[15]	P23	N/C	P6	P_RX6+	AE20	RESERVED	T1	TX_VDD2	C17
MAD[16]	V21	N/C	P21	P_RX7-	AE25	RST/	AB3	TX_VDD3	D14
MAD[17]	Y26	N/C	P22	P_RX7+	AE24	RTCK_ICE	T4	TX_VDD4	D10
MAD[18]	W24	N/C	P26	P_RXB_VDD0	Y8	RTRIM	C14	TX_VDD5	D8
MAD[19]	U21	N/C	R1	P_RXB_VDD1	AB9	RX_VDD0	E21	TX_VDD6	C4
MAD[20]	AA26	N/C	R4	P_RXB_VDD2	AD10	RX_VDD1	D19	TX_VDD7	E5
MAD[21]	W23	N/C	R5	P_RXB_VDD3	AF12	RX_VDD2	C18	TX_VSS0	E19
MAD[22]	AA23	N/C	R6	P_RXB_VDD4	AB15	RX_VDD3	D15	TX_VSS1	G18
MAD[23]	Y23	N/C	R22	P_RXB_VDD5	AA17	RX_VDD4	B10	TX_VSS2	D16
MAD[24]	AB25	N/C	T6	P_RXB_VDD6	AD19	RX_VDD5	D9	TX_VSS3	E14
MAD[25]	AB23	N/C	T26	P_RXB_VDD7	AD23	RX_VDD6	D7	TX_VSS4	E11
MAD[26]	AB24	N/C	U1	P_RXB_VSS0	AD7	RX_VDD7	E6	TX_VSS5	A7
MAD[27]	Y21	N/C	U2	P_RXB_VSS1	Y10	RX_VSS0	D22	TX_VSS6	F8
MAD[28]	AC25	N/C	U5	P_RXB_VSS2	AA11	RX_VSS1	F18	TX_VSS7	F7
MAD[29]	AC26	N/C	U6	P_RXB_VSS3	AA13	RX_VSS2	D17	TX0-	B23
MAD[30]	AB22	N/C	U22	P_RXB_VSS4	Y16	RX_VSS3	F15	TX0+	B22
MAD[31]	AD25	N/C	V1	P_RXB_VSS5	AB17	RX_VSS4	E12	TX1-	A21
MADP[0]	L21	N/C	V2	P_RXB_VSS6	AA19	RX_VSS5	C9	TX1+	A22
MADP[1]	U26	N/C	V5	P_RXB_VSS7	AA21	RX_VSS6	F9	TX2-	A18
MADP[2]	W26	N/C	V6	P_TX_VDD0	AB5	RX_VSS7	E7	TX2+	B18
MADP[3]	AA22	N/C	V24	P_TX_VDD1	AD4	RX0-	B25	TX3-	A15
MCLK	U23	N/C	V25	P_TX_VDD2	AC8	RX0+	B24	TX3+	A16
MODE[0]	J6	N/C	W2	P_TX_VDD3	AC10	RX1-	B21	TX4-	B9
MODE[1]	H4	N/C	W4	P_TX_VDD4	AC14	RX1+	B20	TX4+	A9
MODE[2]	D1	N/C	W5	P_TX_VDD5	AD17	RX2-	A20	TX5-	A5
MODE[3]	G4	N/C	W6	P_TX_VDD6	AC18	RX2+	A19	TX5+	A6
MODE[4]	G5	N/C	W7	P_TX_VDD7	AF23	RX3-	B17	TX6-	B5
MODE[5]	D2	N/C	W21	P_TX_VSS0	AA7	RX3+	A17	TX6+	B4
MODE[6]	F4	N/C	W22	P_TX_VSS1	AA8	RX4-	A11	TX7-	A3
MODE[7]	G6	N/C	Y5	P_TX_VSS2	AF7	RX4+	A10	TX7+	A4
MOE0/	U25	N/C	Y6	P_TX_VSS3	AB11	RX5-	A8	TXB_VDD0	F20

1. N/C pins are not connected.

**Table 1 LSISAS1068E Pin Assignments Listed by Signal Name<sup>1</sup> (Cont.)**

Signal	Pin	Signal	Pin	Signal	Pin	Signal	Pin	Signal	Pin
TXB_VDD1	E18	VDDIO33	A24	VDDIO33	T25	VSS	H9	VSS	R11
TXB_VDD2	F16	VDDIO33	B2	VDDIO33	U7	VSS	H10	VSS	R13
TXB_VDD3	A14	VDDIO33	B11	VDDIO33	U20	VSS	H11	VSS	R15
TXB_VDD4	F12	VDDIO33	B12	VDDIO33	V7	VSS	H12	VSS	R17
TXB_VDD5	E10	VDDIO33	B15	VDDIO33	V20	VSS	H13	VSS	R19
TXB_VDD6	C8	VDDIO33	B16	VDDIO33	W20	VSS	H14	VSS	R24
TXB_VDD7	G7	VDDIO33	C1	VDDIO33	Y2	VSS	H15	VSS	T3
TXB_VSS0	E20	VDDIO33	C5	VDDIO33	Y9	VSS	H16	VSS	T8
TXB_VSS1	B19	VDDIO33	C6	VDDIO33	Y11	VSS	H17	VSS	T10
TXB_VSS2	E16	VDDIO33	C20	VDDIO33	Y12	VSS	H18	VSS	T12
TXB_VSS3	F14	VDDIO33	C21	VDDIO33	Y13	VSS	H19	VSS	T14
TXB_VSS4	D11	VDDIO33	C26	VDDIO33	Y14	VSS	J8	VSS	T16
TXB_VSS5	F10	VDDIO33	F2	VDDIO33	Y15	VSS	J19	VSS	T19
TXB_VSS6	E8	VDDIO33	F25	VDDIO33	Y17	VSS	K8	VSS	T24
TXB_VSS7	D4	VDDIO33	G2	VDDIO33	Y19	VSS	K10	VSS	U8
UART_RX	E26	VDDIO33	G9	VDDIO33	Y20	VSS	K12	VSS	U11
UART_TX	F26	VDDIO33	G11	VDDIO33	Y25	VSS	K14	VSS	U13
VDD2	K11	VDDIO33	G12	VDDIO33	AA2	VSS	K16	VSS	U15
VDD2	K13	VDDIO33	G13	VDDIO33	AA25	VSS	K19	VSS	U17
VDD2	K15	VDDIO33	G14	VDDIO33	AC23	VSS	L3	VSS	U19
VDD2	K17	VDDIO33	G15	VDDIO33	AD5	VSS	L8	VSS	V8
VDD2	L10	VDDIO33	G17	VDDIO33	AD6	VSS	L11	VSS	V19
VDD2	L12	VDDIO33	G19	VDDIO33	AD20	VSS	L13	VSS	W8
VDD2	L14	VDDIO33	G25	VDDIO33	AD21	VSS	L15	VSS	W9
VDD2	L16	VDDIO33	H7	VDDIO33	AD24	VSS	L17	VSS	W10
VDD2	M11	VDDIO33	H20	VDDIO33	AD26	VSS	L19	VSS	W11
VDD2	M13	VDDIO33	J7	VDDIO33	AE11	VSS	L24	VSS	W12
VDD2	M15	VDDIO33	J20	VDDIO33	AE12	VSS	M3	VSS	W13
VDD2	M17	VDDIO33	K7	VDDIO33	AE15	VSS	M8	VSS	W14
VDD2	N10	VDDIO33	K20	VDDIO33	AE16	VSS	M10	VSS	W15
VDD2	N12	VDDIO33	L2	VDDIO33	AF24	VSS	M12	VSS	W16
VDD2	N14	VDDIO33	L7	VSS	A2	VSS	M14	VSS	W17
VDD2	N16	VDDIO33	L20	VSS	A25	VSS	M16	VSS	W18
VDD2	P11	VDDIO33	L25	VSS	B1	VSS	M19	VSS	W19
VDD2	P13	VDDIO33	M2	VSS	B26	VSS	M24	VSS	Y3
VDD2	P15	VDDIO33	M7	VSS	C11	VSS	N8	VSS	Y24
VDD2	P17	VDDIO33	M20	VSS	C12	VSS	N11	VSS	AA3
VDD2	R10	VDDIO33	M25	VSS	C15	VSS	N13	VSS	AA24
VDD2	R12	VDDIO33	N7	VSS	C16	VSS	N15	VSS	AC5
VDD2	R14	VDDIO33	N20	VSS	C22	VSS	N17	VSS	AC6
VDD2	R16	VDDIO33	P7	VSS	D5	VSS	N19	VSS	AC20
VDD2	T11	VDDIO33	P20	VSS	D6	VSS	P8	VSS	AC21
VDD2	T13	VDDIO33	R2	VSS	D20	VSS	P10	VSS	AD11
VDD2	T15	VDDIO33	R7	VSS	D21	VSS	P12	VSS	AD12
VDD2	T17	VDDIO33	R20	VSS	F3	VSS	P14	VSS	AD15
VDD2	U10	VDDIO33	R25	VSS	F24	VSS	P16	VSS	AD16
VDD2	U12	VDDIO33	T2	VSS	G3	VSS	P19	VSS	AD22
VDD2	U14	VDDIO33	T7	VSS	G24	VSS	R3	VSS	AE1
VDD2	U16	VDDIO33	T20	VSS	H8	VSS	R8	VSS	AE26
									AF25

1. N/C pins are not connected.

**Table 2 LSISAS1068E Pin Assignments Listed by Pin Number<sup>1</sup>**

Pin	Signal	Pin	Signal	Pin	Signal	Pin	Signal	Pin	Signal
A2	VSS	D3	N/C	G3	VSS	K14	VSS	N21	N/C
A3	TX7-	D4	TXB_VSS7	G4	MODE[3]	K15	VDD2	N22	N/C
A4	TX7+	D5	VSS	G5	MODE[4]	K16	VSS	N23	MAD[13]
A5	TX5-	D6	VSS	G6	MODE[7]	K17	VDD2	N24	MOE1/
A6	TX5+	D7	RX_VDD6	G7	TXB_VDD7	K19	VSS	N25	N/C
A7	TX_VSS5	D8	TX_VDD5	G8	RXB_VDD7	K20	VDDIO33	N26	NVSRAM_CS/
A8	RX5-	D9	RX_VDD5	G9	VDDIO33	K21	ISTWI_DATA	P1	FAULT_LED[6]/
A9	TX4+	D10	TX_VDD4	G10	RXB_VSS6	K22	RESERVED	P2	N/C
A10	RX4+	D11	TXB_VSS4	G11	VDDIO33	K23	MAD[11]	P3	RESERVED
A11	RX4-	D12	REFCLK_N	G12	VDDIO33	K24	MAD[2]	P4	HB_LED/
A12	RXB_VDD4	D13	REFPLL_VDD	G13	VDDIO33	K25	MAD[8]	P5	RESERVED
A13	REFPLL_VSS	D14	TX_VDD3	G14	VDDIO33	K26	MAD[12]	P6	N/C
A14	TXB_VDD3	D15	RX_VDD3	G15	VDDIO33	L1	FAULT_LED[3]/	P7	VDDIO33
A15	TX3-	D16	TX_VSS2	G16	RXB_VSS3	L2	VDDIO33	P8	VSS
A16	TX3+	D17	RX_VSS2	G17	VDDIO33	L3	VSS	P10	VSS
A17	RX3+	D18	TX_VDD1	G18	TX_VSS1	L4	N/C	P11	VDD2
A18	TX2-	D19	RX_VDD1	G19	VDDIO33	L5	N/C	P12	VSS
A19	RX2+	D20	VSS	G20	N/C	L6	N/C	P13	VDD2
A20	RX2-	D21	VSS	G21	N/C	L7	VDDIO33	P14	VSS
A21	TX1-	D22	RX_VSS0	G22	SIO_CLK_B	L8	VSS	P15	VDD2
A22	TX1+	D23	N/C	G23	SIO_DIN_B	L10	VDD2	P16	VSS
A23	TX_VDD0	D24	SIO_DOUT_B	G24	VSS	L11	VSS	P17	VDD2
A24	VDDIO33	D25	SIO_DOUT_A	G25	VDDIO33	L12	VDD2	P19	VSS
A25	VSS	D26	SIO_END_B	G26	ISTWI_CLK	L13	VSS	P20	VDDIO33
B1	VSS	E1	N/C	H1	ACTIVE_LED[0]/	L14	VDD2	P21	N/C
B2	VDDIO33	E2	FSELA	H2	ACTIVE_LED[1]/	L15	VSS	P22	N/C
B3	RX7+	E3	N/C	H3	ACTIVE_LED[3]/	L16	VDD2	P23	MAD[15]
B4	TX6+	E4	SCAN_ENABLE	H4	MODE[1]	L17	VSS	P24	MWE1/
B5	TX6-	E5	TX_VDD7	H5	N/C	L19	VSS	P25	FLASH_CS/
B6	RX6+	E6	RX_VDD7	H6	N/C	L20	VDDIO33	P26	N/C
B7	RX6-	E7	RX_VSS7	H7	VDDIO33	L21	MADP[0]	R1	N/C
B8	RX5+	E8	TXB_VSS6	H8	VSS	L22	N/C	R2	VDDIO33
B9	TX4-	E9	RXB_VDD6	H9	VSS	L23	MAD[10]	R3	VSS
B10	RX_VDD4	E10	TXB_VDD5	H10	VSS	L24	VSS	R4	N/C
B11	VDDIO33	E11	TX_VSS4	H11	VSS	L25	VDDIO33	R5	N/C
B12	VDDIO33	E12	RX_VSS4	H12	VSS	L26	MAD[9]	R6	N/C
B13	REFCLK_B	E13	N/C	H13	VSS	M1	FAULT_LED[2]/	R7	VDDIO33
B14	N/C	E14	TX_VSS3	H14	VSS	M2	VDDIO33	R8	VSS
B15	VDDIO33	E15	RXB_VDD3	H15	VSS	M3	VSS	R10	VDD2
B16	VDDIO33	E16	TXB_VSS2	H16	VSS	M4	ACTIVE_LED[7]/	R11	VSS
B17	RX3-	E17	RXB_VSS2	H17	VSS	M5	N/C	R12	VDD2
B18	TX2+	E18	TXB_VDD1	H18	VSS	M6	N/C	R13	VSS
B19	TXB_VSS1	E19	TX_VSS0	H19	VSS	M7	VDDIO33	R14	VDD2
B20	RX1+	E20	TXB_VSS0	H20	VDDIO33	M8	VSS	R15	VSS
B21	RX1-	E21	RX_VDD0	H21	N/C	M10	VSS	R16	VDD2
B22	TX0+	E22	N/C	H22	SIO_CLK_A	M11	VDD2	R17	VSS
B23	TX0-	E23	N/C	H23	N/C	M12	VSS	R19	VSS
B24	RX0+	E24	N/C	H24	RESERVED	M13	VDD2	R20	VDDIO33
B25	RX0-	E25	SIO_END_A	H25	N/C	M14	VSS	R21	PBSRAM_CS/
B26	VSS	E26	UART_RX	H26	MAD[1]	M15	VDD2	R22	N/C
C1	VDDIO33	F1	N/C	J1	N/C	M16	VSS	R23	BWE[2]/
C2	TST_RST/	F2	VDDIO33	J2	N/C	M17	VDD2	R24	VSS
C3	RX7-	F3	VSS	J3	N/C	M19	VSS	R25	VDDIO33
C4	TX_VDD6	F4	MODE[6]	J4	N/C	M20	VDDIO33	R26	MAD[14]
C5	VDDIO33	F5	SCAN_MODE	J5	N/C	M21	N/C	T1	RESERVED
C6	VDDIO33	F6	N/C	J6	MODE[0]	M22	N/C	T2	VDDIO33
C7	RXB_VSS7	F7	TX_VSS7	J7	VDDIO33	M23	MAD[6]	T3	VSS
C8	TXB_VDD6	F8	TX_VSS6	J8	VSS	M24	VSS	T4	RTCK_ICE
C9	RX_VSS5	F9	RX_VSS6	J19	VSS	M25	VDDIO33	T5	TDI_ICE
C10	RXB_VDD5	F10	TXB_VSS5	J20	VDDIO33	M26	MAD[5]	T6	N/C
C11	VSS	F11	RXB_VSS5	J21	SIO_DIN_A	N1	FAULT_LED[0]/	T7	VDDIO33
C12	VSS	F12	TXB_VDD4	J22	N/C	N2	FAULT_LED[5]/	T8	VSS
C13	REFCLK_P	F13	RXB_VSS4	J23	MAD[4]	N3	FAULT_LED[11]/	T10	VSS
C14	RTRIM	F14	TXB_VSS3	J24	MAD[3]	N4	FAULT_LED[4]/	T11	VDD2
C15	VSS	F15	RX_VSS3	J25	MAD[7]	N5	FAULT_LED[7]/	T12	VSS
C16	VSS	F16	TXB_VDD2	J26	MAD[0]	N6	N/C	T13	VDD2
C17	TX_VDD2	F17	RXB_VDD2	K1	N/C	N7	VDDIO33	T14	VSS
C18	RX_VDD2	F18	RX_VSS1	K2	ACTIVE_LED[6]/	N8	VSS	T15	VDD2
C19	RXB_VDD1	F19	RXB_VSS1	K3	ACTIVE_LED[5]/	N10	VDD2	T16	VSS
C20	VDDIO33	F20	TXB_VDD0	K4	ACTIVE_LED[4]/	N11	VSS	T17	VDD2
C21	VDDIO33	F21	RXB_VSS0	K5	N/C	N12	VDD2	T19	VSS
C22	VSS	F22	N/C	K6	N/C	N13	VSS	T20	VDDIO33
C23	RXB_VDD0	F23	N/C	K7	VDDIO33	N14	VDD2	T21	BWE[0]/
C24	N/C	F24	VSS	K8	VSS	N15	VSS	T22	TDIODE_VSS
C25	N/C	F25	VDDIO33	K10	VSS	N16	VDD2	T23	MWE0/
C26	VDDIO33	F26	UART_TX	K11	VDD2	N17	VSS	T24	VSS
D1	MODE[2]	G1	ACTIVE_LED[2]/	K12	VSS	N19	VSS	T25	VDDIO33
D2	MODE[5]	G2	VDDIO33	K13	VDD2	N20	VDDIO33	T26	N/C

1. N/C pins are not connected.

**Table 2 LSISAS1068E Pin Assignments Listed by Pin Number<sup>1</sup> (Cont.)**

Pin	Signal	Pin	Signal	Pin	Signal	Pin	Signal	Pin	Signal
U1	N/C	W10	VSS	AA7	P_TX_VSS0	AC4	P_TXB_VSS0	AE1	VSS
U2	N/C	W11	VSS	AA8	P_TX_VSS1	AC5	VSS	AE2	P_TX0-
U3	TCK_ICE	W12	VSS	AA9	P_RX_VSS1	AC6	VSS	AE3	N/C
U4	TMS_ICE	W13	VSS	AA10	P_TXB_VSS2	AC7	P_RX_VDD1	AE4	P_TX1+
U5	N/C	W14	VSS	AA11	P_RXB_VSS2	AC8	P_TX_VDD2	AE5	P_TX1-
U6	N/C	W15	VSS	AA12	P_TXB_VDD3	AC9	P_RX_VDD2	AE6	P_RX1+
U7	VDDIO33	W16	VSS	AA13	P_RXB_VSS3	AC10	P_TX_VDD3	AE7	P_RX1-
U8	VSS	W17	VSS	AA14	P_TXB_VSS4	AC11	P_TXB_VSS3	AE8	P_RX2+
U10	VDD2	W18	VSS	AA15	P_RX_VSS4	AC12	N/C	AE9	P_TX3-
U11	VSS	W19	VSS	AA16	P_TXB_VDD5	AC13	N/C	AE10	P_RX_VDD3
U12	VDD2	W20	VDDIO33	AA17	P_RXB_VDD5	AC14	P_TX_VDD4	AE11	VDDIO33
U13	VSS	W21	N/C	AA18	P_RX_VSS6	AC15	P_RX_VDD4	AE12	VDDIO33
U14	VDD2	W22	N/C	AA19	P_RXB_VSS6	AC16	P_TX_VSS5	AE13	N/C
U15	VSS	W23	MAD[21]	AA20	P_TXB_VDD7	AC17	P_RX_VSS5	AE14	P_REFCLK_P
U16	VDD2	W24	MAD[18]	AA21	P_RXB_VSS7	AC18	P_TX_VDD6	AE15	VDDIO33
U17	VSS	W25	BWE[3]	AA22	MADP[3]	AC19	P_RX_VDD6	AE16	VDDIO33
U19	VSS	W26	MADP[2]	AA23	MAD[22]	AC20	VSS	AE17	P_RX4-
U20	VDDIO33	Y1	GPIO[1]	AA24	VSS	AC21	VSS	AE18	P_TX5+
U21	MAD[19]	Y2	VDDIO33	AA25	VDDIO33	AC22	P_RX_VSS7	AE19	P_TXB_VSS6
U22	N/C	Y3	VSS	AA26	MAD[20]	AC23	VDDIO33	AE20	P_RX6+
U23	MCLK	Y4	TRST/	AB1	GPIO[3]	AC24	N/C	AE21	P_RX6-
U24	BWE[1]	Y5	N/C	AB2	TCK	AC25	MAD[28]	AE22	P_TX7+
U25	MOE0/	Y6	N/C	AB3	RST/	AC26	MAD[29]	AE23	P_TX7-
U26	MADP[1]	Y7	P_TXB_VDD0	AB4	IDDT	AD1	N/C	AE24	P_RX7+
V1	N/C	Y8	P_RXB_VDD0	AB5	P_TX_VDD0	AD2	TN/	AE25	P_RX7-
V2	N/C	Y9	VDDIO33	AB6	P_RX_VDD0	AD3	N/C	AE26	VSS
V3	TDO_ICE	Y10	P_RXB_VSS1	AB7	P_RX_VSS0	AD4	P_TX_VDD1	AF2	P_TX0+
V4	GPIO[0]	Y11	VDDIO33	AB8	P_TXB_VSS1	AD5	VDDIO33	AF3	P_RX0+
V5	N/C	Y12	VDDIO33	AB9	P_RXB_VDD1	AD6	VDDIO33	AF4	P_RX0-
V6	N/C	Y13	VDDIO33	AB10	P_TXB_VDD2	AD7	P_RXB_VSS0	AF5	P_TX2-
V7	VDDIO33	Y14	VDDIO33	AB11	P_TX_VSS3	AD8	P_TXB_VDD1	AF6	P_TX2+
V8	VSS	Y15	VDDIO33	AB12	P_RX_VSS3	AD9	P_RX_VSS2	AF7	P_TX_VSS2
V19	VSS	Y16	P_RXB_VSS4	AB13	N/C	AD10	P_RXB_VDD2	AF8	P_RX2-
V20	VDDIO33	Y17	VDDIO33	AB14	P_TX_VSS4	AD11	VSS	AF9	P_TX3+
V21	MAD[16]	Y18	P_TX_VSS6	AB15	P_RXB_VDD4	AD12	VSS	AF10	P_RX3+
V22	ADSC/	Y19	VDDIO33	AB16	P_TXB_VSS5	AD13	N/C	AF11	P_RX3-
V23	ADV/	Y20	VDDIO33	AB17	P_RXB_VSS5	AD14	P_REFCLK_N	AF12	P_RXB_VDD3
V24	N/C	Y21	MAD[27]	AB18	P_TXB_VDD6	AD15	VSS	AF13	N/C
V25	N/C	Y22	N/C	AB19	P_TX_VSS7	AD16	VSS	AF14	P_TXB_VDD4
V26	TDIODE_P	Y23	MAD[23]	AB20	P_TXB_VSS7	AD17	P_TX_VDD5	AF15	P_TX4+
W1	TRST_ICE/	Y24	VSS	AB21	P_RX_VDD7	AD18	P_RX_VDD5	AF16	P_TX4-
W2	N/C	Y25	VDDIO33	AB22	MAD[30]	AD19	P_RXB_VDD6	AF17	P_RX4+
W3	GPIO[2]	Y26	MAD[17]	AB23	MAD[25]	AD20	VDDIO33	AF18	P_TX5-
W4	N/C	AA1	N/C	AB24	MAD[26]	AD21	VDDIO33	AF19	P_RX5+
W5	N/C	AA2	VDDIO33	AB25	MAD[24]	AD22	VSS	AF20	P_RX5-
W6	N/C	AA3	VSS	AB26	N/C	AD23	P_RXB_VDD7	AF21	P_TX6-
W7	N/C	AA4	PROCMON	AC1	TDI	AD24	VDDIO33	AF22	P_TX6+
W8	VSS	AA5	N/C	AC2	TDO	AD25	MAD[31]	AF23	P_TX_VDD7
W9	VSS	AA6	N/C	AC3	TMS	AD26	VDDIO33	AF24	VDDIO33
								AF25	VSS

1. N/C pins are not connected.

**Figure 4 LSISAS1068E 636 EPBGA-T Diagram – Top View (Sheet 1 of 2)**

*	1	2	3	4	5	6	7	8	9	10	11	12	13
A		VSS	TX7-	TX7+	TX5-	TX5+	TX_VSS5	RX5-	TX4+	RX4+	RX4-	RXB_VDD4	REFPLL_VSS
B	VSS	VDDI033	RX7+	TX6+	TX6-	RX6+	RX6-	RX5+	TX4-	RX_VDD4	VDDI033	VDDI033	REFCLK_B
C	VDDI033	TST_RST/	RX7-	TX_VDD6	VDDI033	VDDI033	RXB_VSS7	TXB_VDD6	RX_VSS5	RXB_VDD5	VSS	VSS	REFCLK_P
D	MODE[2]	MODE[5]	N/C	TXB_VSS7	VSS	VSS	RX_VDD6	TX_VDD5	RX_VDD5	TX_VDD4	TXB_VSS4	REFCLK_N	REFPLL_VDD
E	N/C	FSELA	N/C	SCAN_ENABLE	TX_VDD7	RX_VDD7	RX_VSS7	TXB_VSS6	RXB_VDD6	TXB_VDD5	TX_VSS4	RX_VSS4	N/C
F	N/C	VDDI033	VSS	MODE[6]	SCAN_MODE	N/C	TX_VSS7	TX_VSS6	RX_VSS6	TXB_VSS5	RXB_VSS5	TXB_VDD4	RXB_VSS4
G	ACTIVE_LED[2]/	VDDI033	VSS	MODE[3]	MODE[4]	MODE[7]	TXB_VDD7	RXB_VDD7	VDDI033	RXB_VSS6	VDDI033	VDDI033	VDDI033
H	ACTIVE_LED[0]/	ACTIVE_LED[1]/	ACTIVE_LED[3]/	MODE[1]	N/C	N/C	VDDI033	VSS	VSS	VSS	VSS	VSS	VSS
J	N/C	N/C	N/C	N/C	N/C	MODE[0]	VDDI033	VSS					
K	N/C	ACTIVE_LED[6]/	ACTIVE_LED[5]/	ACTIVE_LED[4]/	N/C	N/C	VDDI033	VSS					
L	FAULT_LED[3]/	VDDI033	VSS	N/C	N/C	N/C	VDDI033	VSS	VSS	VDD2	VSS	VDD2	VSS
M	FAULT_LED[2]/	VDDI033	VSS	ACTIVE_LED[7]/	N/C	N/C	VDDI033	VSS	VSS	VDD2	VSS	VDD2	VSS
N	FAULT_LED[0]/	FAULT_LED[5]/	FAULT_LED[1]/	FAULT_LED[4]/	FAULT_LED[7]/	N/C	VDDI033	VSS	VDD2	VSS	VDD2	VSS	VSS
P	FAULT_LED[6]/	N/C	RE-SERVED	HB_LED/	RE-SERVED	N/C	VDDI033	VSS	VSS	VDD2	VSS	VDD2	VSS
R	N/C	VDDI033	VSS	N/C	N/C	N/C	VDDI033	VSS	VDD2	VSS	VDD2	VSS	VSS
T	RE-SERVED	VDDI033	VSS	RTCK_ICE	TDI_ICE	N/C	VDDI033	VSS	VSS	VDD2	VSS	VDD2	VSS
U	N/C	N/C	TCK_ICE	TMS_ICE	N/C	N/C	VDDI033	VSS	VDD2	VSS	VDD2	VSS	VSS
V	N/C	N/C	TDO_ICE	GPIO[0]	N/C	N/C	VDDI033	VSS					
W	TRST_ICE/	N/C	GPIO[2]	N/C	N/C	N/C	N/C	VSS	VSS	VSS	VSS	VSS	VSS
Y	GPIO[1]	VDDI033	VSS	TRST/	N/C	N/C	P_TXB_VDD0	P_RXB_VDD0	VDDI033	P_RXB_VSS1	VDDI033	VDDI033	VDDI033
AA	N/C	VDDI033	VSS	PROC-MON	N/C	N/C	P_TX_VSS0	P_TX_VSS1	P_RX_VSS1	P_TXB_VSS2	P_RXB_VSS2	P_TXB_VDD3	P_RXB_VSS3
AB	GPIO[3]	TCK	RST/	IDDT	P_TX_VDD0	P_RX_VDD0	P_RX_VSS0	P_TXB_VSS1	P_RXB_VDD1	P_TXB_VDD2	P_TX_VSS3	P_RX_VSS3	N/C
AC	TDI	TD0	TMS	P_TXB_VSS0	VSS	VSS	P_RX_VDD1	P_TX_VDD2	P_RX_VDD2	P_TX_VDD3	P_TXB_VSS3	N/C	N/C
AD	N/C	TN/	N/C	P_TX_VDD1	VDDI033	VDDI033	P_RXB_VSS0	P_TXB_VDD1	P_RX_VSS2	P_RXB_VDD2	VSS	VSS	N/C
AE	VSS	P_TX0-	N/C	P_TX1+	P_TX1-	P_RX1+	P_RX1-	P_RX2+	P_TX3-	P_RX_VDD3	VDDI033	VDDI033	N/C
AF		P_TX0+	P_RX0+	P_RX0-	P_TX2-	P_TX2+	P_TX_VSS2	P_RX2-	P_TX3+	P_RX3+	P_RX3-	P_RXB_VDD3	N/C



**Figure 4 LSISAS1068E 636 EPBGA-T Diagram – Top View (Sheet 2 of 2)**

14	15	16	17	18	19	20	21	22	23	24	25	26	*
TXB_VDD3	TX3-	TX3+	RX3+	TX2-	RX2+	RX2-	TX1-	TX1+	TX_VDD0	VDDI033	VSS		A
N/C	VDDI033	VDDI033	RX3-	TX2+	TXB_VSS1	RX1+	RX1-	TX0+	TX0-	RX0+	RX0-	VSS	B
RTRIM	VSS	VSS	TX_VDD2	RX_VDD2	RXB_VDD1	VDDI033	VDDI033	VSS	RXB_VDD0	N/C	N/C	VDDI033	C
TX_VDD3	RX_VDD3	TX_VSS2	RX_VSS2	TX_VDD1	RX_VDD1	VSS	VSS	RX_VSS0	N/C	SIO_DOUT_B	SIO_DOUT_A	SIO_END_B	D
TX_VSS3	RXB_VDD3	TXB_VSS2	RXB_VSS2	TXB_VDD1	TX_VSS0	TXB_VSS0	RX_VDD0	N/C	N/C	N/C	SIO_END_A	UART_RX	E
TXB_VSS3	RX_VSS3	TXB_VDD2	RXB_VDD2	RX_VSS1	RXB_VSS1	TXB_VDD0	RXB_VSS0	N/C	N/C	VSS	VDDI033	UART_TX	F
VDDI033	VDDI033	RXB_VSS3	VDDI033	TX_VSS1	VDDI033	N/C	N/C	SIO_CLK_B	SIO_DIN_B	VSS	VDDI033	ISTWI_CLK	G
VSS	VSS	VSS	VSS	VSS	VSS	VDDI033	N/C	SIO_CLK_A	N/C	RE-SERVED	N/C	MAD[1]	H
					VSS	VDDI033	SIO_DIN_A	N/C	MAD[4]	MAD[3]	MAD[7]	MAD[0]	J
VSS	VDD2	VSS	VDD2		VSS	VDDI033	ISTWI_DATA	RE-SERVED	MAD[11]	MAD[2]	MAD[8]	MAD[12]	K
VDD2	VSS	VDD2	VSS		VSS	VDDI033	MADP[0]	N/C	MAD[10]	VSS	VDDI033	MAD[9]	L
VSS	VDD2	VSS	VDD2		VSS	VDDI033	N/C	N/C	MAD[6]	VSS	VDDI033	MAD[5]	M
VDD2	VSS	VDD2	VSS		VSS	VDDI033	N/C	N/C	MAD[13]	MOE1/	N/C	NVSRAM_CS/	N
VSS	VDD2	VSS	VDD2		VSS	VDDI033	N/C	N/C	MAD[15]	MWE1/	FLASH_CS/	N/C	P
VDD2	VSS	VDD2	VSS		VSS	VDDI033	PBSRAM_CS/	N/C	BWE[2]/	VSS	VDDI033	MAD[14]	R
VSS	VDD2	VSS	VDD2		VSS	VDDI033	BWE[0]/	TDIODE_VSS	MWE0/	VSS	VDDI033	N/C	T
VDD2	VSS	VDD2	VSS		VSS	VDDI033	MAD[19]	N/C	MCLK	BWE[1]/	MOE0/	MADP[1]	U
					VSS	VDDI033	MAD[16]	ADSC/	ADV/	N/C	N/C	TDIODE_P	V
VSS	VSS	VSS	VSS	VSS	VSS	VDDI033	N/C	N/C	MAD[21]	MAD[18]	BWE[3]/	MADP[2]	W
VDDI033	VDDI033	P_RXB_VSS4	VDDI033	P_TX_VSS6	VDDI033	VDDI033	MAD[27]	N/C	MAD[23]	VSS	VDDI033	MAD[17]	Y
P_TXB_VSS4	P_RX_VSS4	P_TXB_VDD5	P_RXB_VDD5	P_RX_VSS6	P_RXB_VSS6	P_TXB_VDD7	P_RXB_VSS7	MADP[3]	MAD[22]	VSS	VDDI033	MAD[20]	AA
P_TX_VSS4	P_RXB_VDD4	P_TXB_VSS5	P_RXB_VSS5	P_TXB_VDD6	P_TX_VSS7	P_TXB_VSS7	P_RX_VDD7	MAD[30]	MAD[25]	MAD[26]	MAD[24]	N/C	AB
P_TX_VDD4	P_RX_VDD4	P_TX_VSS5	P_RX_VSS5	P_TX_VDD6	P_RX_VDD6	VSS	VSS	P_RX_VSS7	VDDI033	N/C	MAD[28]	MAD[29]	AC
P_REF_CLK_N	VSS	VSS	P_TX_VDD5	P_RX_VDD5	P_RXB_VDD6	VDDI033	VDDI033	VSS	P_RXB_VDD7	VDDI033	MAD[31]	VDDI033	AD
P_REF_CLK_P	VDDI033	VDDI033	P_RX4-	P_TX5+	P_TXB_VSS6	P_RX6+	P_RX6-	P_TX7+	P_TX7-	P_RX7+	P_RX7-	VSS	AE
P_TXB_VDD4	P_TX4-	P_TX4+	P_RX4+	P_TX5-	P_RX5+	P_RX5-	P_TX6-	P_TX6+	P_TX_VDD7	VDDI033	VSS		AF

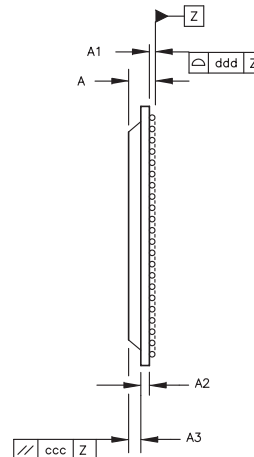
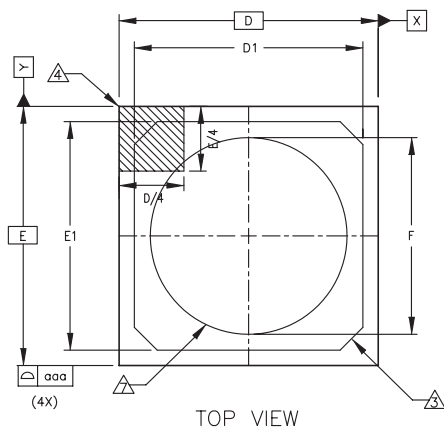
---

## Package Drawing

The LSISAS1068E uses a 636 EPBGA-T package. The package code is 8C. [Figure 5](#) provides the package drawing.

**Figure 5 636-Ball EPBGA-T (8C) Mechanical Drawing (Sheet 1 of 3)**

REVISIONS			
APPROVAL	DATE	DESCRIPTION	REV
C. Fishley	08-13-04	ADD PACKAGE (uo, 3w, ow, 82)	8
L. Mora	01-24-05	ADD PACKAGE (gz)	9
L. Mora	05-26-05	Changed "F" min from 19.5 to 17.5.	10
L. Mora	08-22-05	Add Package (aa2au)	11
M.Othieno	10-21-05	Add Package (aa2a3)	12
C. Fishley	10-26-05	Add Package (7o, uy)	13
A. Lim	02-22-06	Add Package (1N)	14



SYM	MIN	NOM	MAX
A	—	—	2.50
A1	0.40	—	—
A2	0.25	—	0.70
A3	—	—	1.25
b	0.50	—	0.70
D	27.00 BSC		
D1	23.00	—	25.00
E	27.00 BSC		
E1	23.00	—	25.00
e	1.00 BSC		
F	17.5	—	21.50

DIMENSION	[e] = 1.00
aaa	0.20
ccc	0.35
ddd	0.15
eee	0.25
fff	0.10

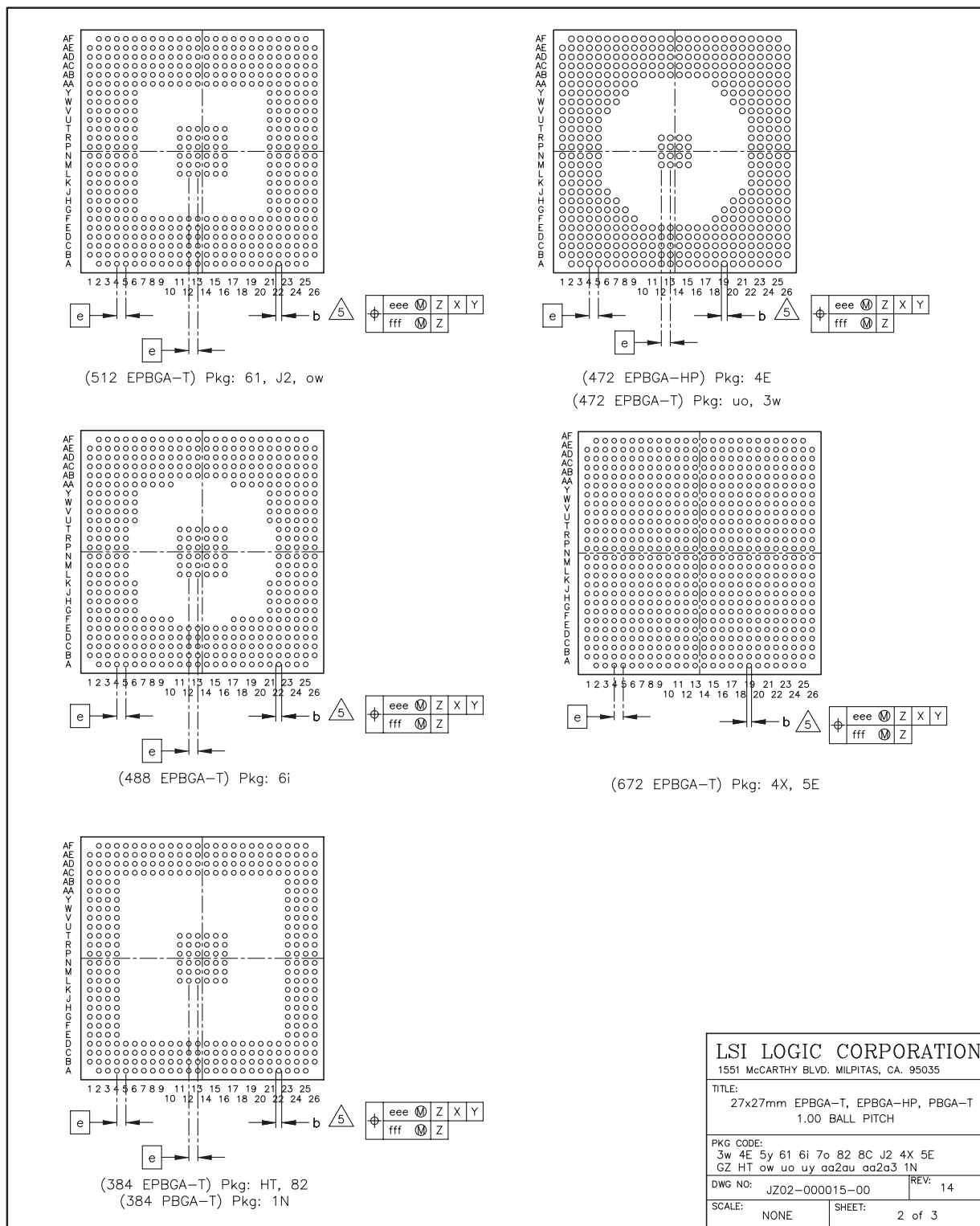
NOTES:

- 1 DIMENSIONING AND TOLERANCING PER ASME Y14.5M-1994.
- 2 ALL DIMENSIONS IN MM.
- 3 CORNER DETAIL IS LSI LOGIC CORPORATION OPTION.
- 4 DETAILS OF PIN 1 IDENTIFIER ARE OPTIONAL, AND MAY CONSIST OF INK, LASER MARK OR METALLIZED MARKING, BUT MUST BE LOCATED WITHIN THE ZONE INDICATED
- 5 JEDEC CODE MS-034.
- 6 PRIMARY DATUM Z AND SEATING PLANE ARE DEFINED BY THE SPHERICAL CROWNS OF THE SOLDER BALLS.
- 7 HEAT SPREADER OUTLINE.

<b>LSI LOGIC CORPORATION</b>	
1551 McCARTHY BLVD. MILPITAS, CA. 95035	
TITLE: 27x27mm EPBGA-T, EPBGA-HP, PBGA-T 1.00 BALL PITCH	
PKG CODE: 3w 4E 5y 6I 6I 7o 82 8C J2 4X 5E GZ HT ow uo uy aa2au aa2a3 1N	
DWG NO: JZ02-000015-00	REV: 14
SCALE: NONE	SHEET: 1 of 3

**Important:** This drawing may not be the latest version. For board layout and manufacturing, obtain the most recent engineering drawings from your LSI marketing representative by requesting the outline drawing for package code 8C.

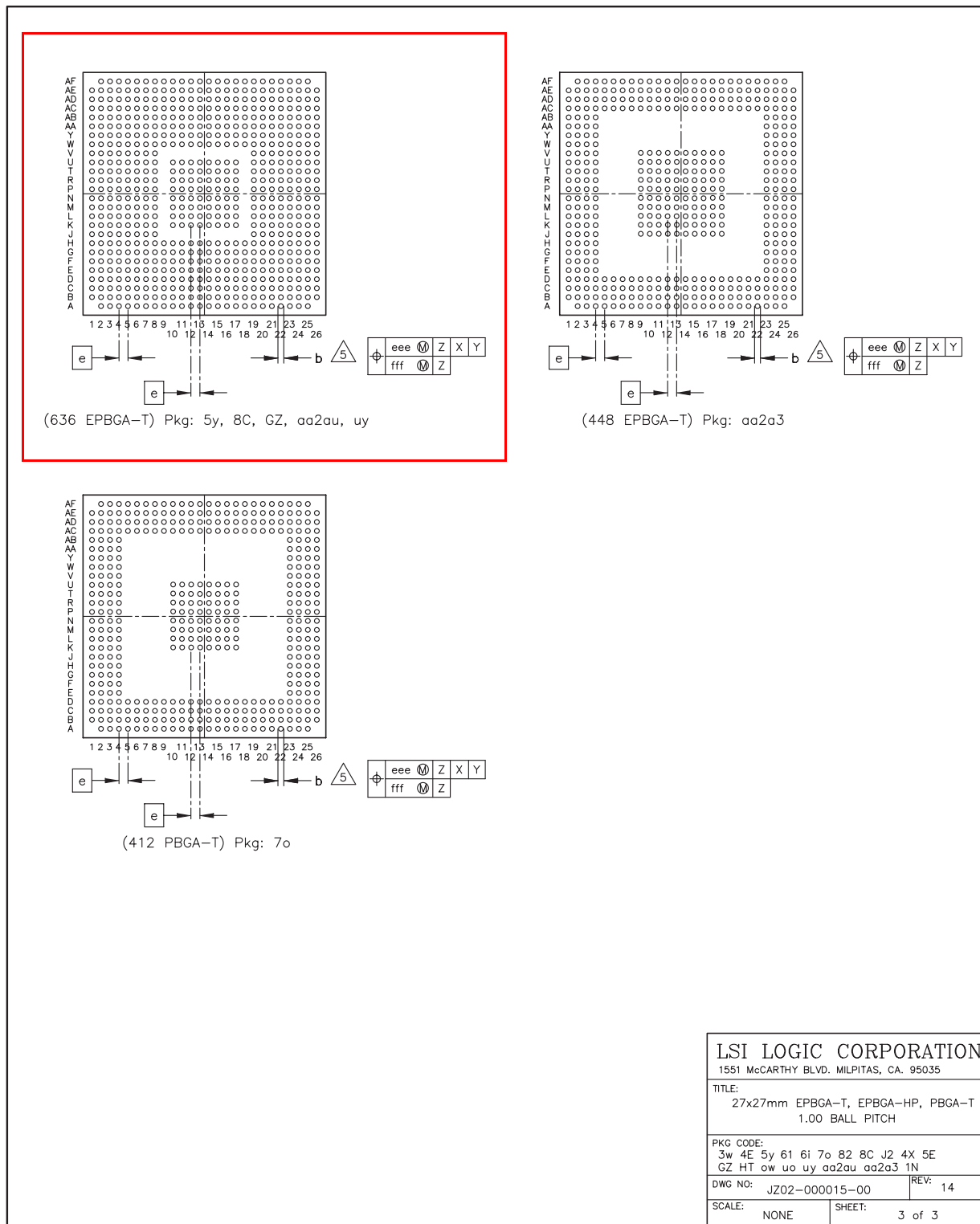
**Figure 5 636-Ball EPBGA-T (8C) Mechanical (Sheet 2 of 3); Bottom View (Cont.)**



<b>LSI LOGIC CORPORATION</b>	
1551 McCARTHY BLVD. MILPITAS, CA. 95035	
TITLE: 27x27mm EPBGA-T, EPBGA-HP, PBGA-T 1.00 BALL PITCH	
PKG CODE: 3w 4E 5y 6i 6j 7o 82 8C J2 4X 5E GZ HT ow uo uy aa2au aa2a3 1N	
DWG NO: JZ02-000015-00	REV: 14
SCALE: NONE	SHEET: 2 of 3

**Important:** This drawing may not be the latest version. For board layout and manufacturing, obtain the most recent engineering drawings from your LSI marketing representative by requesting the outline drawing for package code 8C.

**Figure 5 636-Ball EPBGA-T (8C) Mechanical (Sheet 3 of 3); Bottom View (Cont.)**



**Important:** This drawing may not be the latest version. For board layout and manufacturing, obtain the most recent engineering drawings from your LSI marketing representative by requesting the outline drawing for package code 8C.

---

## Headquarters

LSI Logic Corporation  
North American Headquarters  
Milpitas CA  
Tel: 408.433.8000

LSI Logic Europe Ltd.  
European Headquarters  
Bracknell England  
Tel: 44.1344.413200  
Fax: 44.1344.413254

LSI Logic K.K.  
Headquarters  
Tokyo Japan  
Tel: 81.3.5463.7821  
Fax: 81.3.5463.7820

AP  
Doc. No. DB08-000274-03

To receive product literature, visit us at <http://www.lsi.com>.  
For a current list of our distributors, sales offices, and design resource centers, view our web page located at <http://www.lsilogic.com/contacts/index.html>.

## ISO 9000 Certified

This document contains proprietary information of LSI Logic Corporation. The information contained herein is not to be used by or disclosed to third parties without the express written permission of an officer of LSI Logic Corporation.

LSI Logic, the LSI Logic logo design, Fusion-MPT, Gflx, GigaBlaze, Integrated Mirroring, Integrated RAID, and Integrated Striping are trademarks or registered trademarks of LSI Logic Corporation. ARM and Multi-ICE are registered trademarks of ARM Ltd., used under license. PCI-X is a registered trademark of PCI SIG. All other brand and product names may be trademarks of their respective companies.

LSI Logic products are not intended for use in life-support appliances, devices, or systems. Use of any LSI Logic product in such applications without written consent of the appropriate LSI Logic officer is prohibited.

Purchase of I<sup>2</sup>C components of LSI Logic Corporation, or one of its sublicensed Associated Companies, conveys a license under the Philips I<sup>2</sup>C Patent Rights to use these components in an I<sup>2</sup>C system, provided that the system conforms to the I<sup>2</sup>C standard Specification as defined by Philips.

LSI Logic Corporation reserves the right to make changes to any products and services herein at any time without notice. LSI Logic does not assume any responsibility or liability arising out of the application or use of any product or service described herein, except as expressly agreed to in writing by LSI Logic; nor does the purchase, lease, or use of a product or service from LSI Logic convey a license under any patent rights, copyrights, trademark rights, or any other of the intellectual property rights of LSI Logic or of third parties.