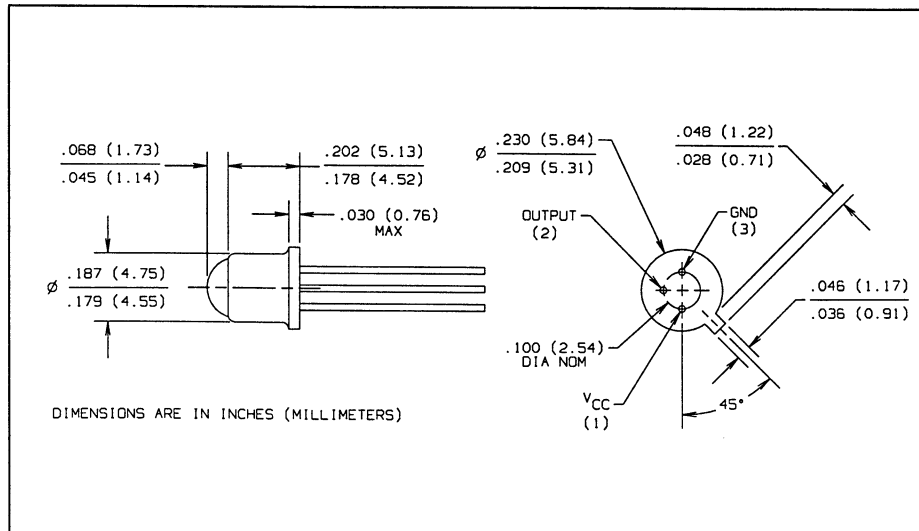
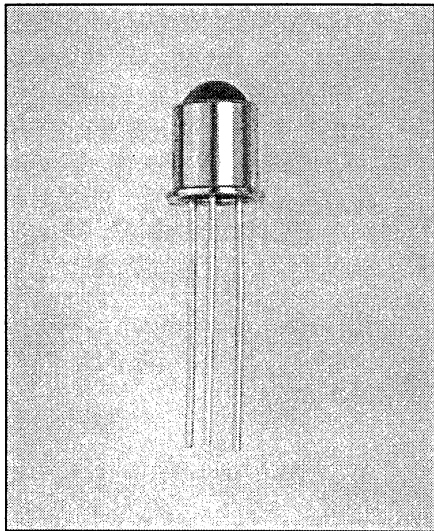


# Photologic<sup>®</sup> Hermetic Sensor Types OPL820, OPL821 Series



## Features

- High sensitivity
- Built in voltage regulator
- Direct TTL/LSTTL interface
- TO-18 hermetic package
- Mechanically and spectrally matched to OP130 and OP231 series LED's
- Data rate to 200 kBaud

## Description

The OPL820, OPL820-OC, OPL821, and OPL821-OC consist of a photodiode, a linear amplifier, and a Schmitt trigger on a single monolithic silicon chip. The output is an NPN transistor with either a 10k pull-up resistor to V<sub>CC</sub> or an open collector (-OC versions). The output polarity is either a buffer (OPL820 versions, output is high when the detector illuminated) or an inverter (OPL821 versions, output is low when the detector is illuminated). The package is a standard glass lensed hermetic TO-18. The output is capable of directly driving 10 TTL loads.

## Absolute Maximum Ratings (T<sub>A</sub> = 25° C unless otherwise noted.)

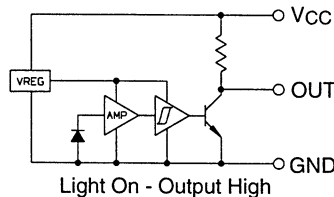
Supply Voltage	18 V
Storage Temperature Range	-55° C to +125° C
Operating Temperature Range	-40° C to +100° C
Lead Soldering Temperature	240° C
Power Dissipation	200 mW <sup>(2)</sup>
Duration of Output Short to V <sub>CC</sub>	1 sec.
Output Voltage (High State)	30 V
Output Current Sink (Low State)	16 mA

### Notes:

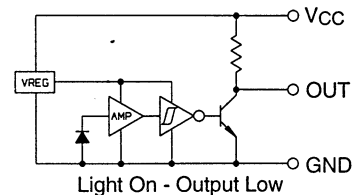
- (1) RMA flux is recommended. Soldering time may be extended to 10 seconds when flow soldering. Max. 20 grams of force may be applied to leads while at soldering temperatures.
- (2) Derate linearly 5.7 mW/° C above 90° C.
- (3) Light measurements are made with an LED source having a wavelength of 935 nm.

## Schematic

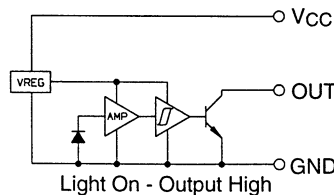
OPL820 Buffer/10KΩ PU



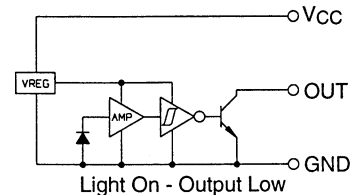
OPL821 Inverter/10KΩ PU



OPL820-OC Buffer/OC



OPL821-OC Inverter/OC



# Types OPL820, OPL821 Series

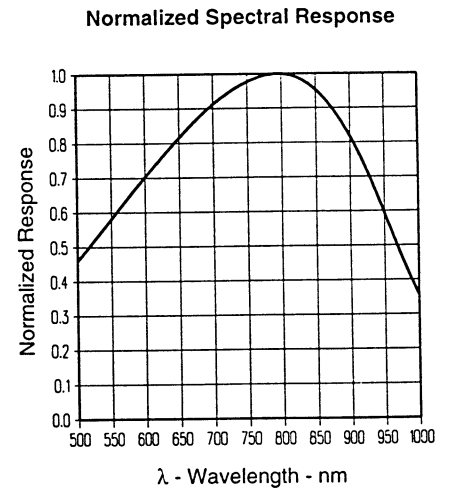
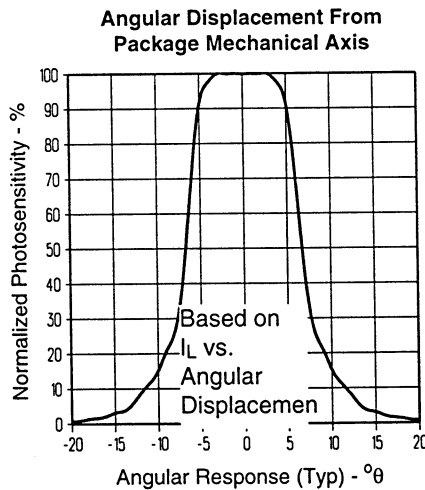
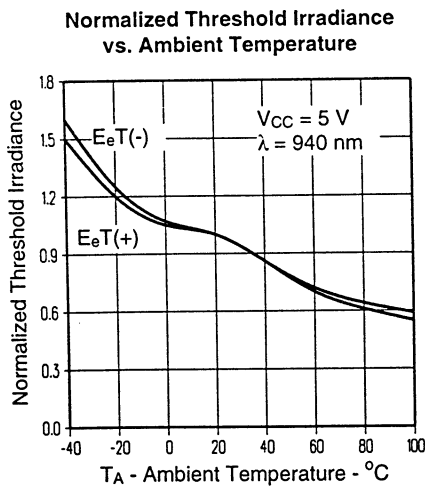
Electrical Characteristics ( $T_A = 25^\circ\text{C}$  unless otherwise noted)

SYMBOL	PARAMETER	MIN	TYP	MAX	UNITS	TEST CONDITIONS
$V_{CC}$	Operating Supply Voltage	4.5		16.0	V	
$E_{eT}(+)$	Positive Going Threshold Irradiance	0.002	0.015	0.035	$\text{mW}/\text{cm}^2$	See Note 3
$E_{e(+)} / E_{e(-)}$	Hysteresis Ratio	1.05	1.20	1.60		See Note 3
$I_{CCH}$	High State Supply Current		5.0	12.0	mA	Note 4
$I_{CCL}$	Low State Supply Current		4.0	12.0	mA	Note 5
$V_{OH}$	High State Output Voltage OPL820 OPL821	$V_{CC}-1.5$		$V_{CC}$	V	$I_{OH} = -100\ \mu\text{A}$ , Note 4
$V_{OL}$	Low State Output Voltage			0.4	V	$I_{OL} = 16\ \text{mA}$ , Note 5
$I_{OH}$	High State Output Current OPL820-OC OPL821-OC			100	$\mu\text{A}$	$V_{OH} = 30\ \text{V}$ , Note 4
$t_r, t_f$	Output Rise Time, Output Fall Time		60		ns	$R_L = 390\ \Omega$
$t_{PLH}$	Propagation Delay Low to High State		1.0		$\mu\text{s}$	$R_L = 390\ \Omega$ , $E_e = 0.1\ \text{mW}/\text{cm}^2$
$t_{PHL}$	Propagation Delay High to Low State		2.1		$\mu\text{s}$	$R_L = 390\ \Omega$ , $E_e = 0.1\ \text{mW}/\text{cm}^2$
Data Rate	Data Rate Using NRZ Format		100		kHz	$R_L = 390\ \Omega$ , $E_e = 0.1\ \text{mW}/\text{cm}^2$

PHOTOLÓGIC  
SENSORS

- (4) High output state limits are valid for  $4.5\ \text{V} < V_{CC} < 16\ \text{V}$  and  $E_e > 0.035\ \text{mW}/\text{cm}^2$  (OPL820, OPL820-OC),  $E_e < 0.001\ \text{mW}/\text{cm}^2$  (OPL821, OPL821-OC).
- (5) Low output state limits are valid for  $4.5\ \text{V} < V_{CC} < 16\ \text{V}$  and  $E_e > 0.035\ \text{mW}/\text{cm}^2$  (OPL821, OPL821-OC),  $E_e < 0.001\ \text{mW}/\text{cm}^2$  (OPL820, OPL820-OC).

## Typical Performance Curves



Optek reserves the right to make changes at any time in order to improve design and to supply the best product possible.

Optek Technology, Inc. 1215 W. Crosby Road Carrollton, Texas 75006 (972)323-2200 Fax (972)323-2396

## Typical Performance Curves

