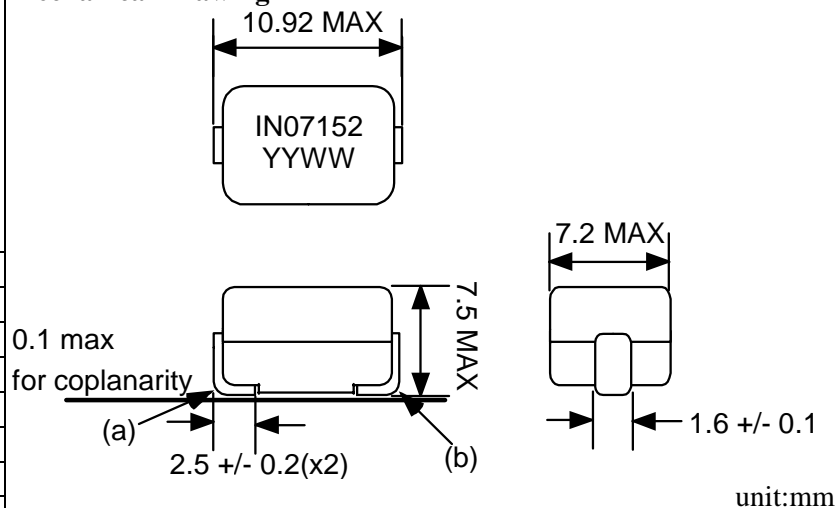


Data Sheet



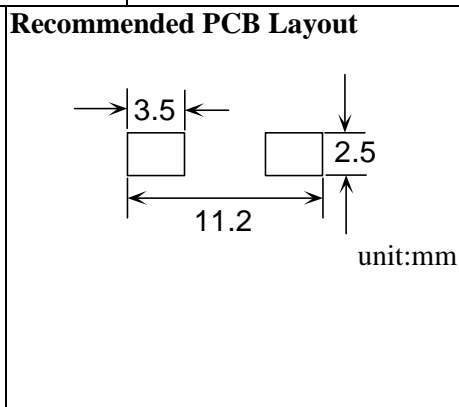
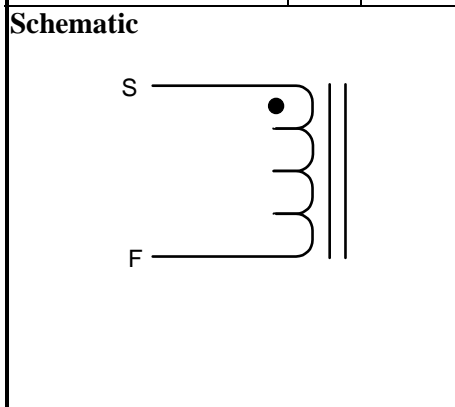
ICE Components, Inc.
 Helping Engineer the Technology of Power
 Tel 678-560-9172 Fax 678-560-9304
 cust.serv@icecomp.com
 www.icecomponents.com
 1165 Allgood Rd., Ste. #20, Marietta, GA 30062

Mechanical Drawing



General Information	
Customer	
Part Number	IN07152
Revision	0
Description	Inductor
Date	AUG-07-2009
Reference	--
Doc Control #	--
Issue(For ICE use only)	--

Specification			Sample Test Data	
Item	Pins	Spec	Test Condition	
Inductance @0Adc	S - F	230 nH +/- 15%	1 MHz, 0.1Vrms, series	
Inductance @Isat at 25degC	S - F	156 nH min	1 MHz, 0.1Vrms, series (41 Adc)	
DCR	S - F	0.29 mOhm +/- 10%	+25 deg C	
Isat at 25degC	S - F	41 Adc max		
Isat at +125degC	S - F	33 Adc max		
Idc	S - F	45 Adc max		



- ### Remark
- Isat is the current at which the inductance drops by 20%.
 - Idc is the current at which the temperature of the part increases by 50 deg C.
 - Inductance vs. Current Curve and Temperature vs. Current Curve as attached.
 - The nominal DCR is measured from point (a) to point (b), as shown on the mechanical drawing.
 - This is RoHS compliant product.
 - The max operating temperature is 130degC (ambient + temperature rise).

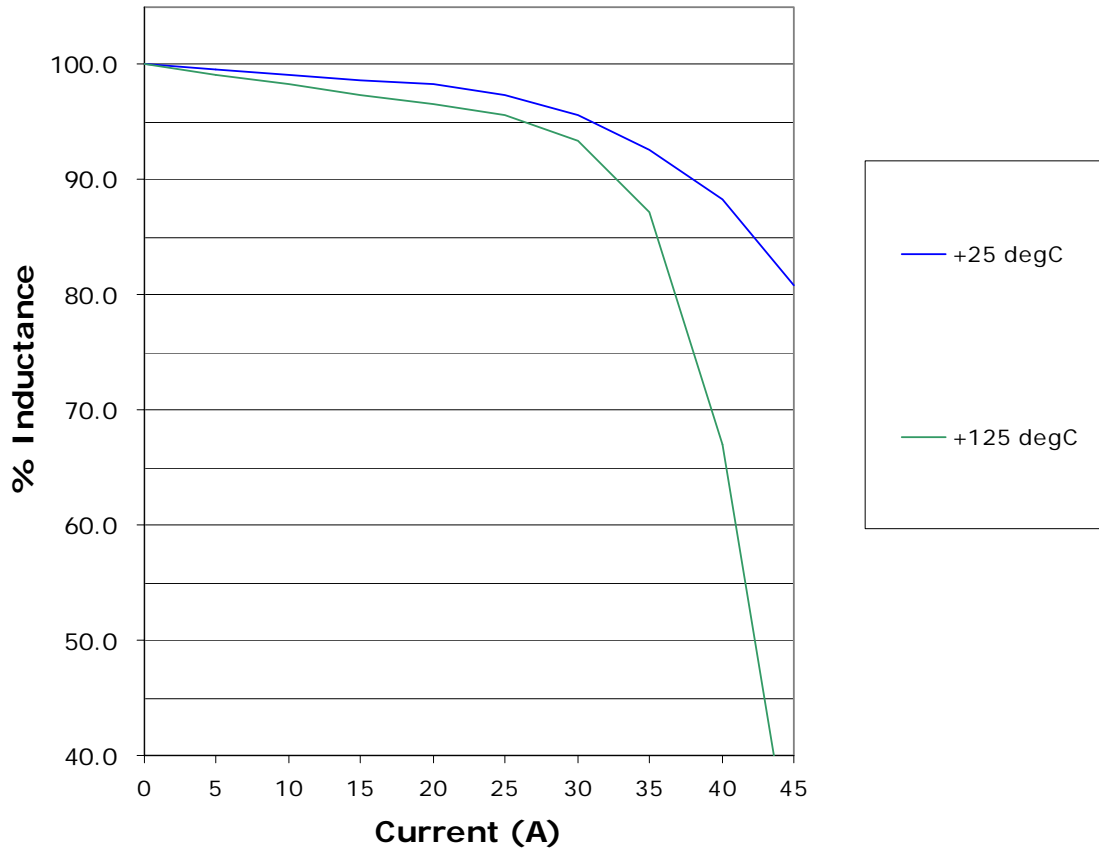
Sample approval is required before release to production. Sample specifications take precedence over customer specifications.

 Customer Signature

Rev.	Description	PRD	CHK	APP	Date	NTFY
0	Initial release	Emily	Gary	L. L. Chou	2009/8/7	2009/8/7

P/N: IN07152

Inductance vs. Current



Temperature VS Current

