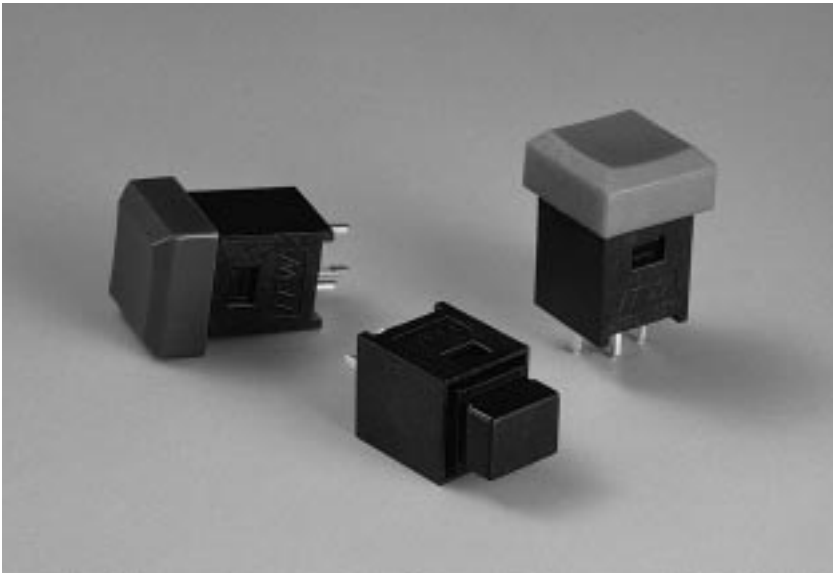


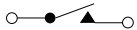
Series 60 – Dataswitch

Typical Applications

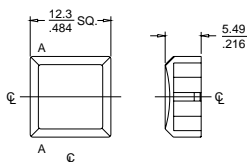
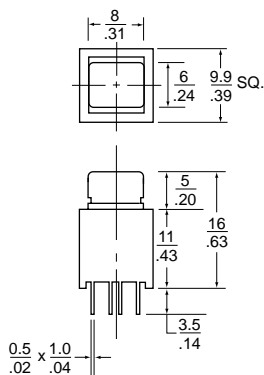
- Telephony equipment
- Computer equipment



actual size



Form A



Button

millimeters
inches

Features

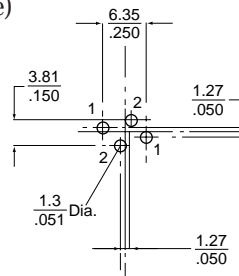
- Designed for data input applications
- PCB terminals
- Switch is .39" square
- Designed for flow soldering and automatic cleaning; solvents must be compatible with "ABS" and glass-loaded "Noryl"
- Applications for instrumentation, telecommunications control and measuring equipment, entertainment equipment, consumer electronics, automotive

Mechanical and Electrical Characteristics

- Mechanical function: Momentary click
- Insulation resistance: 25,000 Mohm
- Contact resistance: 25 mOhm
- Operating temperature: -20°C to +70°C (-4°F to +158°F)
- Bounce time: <2 ms
- Operating force: <1.2N (120 g)
- Operating travel: .7 mm (.03 in.)
- Operating life: 250,000 cycles
- Circuitry: SPST-NO momentary
- Body: Black Noryl glass filled SE1 GFN2
- Button: ABS Black
- Contacts: Brass silver-plated
- Spring: Bronze silver-plated

Mounting Information

PCB Pin Layout
(Component Side)



Ordering Information

Part Number	Description	Color
60-1000	Switch/rectangular button	-
60-4001	Button/Square	Black
60-4002	Button/Square	Red
60-4003	Button/Square	Green
60-4004	Button/Square	Light Grey

Electrical Characteristics

Circuitry	Current	Voltage
SPST-NO	20mA	35 VDC