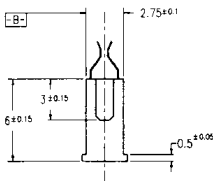
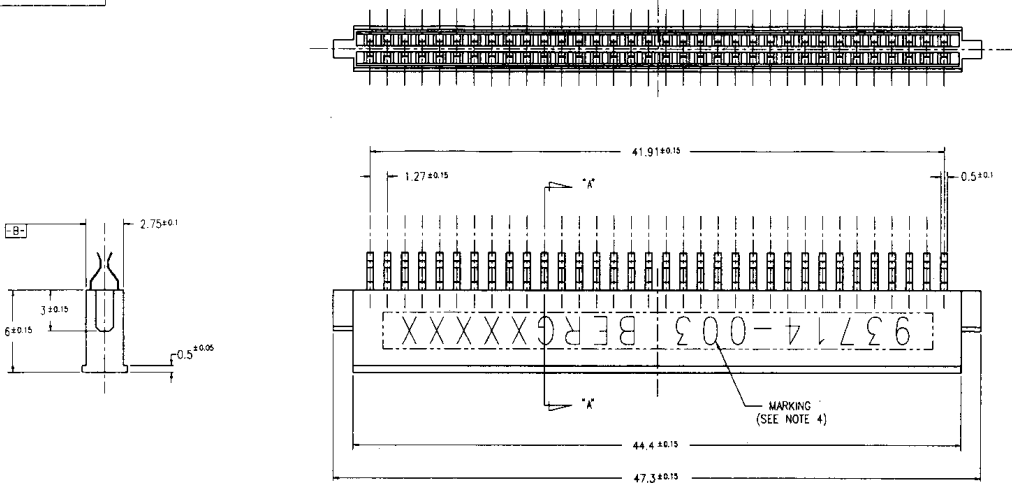
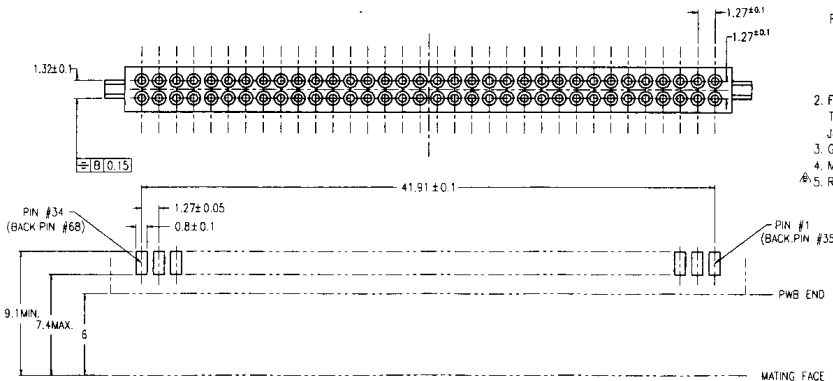
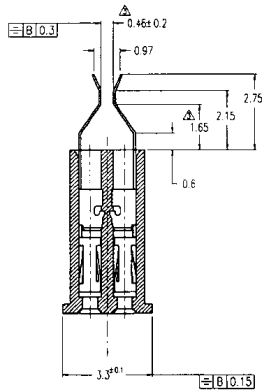


PRODUCT No.	HOUSING COLOR
93714-003	BLACK

REVISIONS				
REV.	DESCRIPTION	ECN	BY	DATE
1	SKETCHED		KS	7/2/93
2	REVISED		HS	7/1/93
3	REVISED		KS	7/29/93
4	ADDED MARKING		HS	7/27/93
7	RELEASED	J30308	KS	8/28/93
8	REVISED	J50265	KS	10/19/98



- NOTE
- MATERIAL  
CONTACT : BeCu 0.081  
HSG. : LCP UL94V-0  
FINISH (PLATING)  
CONTACT : ALL OVER ----- Ni UNDER 0.5µm THK. MIN.  
SELECTIVE ----- Au PLATING 0.1µm THK. MIN.  
OVER Pd-Ni PLATING.  
SOLDER TAIL ----- TIN LEAD 2.5µm THK. MIN.
  - FOR MATING MALE CONN.(HDR./EJECTOR HDR.)  
TO APPLY 68 POS. MALE CONN.(HDR./EJECTOR HDR.) BASED ON  
JEIDA AND PCMCIA SPECIFICATION
  - GENERAL TOLERANCE : ±0.25
  - MARKING "93714-003 BERG XXXXX" (XXXXX:LOT No.)
  - RECOMMENDED PWB THICKNESS : 0.41 TO 0.61



△ RECOMMENDED PWB FOOTPRINT LAYOUT

SHEET INDEX		ISSUE SH NO.		DATE		CUSTOMER COPY			
TOLERANCES UNLESS OTHERWISE SPECIFIED		MAN	ENGR	CHK	APPD	DATE	UNIT	SCALE	SIZE
SEE NOTE 3		SEE NOTE 1	SEE NOTE 1	SEE NOTE 1	SEE NOTE 1	10/19/98	MM	5/1	C
LINEAR		FINISH	UNIT	DATE	DATE	1998/7/1	MM	5/1	C
ANGLES		SEE NOTE 1	DATE	DATE	DATE	10/19/98	MM	5/1	C

JEIDA/PCMCIA 68POS. RECEPTACLE

93714 B 10r1

Printed: Feb 06, 2008 (SK29068)

PDM: Rev.B STATUS: Released

09-003A REV. C  
DO NOT SCALE PRINT THIS INFORMATION IS CONFIDENTIAL AND IS DISCLOSED TO YOU ON CONDITION THAT NO FURTHER DISCLOSURE IS MADE BY YOU TO OTHER THAN BERG PERSONNEL WITHOUT WRITTEN AUTHORIZATION FROM BERG ELECTRONICS JAPAN K.K.