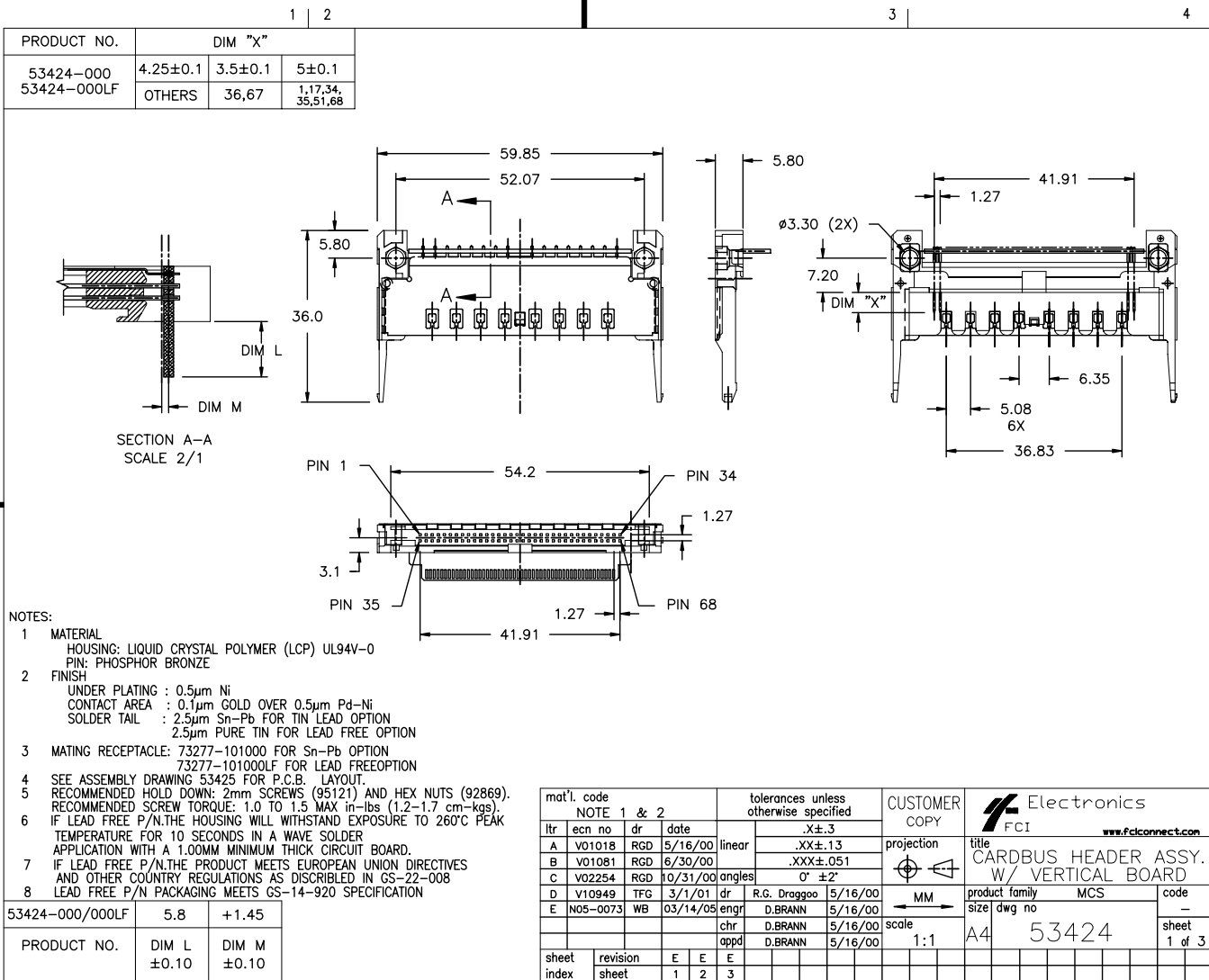


Tous droits strictement réservés. Reproduction ou communication à des tiers interdite sous quelque forme que ce soit sans autorisation écrite du propriétaire. Propriété de c FCI. Droits de reproduction FCI.

All rights strictly reserved. Reproduction or issue to third parties in any form whatever is not permitted without written authority from the proprietor. Property of FCI. Copyright FCI.



NOTES:

- MATERIAL
HOUSING: LIQUID CRYSTAL POLYMER (LCP) UL94V-0
PIN: PHOSPHOR BRONZE
- FINISH
UNDER PLATING : 0.5µm Ni
CONTACT AREA : 0.1µm GOLD OVER 0.5µm Pd-Ni
SOLDER TAIL : 2.5µm Sn-Pb FOR TIN LEAD OPTION
2.5µm PURE TIN FOR LEAD FREE OPTION
- MATING RECEPTACLE: 73277-101000 FOR Sn-Pb OPTION
73277-101000LF FOR LEAD FREE OPTION
- SEE ASSEMBLY DRAWING 53425 FOR P.C.B. LAYOUT.
- RECOMMENDED HOLD DOWN: 2mm SCREWS (95121) AND HEX NUTS (92869).
RECOMMENDED SCREW TORQUE: 1.0 TO 1.5 MAX in-lbs (1.2-1.7 cm-kgs).
- IF LEAD FREE P/N THE HOUSING WILL WITHSTAND EXPOSURE TO 260°C PEAK TEMPERATURE FOR 10 SECONDS IN A WAVE SOLDER APPLICATION WITH A 1.00MM MINIMUM THICK CIRCUIT BOARD.
- IF LEAD FREE P/N THE PRODUCT MEETS EUROPEAN UNION DIRECTIVES AND OTHER COUNTRY REGULATIONS AS DESCRIBED IN GS-22-008
- LEAD FREE P/N PACKAGING MEETS GS-14-920 SPECIFICATION

| | | |
|-----------------|----------------|----------------|
| 53424-000/000LF | 5.8 | +1.45 |
| PRODUCT NO. | DIM L ±0.10 | DIM M ±0.10 |

| | | | | | | | |
|-------------|----------|---------------------------------------|----------|-----------------|---------|---|--------|
| mat'l. code | | tolerances unless otherwise specified | | CUSTOMER COPY | | Electronics FCI www.fciconnect.com | |
| NOTE 1 & 2 | | | | projection | | title | |
| ltr | ecn no | dr | date | linear | MM | CARDBUS HEADER ASSY. W/ VERTICAL BOARD | |
| A | V01018 | RGD | 5/16/00 | .XX±.13 | 1:1 | product family | MCS |
| B | V01081 | RGD | 6/30/00 | .XXX±.051 | | size | dwg no |
| C | V02254 | RGD | 10/31/00 | 0° ±2' | | 53424 | |
| D | V10949 | TFG | 3/1/01 | dr R.G. Draggoo | 5/16/00 | code | - |
| E | N05-0073 | WB | 03/14/05 | enrg D.BRANN | 5/16/00 | sheet | 1 of 3 |
| | | | | chr D.BRANN | 5/16/00 | | |
| | | | | appd D.BRANN | 5/16/00 | | |
| sheet | revision | E | E | E | | cage code | |
| index | sheet | 1 | 2 | 3 | | | |

ACAD

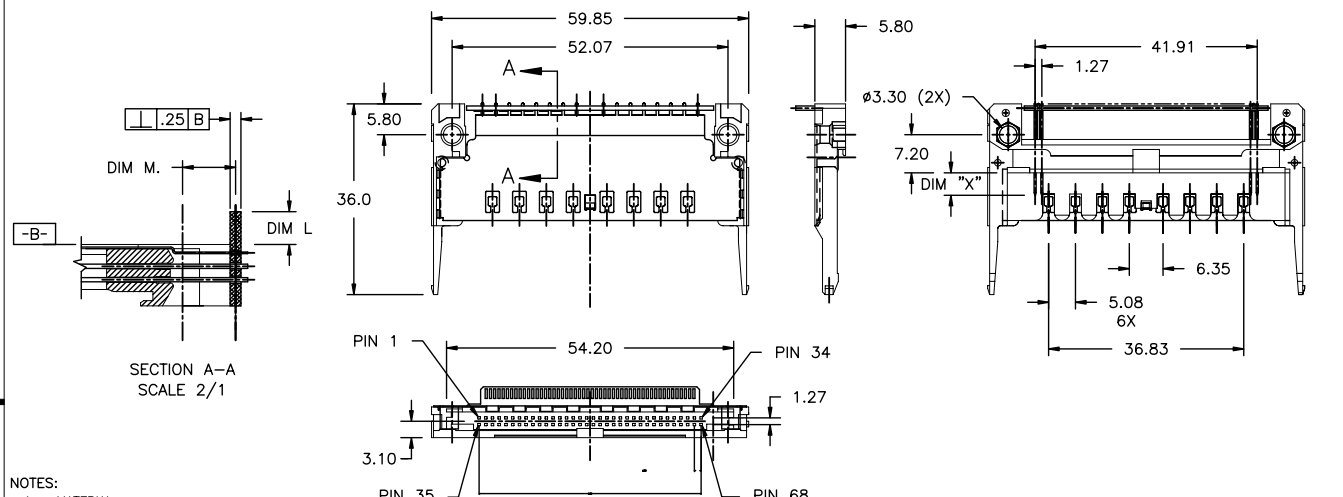
PDM: Rev:E

STATUS Released 2.6 Printed: Oct 12, 2010

Tous droits strictement réservés. Reproduction ou communication a des tiers
interdite sous quelque forme que ce soit sans autorisation écrite du propriétaire.
Propriété de c FCI. Droits de reproduction FCI.

All rights strictly reserved. Reproduction or issue to third parties in any
form whatever is not permitted without written authority from the proprietor.
Property of FCI. Copyright FCI.

| PRODUCT NO. | DIM "X" | | |
|-------------|-----------|----------|----------------------|
| | 53424-500 | 4.25±0.1 | 3.5±0.1 |
| 53424-500LF | OTHERS | 36,67 | 1,17,34, 35,51,68 |



- NOTES:
- MATERIAL
HOUSING: LIQUID CRYSTAL POLYMER (LCP) UL94V-0
PIN: PHOSPHOR BRONZE
 - FINISH
UNDER PLATING : 0.5µm Ni
CONTACT AREA : 0.1µm GOLD OVER 0.5µm Pd-Ni
SOLDER TAIL : 2.5µm Sn-Pb FOR TIN LEAD OPTION
2.5µm PURE TIN FOR LEAD FREE OPTION
 - MATING RECEPTACLE: 73277-101000 FOR TIN LEAD OPTION
73277-101000LF FOR LEAD FREE OPTION
 - SEE ASSEMBLY DRAWING 53425 FOR P.C.B. LAYOUT.
 - RECOMMENDED HOLD DOWN: 2mm SCREWS (95121) AND HEX NUTS (92869).
RECOMMENDED SCREW TORQUE: 1.0 TO 1.5 MAX in-lbs (1.2-1.7 cm-kgs).
 - IF LEAD FREE P/N.THE HOUSING WILL WITHSTAND EXPOSURE TO 260°C PEAK
TEMPERATURE FOR 10 SECONDS IN A WAVE SOLDER
APPLICATION WITH A 1.00MM MINIMUM THICK CIRCUIT BOARD.
 - IF LEAD FREE P/N.THE PRODUCT MEETS EUROPEAN UNION DIRECTIVES
AND OTHER COUNTRY REGULATIONS AS DISCRIBLED IN GS-22-008
 - LEAD FREE P/N PACKAGING MEETS GS-14-920 SPECIFICATION

| | | |
|-----------------|----------------|----------------|
| 53424-500/500LF | 4.6 | +5.00 |
| PRODUCT NO. | DIM L ±0.10 | DIM M ±0.10 |

| mat'l. code | | tolerances unless otherwise specified | | CUSTOMER COPY | | Electronics FCI www.fciconnect.com | |
|-------------|----------|---------------------------------------|------|---------------|---------------------|---|--|
| ltr | ecn no | dr | date | linear | .XX±.13 | projection | title |
| E | | | | angles | .XXX±.051 | 1:1 | CARBUS HEADER ASSY. W/ VERTICAL BOARD |
| | | | | dr | R.G. Dragoo 6/30/00 | MM | product family |
| | | | | engr | D.BRANN 6/30/00 | 1:1 | MCS |
| | | | | chr | D.BRANN 6/30/00 | 1:1 | size |
| | | | | appd | D.BRANN 6/30/00 | 1:1 | dwg no |
| sheet | revision | | | | | | code |
| index | sheet | | | | | | 2 of |
| | | | | | | | 53424 |
| | | | | | | | 2 of |

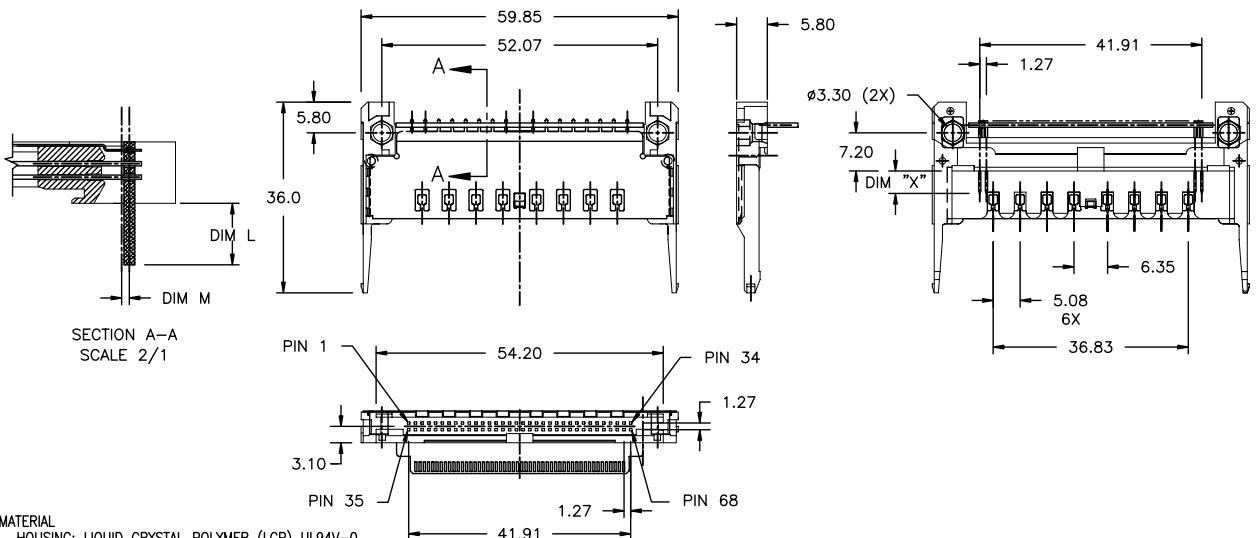
1 | 2 | 3 | 4

1 | 2 | 3 | 4

Tous droits strictement réservés. Reproduction ou communication a des tiers interdite sous quelque forme que ce soit sans autorisation écrite du propriétaire. Propriété de c FCI. Droits de reproduction FCI.

All rights strictly reserved. Reproduction or issue to third parties in any form whatever is not permitted without written authority from the proprietor. Property of FCI. Copyright FCI.

| PRODUCT NO. | DIM "X" | | |
|-------------|-----------|----------|----------------------|
| | 53424-067 | 4.25±0.1 | 3.5±0.1 |
| 53424-067LF | OTHERS | 36,67 | 1,17,34, 35,51,68 |



NOTES:

- MATERIAL
HOUSING: LIQUID CRYSTAL POLYMER (LCP) UL94V-0
PIN: PHOSPHOR BRONZE
- FINISH
UNDER PLATING : 0.5µm Ni
CONTACT AREA : 0.1µm GOLD OVER 0.5µm Pd-Ni
SOLDER TAIL : 2.5µm Sn-Pb FOR TIN LEAD OPTION
2.5µm PURE TIN FOR LEAD FREE OPTION
- MATING RECEPTACLE: 73277-101000 FOR TIN LEAD OPTION
73277-101000LF FOR LEAD FREE OPTION
- SEE ASSEMBLY DRAWING 53425 FOR P.C.B. LAYOUT.
- RECOMMENDED HOLD DOWN: 2mm SCREWS (95121) AND HEX NUTS (92869).
RECOMMENDED SCREW TORQUE: 1.0 TO 1.5 MAX in-lbs (1.2-1.7 cm-kgs).
- IF LEAD FREE P/N.THE HOUSING WILL WITHSTAND EXPOSURE TO 260°C PEAK TEMPERATURE FOR 10 SECONDS IN A WAVE SOLDER APPLICATION WITH A 1.00MM MINIMUM THICK CIRCUIT BOARD.
- IF LEAD FREE P/N.THE PRODUCT MEETS EUROPEAN UNION DIRECTIVES AND OTHER COUNTRY REGULATIONS AS DISCRIBED IN GS-22-008
- LEAD FREE P/N PACKAGING MEETS GS-14-920 SPECIFICATION

| | | |
|-----------------|----------------|----------------|
| 53424-067/067LF | 5.3 | +1.45 |
| PRODUCT NO. | DIM L ±0.10 | DIM M ±0.10 |

| mat'l. code | | tolerances unless otherwise specified | | CUSTOMER COPY | | FCI Electronics | |
|-------------|----------|---------------------------------------|------|---------------|--------------|---|----------------|
| NOTE 1 & 2 | | | | projection | | title | |
| ltr | ecn no | dr | date | linear | MM | www.fciconnect.com | |
| E | | | | angles | 1:1 | CARDBUS HEADER ASSY. W/ VERTICAL BOARD | |
| | | | | dr | R.G. Draggoo | 5/16/00 | product family |
| | | | | enrg | D.BRANN | 5/16/00 | MCS |
| | | | | chr | D.BRANN | 5/16/00 | size |
| | | | | appd | D.BRANN | 5/16/00 | dwg no |
| sheet | revision | | | | | | code |
| index | sheet | | | | | | 3 of |
| | | | | | | | sheet |
| | | | | | | | 3 of |

ACAD

PDM: Rev:E

STATUS Released 2.6 Printed: Oct 12, 2014