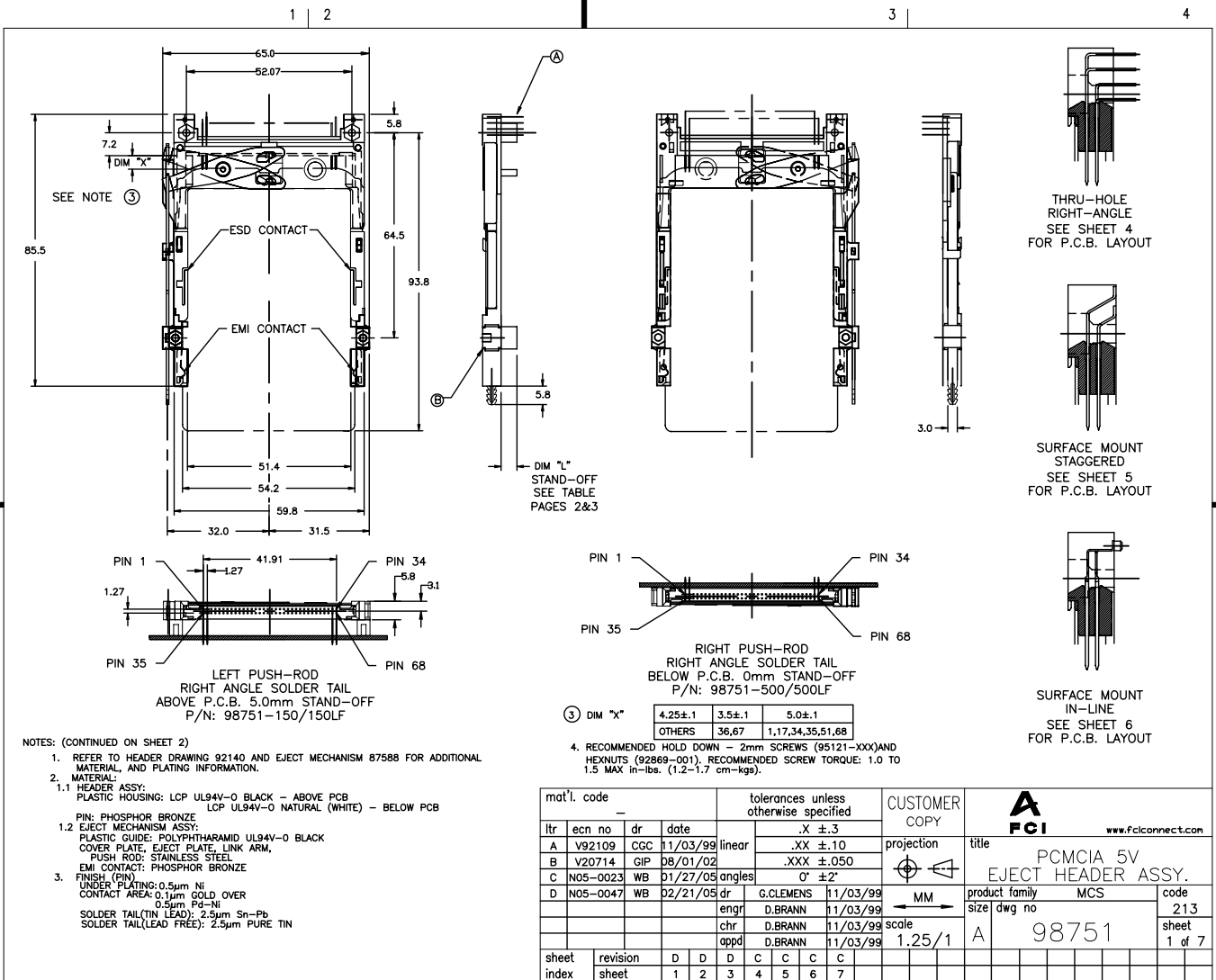


Tous droits strictement réservés. Reproduction ou communication à des tiers
interdite sous quelque forme que ce soit sans autorisation écrite du propriétaire.
Propriété de c FCI. Droits de reproduction FCI.

All rights strictly reserved. Reproduction or issue to third parties in any
form whatever is not permitted without written authority from the Proprietor.
Property of FCI. Copyright FCI.

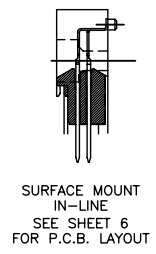
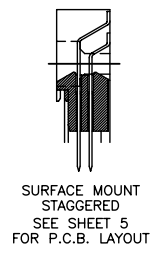
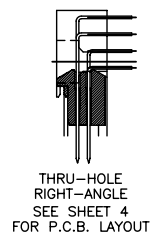


NOTES: (CONTINUED ON SHEET 2)

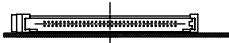
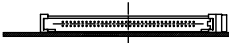


- REFER TO HEADER DRAWING 92140 AND EJECT MECHANISM 87588 FOR ADDITIONAL MATERIAL, AND PLATING INFORMATION.
- MATERIAL:
 - 1.1 HEADER ASSY:
PLASTIC HOUSING: LCP UL94V-0 BLACK - ABOVE PCB
LCP UL94V-0 NATURAL (WHITE) - BELOW PCB
 - 1.2 EJECT MECHANISM ASSY:
PLASTIC GUIDE: POLYPHTHAMID UL94V-0 BLACK
COVER PLATE, EJECT PLATE, LINK ARM,
PUSH ROD: STAINLESS STEEL
EMI CONTACT: PHOSPHOR BRONZE
- FINISH (FIN)
UNDER PLATING: 0.5µm Ni
CONTACT AREA: 0.1µm GOLD OVER
0.5µm Pd-Ni
SOLDER TAIL(TIN LEAD): 2.5µm Sn-Pb
SOLDER TAIL(LEAD FREE): 2.5µm PURE TIN

- RECOMMENDED HOLD DOWN - 2mm SCREWS (95121-XXX)AND
HEXNUTS (92869-001). RECOMMENDED SCREW TORQUE: 1.0 TO
1.5 MAX in-lbs. (1.2-1.7 cm-kgs).

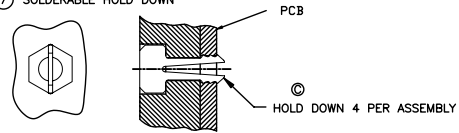
| | | | | | | | |
|-------------|----------|---------------------------------------|----------|------------------------|------------|---------------------------------|--------|
| mat'l. code | | tolerances unless otherwise specified | | CUSTOMER COPY | | www.fciconnect.com | |
| ltr | ecn no | dr | date | linear | projection | title | |
| A | V92109 | CGC | 11/03/99 | .X ±.3 | MM | PCMCIA 5V EJECT HEADER ASSY. | |
| B | V20714 | GIP | 08/01/02 | .XX ±.10 .XXX ±.050 | | product family | code |
| C | N05-0023 | WB | 01/27/09 | angles | scale | size | dwg no |
| D | N05-0047 | WB | 02/21/09 | dr | 1.25/1 | A | 98751 |
| | | | | engr | | | |
| | | | | chr | | | |
| | | | | appd | | | |
| sheet | revision | D | D | D | C | C | C |
| index | sheet | 1 | 2 | 3 | 4 | 5 | 6 |


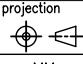
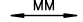


DESCRIPTION: ABOVE P.C.B., DECK AND PUSH-ROD LOCATION ARE AS VIEWED BY USER.

| PRODUCT NO. 98751-XXXX | PUSH ROD LOCATION | SOLDER TAIL ⑤ | STAND-OFF HEIGHT DIM "L" | EJ. HEADER ASSY 92140-XXX ⑥ | EJ. MECHANISM ASSY 87588-XXX ⑦ | SOLDERABLE HOLD DOWN (4) ⑧ | MOUNTING STYLE TO PCB AND PUSH-ROD LOCATION | USED WITH/COMMENTS |
|---------------------------|----------------------|---------------------|--------------------------------|--------------------------------------|---|----------------------------------|---|--------------------|
| 000 | RIGHT | R/A | 0.0 | 000 | 000 | | | |
| 000H ⑩ | RIGHT | R/A | 0.0 | 000 | 000 | 93925-001 | | |
| 001 | RIGHT | SMT-STG | 0.0 | 001 | 000 | | | |
| 002 | RIGHT | SMT-IL | 0.0 | 002 | 000 | | | |
| 050 | RIGHT | R/A | 5.0 | 020 | 005 | |  | |
| 050H ⑩ | RIGHT | R/A | 5.0 | 020 | 005 | 93925-004 | | |
| 005 | RIGHT | R/A | 0.0 | 005 | 000 | | | 98751-000 or -100 |
| 100 | LEFT | R/A | 0.0 | 000 | 001 | | | |
| 100H ⑩ | LEFT | R/A | 0.0 | 000 | 001 | 93925-001 | | |
| 101 | LEFT | SMT-STG | 0.0 | 001 | 001 | | | |
| 102 | LEFT | SMT-IL | 0.0 | 002 | 001 | |  | |
| 150 | LEFT | R/A | 5.0 | 020 | 005 | | | |
| 105 | LEFT | R/A | 0.0 | 005 | 001 | | | 98751-000 or -100 |
| 500 | RIGHT | R/A | 0.0 | 500 | 001 | | | |
| 500H | RIGHT | R/A | 0.0 | 500 | 001 | 93925-001 ⑩ | | |
| 501 | RIGHT | SMT-STG | 0.0 | 501 | 001 | | | |
| 502 | RIGHT | SMT-IL | 0.0 | 502 | 001 | |  | |
| 503 | RIGHT | SMT-IL | 0.0 | 503 | 001 | | | NO BOARD LOCATORS |
| 550 | RIGHT | R/A | 5.0 | 520 | 007 | | | |
| 505 | RIGHT | R/A | 0.0 | 505 | 001 | | | 98751-500 or -600 |
| 600 | LEFT | R/A | 0.0 | 500 | 000 | | | |
| 600H | LEFT | R/A | 0.0 | 500 | 000 | 93925-001 ⑩ | | |
| 601 | LEFT | SMT-STG | 0.0 | 501 | 000 | | | |
| 602 | LEFT | SMT-IL | 0.0 | 502 | 000 | | | |
| 650 | LEFT | R/A | 5.0 | 520 | 005 | |  | |
| 605 | LEFT | R/A | 0.0 | 505 | 000 | | | 98751-500 or -600 |

- NOTES: (CONTINUED FROM SHEET 1)
 ⑤ SOLDER TAIL KEY/PCB LAYOUT:
 R/A = RIGHT ANGLE PIN-THROUGH-HOLE-PAGE 4
 SMT-STG = STAGGERED SURFACE MOUNT-PAGE 5
 SMT-IL = SURFACE MOUNT IN-LINE (SINGLE ROW)-PAGE 6
 6. BOARD KEEP OUT ZONE- PAGE 7
 ⑦ SOLDERABLE HOLD DOWN



| | | | | | | | |
|-------------|----------|---------------------------------------|------|---------------|------------|---|---------------------------------|
| mat'l. code | | tolerances unless otherwise specified | | CUSTOMER COPY | |  www.Fciconnect.com | |
| ltr | ecn no | dr | date | linear | .X ±.3 | projection | title |
| d | | | | angles | .XX ±.10 |  | PCMCIA 5V EJECT HEADER ASSY. |
| | | | | dr | .XXX ±.050 | MM | product family |
| | | | | enrg | 0' ±2' |  | MCS |
| | | | | chr | | 1:1 | size |
| | | | | appd | | | dwg no |
| sheet | revision | | | | | | 98751 |
| index | sheet | | | | | | code |
| | | | | | | | 213 |
| | | | | | | | sheet |
| | | | | | | | 2 of |

Tous droits strictement reserves. Reproduction ou communication a des tiers
 interdite sous quelque forme que ce soit sans autorisation ecrite du proprietaire.
 Property of FCI. Copyright FCI.

All rights strictly reserved. Reproduction or issue to third parties in any
 form whatever is not permitted without written authority from the proprietor.
 Property of FCI. Copyright FCI.

DESCRIPTION: ABOVE P.C.B., DECK AND PUSH-ROD LOCATION ARE AS VIEWED BY USER.

| PRODUCT NO. 98751-XXXX | PUSH ROD LOCATION | SOLDER TAIL Ⓢ | STAND-OFF HEIGHT DIM "L" | EJ. HEADER ASSY 92140-XXX Ⓐ | EJ. MECHANISM ASSY 87588-XXX Ⓑ | SOLDERABLE HOLD DOWN (4) Ⓒ | MOUNTING STYLE TO PCB AND PUSH-ROD LOCATION | USED WITH/COMMENTS |
|---------------------------|----------------------|---------------------|--------------------------------|--------------------------------------|---|----------------------------------|---|--------------------|
| 000LF | RIGHT | R/A | 0.0 | 000LF | 000 | | | |
| 000HLF Ⓣ | RIGHT | R/A | 0.0 | 000LF | 000 | 93925-001 | | |
| 050LF | RIGHT | R/A | 5.0 | 020LF | 005 | | | |
| 050HLF Ⓣ | RIGHT | R/A | 5.0 | 020LF | 005 | 93925-004 | | |
| 005LF | RIGHT | R/A | 0.0 | 005LF | 000 | | | 98751-000 or -100 |
| 100LF | LEFT | R/A | 0.0 | 000LF | 001 | | | |
| 100HLF Ⓣ | LEFT | R/A | 0.0 | 000LF | 001 | 93925-001 | | |
| 150LF | LEFT | R/A | 5.0 | 020LF | 005 | | | |
| 105LF | LEFT | R/A | 0.0 | 005LF | 001 | | | 98751-000 or -100 |
| 500LF | RIGHT | R/A | 0.0 | 500LF | 001 | | | |
| 500HLF | RIGHT | R/A | 0.0 | 500LF | 001 | 93925-001 Ⓣ | | |
| 550LF | RIGHT | R/A | 5.0 | 520LF | 007 | | | |
| 505LF | RIGHT | R/A | 0.0 | 505LF | 001 | | | 98751-500 or -600 |
| 600LF | LEFT | R/A | 0.0 | 500LF | 000 | | | |
| 600HLF | LEFT | R/A | 0.0 | 500LF | 000 | 93925-001 Ⓣ | | |
| 650LF | LEFT | R/A | 5.0 | 520LF | 005 | | | |
| 605LF | LEFT | R/A | 0.0 | 505LF | 000 | | | 98751-500 or -600 |

NOTES: (CONTINUED FROM SHEET 2)

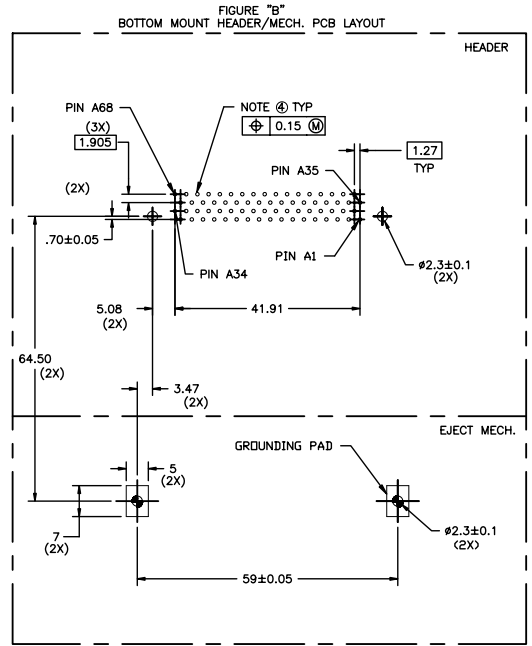
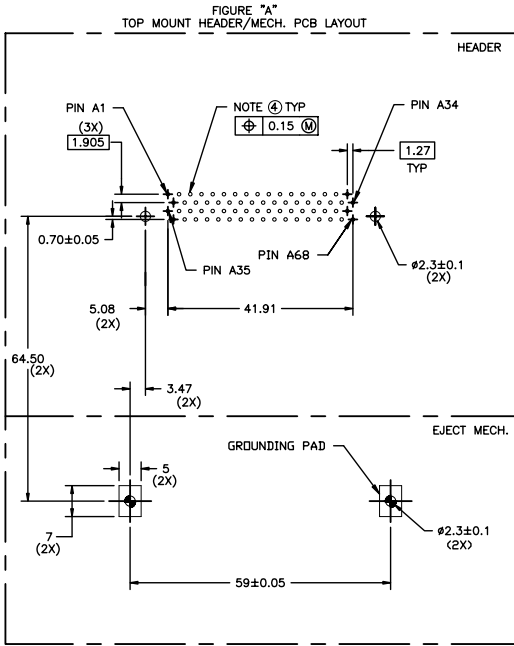
- IF LEAD FREE P/N, THE HOUSING WILL WITHSTAND EXPOSURE TO 260°C PEAK TEMPERATURE
SOLDER TAIL : SMT-IL, SMT-STG CAN RESIST 40 SECONDS IN A CONVECTION,
INFRA-RED OR VAPOR PHASE REFLOW OVEN.
SOLDER TAIL : R/A CAN RESIST 10 SECONDS IN A WAVE SOLDER APPLICATION
WITH A 1.00MM MINIMUM THICK CIRCUIT BOARD.
- IF LEAD FREE P/N, THE PRODUCT MEETS EUROPEAN UNION DIRECTIVES
AND OTHER COUNTRY REGULATIONS AS DESCRIBED IN GS-22-008
- IF LEAD FREE P/N, PACKAGING MEETS GS-14-920 SPECIFICATION

| | | | | | | | |
|-------------|----------|---------------------------------------|------|---------------|--------------------|--------------------|--------------------|
| mat'l. code | | tolerances unless otherwise specified | | CUSTOMER COPY | | www.Fciconnect.com | |
| ltr | ecn no | dr | date | linear | .X ±.3 | projection | title |
| d | | | | | .XX ±.10 | | PCMCIA 5V |
| | | | | angles | .XXX ±.050 | | EJECT HEADER ASSY. |
| | | | | dr | 0° ±2' | MM | product family |
| | | | | enrg | G.CLEMENS 11/03/99 | ← | MCS |
| | | | | chr | D.BRANN 11/03/99 | → | size |
| | | | | appd | D.BRANN 11/03/99 | 1:1 | dwg no |
| sheet | revision | | | | | | 98751 |
| index | sheet | | | | | | code 213 |
| | | | | | | | sheet 3 of |

Tous droits strictement reserves. Reproduction ou communication a des tiers
 interdite sous quelque forme que ce soit sans autorisation ecrite du proprietaire.
 Property of FCI. Copyright FCI.

All rights strictly reserved. Reproduction or issue to third parties in any
 form whatever is not permitted without written authority from the proprietor.
 Property of FCI. Copyright FCI.

Single Mount Right Angle



NOTES:

- 1 ALL TOLERANCES ±0.15 UNLESS NOTED.
- 2 KEEP-OUT ZONE FOR HEADERS W/STAND-OFF OPTIONS SEE SHEET 7 FIGURE A.
- 3 KEEP-OUT ZONE FOR HEADERS W/O STAND-OFF OPTIONS SEE SHEET 7 FIGURE B.
- ④ RECOMMENDED DIAMETER IS #1.0. FOR PROCESSES USING PASTE REFLOW, HOLE MAY BE AS SMALL AS #0.79

| | | | | | | | |
|-------------|----------------|---------------------------------------|------|---------------|-------------------|------------------------|---------------------------------|
| mat'l. code | | tolerances unless otherwise specified | | CUSTOMER COPY | | www.Fciconnect.com | |
| ltr | ecn no | dr | date | linear | .X ±.3 | projection | title |
| c | | | | | .XX ±.10 | | PCMCIA 5V EJECT HEADER ASSY. |
| | | | | angles | .XXX ±.050 | | product family MCS |
| | | | | dr | 0° ±2' | MM | size dwg no |
| | | | | engr | G.PETERS 08/01/02 | 1:1 | code 213 |
| | | | | chr | D.BRANN 08/01/02 | | sheet 4 of |
| | | | | appd | G.PETERS 08/01/02 | | |
| sheet index | revision sheet | | | | | | cage code 98751 |

ACAD

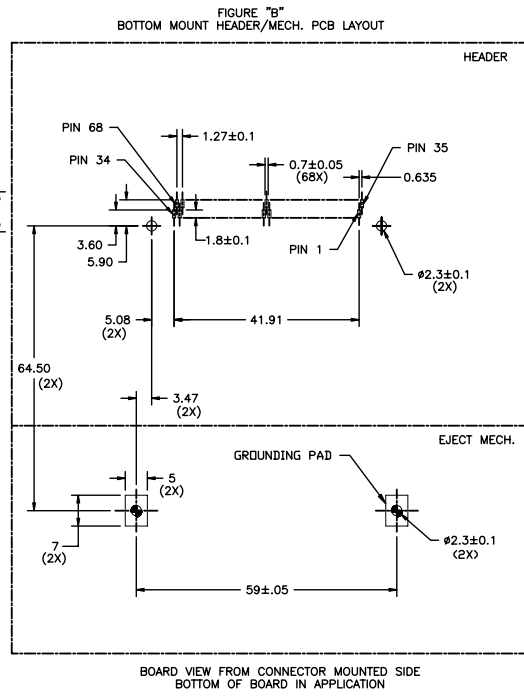
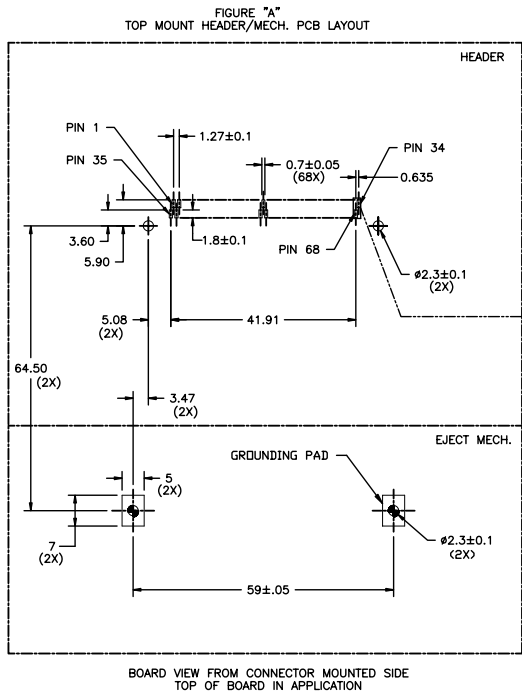
PDM: Rev:D

STATUS Released 2.6 Printed: Oct 12, 2014

Tous droits strictement réservés. Reproduction ou communication à des tiers interdite sous quelque forme que ce soit sans autorisation écrite du propriétaire. Propriété de FCI. Droits de reproduction FCI.

All rights strictly reserved. Reproduction or issue to third parties in any form whatever is not permitted without written authority from the proprietor. Property of FCI. Copyright FCI.

Surface Mount 2-Row



BOARD VIEW FROM CONNECTOR MOUNTED SIDE
TOP OF BOARD IN APPLICATION

BOARD VIEW FROM CONNECTOR MOUNTED SIDE
BOTTOM OF BOARD IN APPLICATION

- NOTES:
- 1 ALL TOLERANCES ±0.15 UNLESS NOTED.
 - 2 KEEP-OUT ZONE FOR ASSEMBLIES SHOWN ON SHEET 7 FIGURE B.

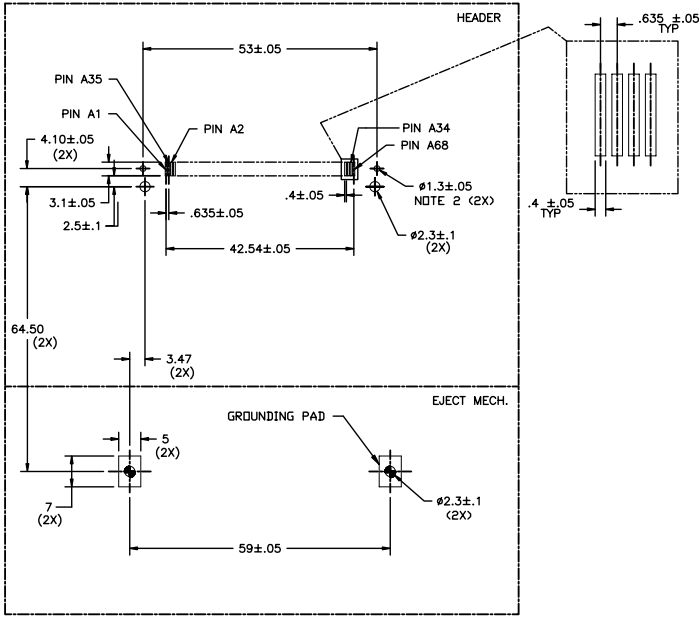
| | | | | | | | |
|-------------|----------------|---------------------------------------|------|---------------|-------------------|------------------------|-----------------------------------|
| mat'l. code | | tolerances unless otherwise specified | | CUSTOMER COPY | | www.Fciconnect.com | |
| ltr | ecn no | dr | date | linear | .X ±.3 | projection | title |
| c | | | | | .XX ±.10 | MM | PCMCIA 5V EJECTOR HEADER ASSY. |
| | | | | angles | .XXX ±.050 | | product family |
| | | | | dr | 0° ±2° | size | MCS |
| | | | | enrg | | dwg no | 213 |
| | | | | chr | G.PETERS 08/01/02 | scale | 98751 |
| | | | | appd | D.BRANN 08/01/02 | 1:1 | 5 of |
| sheet index | revision sheet | | | | | | |

All rights strictly reserved. Reproduction or issue to third parties in any form whatever is not permitted without written authority from the proprietor. Property of FCI. Copyright FCI.

Tous droits strictement réservés. Reproduction ou communication à des tiers intervenue sous quelque forme que ce soit sans autorisation écrite du propriétaire. Propriété de c FCI. Droits de reproduction FCI.

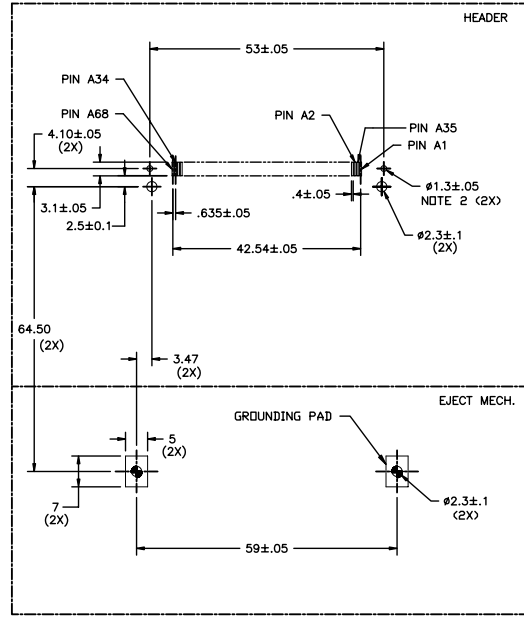
Surface Mount In-Line

FIGURE "A"
TOP MOUNT HEADER/MECH. PCB LAYOUT



BOARD VIEW FROM CONNECTOR MOUNTED SIDE
TOP OF BOARD IN APPLICATION

FIGURE "B"
BOTTOM MOUNT HEADER/MECH. PCB LAYOUT



BOARD VIEW FROM CONNECTOR MOUNTED SIDE
BOTTOM OF BOARD IN APPLICATION

NOTES:

- 1 ALL TOLERANCES ±.15 UNLESS NOTED.
- 2 THIS HOLE REQUIRED FOR HEADERS WITH BOARD LOCATOR.
- 3 KEEP-OUT ZONE FOR ASSEMBLIES SHOWN ON SHEET 7 FIGURE B.

| | | | | | | | |
|-------------|----------|---------------------------------------|------|---------------|-------------------|------------------------|---------------------------------|
| mat'l. code | | tolerances unless otherwise specified | | CUSTOMER COPY | | www.Fciconnect.com | |
| ltr | ecn no | dr | date | linear | .X ±.3 | projection | title |
| c | | | | | .XX ±.10 | MM | PCMCIA 5V EJECT HEADER ASSY. |
| | | | | angles | .XXX ±.050 | | product family |
| | | | | dr | 0° ±2° | size | dwg no |
| | | | | engr | | scale | 98751 |
| | | | | chr | G.PETERS 08/01/02 | 1:1 | code |
| | | | | appd | D.BRANN 08/01/02 | | 213 |
| sheet | revision | | | | | | 6 of |
| index | sheet | | | | | | |

ACAD

PDM: Rev:D

STATUS: Released 2.6 Printed: Oct 12, 2014

Tous droits strictement reserves. Reproduction ou communication a des tiers
 interdite sous quelque forme que ce soit sans autorisation ecrite du proprietaire.
 Propriete de c FCI. Droits de reproduction FCI.

All rights strictly reserved. Reproduction or issue to third parties in any
 form whatever is not permitted without written authority from the proprietor.
 Property of FCI. Copyright FCI.

Board Keep Out Zone (NOT INCLUDING HEADER)

FIGURE "A"
KEEP OUT ZONE FOR STANDOFF VERSION

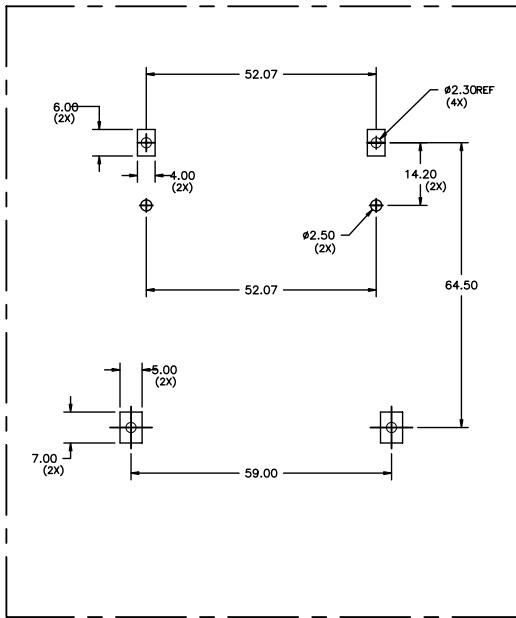
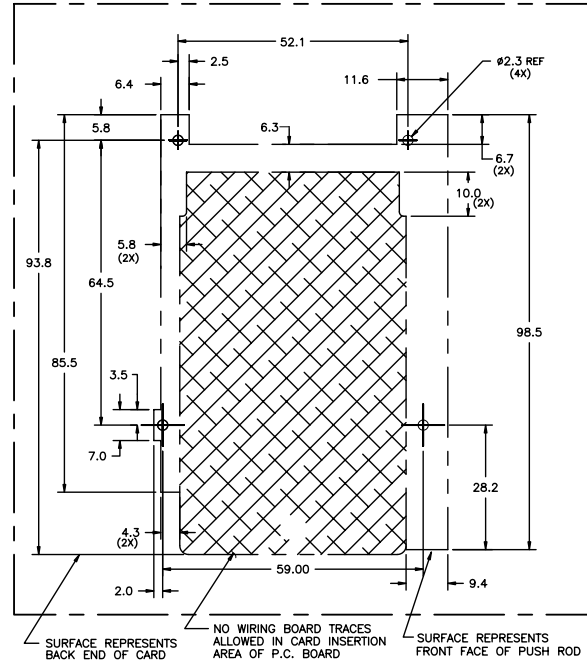


FIGURE "B" NOTE 1
KEEP OUT ZONE FOR NO STANDOFF VERSION
RIGHT HAND PUSHROD VERSION SHOWN
MIRROR IMAGE FOR LEFT HAND PUSHROD



NOTES:

- ① ALL DIMENSIONS SHOWN ARE NOMINAL AND DEFINE THE OUTSIDE SURFACES OF THE ASSEMBLY. A MINIMUM OF 0.25mm (0.010") CLEARANCE BETWEEN THE ASSEMBLY AND ANY COMPONENTS IS SUGGESTED.

| | | | | | | | |
|-------------|----------------|---------------------------------------|------|---------------|-------------------|------------------------|---------------------------------|
| mat'l. code | | tolerances unless otherwise specified | | CUSTOMER COPY | | www.Fciconnect.com | |
| ltr | ecn no | dr | date | linear | .X ±.3 | projection | title |
| c | | | | | .XX ±.10 | MM | PCMCIA 5V EJECT HEADER ASSY. |
| | | | | angles | .XXX ±.050 | | product family |
| | | | | dr | 0° ±2' | size | dwg no |
| | | | | engr | G.PETERS 08/01/02 | scale | 98751 |
| | | | | chr | D.BRANN 08/01/02 | 1:1 | code |
| | | | | appd | G.PETERS 08/01/02 | | 213 |
| | | | | | D.BRANN 08/01/02 | | sheet |
| sheet index | revision sheet | | | | | | 7 of |

ACAD

PDM: Rev:D

STATUS Released 2.6 Printed: Oct 12, 2014

All rights strictly reserved. Reproduction or issue to third parties in any form whatever is not permitted without written authority from the proprietor. Property of FCI. Copyright FCI.

Tous droits strictement réservés. Reproduction ou communication à des tiers intervenue sous quelque forme que ce soit sans autorisation écrite du propriétaire. Propriété de c FCI. Droits de reproduction FCI.