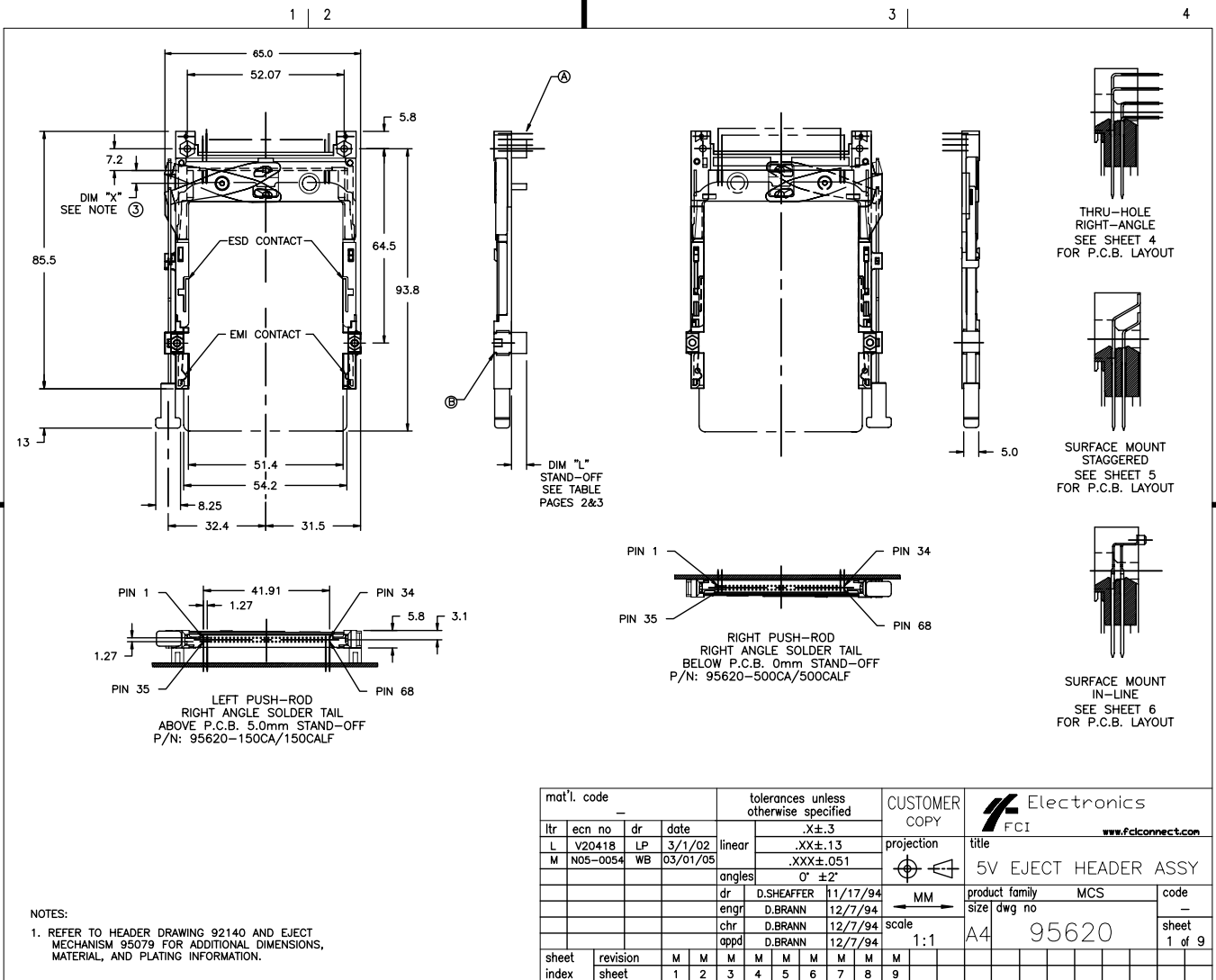


Tous droits strictement réservés. Reproduction ou communication à des tiers
interdite sous quelque forme que ce soit sans autorisation écrite du propriétaire.
Propriété de c FCI. Droits de reproduction FCI.

All rights strictly reserved. Reproduction or issue to third parties in any
form whatever is not permitted without written authority from the proprietor.
Property of FCI. Copyright FCI.

FCI



NOTES:
1. REFER TO HEADER DRAWING 92140 AND EJECT MECHANISM 95079 FOR ADDITIONAL DIMENSIONS, MATERIAL, AND PLATING INFORMATION.

| | | | | | | | |
|-------------|----------|---------------------------------------|----------|---------------|---------------------|-----------------------------------|--------|
| mat'l. code | | tolerances unless otherwise specified | | CUSTOMER COPY | | Electronics www.fciconnect.com | |
| ltr | ecn no | dr | date | linear | projection | title | |
| L | V20418 | LP | 3/1/02 | .X±.3 | | 5V EJECT HEADER ASSY | |
| M | N05-0054 | WB | 03/01/05 | .XX±.13 | | product family | MCS |
| | | | | .XXX±.051 | MM | size | dwg no |
| | | | | angles | scale | A4 | 95620 |
| | | | | dr | 1:1 | sheet | 1 of 9 |
| | | | | enrg | D.SHEAFFER 11/17/94 | | |
| | | | | chr | D.BRANN 12/7/94 | | |
| | | | | appd | D.BRANN 12/7/94 | | |
| sheet | revision | M | M | M | M | M | M |
| index | sheet | 1 | 2 | 3 | 4 | 5 | 6 |

DESCRIPTION: ABOVE P.C.B., DECK AND PUSH-ROD LOCATION ARE AS VIEWED BY USER.

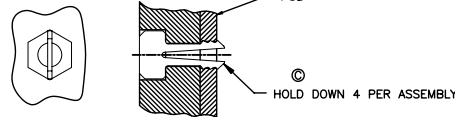
| PRODUCT NO. 95620-XXXXX | PUSH ROD LOCATION | SOLDER TAIL ⑤ | STAND-OFF HEIGHT DIM "L" | EJ. HEADER ASSY 92140-XXX ① | EJ. MECHANISM ASSY 95079-XXXX ② | SOLDERABLE HOLD DOWN (4) ③ | MOUNTING STYLE TO PCB AND PUSH-ROD LOCATION | USED WITH/COMMENTS |
|----------------------------|----------------------|---------------------|--------------------------------|--------------------------------------|--|----------------------------------|---|-----------------------|
| 000CA | RIGHT | R/A | 0.0 | 000 | 00CA | | | |
| 000CAH ⑦ | RIGHT | R/A | 0.0 | 000 | 00CA | 93925-001 | | |
| 001CA | RIGHT | SMT-STG | 0.0 | 001 | 00CA | | | |
| 002CA | RIGHT | SMT-IL | 0.0 | 002 | 00CA | | | |
| 020CA | RIGHT | R/A | 2.0 | 040 | 02CA | | | |
| 040CA | RIGHT | R/A | 4.0 | 010 | 04CA | | | |
| 050CA | RIGHT | R/A | 5.0 | 020 | 05CA | | | |
| 050CAH ⑦ | RIGHT | R/A | 5.0 | 020 | 05CA | 93925-004 | | |
| 100CA | LEFT | R/A | 0.0 | 000 | 10CA | | | |
| 100CAH ⑦ | LEFT | R/A | 0.0 | 000 | 10CA | 93925-001 | | |
| 101CA | LEFT | SMT-STG | 0.0 | 001 | 10CA | | | |
| 102CA | LEFT | SMT-IL | 0.0 | 002 | 10CA | | | |
| 120CA | LEFT | R/A | 2.0 | 040 | 12CA | | | |
| 140CA | LEFT | R/A | 4.0 | 010 | 14CA | | | |
| 150CA | LEFT | R/A | 5.0 | 020 | 15CA | | | |
| 005CA | RIGHT | R/A | 0.0 | 005 | 00CA | | | 95620-000CA or -100CA |
| 025CA | RIGHT | R/A | 0.0 | 045 | 00CA | | | 95620-020CA or -120CA |
| 105CA | LEFT | R/A | 0.0 | 005 | 10CA | | | 95620-000CA or -100CA |
| 125CA | LEFT | R/A | 0.0 | 045 | 10CA | | | 95620-020CA or -120CA |

- 6 BOARD KEEP OUT ZONE- PAGE 9
- ⑦ SOLDERABLE HOLD DOWN

NOTES:

- MATERIAL:
 - 1.1 HEADER ASSY:
 - PLASTIC HOUSING: LCP UL94V-0 BLACK - ABOVE PCB
 - LCP UL94V-0 NATURAL (WHITE) - BELOW PCB
 - PIN: PHOSPHOR BRONZE
 - 1.2 EJECT MECHANISM ASSY:
 - PLASTIC GUIDE: POLYPHTHARAMID UL94V-0 BLACK
 - PLASTIC PUSH-ROD BUTTON: POLYPHTHARAMID UL94V-0 BLACK
 - COVER PLATE, EJECT PLATE, LINK ARM,
 - PUSH ROD: STAINLESS STEEL
 - EMI CONTACT: PHOSPHOR BRONZE
- FINISH (PIN)
 - UNDER PLATING: 0.5um Ni
 - CONTACT AREA: 0.1um GOLD OVER
 - 0.5um Pd-Ni
 - SOLDER TAIL: 2.5um Sn-Pb
- DIM "X"

| | | |
|---------|--------|------------------|
| 4.25±.1 | 3.5±.1 | 5.0±.1 |
| OTHERS | 36,67 | 1,17,34,35,51,68 |
- RECOMMENDED HOLD DOWN - 2mm SCREWS (95121-XXX)AND HEXNUTS (92869-001). RECOMMENDED SCREW TORQUE: 1.0 TO 1.5 MAX in-lbs. (1.2-1.7 cm-kgs).
- SOLDER TAIL KEY/PCB LAYOUT:
 - R/A = RIGHT ANGLE PIN-THROUGH-HOLE-PAGE 6
 - SMT-STG = STAGGERED SURFACE MOUNT-PAGE 7
 - SMT-IL = SURFACE MOUNT IN-LINE (SINGLE ROW)-PAGE 8



| | | | | | | | | |
|-------------|----------------|---------------------------------------|------|---------------|-----------|--|----------------------|----------------|
| mat'l. code | | tolerances unless otherwise specified | | CUSTOMER COPY | | Electronics FCI www.fciconnect.com | | |
| ltr | ecn no | dr | date | linear | .X±.3 | projection | title | |
| M | | | | angles | .XX±.13 | | 5V EJECT HEADER ASSY | |
| | | | | | .XXX±.051 | | | product family |
| | | | | dr | G.CLEMENS | 12/20/99 | code | - |
| | | | | enrg | D.BRANN | 12/20/99 | size | dwg no |
| | | | | chr | D.BRANN | 12/20/99 | scale | A4 |
| | | | | appd | D.BRANN | 12/20/99 | 1:1 | 95620 |
| sheet index | revision sheet | | | | | | | sheet 2 of |

Tous droits strictement reserves. Reproduction ou communication a des tiers interdite sous quelque forme que ce soit sans autorisation ecrite du proprietaire. Propriete de c FCI. Droits de reproduction FCI.

All rights strictly reserved. Reproduction or issue to third parties in any form whatever is not permitted without written authority from the Proprietor. Property of FCI. Copyright FCI.

DESCRIPTION: ABOVE P.C.B., DECK AND PUSH-ROD LOCATION ARE AS VIEWED BY USER.

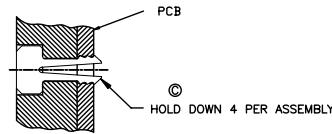
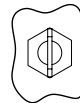
| PRODUCT NO. 95620-XXXXX | PUSH ROD LOCATION | SOLDER TAIL ⑤ | STAND-OFF HEIGHT DIM "L" | EJ. HEADER ASSY 92140-XXX A | EJ. MECHANISM ASSY 95079-XXXX B | SOLDERABLE HOLD DOWN (4) C | MOUNTING STYLE TO PCB AND PUSH-ROD LOCATION | USED WITH/COMMENTS |
|----------------------------|----------------------|---------------------|--------------------------------|--------------------------------------|--|----------------------------------|---|---------------------------|
| 000CALF | RIGHT | R/A | 0.0 | 000LF | 00CA | | | |
| 000CAHLF ① | RIGHT | R/A | 0.0 | 000LF | 00CA | 93925-001 | | |
| 001CALF | RIGHT | SMT-STG | 0.0 | 001LF | 00CA | | | |
| 002CALF | RIGHT | SMT-IL | 0.0 | 002LF | 00CA | | | |
| 020CALF | RIGHT | R/A | 2.0 | 040LF | 02CA | | | |
| 040CALF | RIGHT | R/A | 4.0 | 010LF | 04CA | | | |
| 050CALF | RIGHT | R/A | 5.0 | 020LF | 05CA | | | |
| 050CAHLF ① | RIGHT | R/A | 5.0 | 020LF | 05CA | 93925-004 | | |
| 100CALF | LEFT | R/A | 0.0 | 000LF | 10CA | | | |
| 100CAHLF ① | LEFT | R/A | 0.0 | 000LF | 10CA | 93925-001 | | |
| 101CALF | LEFT | SMT-STG | 0.0 | 001LF | 10CA | | | |
| 102CALF | LEFT | SMT-IL | 0.0 | 002LF | 10CA | | | |
| 120CALF | LEFT | R/A | 2.0 | 040LF | 12CA | | | |
| 140CALF | LEFT | R/A | 4.0 | 010LF | 14CA | | | |
| 150CALF | LEFT | R/A | 5.0 | 020LF | 15CA | | | |
| 005CALF | RIGHT | R/A | 0.0 | 005LF | 00CA | | | 95620-000CALF or -100CALF |
| 025CALF | RIGHT | R/A | 0.0 | 045LF | 00CA | | | 95620-020CALF or -120CALF |
| 105CALF | LEFT | R/A | 0.0 | 005LF | 10CA | | | 95620-000CALF or -100CALF |
| 125CALF | LEFT | R/A | 0.0 | 045LF | 10CA | | | 95620-020CALF or -120CALF |

NOTES:

- MATERIAL:
 - HEADER ASSY:
 - PLASTIC HOUSING: LCP UL94V-0 BLACK - ABOVE PCB
 - LCP UL94V-0 NATURAL (WHITE) - BELOW PCB
 - PIN: PHOSPHOR BRONZE
 - EJECT MECHANISM ASSY:
 - PLASTIC GUIDE: POLYPHTHARAMID UL94V-0 BLACK
 - PLASTIC PUSH-ROD BUTTON: POLYPHTHARAMID UL94V-0 BLACK
 - COVER PLATE, EJECT PLATE, LINK ARM, PUSH ROD: STAINLESS STEEL
 - EMI CONTACT: PHOSPHOR BRONZE
- FINISH (PIN)
 - UNDER PLATING: 0.5um Ni
 - CONTACT AREA: 0.1um GOLD OVER
- SOLDER TAIL:

| | |
|-------------|------------------|
| 0.5um Sn-Pb | 2.5um Sn-Pb |
| ③ DIM "X" | |
| 4.25±.1 | 3.5±.1 |
| 5.0±.1 | |
| OTHERS | 36.67 |
| | 1,17,34,35,51,68 |
- RECOMMENDED HOLD DOWN - 2mm SCREWS (95121-XXX)AND HEXNUTS (92869-001). RECOMMENDED SCREW TORQUE: 1.0 TO 1.5 MAX in-lbs. (1.2-1.7 cm-kgs).
- SOLDER TAIL KEY/PCB LAYOUT:
 - R/A = RIGHT ANGLE PIN-THROUGH-HOLE-PAGE 6
 - SMT-STG = STAGGERED SURFACE MOUNT-PAGE 7
 - SMT-IL = SURFACE MOUNT IN-LINE (SINGLE ROW)-PAGE 8
- IF LEAD FREE P/N, THE HOUSING WILL WITHSTAND EXPOSURE TO 260°C PEAK TEMPERATURE. SOLDER TAIL : SMT-IL, SMT-STG CAN RESIST 40 SECONDS IN A CONVECTION, INFRA-RED OR VAPOR PHASE REFLOW OVEN. SOLDER TAIL : R/A CAN RESIST TO SECONDS IN A WAVE SOLDER APPLICATION WITH A 1.00MM MINIMUM THICK CIRCUIT BOARD.
- IF LEAD FREE P/N,THE PRODUCT MEETS EUROPEAN UNION DIRECTIVES AND OTHER COUNTRY REGULATIONS AS DESCRIBED IN GS-22-008
- LEAD FREE P/N PACKAGING MEETS GS-14-920 SPECIFICATION

- BOARD KEEP OUT ZONE- PAGE 9
- SOLDERABLE HOLD DOWN



| | | | | | | | |
|-------------|----------|---------------------------------------|------|---------------|--------------------|--|----------------------|
| mat'l. code | | tolerances unless otherwise specified | | CUSTOMER COPY | | Electronics FCI www.fciconnect.com | |
| ltr | ecn no | dr | date | linear | .X±.3 | projection | title |
| M | | | | | .XX±.13 | | 5V EJECT HEADER ASSY |
| | | | | angles | .XXX±.051 | | |
| | | | | dr | G.CLEMENS 12/20/99 | MM | code |
| | | | | enrg | D.BRANN 12/20/99 | size | dwg no |
| | | | | chr | D.BRANN 12/20/99 | scale | 95620 |
| | | | | appd | D.BRANN 12/20/99 | 1:1 | sheet |
| sheet | revision | | | | | | 3 of |
| index | sheet | | | | | | |

Tous droits strictement reserves. Reproduction ou communication a des tiers interdicte sous quelque forme que ce soit sans autorisation ecrite du proprietaire. Propriete de c FCI. Droits de reproduction FCI.

All rights strictly reserved. Reproduction or issue to third parties in any form whatever is not permitted without written authority from the Proprietor. Property of FCI. Copyright FCI.

DESCRIPTION: BELOW P.C.B., DECK AND PUSH-ROD LOCATION ARE AS VIEWED BY USER.

| PRODUCT NO. 95620-XXXXX | PUSH ROD LOCATION | SOLDER TAIL ⑤ | STAND-OFF HEIGHT DIM "L" | EJ. HEADER ASSY 92140-XXX ① | EJ. MECHANISM ASSY 95079-XXXX ② | SOLDERABLE HOLD DOWN (4) ③ | MOUNTING STYLE TO PCB AND PUSH-ROD LOCATION | USED WITH/COMMENTS |
|----------------------------|----------------------|---------------------|--------------------------------|--------------------------------------|--|----------------------------------|---|-----------------------|
| 500CA | RIGHT | R/A | 0.0 | 500 | 10CA | | | |
| 500CAH | RIGHT | R/A | 0.0 | 500 | 10CA | 93925-001 | | |
| 501CA | RIGHT | SMT-STG | 0.0 | 501 | 10CA | | | |
| 502CA | RIGHT | SMT-IL | 0.0 | 502 | 10CA | | | |
| 503CA | RIGHT | SMT-IL | 0.0 | 503 | 10CA | | | |
| 520CA | RIGHT | R/A | 2.0 | 540 | 12CA | | | NO BOARD LOCATORS |
| 540CA | RIGHT | R/A | 4.0 | 510 | 14CA | | | |
| 550CA | RIGHT | R/A | 5.0 | 520 | 15CA | | | |
| 600CA | LEFT | R/A | 0.0 | 500 | 00CA | | | |
| 601CA | LEFT | SMT-STG | 0.0 | 501 | 00CA | | | |
| 602CA | LEFT | SMT-IL | 0.0 | 502 | 00CA | | | |
| 620CA | LEFT | R/A | 2.0 | 540 | 02CA | | | |
| 640CA | LEFT | R/A | 4.0 | 510 | 04CA | | | |
| 650CA | LEFT | R/A | 5.0 | 520 | 05CA | | | |
| 505CA | RIGHT | R/A | 0.0 | 505 | 10CA | | | 95620-500CA or -600CA |
| 525CA | RIGHT | R/A | 0.0 | 545 | 10CA | | | 95620-520CA or -620CA |
| 605CA | LEFT | R/A | 0.0 | 505 | 00CA | | | 95620-500CA or -600CA |
| 625CA | LEFT | R/A | 0.0 | 545 | 00CA | | | 95620-520CA or -620CA |

NOTES:

- MATERIAL:
 - HEADER ASSY:
 - PLASTIC HOUSING: LCP UL94V-0 BLACK - ABOVE PCB
 - LCP UL94V-0 NATURAL (WHITE) - BELOW PCB
 - PIN: PHOSPHOR BRONZE
 - EJECT MECHANISM ASSY:
 - PLASTIC GUIDE: POLYPHTHARAMID UL94V-0 BLACK
 - PLASTIC PUSH-ROD BUTTON: POLYPHTHARAMID UL94V-0 BLACK
 - COVER PLATE, EJECT PLATE, LINK ARM, PUSH ROD: STAINLESS STEEL
 - EMI CONTACT: PHOSPHOR BRONZE
- FINISH (PIN)
 - UNDER PLATING: 0.5um Ni
 - CONTACT AREA: 0.1um GOLD OVER
 - 0.5um Pd-Ni
 - 2.5um Sn-Pb
- DIM "X"

| | | |
|---------|--------|------------------|
| 4.25±.1 | 3.5±.1 | 5.0±.1 |
| OTHERS | 36,67 | 1,17,34,35,51,88 |
- RECOMMENDED HOLD DOWN - 2mm SCREWS (95121-XXX) AND HEXNUTS (92869-001). RECOMMENDED SCREW TORQUE: 1.0 TO 1.5 MAX in-lbs. (1.2-1.7 cm-kgs).
- SOLDER TAIL KEY/PCB LAYOUT:
 - R/A = RIGHT ANGLE PIN-THROUGH-HOLE-PAGE 6
 - SMT-STG = STAGGERED SURFACE MOUNT-PAGE 7
 - SMT-IL = SURFACE MOUNT IN-LINE (SINGLE ROW)-PAGE 8
- BOARD KEEP OUT ZONE-PAGE 9

| | | | | | | | |
|-------------|----------|---------------------------------------|------|---------------|-----------|------------------------|----------------------|
| mat'l. code | | tolerances unless otherwise specified | | CUSTOMER COPY | | www.fciconnect.com | |
| ltr | ecn no | dr | date | linear | .X±.3 | projection | title |
| M | | | | angles | .XX±.13 | MM | 5V EJECT HEADER ASSY |
| | | | | dr | .XXX±.051 | | product family |
| | | | | enrg | 0' ±2' | size | dwg no |
| | | | | chr | | scale | 95620 |
| | | | | appd | | 1:1 | 4 of |
| sheet | revision | | | | | | |
| index | sheet | | | | | | |

Tous droits strictement reserves. Reproduction ou communication a des tiers
 interdite sous quelque forme que ce soit sans autorisation écrite du propriétaire.
 Propriete de c FCI. Droits de reproduction FCI.

All rights strictly reserved. Reproduction or issue to third parties in any
 form whatever is not permitted without written authority from the proprietor.
 Property of FCI. Copyright FCI.

DESCRIPTION: BELOW P.C.B., DECK AND PUSH-ROD LOCATION ARE AS VIEWED BY USER.

| PRODUCT NO. 95620-XXXXX | PUSH ROD LOCATION | SOLDER TAIL ⑤ | STAND-OFF HEIGHT DIM "L" | EJ. HEADER ASSY 92140-XXX ① | EJ. MECHANISM ASSY 95079-XXXX ② | SOLDERABLE HOLD DOWN (4) ③ | MOUNTING STYLE TO PCB AND PUSH-ROD LOCATION | USED WITH/COMMENTS |
|----------------------------|----------------------|---------------------|--------------------------------|--------------------------------------|--|----------------------------------|---|-----------------------|
| 500CALF | RIGHT | R/A | 0.0 | 500LF | 10CA | | | |
| 500CAHLF | RIGHT | R/A | 0.0 | 500LF | 10CA | 93925-001 | | |
| 501CALF | RIGHT | SMT-STG | 0.0 | 501LF | 10CA | | | |
| 502CALF | RIGHT | SMT-IL | 0.0 | 502LF | 10CA | | | |
| 503CALF | RIGHT | SMT-IL | 0.0 | 503LF | 10CA | | | |
| 520CALF | RIGHT | R/A | 2.0 | 540LF | 12CA | | | NO BOARD LOCATORS |
| 540CALF | RIGHT | R/A | 4.0 | 510LF | 14CA | | | |
| 550CALF | RIGHT | R/A | 5.0 | 520LF | 15CA | | | |
| 600CALF | LEFT | R/A | 0.0 | 500LF | 00CA | | | |
| 601CALF | LEFT | SMT-STG | 0.0 | 501LF | 00CA | | | |
| 602CALF | LEFT | SMT-IL | 0.0 | 502LF | 00CA | | | |
| 620CALF | LEFT | R/A | 2.0 | 540LF | 02CA | | | |
| 640CALF | LEFT | R/A | 4.0 | 510LF | 04CA | | | |
| 650CALF | LEFT | R/A | 5.0 | 520LF | 05CA | | | |
| 505CALF | RIGHT | R/A | 0.0 | 505LF | 10CA | | | 95620-500CA or -600CA |
| 525CALF | RIGHT | R/A | 0.0 | 545LF | 10CA | | | 95620-520CA or -620CA |
| 605CALF | LEFT | R/A | 0.0 | 505LF | 00CA | | | 95620-500CA or -600CA |
| 625CALF | LEFT | R/A | 0.0 | 545LF | 00CA | | | 95620-520CA or -620CA |

NOTES:

- MATERIAL:
 - 1.1 HEADER ASSY:
PLASTIC HOUSING: LCP UL94V-0 BLACK - ABOVE PCB
LCP UL94V-0 NATURAL (WHITE) - BELOW PCB
PIN: PHOSPHOR BRONZE
 - 1.2 EJECT MECHANISM ASSY:
PLASTIC GUIDE: POLYPHTHAMID UL94V-0 BLACK
PLASTIC PUSH-ROD BUTTON: POLYPHTHAMID UL94V-0 BLACK
COVER PLATE, EJECT PLATE, LINK ARM,
PUSH ROD: STAINLESS STEEL
EMI CONTACT: PHOSPHOR BRONZE
- FINISH (PIN)
 - UNDER PLATING: 0.5um Ni
 - CONTACT AREA: 0.1um GOLD OVER
 - 0.5um Pd-Ni
 - SOLDER TAIL: 2.5um Sn-Pb

- IF LEAD FREE P/N. THE HOUSING WILL WITHSTAND EXPOSURE TO 260°C PEAK TEMPERATURE
SOLDER TAIL : SMT-IL, SMT-STG CAN RESIST 40 SECONDS IN A CONVECTION,
INFRA-RED OR VAPOR PHASE REFLOW OVEN.
SOLDER TAIL : R/A CAN RESIST 10 SECONDS IN A WAVE SOLDER APPLICATION
WITH A 1.00MM MINIMUM THICK CIRCUIT BOARD.
- IF LEAD FREE P/N. THE PRODUCT MEETS EUROPEAN UNION DIRECTIVES
AND OTHER COUNTRY REGULATIONS AS DISCRIBLED IN GS-22-008
- LEAD FREE P/N PACKAGING MEETS GS-14-920 SPECIFICATION

⑤ DIM "X"

| | | |
|---------|--------|------------------|
| 4.25±.1 | 3.5±.1 | 5.0±.1 |
| OTHERS | 36,67 | 1,17,34,35,51,88 |

4. RECOMMENDED HOLD DOWN - 2mm SCREWS (95121-XXX) AND
HEXNUTS (92869-001). RECOMMENDED SCREW TORQUE: 1.0 TO
1.5 MAX in-lbs. (1.2-1.7 cm-kgs).

⑤ SOLDER TAIL KEY/PCB LAYOUT:
R/A = RIGHT ANGLE PIN-THROUGH-HOLE-PAGE 6
SMT-STG = STAGGERED SURFACE MOUNT-PAGE 7
SMT-IL = SURFACE MOUNT IN-LINE (SINGLE ROW)-PAGE 8

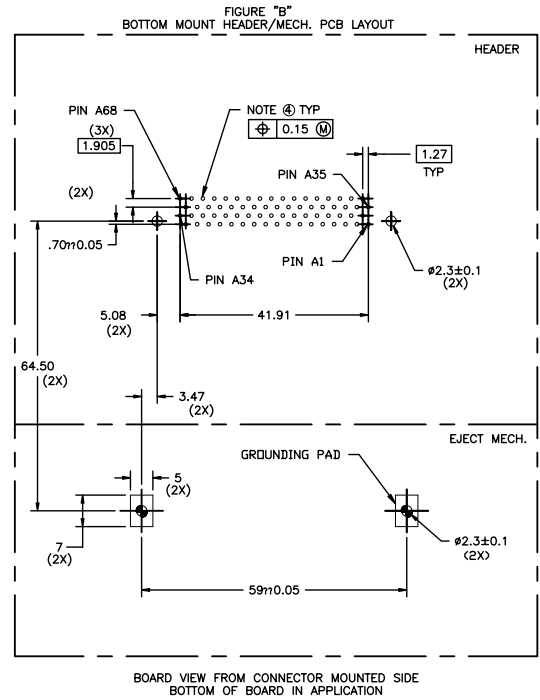
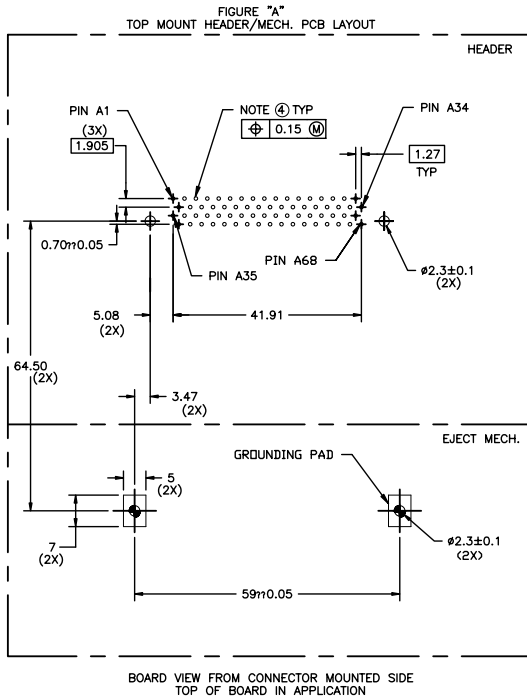
6. BOARD KEEP OUT ZONE-PAGE 9

| | | | | | | | |
|-------------|----------|---------------------------------------|------|---------------|------------|--|-------|
| mat'l. code | | tolerances unless otherwise specified | | CUSTOMER COPY | | Electronics FCI www.fciconnect.com | |
| ltr | ecn no | dr | date | linear | projection | title | |
| M | | | | | | 5V EJECT HEADER ASSY | |
| | | | | angles | | product family | code |
| | | | | dr | G.CLEMENS | 12/20/99 | |
| | | | | enrg | D.BRANN | 12/20/99 | |
| | | | | chr | D.BRANN | 12/20/99 | |
| | | | | appd | D.BRANN | 12/20/99 | |
| sheet | revision | | | | | scale | size |
| index | sheet | | | | | 1:1 | A4 |
| | | | | | | dwg no | 95620 |
| | | | | | | sheet | 5 of |
| | | | | | | cage code | |
| | | | | | | | |

Tous droits strictement reserves. Reproduction ou communication a des tiers interdite sous quelque forme que ce soit sans autorisation ecrite du proprietaire. Propriete de c FCI. Droits de reproduction FCI.

All rights strictly reserved. Reproduction or issue to third parties in any form whatever is not permitted without written authority from the proprietor. Property of FCI. Copyright FCI.

Single Mount Right Angle



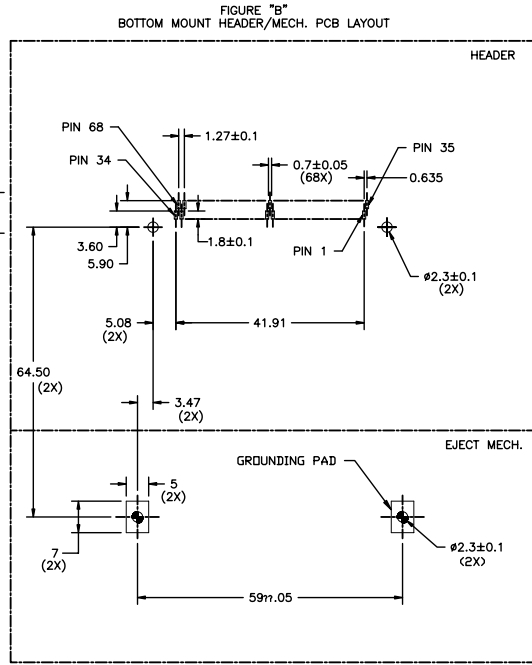
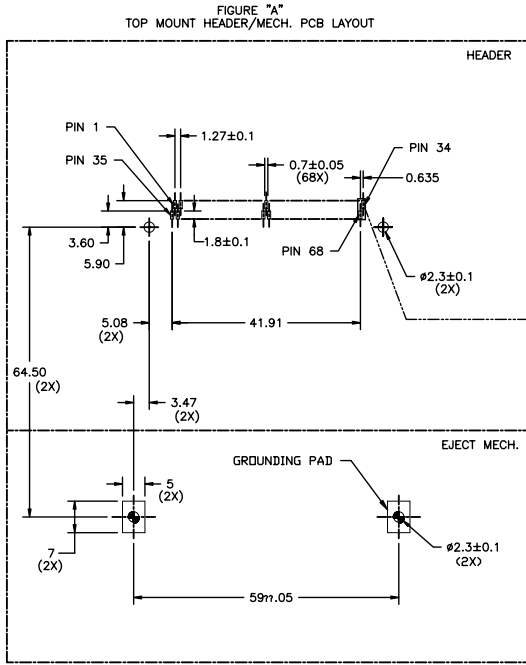
- NOTES:
- 1 ALL TOLERANCES ± 0.15 UNLESS NOTED.
 - 2 KEEP-OUT ZONE FOR HEADERS W/ STAND-OFF OPTIONS SEE SHEET 9 FIGURE A.
 - 3 KEEP-OUT ZONE FOR HEADERS W/O STAND-OFF OPTIONS SEE SHEET 9 FIGURE B.
 - 4 RECOMMENDED DIAMETER IS $\phi 1.0$. FOR PROCESSES USING PASTE REFLOW, HOLE MAY BE AS SMALL AS $\phi 0.79$

| | | | | | | | |
|-------------|----------------|---------------------------------------|------|---------------|--------------------|------------------------|----------------------|
| mat'l. code | | tolerances unless otherwise specified | | CUSTOMER COPY | | www.fciconnect.com | |
| ltr | ecn no | dr | date | linear | .X \pm .3 | projection | title |
| M | | | | | .XX \pm .13 | MM | 5V EJECT HEADER ASSY |
| | | | | angles | .XXX \pm .051 | | product family |
| | | | | dr | G.CLEMENS 12/20/99 | size | dwg no |
| | | | | enrg | D.BRANN 12/20/99 | scale | 95620 |
| | | | | chr | D.BRANN 12/20/99 | 1:1 | A4 |
| | | | | appd | D.BRANN 12/20/99 | | |
| sheet index | revision sheet | | | | | | cage code |
| | | | | | | | 26 |
| | | | | | | | 4 |

All rights strictly reserved. Reproduction or issue to third parties in any form whatever is not permitted without written authority from the Proprietor. Property of FCI. Copyright FCI.

Tous droits strictement reserves. Reproduction ou communication a des tiers interdire sous quelque forme que ce soit sans autorisation ecrite du proprietaire. Propriete de c FCI. Droits de reproduction FCI.

Surface Mount 2-Row



BOARD VIEW FROM CONNECTOR MOUNTED SIDE
TOP OF BOARD IN APPLICATION

BOARD VIEW FROM CONNECTOR MOUNTED SIDE
BOTTOM OF BOARD IN APPLICATION

NOTES:

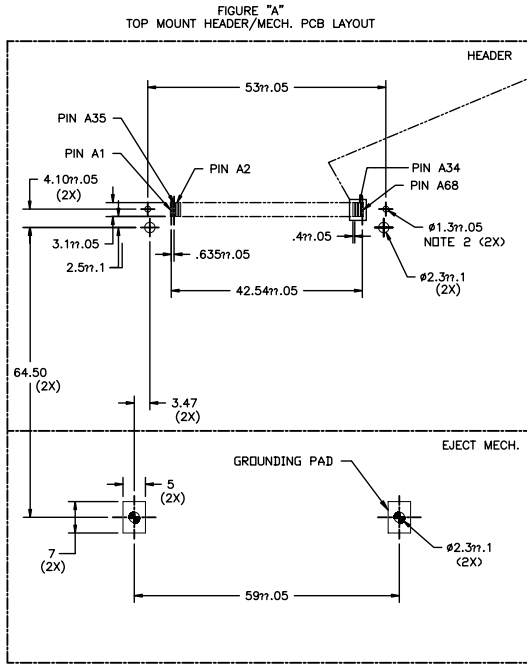
- 1 ALL TOLERANCES ±0.15 UNLESS NOTED.
- 2 KEEP-OUT ZONE FOR ASSEMBLIES SHOWN ON SHEET 9 FIGURE B.

| | | | | | | | |
|-------------|----------------|---------------------------------------|------|---------------|--------------------|--|----------------------|
| mat'l. code | | tolerances unless otherwise specified | | CUSTOMER COPY | | FCI www.fciconnect.com | |
| ltr | ecn no | dr | date | linear | .X±.3 | projection | title |
| M | | | | | .XX±.13 | MM | 5V EJECT HEADER ASSY |
| | | | | angles | .XXX±.051 | | product family |
| | | | | dr | 0° ±2' | size | dwg no |
| | | | | engr | G.CLEMENS 12/20/99 | scale | A4 95620 |
| | | | | chr | D.BRANN 12/20/99 | 1:1 | code |
| | | | | appd | D.BRANN 12/20/99 | | sheet |
| sheet index | revision sheet | | | | | | 7 of |

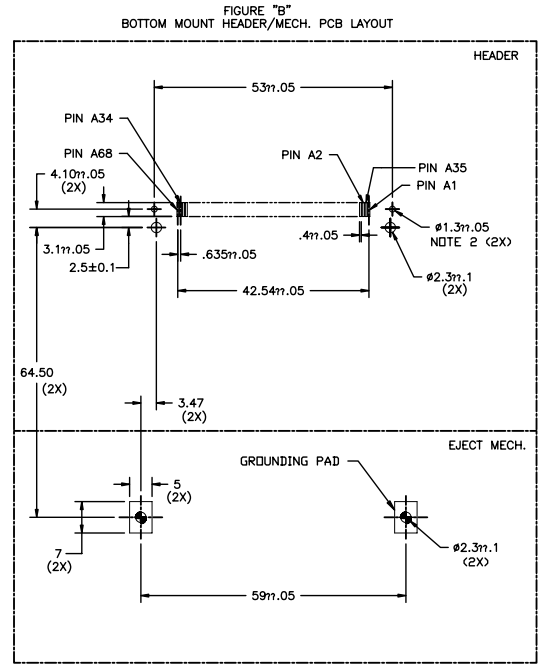
Tous droits strictement réservés. Reproduction ou communication à des tiers
 interdite sous quelque forme que ce soit sans autorisation écrite du propriétaire.
 Propriété de c FCI. Droits de reproduction FCI.

All rights strictly reserved. Reproduction or issue to third parties in any
 form whatever is not permitted without written authority from the proprietor.
 Property of FCI. Copyright FCI.

Surface Mount In-Line



BOARD VIEW FROM CONNECTOR MOUNTED SIDE
TOP OF BOARD IN APPLICATION



BOARD VIEW FROM CONNECTOR MOUNTED SIDE
BOTTOM OF BOARD IN APPLICATION

NOTES:

- 1 ALL TOLERANCES ±.15 UNLESS NOTED.
- 2 THIS HOLE REQUIRED FOR HEADERS WITH BOARD LOCATOR.
- 3 KEEP-OUT ZONE FOR ASSEMBLIES SHOWN ON SHEET 9 FIGURE B.

| | | | | | | | | |
|-------------|----------------|---------------------------------------|------|---------------|-----------|--|----------------------|------------|
| mat'l. code | | tolerances unless otherwise specified | | CUSTOMER COPY | | FCI www.fciconnect.com | | |
| ltr | ecn no | dr | date | linear | .X±.3 | projection | title | |
| M | | | | | .XX±.13 | MM | 5V EJECT HEADER ASSY | |
| | | | | angles | .XXX±.051 | | product family | MCS |
| | | | | dr | G.CLEMENS | 12/20/99 | size | dwg no |
| | | | | enrg | D.BRANN | 12/20/99 | scale | 1:1 |
| | | | | chr | D.BRANN | 12/20/99 | A4 | 95620 |
| | | | | appd | D.BRANN | 12/20/99 | | sheet 8 of |
| sheet index | revision sheet | | | | | | | |

Tous droits strictement reserves. Reproduction ou communication a des tiers
 interdite sous quelque forme que ce soit sans autorisation ecrite du proprietaire.
 Propriete de c FCI. Droits de reproduction FCI.

All rights strictly reserved. Reproduction or issue to third parties in any
 form whatever is not permitted without written authority from the proprietor.
 Property of FCI. Copyright FCI.