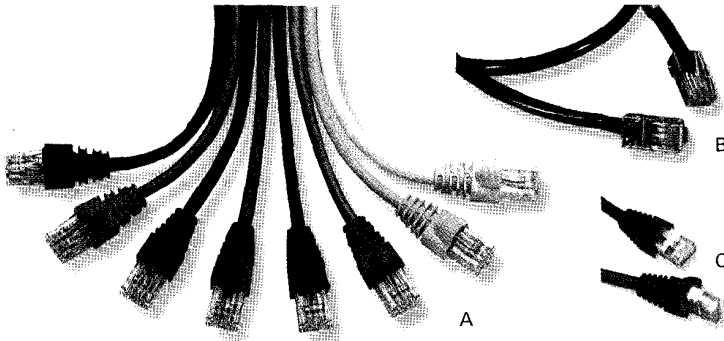


## Patch Cable Assemblies

### Category 5 Patch Cable Assemblies



#### Product Facts

- :: Meet or exceed Category 5 performance standards
- :: Unshielded cable assemblies feature 4-Pair stranded unshielded, 24 AWG conductors
- :: Shielded cable assemblies feature 4-Pair stranded 26 AWG conductors
- :: Non-Plenum (CMR rated)
- :: Booted cable assemblies feature color-matched snagless boots
- :: Universal wiring (T568A/T568B)

3.4

Description	Figure	Part Number							
		Black	Gray	Blue	Green	Red	White	Yellow	Orange
Booted Unshielded	A	219200-X	219197-X	219198-X	219199-X	219201-X	219202-X	219203-X	219214-X
Bootless Unshielded	B	219207-X	219152-X	219205-X	219206-X	219208-X	219159-X	219204-X	219215-X
Booted Shielded	C	557827-Y	-	-	-	-	-	-	-

X denotes length in feet: -1 = 1, -2 = 2, -3 = 3, -4 = 4, -5 = 5, -6 = 6, -7 = 7, -8 = 8, -9 = 9, 1-0 = 10, 1-2 = 12, 1-4 = 14, 1-5 = 15, 1-6 = 16, 2-0 = 20, 2-5 = 25, 3-0 = 30, 5-0 = 50

Y denotes length in feet: -1 = 2, -2 = 4, -3 = 6, -4 = 8, -5 = 12, -6 = 16, -7 = 20, -8 = 10, -9 = 75, 1-0 = 50

### Ethernet Crossover Cable Assemblies

#### Product Facts

- :: Category 5e and Category 5 crossover cables are compatible with IEEE 802.3 10/100BASE-T
- :: Category 6 crossover cables are compatible with 10/100BASE-T, as well as IEEE 802.3 1000BASE-T
- :: For other lengths and wiring diagrams, see Customer Drawing

Performance	Cable/Boot Color	Part Number
Category 6	Standard Red/Black	1499150-X
Category 5e	Standard White/Black	1499151-Y
Category 5	Standard Orange/Black	219153-Z

X denotes length in feet: -3 = 3, -5 = 5, -7 = 7, 1-0 = 10, 1-2 = 12, 1-5 = 15, 2-5 = 25

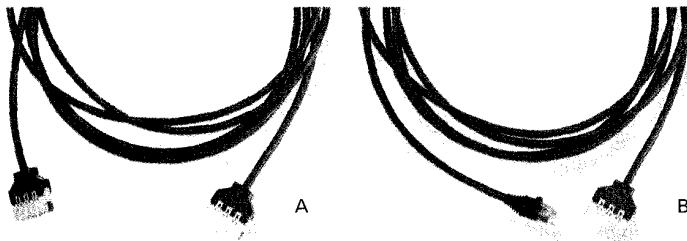
Y denotes length in feet: -3 = 3, -5 = 5, 1-0 = 10, 1-2 = 12, 1-5 = 15

Z denotes length in feet: -1 = 3, -2 = 12, -3 = 5, -4 = 10, -5 = 25

### 610XC Category 6 Cable Assemblies

#### Product Facts

- :: Meet or exceed Category 6 performance requirements
- :: Stranded unshielded, 24 AWG conductors, pair counts as listed
- :: Non-Plenum (CMR)



Description	Figure	Part Number
610XC to 610XC	1-Pair	1479265-X
	2-Pair	1479266-X
	4-Pair	1479267-X
610XC to RJ45	4-Pair, T568A	1499414-X
	4-Pair, T568B	1499413-X

X denotes length in feet: -2 = 2, -4 = 4, -6 = 6, -8 = 8, 1-0 = 10