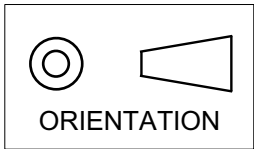
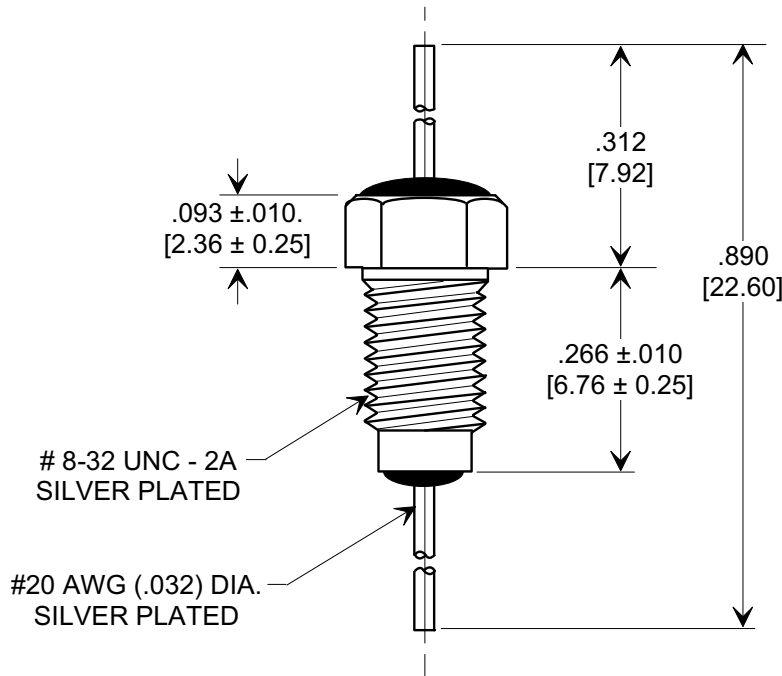
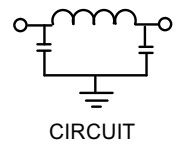
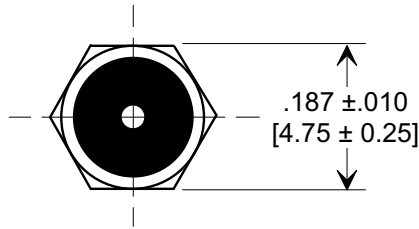


This drawing is the property of Tusonix, Inc., and may not be used, reproduced, published or disclosed to others without expressed authorization by Tusonix Inc.

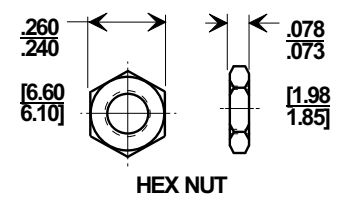
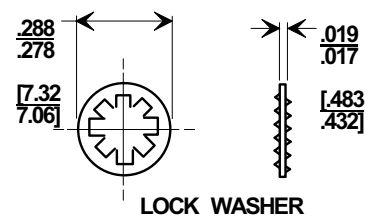
MARKETING SALES DRAWING
DIMENSIONS IN INCHES - DO NOT SCALE THIS DRAWING
DIMENSIONS IN METRIC - []



Electrical Testing
per Tusonix standard
test plans and Mil-Std-202
Test Methods.



MOUNTING HARDWARE



- NOTE:**
1. SUPPLIED WITH SILVER PLATED HEX NUT AND INTERNAL TOOTH LOCK WASHER.
 2. MOUNTING TORQUE NOT TO EXCEED 3 lb-in.

MIN. CAP (pF)	WORKING VOLTAGE	CURRENT	MINIMUM NO LOAD INSERTION LOSS (dB) @ 25°C PER MIL-STD-220			
	125°C		200 MHz	300 MHz	1 GHz	10 GHz
1500	100	10A	50	50	50	50

X-2015 Rev-0 REVISION RECORD Original Release C.O. ECO-666	A	--TOLERANCES-- Unless Otherwise Specified DECIMAL ± .031 [0.79] ANGLES ±	Title MIL-15733/43-0002 BUSHING STYLE EMI FILTER		
	TUSONIX TUCSON, ARIZONA		Drawn L.E. 04-15-09 Scale 4 X		
	A		Approved R.L. 04-15-09		
	4201-506				