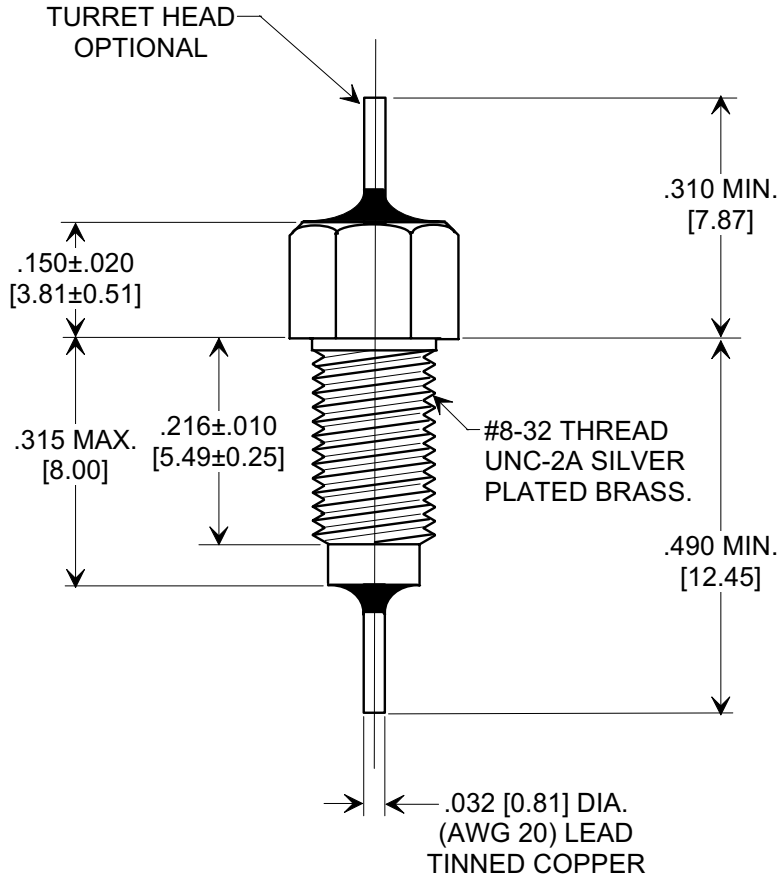
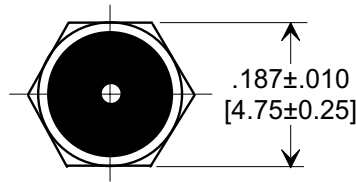
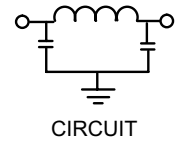
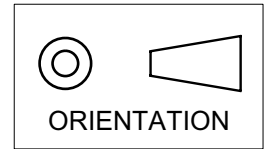


**MARKETING SALES DRAWING**  
**DIMENSIONS IN INCHES - DO NOT SCALE THIS DRAWING**  
**DIMENSIONS IN METRIC - [ ]**

Electrical Testing  
per Tusonix standard  
test plans and Mil-Std-202  
Test Methods.



MIN. CAP.	125°C WORKING VOLTAGE	CURRENT I <sub>dc</sub>	MINIMUM NO LOAD INSERTION LOSS (dB) @ 25°C PER MIL-STD-220					
			10 MHz	50 MHz	100 MHz	200 MHz	1 GHz	10 GHz
10,000 pF	50 VDC	20A	20	50	65	70	70	70

X-2015 Rev-0	<b>REVISION RECORD</b>		<b>--TOLERANCES--</b> Unless Otherwise Specified	Title		
	Original Release C.O.			<b>EMI FILTER MIL 15733/61-0014</b>		
	WAS SK7096-001-S E.C.06-14-93	<b>0</b>				
	DWG. REVISED E.C. 05-12-94	<b>1</b>		Drawn E.C. 11-05-98	Scale 4 X	
ADDED DIM .216 AND RMVD DIMS. .160 & .800, ADDED MIL SLASH # TO TITLE, RDRN TO NEW STD CMPTR FRMT. E.C.11-05-98	<b>19981105-1-01</b>	<b>2</b>	<b>TUSONIX</b> TUCSON, ARIZONA	Approved H.R. 11-05-98		
REVISION 1 CHANGE ORDER # CORRECTED. S.M. 11-19-98	<b>19981118-4-01</b>	<b>3</b>		<b>A</b>	<b>4251-501</b>	
ADDED ORIEN., SILVER NOTE & COPPER NOTE. S.M. 11-21-05	<b>20051116-3-02</b>	<b>4</b>				