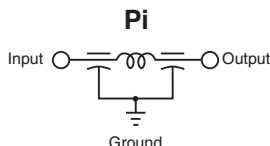


Surface Mount Low Pass Filters SSM & RSM Series

SSM



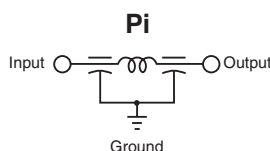
- Working Voltage 100 VDC
- Test Voltage 250 VDC
- Current Max. 10 Amps
- Insulation
- Resistance Min. 10^4 M Ω
- Terminations Silver Ni-Tin plated
- Soldering
- Conditions Max. 250°C -5 sec.
- Marking None
- Packaging Bulk or Tape and Reel

Note: Insertion loss shown for the following SSM values* only:

- 101Z
- 501P
- 202P

*Additional IL charts available by request.

RSM



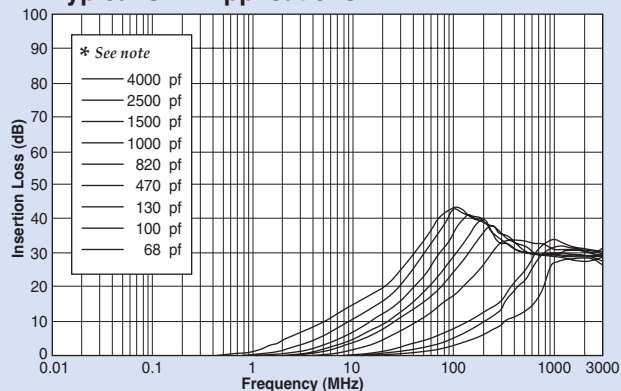
- Working Voltage 100 VDC
- Test Voltage 250 VDC
- Current Max. 10 Amps
- Insulation
- Resistance Min. 10^4 M Ω
- Terminations Silver Ni-Tin plated
- Soldering
- Conditions Max. 250°C -5 sec.
- Marking None
- Packaging Bulk or Tape and Reel

Note: Insertion loss shown for the following RSM values only:

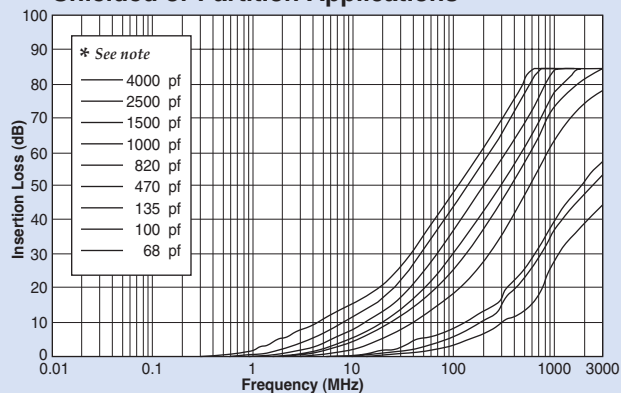
- 152P
- 402Z

Pi Insertion Loss

Typical SMT Applications

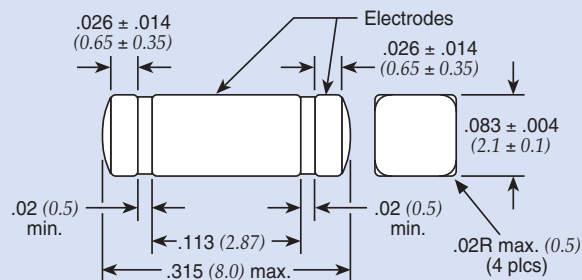


Shielded or Partition Applications

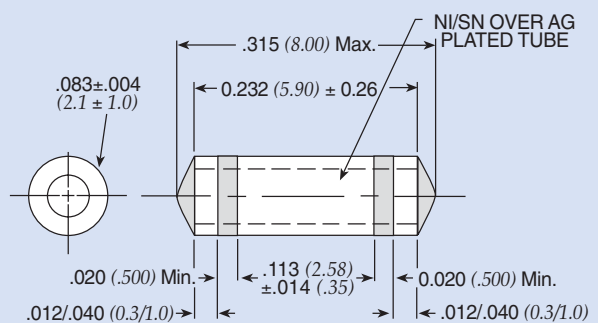


* Capacitance values for insertion loss curves are displayed left to right in the order shown.

SSM



RSM

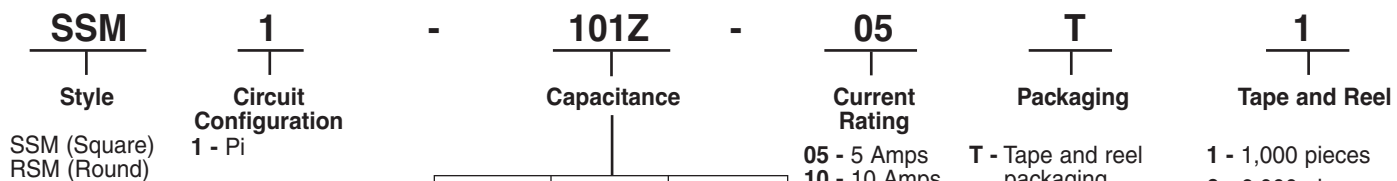


Dimensions in inches (mm)

Surface Mount Low Pass Filters SSM & RSM Series

SSM & RSM Ordering Information

Example: **SSM1-101Z-05T**



† Also available through Spectrum Control's authorized distributors.

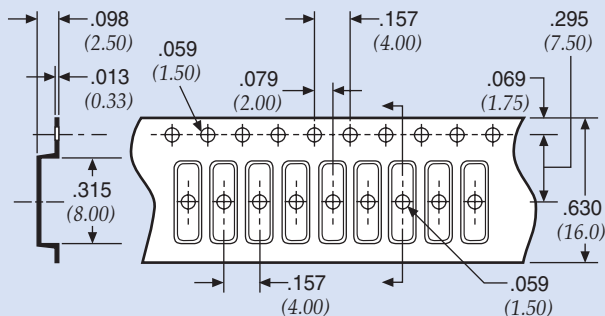
€ Also available through Spectrum Control's authorized European distributors/agents.

† SSM1-152P-05-T1 €

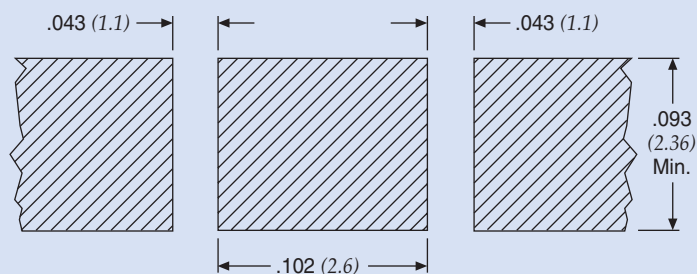
Code	Value	Tolerance
101Z	100 pF	+80/-20%
501P	500 pF	+100/-0%
152P	1500 pF	+100/-0%
202P	2000 pF	+100/-0%
402E	4000 pF	±25
402Z	4000 pF	+80/-20%

Note: Tape and reel packaging - 1,000 pieces (7") and 6,000 pieces (13")

SSM/RSM Tape and Reel Packaging



SSM Recommended Board Pattern



Dimensions in inches (mm)