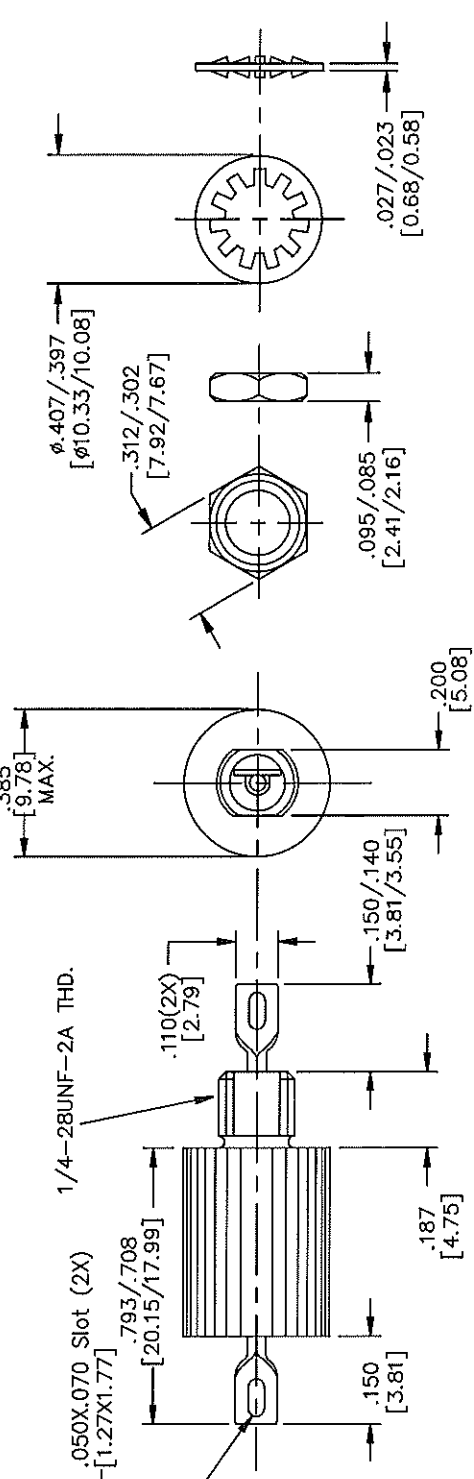


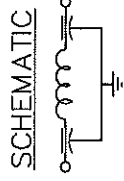
CASE FINISH	CURRENT (AMPS)	WORKING VOLTAGE		MAXIMUM DC RESISTANCE (OHMS)	MAXIMUM VOLTAGE DROP		MINIMUM CAPACITANCE (uF)	MIN. INSERTION LOSS PER MIL-STD-220, FULL LOAD, +25°C									
		-55°C TO +85°C	-55°C TO +125°C		DC	AC		14 KHz	30 KHz	50 KHz	75 KHz	100 KHz	150 KHz	300 KHz	500 KHz	100 MHz	100 MHz
	3.0	DC	125	150	0.09	0.15	--	--	--	5	6	--	47	80	--	70	70

PART MARKING:  
M15733/26-0005  
OLSP2 125°C  
125 VACW 3A  
400Hz 150VDC  
51-311-312



PACKAGE MARKING:  
STANDARD

MARKING NOTES:  
N/A



MTG. HARDWARE

NOTES:  
1) MOUNTING TORQUE NOT TO EXCEED 7in.-lbs.

REV	CHANGE NOTICE	UNLESS OTHERWISE SPECIFIED DIMENSIONS ARE IN INCHES. [MILLIMETERS]	TOLERANCES UNLESS OTHERWISE SPECIFIED	FAIRVIEW PENNSYLVANIA	
45	CN 38679-ENG	DO NOT SCALE.	Fractions ±	SPECTRUM CONTROL, INC.	Description LOW PASS EMI Filter
44	CN 183751		Dec. .xxx±	Dwn. MAYNARD	
			Dec. .xxx±.010	Date 12-11-07	51-311-312
			Angles ±0° 30'	Engr. J.Kraus	
			CODE IDENT. NO. OLSP2	Sheet 1 of 1	

Quality Products From The Specialists in Electro-Magnetic Compatibility