

4

3

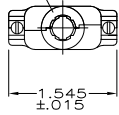
2

1

THIS DRAWING IS UNPUBLISHED. RELEASED FOR PUBLICATION
 © COPYRIGHT - By - ALL RIGHTS RESERVED.

LOC	DIST	REVISIONS					
GP	00	P	LTR	DESCRIPTION	DATE	BY	APPD
		P		REVISED PER ECO-11-005033	23MAR11	RK	HMR

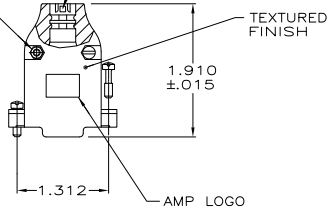
OPENING FOR CABLE
(SEE TABLE FOR DIA)



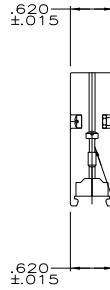
- PARTS PACKAGED UNASSEMBLED.
- ZINC PLATED .000200-.000400 THICK, CLEAR CHROMATE COATING.

SIZE IDENTIFICATION LETTER
MOLDED IN APPROXIMATE AREA
SHOWN, SEE TABLE

#4-40 FILLISTER HEAD
STEEL SCREW & HEX NUT
ZINC PLATED
(2 EACH REQ'D)



CABLE CLAMP (QTY:2)
MAT'L:ZINC ALLOY, PLATED NICKEL
OVER COPPER



#4-40 FILLISTER HD SCREW
MAT'L: STEEL,
QTY:2

K	.430	1-5745172-3
B	.225	5745172-3
E	.300	5745172-2
H	.375	5745172-1
NECK IDENT	CABLE DIA	PART NO

DIMENSIONS:		OTHER DIMENSIONS:		MATERIAL:		FINISH:	
INCHES	0	PLC	±	SEE CALLOUTS	SEE CALLOUTS	SEE CALLOUTS	SEE CALLOUTS
	1	PLC	±				
	2	PLC	±				
	3	PLC	±				
	4	PLC	±				
		ANGLES	±				

THIS DRAWING IS A CONTROLLED DOCUMENT.	DR. S. MCMASTER 02AU005	TE Connectivity
CHK. J. GERACE 02AU005	APPD. M. WALMSLEY 02AU005	
NAME	PRODUCT SPEC	RESTRICTED TO
APPLICATION SPEC	SIZE	CAGE CODE
WEIGHT	A2	00779
CUSTOMER DRAWING	C=5745172	
	SCALE	1:1
	SHEET	1 of 1
	REV	P